

CONSUMER PRICE INDEX

January 2009

1 Consumer Price Index (CPI), All Items, 2002 = 100

Month	CPI	Annual Rate of Inflation
Whitehorse		
Jan '09	113.0	2.4% (Jan '08 to Jan '09)
Dec '08	113.9	3.0% (Dec '07 to Dec '08)
Jan '08	110.4	3.2% (Jan '07 to Jan '08)
Canada		
Jan '09	113.0	1.1% (Jan '08 to Jan '09)
Dec '08	113.3	1.2% (Dec '07 to Dec '08)
Jan '08	111.8	2.2% (Jan '07 to Jan '08)

Comparing the month of January 2009 with January 2008, the **annual** rate of inflation in Whitehorse (2.4%) was 1.3 percentage points higher than the **annual** rate of inflation in Canada (1.1%). This is the nineteenth consecutive month that Whitehorse has been higher than the national rate.

On a **monthly** basis, in Whitehorse (figures for the Yukon are not available) overall prices **decreased 0.8%** from December 2008 to January 2009.

Major **monthly decreases** were seen in the following CPI commodities:

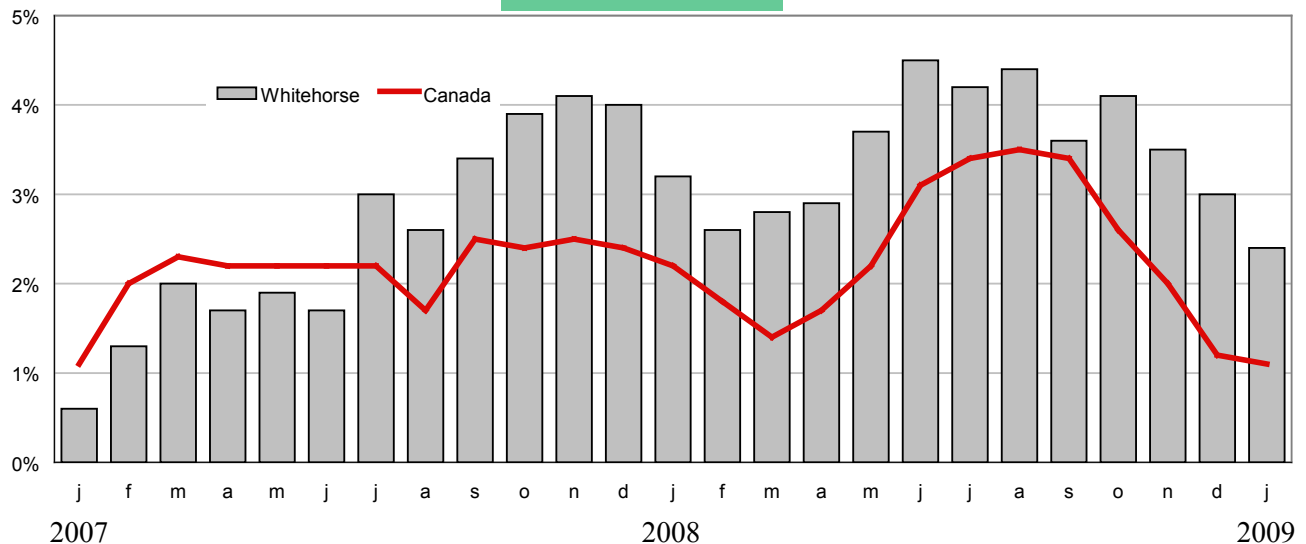
- purchase and leasing of passenger vehicles
- inter-city transportation
- gasoline

Some of the major **increases** partially offsetting **monthly** decreases were:

- footwear
- fresh vegetables
- mortgage interest cost

Annual increases for Whitehorse in January were again in mortgage interest cost, rent, and cigarettes. Offsetting some of these **annual** increases were decreases in gasoline, purchase and leasing of passenger vehicles, and fuel oil and other fuels.

Inflation Rate



Each bar represents a month of the year, with the first letter of the month's name listed below the bar.

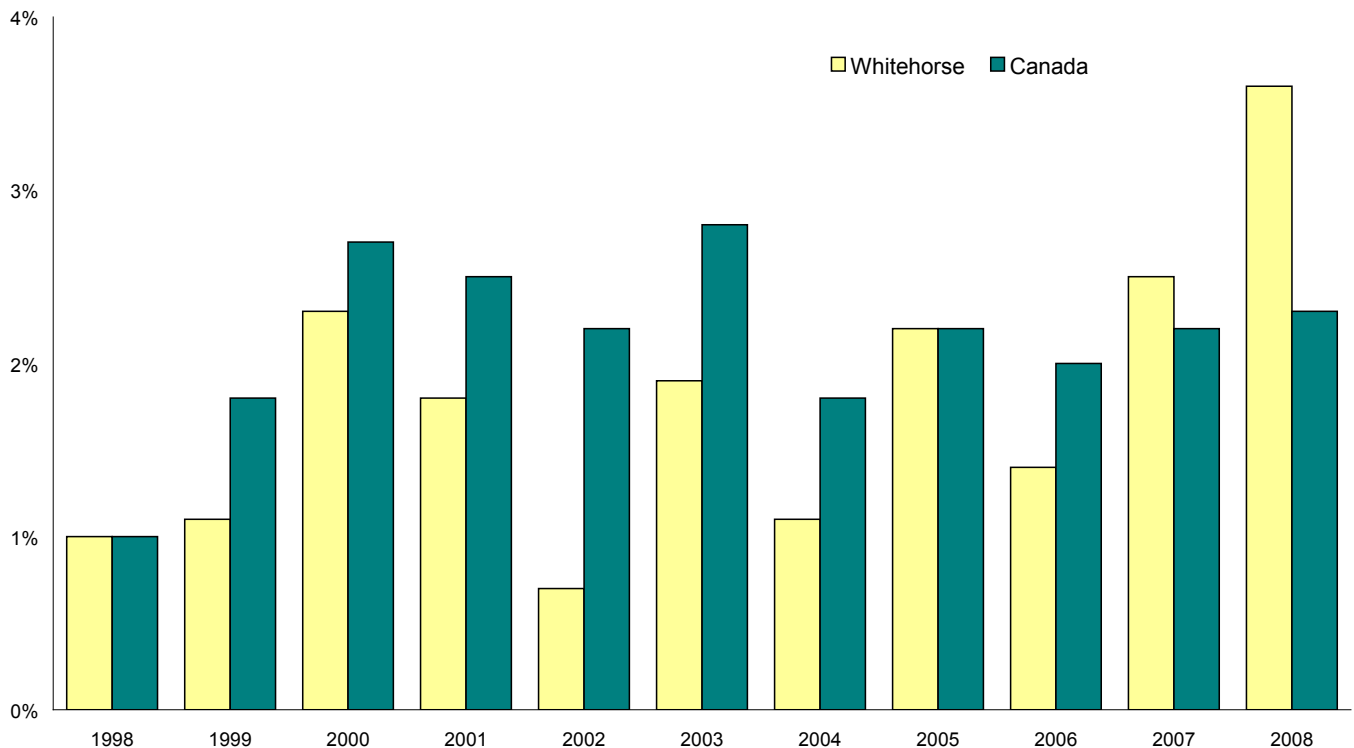
2 Consumer Price Index History - Annual Averages

Whitehorse (2002 = 100)

Canada (2002 = 100)

Year	All-Items Index	% Change From Previous Year	Year	All-Items Index	% Change From Previous Year
2008	113.4	3.6	2008	114.1	2.3
2007	109.5	2.5	2007	111.5	2.2
2006	106.8	1.4	2006	109.1	2.0
2005	105.3	2.2	2005	107.0	2.2
2004	103.0	1.1	2004	104.7	1.8
2003	101.9	1.9	2003	102.8	2.8
2002	100.0	0.7	2002	100.0	2.2
2001	99.3	1.8	2001	97.8	2.5
2000	97.5	2.3	2000	95.4	2.7
1999	95.3	1.1	1999	92.9	1.8
1998	94.3	1.0	1998	91.3	1.0

3 The Annual Average Rate of Inflation in Whitehorse vs. Canada



4 Consumer Price Index — (All Items, 2002 = 100)

Index for Whitehorse 2007/'08				Index for Canada 2007/'08			
Month	2007	2008	% Change	Month	2007	2008	% Change
Jan	107.0	110.4	3.2	Jan	109.4	111.8	2.2
Feb	107.3	110.1	2.6	Feb	110.2	112.2	1.8
Mar	108.0	111.0	2.8	Mar	111.1	112.6	1.4
Apr	108.7	111.8	2.9	Apr	111.6	113.5	1.7
May	109.5	113.6	3.7	May	112.1	114.6	2.2
Jun	109.7	114.6	4.5	Jun	111.9	115.4	3.1
Jul	110.7	115.3	4.2	Jul	112.0	115.8	3.4
Aug	110.5	115.4	4.4	Aug	111.7	115.6	3.5
Sep	110.8	114.8	3.6	Sep	111.9	115.7	3.4
Oct	110.4	114.9	4.1	Oct	111.6	114.5	2.6
Nov	110.7	114.6	3.5	Nov	111.9	114.1	2.0
Dec	110.6	113.9	3.0	Dec	112.0	113.3	1.2
Year Average	109.5	113.4	3.6	Year Average	111.5	114.1	2.3

Index for Whitehorse 2008/'09				Index for Canada 2008/'09			
Month	2008	2009	% Change	Month	2008	2009	% Change
Jan	110.4	113.0	2.4	Jan	111.8	113.0	1.1
Feb	110.1			Feb	112.2		
Mar	111.0			Mar	112.6		
Apr	111.8			Apr	113.5		
May	113.6			May	114.6		
Jun	114.6			Jun	115.4		
Jul	115.3			Jul	115.8		
Aug	115.4			Aug	115.6		
Sep	114.8			Sep	115.7		
Oct	114.9			Oct	114.5		
Nov	114.6			Nov	114.1		
Dec	113.9			Dec	113.3		
Year Average	113.4	-	-	Year Average	114.1	-	-

5 Consumer Price Index for Whitehorse — January 2009

	Index		% Change		
	January 2009	December 2008	January 2008	Dec. '08 to Jan. '09	Jan. '08 to Jan. '09
All-Items	113.0	113.9	110.4	-0.8	2.4
Food	115.0	115.1	108.5	-0.1	6.0
Shelter	131.1	131.5	124.4	-0.3	5.4
Household Operations & Furnishings	103.2	102.9	99.8	0.3	3.4
Clothing & Footwear	101.5	98.9	98.6	2.6	2.9
Transportation	110.1	114.2	116.4	-3.6	-5.4
Health & Personal Care	109.4	108.8	107.2	0.6	2.1
Recreation, Education & Reading	91.5	92.8	93.0	-1.4	-1.6
Alcoholic Beverages & Tobacco Products	132.8	132.9	117.7	-0.1	12.8
Special Aggregates					
Energy	128.6	134.0	147.1	-4.0	-12.6
All-Items excluding Energy	111.2	111.7	106.7	-0.4	4.2

The Consumer Price Index (CPI) is produced on a monthly basis by Statistics Canada. The data used to determine the CPI are collected by survey and the results are released in Statistics Canada publication The Consumer Price Index, catalogue no. 62-001. The Index is used to determine price change (inflation) in a given city or province over time. In order to calculate the inflation rate in an area, an index for two time periods is required. The percentage change in this index from one point in time to the next is known as the 'rate of inflation' (or 'rate of deflation' if there is a decrease).

The current official time base of the Consumer Price Index (CPI) is 2002 = 100.