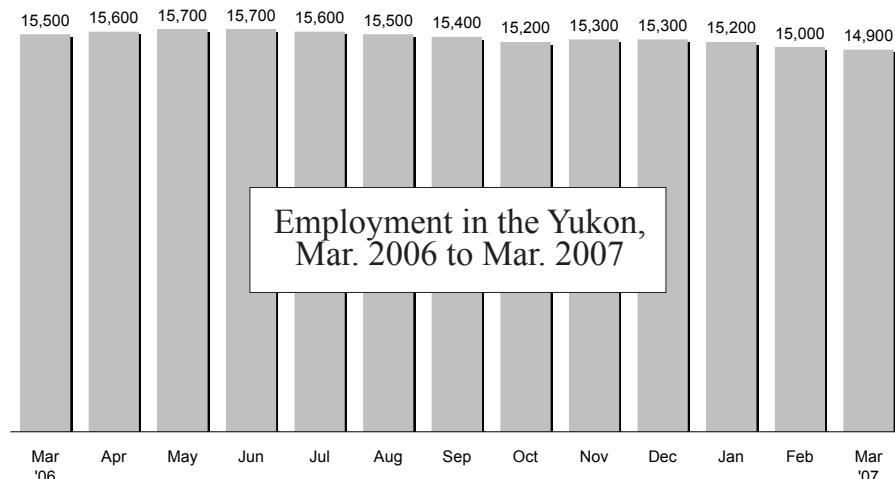


# YUKON BUREAU OF STATISTICS



## Yukon Employment March 2007



Yukon's labour force decreased by 900 from March 2006 (16,300) to March 2007 (15,400). Of the March 2007 figure, 14,900 or 96.8% were employed and 500 or 3.2% were unemployed. One year ago, in March 2006, there were 16,300 individuals in the labour force of whom 15,500 or 95.7% were employed and 700 or 4.3% were unemployed.

*As of January 2007, Statistics Canada made minor revisions to the Yukon seasonally adjusted data back to 1992.*

### March 2007 Employment at a glance:

• Labour force:	15,400
• Employment:	14,900
• Unemployment:	500
• Unemployment rate:	3.2%
-Last month	3.2%
-One year ago	4.3%

### What's inside:

#### Seasonally Adjusted Figures

Employment.....	1
Canada/provinces.....	1
Unemployment rate .....	2
Canada/provinces.....	3
15+ Labour Force .....	3
25+ Labour Force .....	5
Unemployment rate .....	6

#### Seasonally Unadjusted Figures

Labour Force Characteristics .....	7
Full-/Part-time employment .....	8
Goods-/Service-producing sectors ..	9
Public/Private sector employment ..	9
By sex & age:.....	9
Labour force.....	9
Employed.....	10
Participation rate.....	10
Employment rate.....	10
Where the numbers come from....	11

#### Definitions.....

12

**PLEASE NOTE:** Due to rounding, the sum of individual Labour Force Survey characteristics at times does not equal the labour force and/or total employment figures. Percentages have been adjusted on the basis of the reported unemployment rate. All figures quoted for the Yukon are three-month moving averages. For a definition of three-month moving average, please go to the list of definitions on page 12.

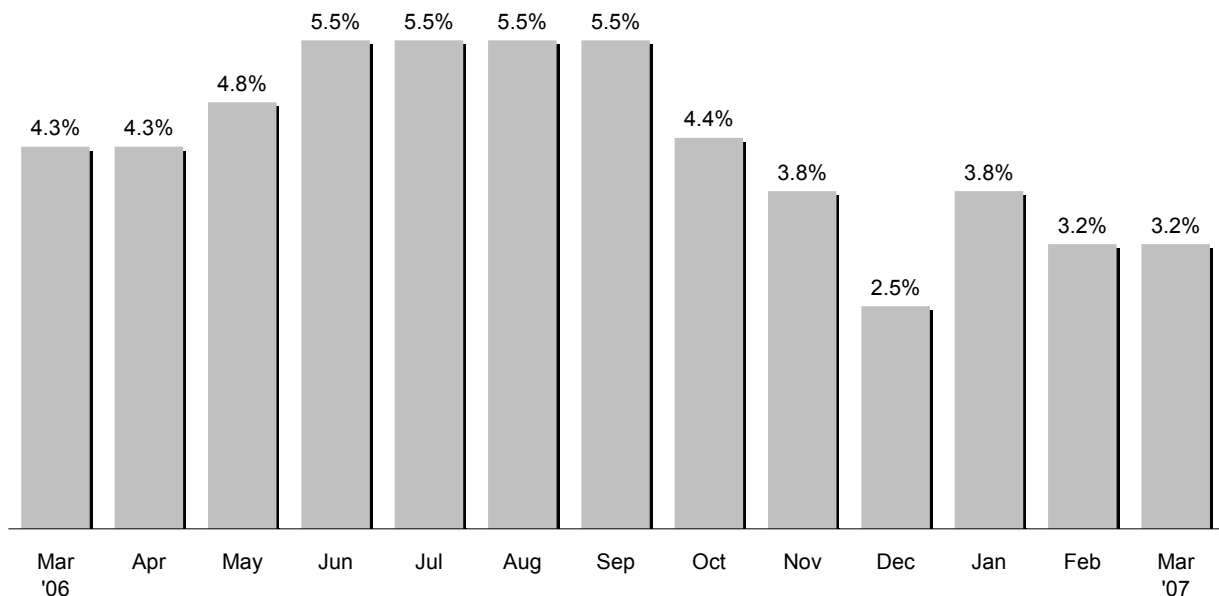
### Figures From Across Canada—March 2007

	Number Employed	Number Unemployed	Unemployment Rate
<b>Yukon</b>	<b>14,900</b>	<b>500</b>	<b>3.2%</b>
Canada	16,798,400	1,094,400	6.1%
Newfoundland & Labrador	217,700	36,300	14.3%
P.E.I.	70,100	8,100	10.3%
Nova Scotia	447,800	38,300	7.9%
New Brunswick	360,000	28,800	7.4%
Quebec	3,828,200	315,500	7.6%
Ontario	6,572,500	457,700	6.5%
Manitoba	593,600	26,500	4.3%
Saskatchewan	504,400	19,900	3.8%
Alberta	1,938,600	71,500	3.6%
B.C.	2,265,400	91,900	3.9%

This table shows that Yukon ranks first in the country in terms of the unemployment rate (3.2%). Alberta's unemployment rate (3.6%) was second, while Newfoundland's rate (14.3%) ranked eleventh.

**Note:** the NWT's figure of 4.1% and Nunavut's (10 largest communities) figure of 8.3% are available only as "unadjusted" estimates and therefore are not included in this table of seasonally adjusted data. They also, along with Yukon figures, are three-month moving averages, and therefore not included in the overall figure for Canada.

## Yukon's Unemployment Rate



The unemployment rate has remained relatively stable and low over the past year. The following changes have occurred on a month to month basis:

	Percentage points*
2006	
• February to March	-0.1
• March to April	0.0
• April to May	0.5
• May to June	0.7
• June to July	0.0
• July to August	0.0
• August to September	0.0
• September to October	-1.1
• October to November	-0.6
• November to December	-1.3
2007	
• Dec. '06 to January '07	1.3
• January to February	-0.6
• February to March	0.0

\* percentage point is the actual numerical difference between two percentages, such as: 10% - 8% = 2 percentage points.

### What is the unemployment rate, and how is it calculated?

The unemployment rate shows the relationship between the number of unemployed and the labour force. The labour force includes those individuals 15 years of age and older who are either employed or unemployed but looking for work. The higher the value of the unemployment rate, the greater the number of individuals unemployed as compared to the labour force.

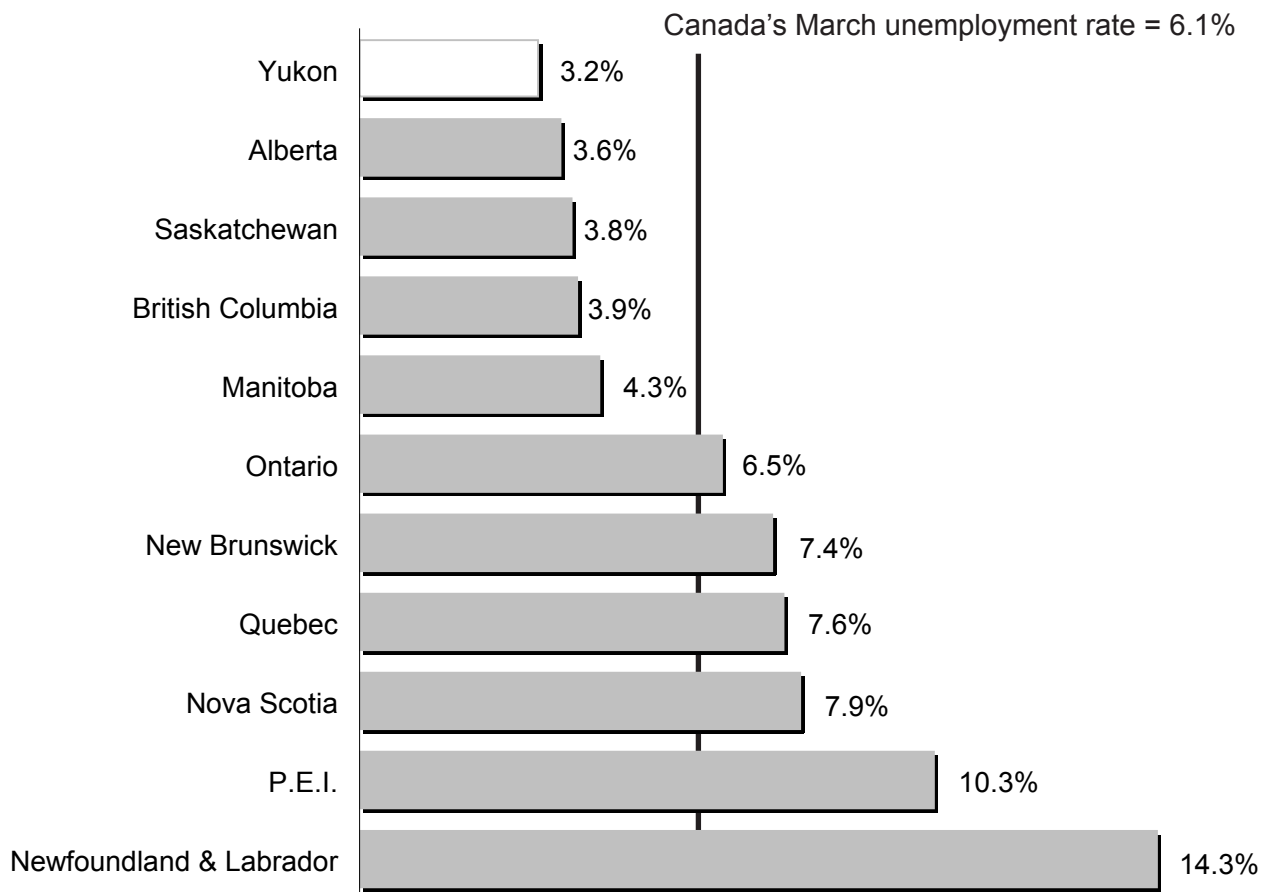
The survey that estimates the Yukon's unemployment rate, the Labour Force Survey, or LFS, has been in operation in the Yukon since January 1992.

Over the last 16 years the average unemployment rate for March has been 9.5%.

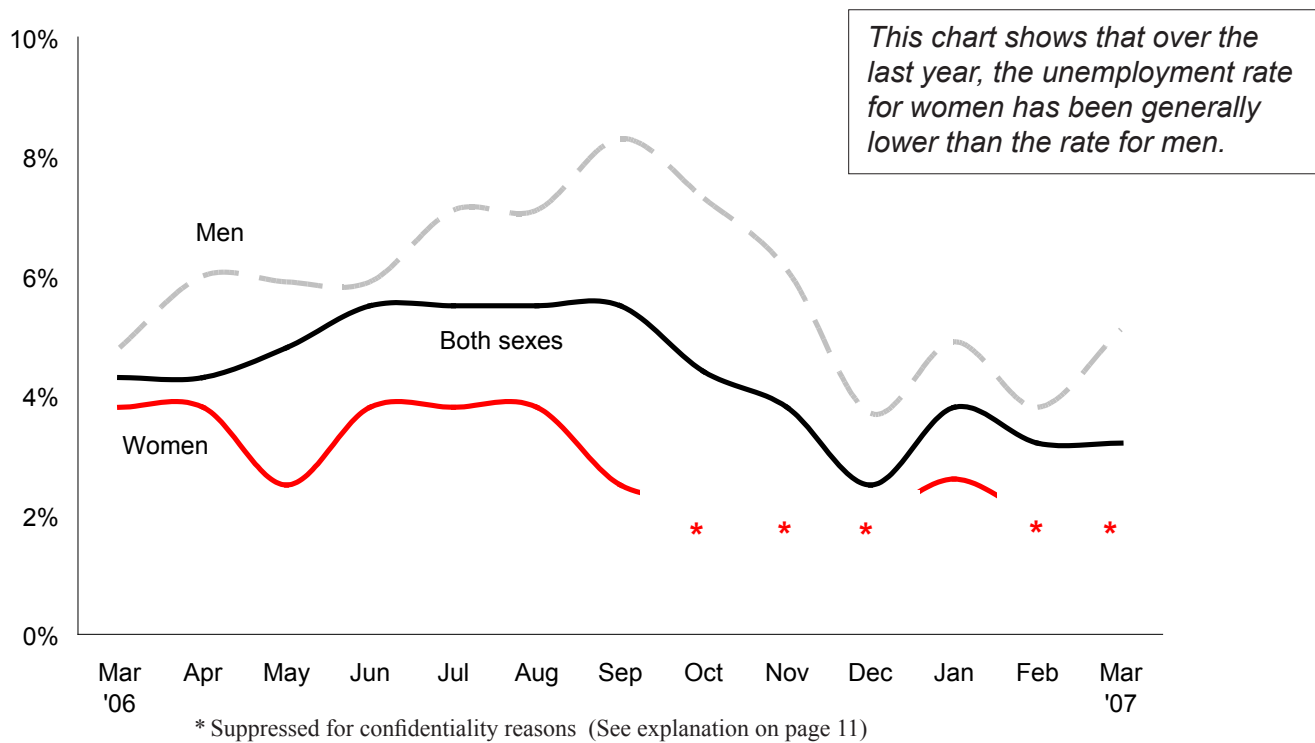
Looking at the change in the unemployment rate between February and March in previous years, since 1993 the rate has fallen 7 times, risen 5 times, and stayed the same three times.

	February	March	Change
2007	3.2%	3.2%	0.0%
2006	4.4%	4.3%	-0.1%
2005	5.3%	4.2%	-1.1%
2004	6.4%	6.4%	0.0%
2003	10.5%	9.3%	-1.2%
2002	9.2%	9.9%	0.7%
2001	11.1%	10.6%	-0.5%
2000	11.0%	10.2%	-0.8%
1999	13.9%	14.6%	0.7%
1998	11.5%	14.0%	2.5%
1997	14.1%	14.1%	0.0%
1996	8.6%	9.2%	0.6%
1995	7.8%	7.7%	-0.1%
1994	12.6%	11.7%	-0.9%
1993	12.2%	13.9%	1.7%
1992	..	9.0%	..
<b>Average 1993 to 2007</b>	<b>9.5%</b>	<b>9.5%</b>	<b>0.0%</b>

## Unemployment rates: Canada, Provinces and Yukon — March 2007



## Monthly Unemployment Rates for the Yukon Labour Force Aged 15 and Over



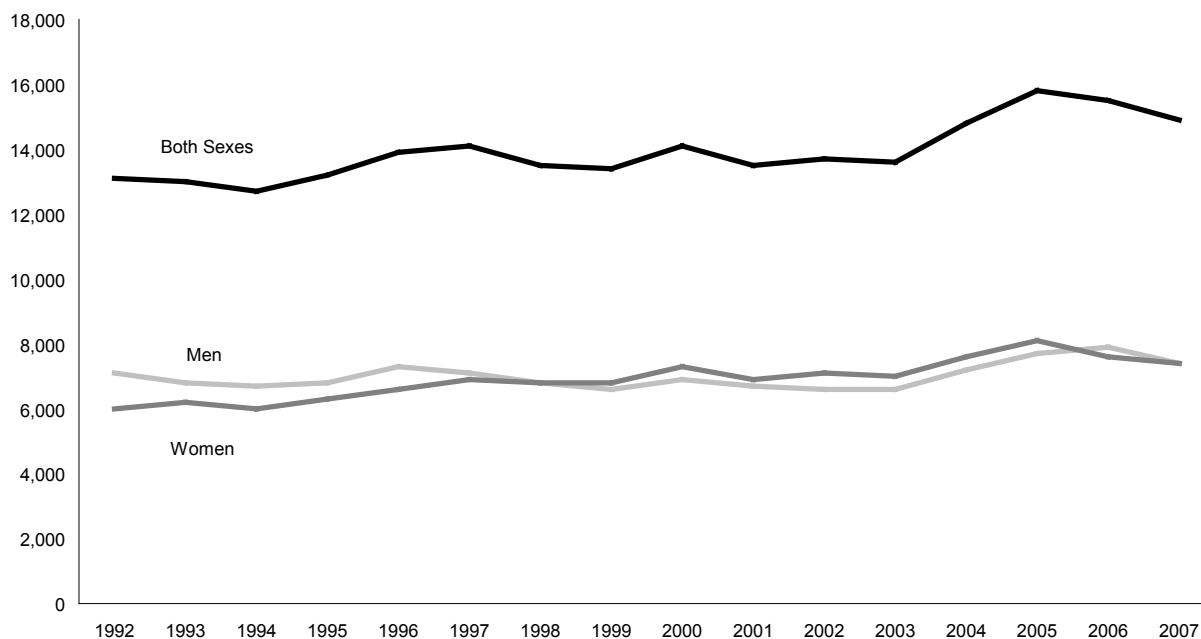
## Yukon's Labour Force Aged 15 and Over Continued . . .

		Labour Force			Employment			Unemployment		
		Both Sexes	Men	Women	Both Sexes	Men	Women	Both Sexes	Men	Women
2007	Mar	15,400	7,900	7,500	14,900	7,400	7,400	500	400	*
	Feb	15,500	7,800	7,600	15,000	7,500	7,500	500	300	*
	Jan	15,800	8,100	7,700	15,200	7,700	7,500	600	400	200
2006	Dec	15,700	8,100	7,600	15,300	7,800	7,500	400	300	*
	Nov	15,900	8,200	7,700	15,300	7,700	7,600	600	500	*
	Oct	15,900	8,200	7,700	15,200	7,600	7,600	700	600	*
	Sep	16,300	8,400	7,900	15,400	7,600	7,700	900	700	200
	Aug	16,300	8,400	7,900	15,500	7,800	7,700	900	600	300
	Jul	16,500	8,500	8,000	15,600	7,900	7,700	900	600	300
	Jun	16,500	8,500	8,000	15,700	8,000	7,700	900	500	300
	May	16,500	8,500	8,000	15,700	7,900	7,800	800	500	200
	Apr	16,400	8,400	8,000	15,600	8,000	7,700	700	500	300
	Mar	16,300	8,400	7,900	15,500	7,900	7,600	700	400	300
2005	Mar (r)	16,500	8,300	8,200	15,800	7,700	8,100	700	600	*
2004	Mar (r)	15,700	7,800	7,900	14,800	7,200	7,600	1,000	700	300
2003	Mar (r)	15,100	7,500	7,600	13,600	6,600	7,000	1,400	900	600
2002	Mar (r)	15,100	7,600	7,500	13,700	6,600	7,100	1,500	1,000	400
2001	Mar (r)	15,100	7,600	7,500	13,500	6,700	6,900	1,600	1,000	700
2000	Mar (r)	15,700	8,000	7,800	14,100	6,900	7,300	1,600	1,100	500
1999	Mar (r)	15,700	8,200	7,500	13,400	6,600	6,800	2,300	1,500	700
1998	Mar (r)	15,700	8,200	7,500	13,500	6,800	6,800	2,200	1,400	700
1997	Mar (r)	16,300	8,500	7,800	14,100	7,100	6,900	2,300	1,400	900
1996	Mar (r)	15,300	8,200	7,100	13,900	7,300	6,600	1,400	900	500
1995	Mar (r)	14,300	7,600	6,700	13,200	6,800	6,300	1,100	700	400
1994	Mar (r)	14,500	7,800	6,700	12,700	6,700	6,000	1,700	1,100	600
1993	Mar (r)	15,100	8,100	6,900	13,000	6,800	6,200	2,100	1,300	800
1992	Mar (r)	14,400	7,800	6,600	13,100	7,100	6,000	1,300	700	600
<b>Average Mar 1992 to 2007</b>		<b>15,400</b>	<b>8,000</b>	<b>7,400</b>	<b>13,900</b>	<b>7,000</b>	<b>6,900</b>	<b>1,500</b>	<b>900</b>	<b>600</b>

(r) revised

\* Suppressed for confidentiality reasons (See explanation on page 11)

### Number of Employed for March, 15 and over, 1992 to 2007



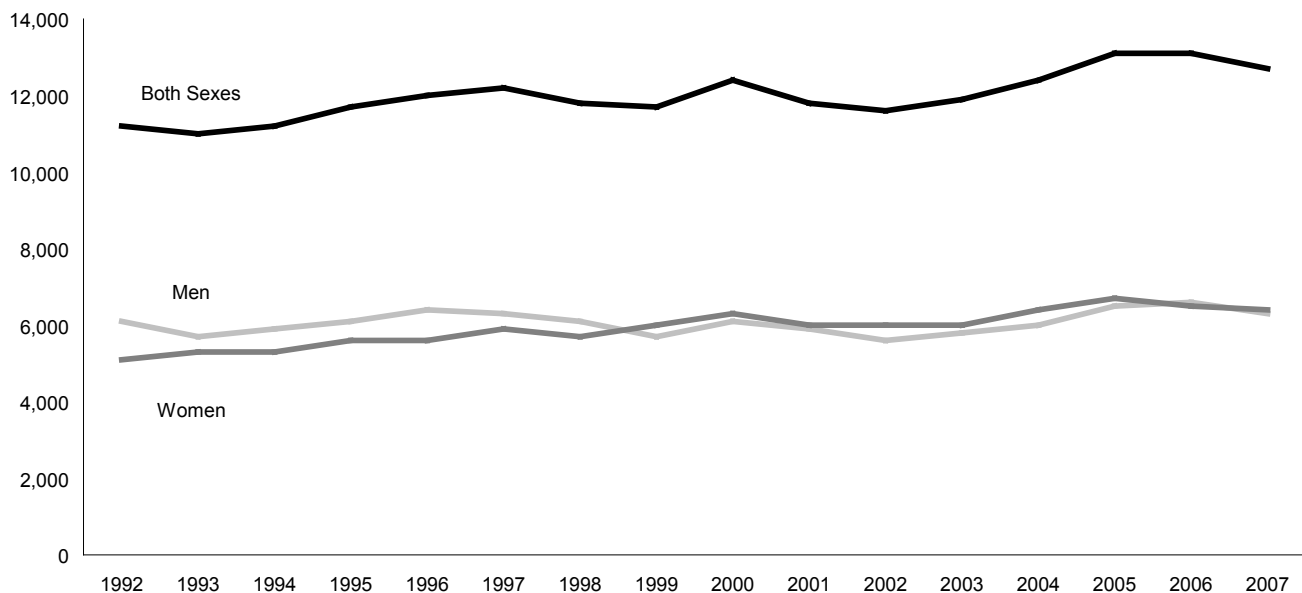
## Yukon's Labour Force, Aged 25 and Over

		Labour Force			Employment			Unemployment		
		Both Sexes	Men	Women	Both Sexes	Men	Women	Both Sexes	Men	Women
2007	Mar	12,900	6,400	6,500	12,700	6,300	6,400	200	*	*
	Feb	13,100	6,400	6,700	12,900	6,300	6,600	200	*	*
	Jan	13,300	6,700	6,600	13,000	6,500	6,500	300	200	200
2006	Dec	13,200	6,600	6,600	13,000	6,500	6,500	300	200	*
	Nov	13,400	6,700	6,700	13,100	6,400	6,600	400	300	*
	Oct	13,400	6,800	6,700	13,000	6,400	6,600	400	300	*
	Sep	13,600	6,800	6,800	13,100	6,400	6,700	500	400	*
	Aug	13,500	6,800	6,700	13,000	6,500	6,500	500	400	200
	Jul	13,500	6,800	6,600	13,000	6,500	6,400	500	300	200
	Jun	13,600	6,900	6,700	13,200	6,600	6,500	500	200	200
	May	13,600	6,900	6,800	13,200	6,600	6,600	400	200	200
	Apr	13,700	6,900	6,900	13,300	6,700	6,600	400	200	200
	Mar	13,600	6,800	6,800	13,100	6,600	6,500	400	200	300
2005	Mar (r)	13,500	6,700	6,800	13,100	6,500	6,700	400	300	*
2004	Mar (r)	13,100	6,500	6,700	12,400	6,000	6,400	800	500	300
2003	Mar (r)	12,900	6,500	6,400	11,900	5,800	6,000	1,000	700	400
2002	Mar (r)	12,600	6,400	6,200	11,600	5,600	6,000	1,100	800	300
2001	Mar (r)	13,100	6,600	6,500	11,800	5,900	6,000	1,300	700	500
2000	Mar (r)	13,600	6,900	6,700	12,400	6,100	6,300	1,200	900	300
1999	Mar (r)	13,300	6,900	6,400	11,700	5,700	6,000	1,700	1,200	400
1998	Mar (r)	13,400	7,100	6,300	11,800	6,100	5,700	1,600	1,000	600
1997	Mar (r)	13,800	7,300	6,500	12,200	6,300	5,900	1,600	1,000	600
1996	Mar (r)	12,900	6,900	6,000	12,000	6,400	5,600	900	600	400
1995	Mar (r)	12,400	6,600	5,800	11,700	6,100	5,600	700	500	300
1994	Mar (r)	12,400	6,700	5,700	11,200	5,900	5,300	1,200	700	500
1993	Mar (r)	12,600	6,800	5,900	11,000	5,700	5,300	1,700	1,100	600
1992	Mar (r)	12,100	6,500	5,600	11,200	6,100	5,100	900	400	500
<b>Average Mar 1992 to 2007</b>		<b>13,000</b>	<b>6,700</b>	<b>6,300</b>	<b>12,000</b>	<b>6,100</b>	<b>5,900</b>	<b>1,000</b>	<b>700</b>	<b>400</b>

(r) revised

\* Suppressed for confidentiality reasons (See explanation on page 11)

### Number of Employed for March, 25 and over, 1992 to 2007



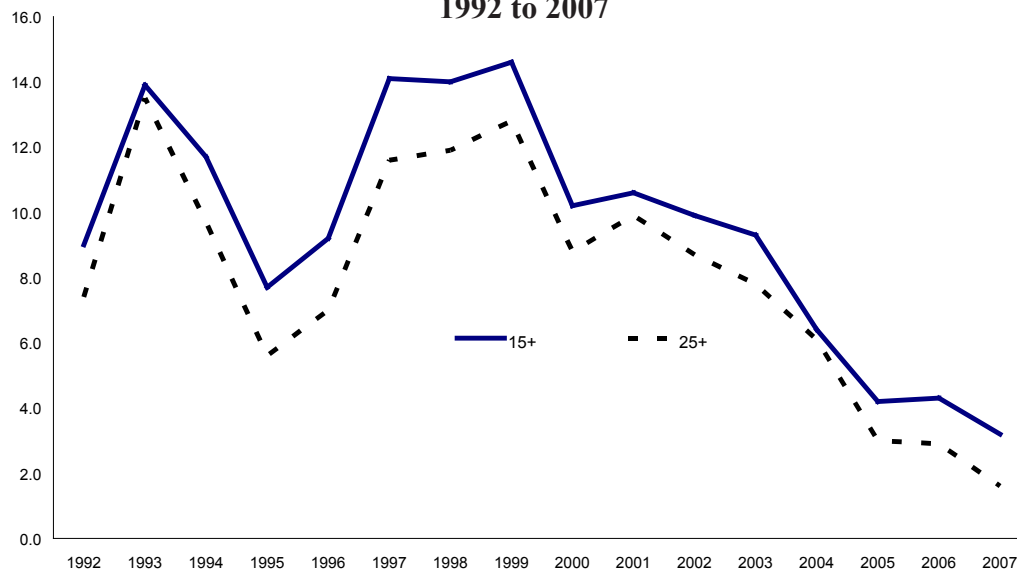
## Yukon's Unemployment Rate

		15 years and older Unemployment Rate (%)			25 years and older Unemployment Rate (%)		
		Both Sexes	Men	Women	Both Sexes	Men	Women
2007	Mar	3.2	5.1	*	1.6	*	*
	Feb	3.2	3.8	*	1.5	*	*
	Jan	3.8	4.9	2.6	2.3	3.0	3.0
2006	Dec	2.5	3.7	*	2.3	3.0	*
	Nov	3.8	6.1	*	3.0	4.5	*
	Oct	4.4	7.3	*	3.0	4.4	*
	Sep	5.5	8.3	2.5	3.7	5.9	*
	Aug	5.5	7.1	3.8	3.7	5.9	3.0
	Jul	5.5	7.1	3.8	3.7	4.4	3.0
	Jun	5.5	5.9	3.8	3.7	2.9	3.0
	May	4.8	5.9	2.5	2.9	2.9	2.9
	Apr	4.3	6.0	3.8	2.9	2.9	2.9
	Mar	4.3	4.8	3.8	2.9	2.9	4.4
	2005	Mar (r)	4.2	7.2	*	3.0	4.5
2004	Mar (r)	6.4	9.0	3.8	6.1	7.7	4.5
2003	Mar (r)	9.3	12.0	7.9	7.8	10.8	6.3
2002	Mar (r)	9.9	13.2	5.3	8.7	12.5	4.8
2001	Mar (r)	10.6	13.2	9.3	9.9	10.6	7.7
2000	Mar (r)	10.2	13.8	6.4	8.8	13.0	4.5
1999	Mar (r)	14.6	18.3	9.3	12.8	17.4	6.3
1998	Mar (r)	14.0	17.1	9.3	11.9	14.1	9.5
1997	Mar (r)	14.1	16.5	11.5	11.6	13.7	9.2
1996	Mar (r)	9.2	11.0	7.0	7.0	8.7	6.7
1995	Mar (r)	7.7	9.2	6.0	5.6	7.6	5.2
1994	Mar (r)	11.7	14.1	9.0	9.7	10.4	8.8
1993	Mar (r)	13.9	16.0	11.6	13.5	16.2	10.2
1992	Mar (r)	9.0	9.0	9.1	7.4	6.2	8.9
<b>Average Mar 1992 to 2007</b>		<b>9.5</b>	<b>11.8</b>	<b>7.8</b>	<b>8.0</b>	<b>10.4</b>	<b>6.9</b>

(r) revised

\* Suppressed for confidentiality reasons (See explanation on page 11)

**Yukon's March Unemployment Rate  
1992 to 2007**



## Yukon's Employment - *seasonally unadjusted figures*

### A word about “adjusted” vs. “unadjusted”

The statistics on the next 5 pages are “seasonally unadjusted,” as opposed to the figures on pages 1 through 6, which are “seasonally adjusted.”

“Seasonally adjusted” refers to the technique of adjusting the “raw” figures to remove seasonal movements (*see page 12 for further explanation*). As such, “seasonally adjusted” employment figures are widely used and quoted, as they are considered to be a more accurate picture of the current employment situation than the “raw” or “unadjusted” figures.

Some of the variables mentioned in the next 5 pages are available only in the “unadjusted” format, while others are available both as “adjusted” and “unadjusted.” Comparisons between the “adjusted” and “unadjusted” series should not be made.

### Yukon's Labour Force Characteristics (*unadjusted*)

		Labour Force		Unemployed	Not in Labour Force	Unemployment Rate	Participation Rate	Employment Rate
		Employed	Employed			Rate	Rate	Rate
						----- % -----		
2007	Mar	15,100	14,400	700	6,300	4.6	70.6	67.3
	Feb	15,100	14,600	500	6,300	3.3	70.6	68.2
	Jan	15,400	14,700	700	6,000	4.5	71.6	68.4
2006	Dec	15,400	15,000	400	6,100	2.6	71.6	69.8
	Nov	15,700	15,100	600	5,900	3.8	73.0	70.2
	Oct	16,000	15,400	600	5,500	3.8	74.4	71.6
	Sep	16,900	16,100	800	4,700	4.7	78.6	74.9
	Aug	17,200	16,400	800	4,300	4.7	80.0	76.3
	Jul	17,200	16,300	900	4,300	5.2	80.0	75.8
	Jun	16,700	15,800	900	4,900	5.4	77.7	73.5
	May	16,400	15,600	800	5,100	4.9	76.3	72.6
	Apr	16,100	15,200	800	5,500	5.0	74.5	70.4
	Mar	15,900	15,000	900	5,700	5.7	73.6	69.4
2005	Mar	16,100	15,300	900	5,400	5.6	74.5	70.8
2004	Mar	15,400	14,300	1,100	5,700	7.1	73.0	67.8
2003	Mar	14,700	13,100	1,600	5,700	10.9	71.7	63.9
2002	Mar	14,800	13,100	1,700	5,200	11.5	74.0	65.5
2001	Mar	14,800	13,000	1,800	5,000	12.2	74.7	65.7
2000	Mar	15,300	13,500	1,800	4,600	11.8	76.9	67.8
1999	Mar	15,300	12,800	2,500	4,600	16.3	76.9	64.3
1998	Mar	15,200	12,800	2,400	4,900	15.8	75.6	63.7
1997	Mar	15,800	13,300	2,500	4,400	15.8	78.6	66.2
1996	Mar	14,700	13,100	1,600	4,700	10.9	75.8	67.5
1995	Mar	13,800	12,400	1,300	4,900	9.4	73.8	66.3
1994	Mar	14,000	12,000	1,900	4,500	13.6	76.1	65.2
1993	Mar	14,500	12,200	2,300	4,300	15.9	77.5	65.2
1992	Mar	13,800	12,300	1,500	4,500	10.9	75.4	67.2
<b>Average Mar 1992 to 2007</b>		<b>15,000</b>	<b>13,300</b>	<b>1,700</b>	<b>5,000</b>	<b>11.1</b>	<b>74.9</b>	<b>66.5</b>

*Note: Due to rounding, the sum of individual LFS characteristics at times does not equal the labour force and/or total employment figures. Percentages have been adjusted on the basis of the reported unemployment rate. All figures quoted for the Yukon are three-month moving averages. For a definition of three-month moving average, please go to the list of definitions on page 12.*

### Full-time and Part-time Employment

		Total Employed	Full-time	% of all employed	Part-time	% of all employed
2007	Mar	14,400	12,300	85.4%	2,200	15.3%
	Feb	14,600	12,500	85.6%	2,000	13.7%
	Jan	14,700	12,600	85.7%	2,200	15.0%
2006	Dec	15,000	12,800	85.3%	2,200	14.7%
	Nov	15,100	12,700	84.1%	2,400	15.9%
	Oct	15,400	13,100	85.1%	2,300	14.9%
	Sep	16,100	14,100	87.6%	2,000	12.4%
	Aug	16,400	14,700	89.6%	1,800	11.0%
	Jul	16,300	14,500	89.0%	1,900	11.7%
	Jun	15,800	13,600	86.1%	2,200	13.9%
	May	15,600	13,100	84.0%	2,500	16.0%
	Apr	15,200	12,600	82.9%	2,600	17.1%
	Mar	15,000	12,400	82.7%	2,600	17.3%
	2005	Mar	15,300	13,100	85.6%	2,200
2004	Mar	14,300	11,700	81.8%	2,500	17.5%
2003	Mar	13,100	11,100	84.7%	2,100	16.0%
2002	Mar	13,100	10,600	80.9%	2,600	19.8%
2001	Mar	13,000	10,400	80.0%	2,500	19.2%
2000	Mar	13,500	10,400	77.0%	3,100	23.0%
1999	Mar	12,800	10,300	80.5%	2,500	19.5%
1998	Mar	12,800	10,400	81.3%	2,400	18.8%
1997	Mar	13,300	10,700	80.5%	2,600	19.5%
1996	Mar	13,100	11,000	84.0%	2,100	16.0%
1995	Mar	12,400	10,300	83.1%	2,100	16.9%
1994	Mar	12,000	10,100	84.2%	1,900	15.8%
1993	Mar	12,200	9,900	81.1%	2,300	18.9%
1992	Mar	12,300	10,200	82.9%	2,100	17.1%
<b>Average Mar 1992 to 2007</b>		<b>13,300</b>	<b>10,900</b>	<b>82.0%</b>	<b>2,400</b>	<b>18.0%</b>

### Employment in Goods- and Service-Producing Industries

		Total Employed	Goods- Producing Industries	Service- Producing Industries			Total Employed	Goods- Producing Industries	Service- Producing Industries	
2007	Mar	14,400	1,900	12,600	2005	Mar	15,300	1,500	13,700	
	Feb	14,600	1,900	12,700		2004	Mar	14,300	1,200	13,100
	Jan	14,700	1,900	12,800		2003	Mar	13,100	1,200	12,000
2006	Dec	15,000	2,100	12,900	2002	Mar	13,100	1,400	11,700	
	Nov	15,100	2,200	12,900	2001	Mar	13,000	1,400	11,600	
	Oct	15,400	2,300	13,100	2000	Mar	13,500	1,400	12,100	
	Sep	16,100	2,100	14,000	1999	Mar	12,800	1,100	11,700	
	Aug	16,400	2,000	14,400	1998	Mar	12,800	1,500	11,400	
	Jul	16,300	2,000	14,400	1997	Mar	13,300	1,700	11,600	
	Jun	15,800	2,000	13,800	1996	Mar	13,100	2,000	11,100	
	May	15,600	2,000	13,600	1995	Mar	12,400	1,600	10,900	
	Apr	15,200	2,000	13,200	1994	Mar	12,000	1,400	10,600	
	Mar	15,000	2,100	12,900	1993	Mar	12,200	1,600	10,600	
						1992	Mar	12,300	1,900	10,400
<b>Average Mar 1992 to 2007</b>		<b>13,300</b>	<b>1,600</b>	<b>11,800</b>						

## Public and Private Sector Employment

		Total Employed	Public Sector*		Private Sector		
			Employees	Employees	Self- Employed	Total Private Sector	
2007	Mar	14,400	5,400	6,500	2,500	9,000	
	Feb	14,600	5,400	6,500	2,600	9,100	
	Jan	14,700	5,300	6,700	2,800	9,500	
2006	Dec	15,000	5,400	6,900	2,700	9,600	
	Nov	15,100	5,400	6,700	2,900	9,600	
	Oct	15,400	5,500	7,100	2,900	10,000	
	Sep	16,100	5,900	7,400	2,700	10,100	
	Aug	16,400	6,200	7,600	2,600	10,200	
	Jul	16,300	6,200	7,600	2,500	10,100	
	Jun	15,800	6,000	7,400	2,400	9,800	
	May	15,600	5,500	7,500	2,500	10,000	
	Apr	15,200	5,300	7,400	2,500	9,900	
	Mar	15,000	5,400	7,000	2,600	9,600	
	2005	Mar	15,300	5,900	6,700	2,700	9,400
	2004	Mar	14,300	5,600	6,600	2,100	8,700
2003	Mar	13,100	4,900	6,000	2,200	8,200	
2002	Mar	13,100	5,500	5,400	2,200	7,600	
2001	Mar	13,000	5,800	4,600	2,500	7,100	
2000	Mar	13,500	5,800	5,100	2,700	7,800	
1999	Mar	12,800	5,800	4,800	2,200	7,000	
1998	Mar	12,800	5,100	5,700	2,000	7,700	
1997	Mar	13,300	4,600	6,100	2,500	8,600	
1996	Mar	13,100	4,800	6,200	2,100	8,300	
1995	Mar	12,400	4,800	5,400	2,200	7,600	
1994	Mar	12,000	4,700	5,200	2,200	7,400	
1993	Mar	12,200	4,600	5,800	1,800	7,600	
1992	Mar	12,300	4,700	5,700	1,900	7,600	
<b>Average Mar 1992 to 2007</b>		<b>13,300</b>	<b>5,200</b>	<b>5,800</b>	<b>2,300</b>	<b>8,100</b>	

\* includes Federal, Territorial, Municipal, and First Nation Band Office employment

## Labour Force

		By age			By sex & age				% Change Mar 2006 to Mar 2007
		15+	15-24	25+	Men		Women		
					15+	25+	15+	25+	
2007	Mar	15,100	2,300	12,800	7,700	6,300	7,400	6,500	Both 15+ -5.0% 15-24 -8.0% 25+ -4.5%
	Feb	15,100	2,300	12,800	7,600	6,200	7,500	6,600	
	Jan	15,400	2,400	13,100	7,900	6,500	7,600	6,600	
2006	Dec	15,400	2,300	13,100	7,900	6,500	7,500	6,600	Men 15+ -4.9% 25+ -6.0% Women 15+ -5.1% 25+ -3.0%
	Nov	15,700	2,300	13,400	8,000	6,700	7,600	6,600	
	Oct	16,000	2,500	13,500	8,300	6,900	7,800	6,700	
	Sep	16,900	3,000	13,900	8,700	7,000	8,200	6,900	
	Aug	17,200	3,400	13,800	8,900	7,000	8,300	6,800	
	Jul	17,200	3,500	13,700	8,900	6,900	8,300	6,800	
	Jun	16,700	3,000	13,700	8,600	7,000	8,000	6,700	
	May	16,400	2,800	13,600	8,400	6,900	8,000	6,800	
	Apr	16,100	2,500	13,600	8,300	6,800	7,800	6,800	
	Mar	15,900	2,500	13,400	8,100	6,700	7,800	6,700	

## Employed

		By age			By sex & age				% Change Mar 2006 to Mar 2007	
					Men		Women			
		15+	15-24	25+	15+	25+	15+	25+		
<b>2007</b>	Mar	14,400	2,000	12,500	7,100	6,100	7,300	6,400	Both 15+ -4.0% 15-24 -9.1% 25+ -2.3%	
	Feb	14,600	2,000	12,600	7,200	6,100	7,400	6,500		
	Jan	14,700	2,100	12,700	7,400	6,300	7,400	6,400		
<b>2006</b>	Dec	15,000	2,200	12,800	7,600	6,300	7,400	6,500	Men 15+ -6.6% 25+ -4.7%	
	Nov	15,100	2,000	13,000	7,600	6,500	7,500	6,600		
	Oct	15,400	2,200	13,200	7,800	6,600	7,600	6,600		
	Sep	16,100	2,600	13,500	8,100	6,700	8,000	6,800		
	Aug	16,400	3,000	13,400	8,400	6,800	8,100	6,600		
	Jul	16,300	3,100	13,300	8,300	6,700	8,000	6,500		
	Jun	15,800	2,600	13,200	8,100	6,700	7,700	6,500		
	May	15,600	2,500	13,100	7,800	6,500	7,700	6,600		
	Apr	15,200	2,100	13,100	7,700	6,500	7,500	6,600		
	Mar	15,000	2,200	12,800	7,600	6,400	7,400	6,500		
										Women 15+ -1.4% 25+ -1.5%

## Participation Rate

Change (% points) Mar 2006 to Mar 2007			By age			By sex & age			
						Men		Women	
			15+	15-24	25+	15+	25+	15+	25+
			-----%-----			-----%-----			
Both 15+ -3.0 15-24 -3.4 25+ -3.0	<b>2007</b>	Mar	70.6	56.1	74.0	72.6	75.0	68.5	73.0
		Feb	70.6	56.1	74.0	71.0	73.8	69.4	74.2
		Jan	71.6	57.1	75.7	73.8	77.4	70.4	74.2
Men 15+ -3.1 25+ -4.8	<b>2006</b>	Dec	71.6	54.8	75.7	73.8	77.4	69.4	74.2
		Nov	73.0	54.8	77.5	74.8	78.8	70.4	74.2
		Oct	74.4	59.5	78.0	77.6	81.2	72.2	75.3
		Sep	78.6	71.4	80.3	81.3	82.4	75.9	77.5
		Aug	80.0	81.0	79.8	83.2	83.3	76.9	76.4
		Jul	80.0	83.3	79.2	83.2	82.1	76.9	76.4
		Jun	77.7	71.4	79.2	80.4	83.3	73.4	75.3
		May	76.3	66.7	78.6	78.5	82.1	73.4	76.4
		Apr	74.5	59.5	78.2	77.6	81.0	71.6	76.4
		Mar	73.6	59.5	77.0	75.7	79.8	71.6	74.4
		Women 15+ -3.1 25+ -1.4							

## Employment Rate

		By age			By sex & age				Change (% points) Mar 2006 to Mar 2007	
					Men		Women			
		15+	15-24	25+	15+	25+	15+	25+		
			-----%-----			-----%-----				
<b>2007</b>	Mar	67.3	48.8	72.3	67.0	72.6	67.6	71.9	Both 15+ -2.1 15-24 -3.6 25+ -1.3	
	Feb	68.2	48.8	72.8	67.3	72.6	68.5	73.0		
	Jan	68.4	50.0	73.4	69.2	75.0	68.5	71.9		
<b>2006</b>	Dec	69.8	52.4	74.0	71.0	75.0	68.5	73.0	Men 15+ -4.0 25+ -3.6	
	Nov	70.2	47.6	75.1	71.0	76.5	69.4	74.2		
	Oct	71.6	52.4	76.3	72.9	77.6	70.4	74.2		
	Sep	74.9	61.9	78.0	75.7	78.8	74.1	76.4		
	Aug	76.3	71.4	77.5	78.5	81.0	75.0	74.2		
	Jul	75.8	73.8	76.9	77.6	79.8	74.1	73.0		
	Jun	73.5	61.9	76.3	75.7	79.8	70.6	73.0		
	May	72.6	59.5	75.7	72.9	77.4	70.6	74.2		
	Apr	70.4	50.0	75.3	72.0	77.4	68.8	74.2		
	Mar	69.4	52.4	73.6	71.0	76.2	67.9	72.2		
										Women 15+ -0.3 25+ -0.3

## Where the numbers come from

Every month Statistics Canada surveyors in each province and territory of Canada interview a representative sample of individuals 15 years of age and older. The surveyors ask these individuals if they were working, or were looking and available for work, during the “reference week” (usually the 3<sup>rd</sup> week of the month). Individuals are counted as employed if:

- they worked for at least 1 hour during the reference week (“work” includes self-employment).

Individuals are counted as unemployed if:

- they were without work but had looked for work in the past 4 weeks;
- they had been laid off but were not looking for work because they expected to return to their original work;
- they were not looking for work because they had a new job starting within 4 weeks.

If someone is neither employed nor unemployed they are then defined as not in the labour force and therefore not counted in the unemployment rate. However, they are still considered to be part of the working-age population.

The survey described above is called the Labour Force Survey (LFS). The Yukon has been included in the LFS since January 1992. However, the national rates for Canada do not include any of the territories.

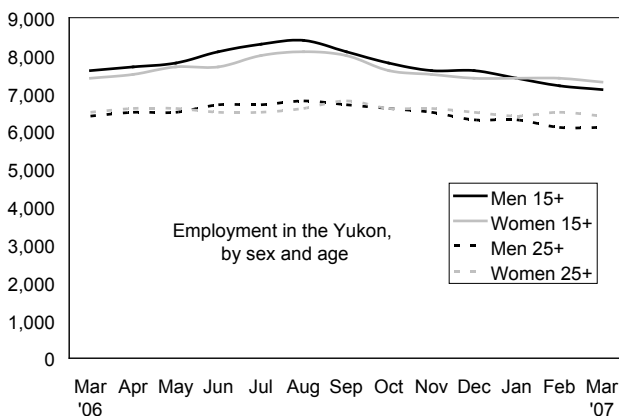
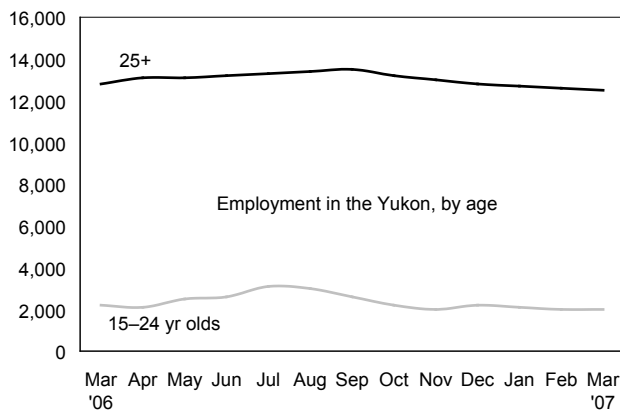
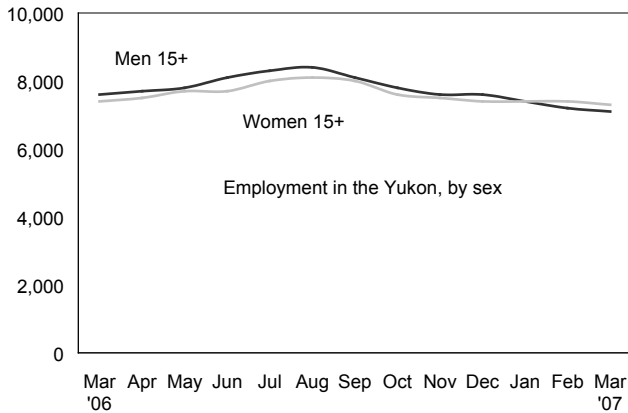
The objectives of the LFS are to divide the working-age population into three mutually exclusive classifications – employed, unemployed and not in the labour force – and to provide descriptive and explanatory data on each of these categories.

The LFS is the only source of monthly estimates of total employment including the self-employed, full- and part-time employment, and unemployment. It publishes monthly standard labour market indicators such as the unemployment rate, the employment rate and the participation rate. The LFS is a major source of information on the personal characteristics of the working-age population, including age, sex, marital status, educational attainment, and family characteristics.

In the Yukon the LFS sample is designed to represent approximately 83% of the working-age population (Yukoners 15 years of age and older). Yukoners living in unorganized areas, full-time members of the armed forces and people living in institutions are not represented in the sample.

As a “household-based” survey, the LFS counts individuals as part of the labour force in the province or territory their home is in. Therefore, if an individual is working outside of the Yukon, in the NWT for instance, but still has their home in the Yukon, they are counted in the Yukon’s labour force.

**Suppression of Data.** For the Labour Force Survey in the Yukon, Statistics Canada suppresses any figure that is below 200 for confidentiality reasons in order to ensure the confidentiality of each individual respondent to the survey. In turn, percentages (i.e. employment or unemployment rates) based on suppressed numbers will also be suppressed.



## Definitions:

### 1. Employment

Employed persons are those who, during the reference week, did any work for pay or profit, or had a job and were absent from work.

### 2. Employment rate

Also referred to as “employment/population ratio,” it is the number of employed persons expressed as a percentage of the population aged 15 years and over. The employment rate for a particular group (for example, women aged 25 years and over) is the number employed in that group expressed as a percentage of the population for that group.

### 3. Goods-Producing Industries

Goods-Producing Industries (or goods sector, or goods industries): includes agriculture, other primary industries (forestry; fishing and trapping; mines, quarries and oil wells), manufacturing, construction and utilities (electric power, gas and water).

### 4. Labour force

The labour force is the civilian non-institutional population 15 years of age and over who, during the survey reference week, were employed or unemployed.

### 5. Not in the labour force

Persons not in the labour force are those who, during the reference week, were unwilling or unable to offer or supply labour services under conditions existing in their labour markets; that is, they were neither employed nor unemployed.

### 6. Participation rate

The participation rate is the total labour force expressed as a percentage of the population aged 15 years and over. The participation rate for a particular group (for example, women aged 25 years and over) is the labour force in that group expressed as a percentage of the population for that group.

### 7. Reference Week

The reference week is the entire calendar week (from Sunday to Saturday) covered by the Labour Force Survey each month. It is usually the week containing the 15th day of the month. The interviews are conducted during the following week, called the Survey Week, and the labour force status determined is that of the reference week.

### 8. Seasonal adjustment

Fluctuations in economic time series are caused by seasonal, cyclical and irregular movements. A seasonally adjusted series is one from which seasonal movements have been eliminated. Seasonal movements are defined as those that are caused by regular annual events such as climate, holidays, vacation periods and cycles related to crops, production and retail sales associated with Christmas and Easter. It should be noted that the seasonally adjusted series contain irregular as well as longer-term cyclical fluctuations.

### 9. Self-employed

There are two broad categories of workers: those who work for others and those who work for themselves, namely, the self-employed. The self-employed includes working owners of incorporated businesses, working owners of unincorporated businesses and other self-employed.

### 10. Service-Producing Industries

Service-Producing Industries (or service sector, or service industries): includes trade; transportation and warehousing; finance, insurance, real estate and leasing; professional, scientific and technical services; management, administrative and other support; educational services; health care and social assistance; information, culture and recreation; accommodation and food services; other services; and public administration.

### 11. Three-Month Moving Average

All monthly figures for the Territories, whether seasonally adjusted or unadjusted, are three-month moving averages – for example, the March 2004 unemployment rate of 6.0% is actually an average of the unemployment rates for the months of January, February and March. April's unemployment rate will become the average of the rates for February, March and April.

### 12. Unemployment

Unemployed persons are those who, during the reference week, were available for work and were either on temporary layoff, had looked for work in the past four weeks, or had a job to start within the next four weeks.

### 13. Unemployment rate

The unemployment rate is the number of unemployed persons expressed as a percentage of the labour force. The unemployment rate for a particular group (age, sex, marital status, etc.) is the number unemployed in that group expressed as a percentage of the labour force for that group.

Information sheet no. 34.179–April '07  
Next release date: May 11<sup>th</sup>, 2007