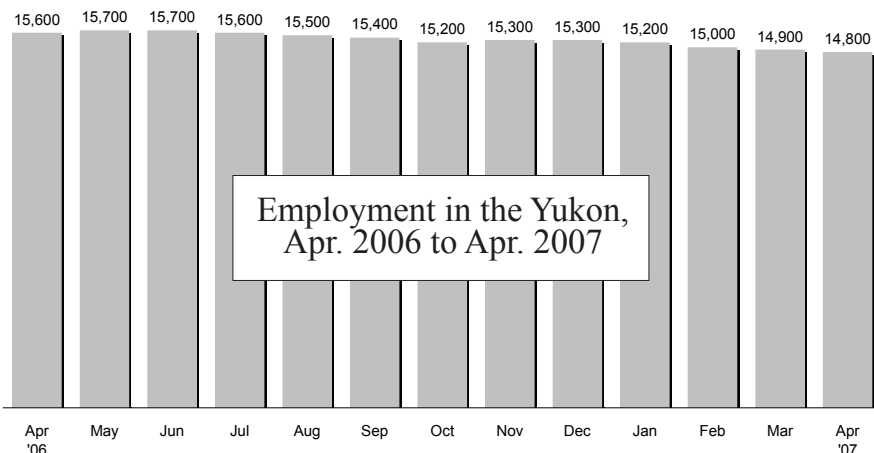


YUKON BUREAU OF STATISTICS



Yukon Employment April 2007



Yukon's labour force decreased by 1,000 from April 2006 (16,400) to April 2007 (15,400). Of the April 2007 figure, 14,800 or 96.1% were employed and 600 or 3.9% were unemployed. One year ago, in April 2006, there were 16,400 individuals in the labour force of whom 15,600 or 95.7% were employed and 700 or 4.3% were unemployed.

As of January 2007, Statistics Canada made minor revisions to the Yukon seasonally adjusted data back to 1992.

April 2007 Employment at a glance:

- Labour force: 15,400
- Employment: 14,800
- Unemployment: 600
- Unemployment rate: 3.9%
- Last month 3.2%
- One year ago 4.3%

What's inside:

Seasonally Adjusted Figures

Employment.....	1
Canada/provinces.....	1
Unemployment rate	2
Canada/provinces.....	3
15+ Labour Force	3
25+ Labour Force	5
Unemployment rate	6

Seasonally Unadjusted Figures

Labour Force Characteristics	7
Full-/Part-time employment	8
Goods-/Service-producing sectors ..	9
Public/Private sector employment ..	9
By sex & age:.....	9
Labour force.....	9
Employed.....	10
Participation rate.....	10
Employment rate.....	10
Where the numbers come from.....	11

Definitions..... 12

PLEASE NOTE: Due to rounding, the sum of individual Labour Force Survey characteristics at times does not equal the labour force and/or total employment figures. Percentages have been adjusted on the basis of the reported unemployment rate. All figures quoted for the Yukon are three-month moving averages. For a definition of three-month moving average, please go to the list of definitions on page 12.

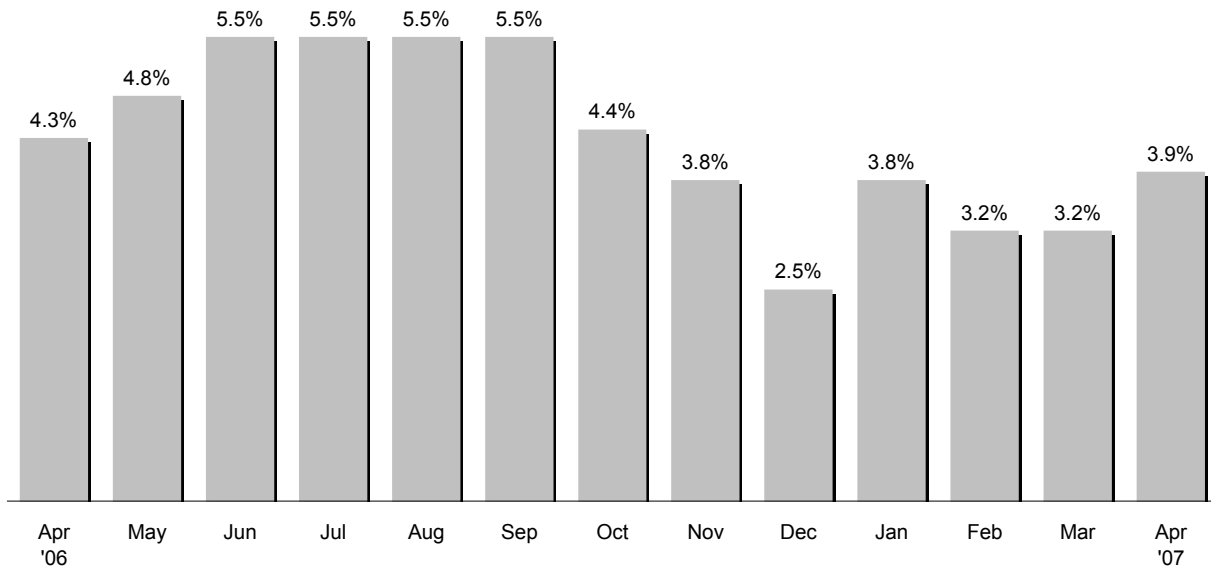
Figures From Across Canada—April 2007

	Number Employed	Number Unemployed	Unemployment Rate
Yukon	14,800	600	3.9%
Canada	16,793,200	1,097,000	6.1%
Newfoundland & Labrador	219,600	32,500	12.9%
P.E.I.	70,400	7,300	9.4%
Nova Scotia	450,900	39,400	8.0%
New Brunswick	362,500	28,700	7.3%
Quebec	3,839,100	299,400	7.2%
Ontario	6,555,700	466,700	6.6%
Manitoba	592,700	29,600	4.8%
Saskatchewan	502,600	20,600	3.9%
Alberta	1,950,700	67,900	3.4%
B.C.	2,249,100	104,700	4.4%

This table shows that Yukon (along with Saskatchewan) ranks second in the country in terms of the unemployment rate (3.9%). Alberta's unemployment rate (3.4%) was first, while Newfoundland's rate (12.9%) ranked eleventh.

Note: the NWT's figure of 5.4% and Nunavut's (10 largest communities) figure of 7.7% are available only as "unadjusted" estimates and therefore are not included in this table of seasonally adjusted data. They also, along with Yukon figures, are three-month moving averages, and therefore not included in the overall figure for Canada.

Yukon's Unemployment Rate



The unemployment rate has remained relatively stable and low over the past year. The following changes have occurred on a month to month basis:

	Percentage points*
2006	
• March to April	0.0
• April to May	0.5
• May to June	0.7
• June to July	0.0
• July to August	0.0
• August to September	0.0
• September to October	-1.1
• October to November	-0.6
• November to December	-1.3
2007	
• Dec. '06 to January '07	1.3
• January to February	-0.6
• February to March	0.0
• March to April	0.7

* percentage point is the actual numerical difference between two percentages, such as: 10% - 8% = 2 percentage points.

What is the unemployment rate, and how is it calculated?

The unemployment rate shows the relationship between the number of unemployed and the labour force. The labour force includes those individuals 15 years of age and older who are either employed or unemployed but looking for work. The higher the value of the unemployment rate, the greater the number of individuals unemployed as compared to the labour force.

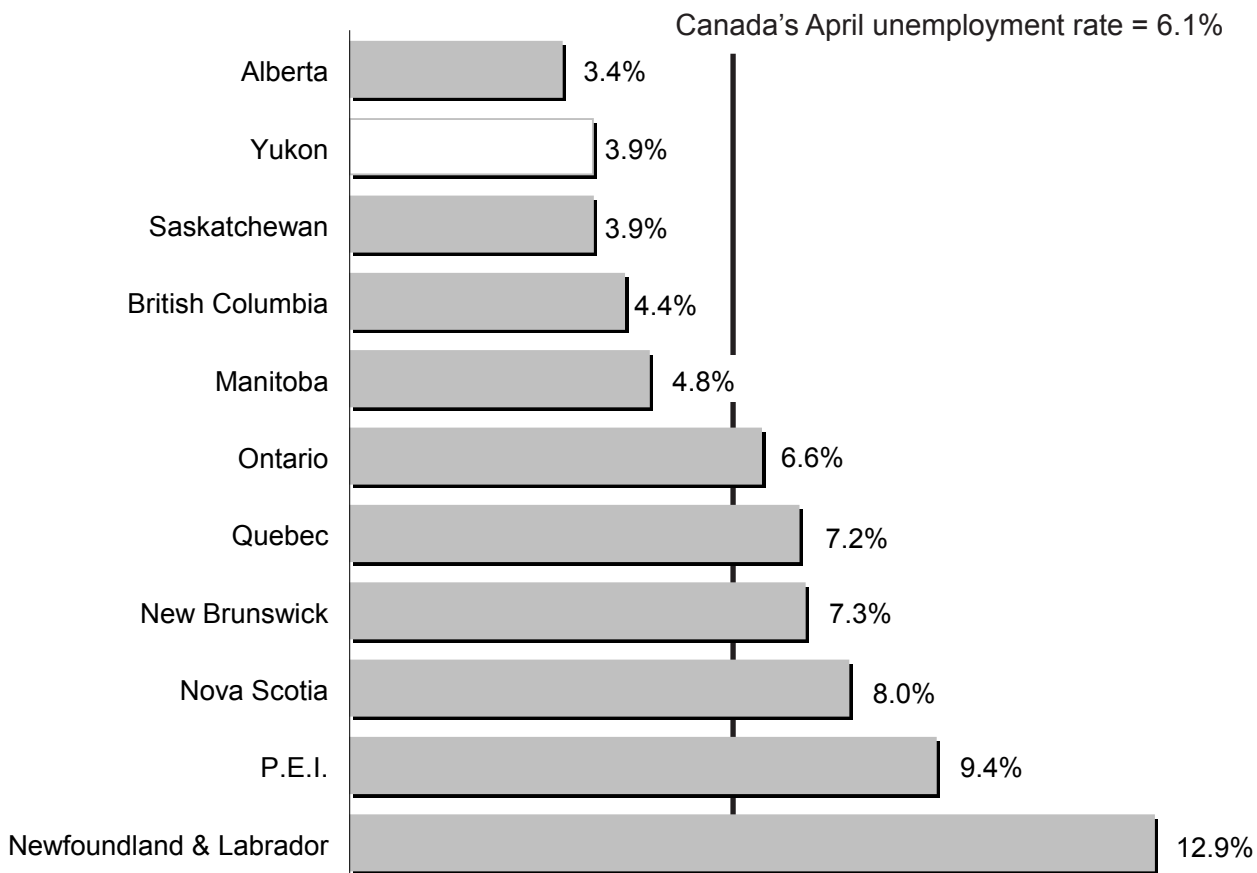
The survey that estimates the Yukon's unemployment rate, the Labour Force Survey, or LFS, has been in operation in the Yukon since January 1992.

Over the last 16 years the average unemployment rate for April has been 9.5%.

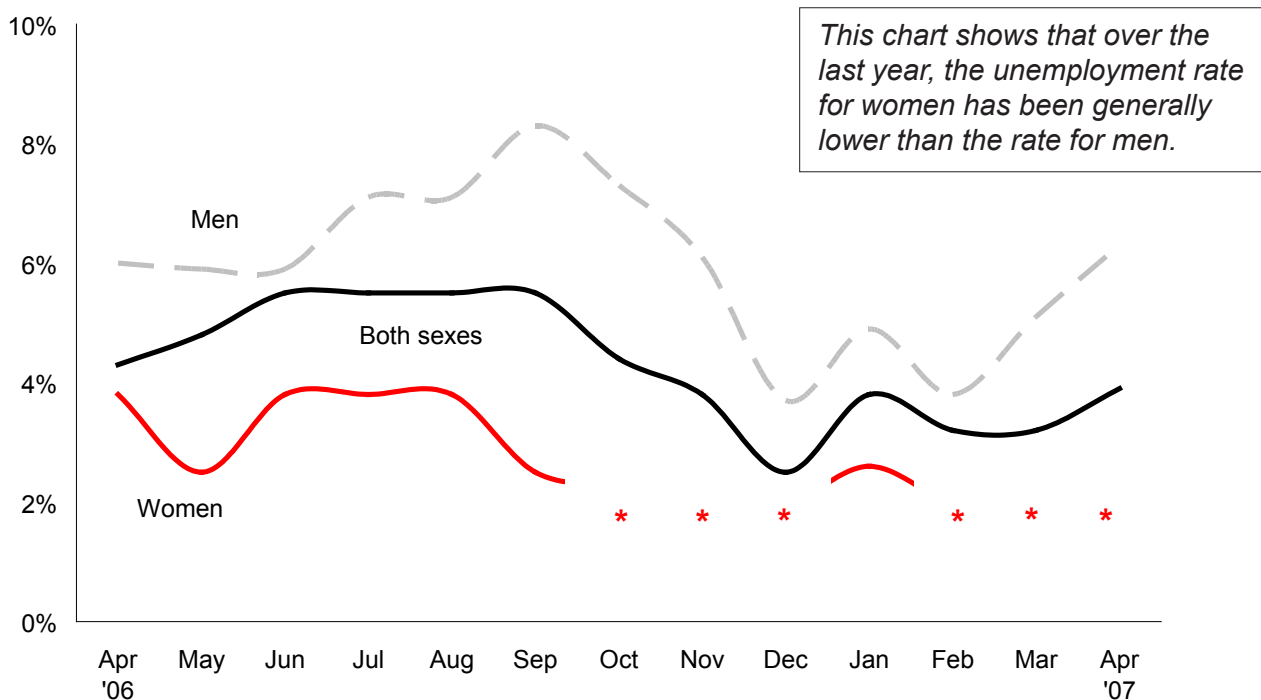
Looking at the change in the unemployment rate between March and April in previous years, since 1992 the rate has fallen 8 times, risen 6 times, and stayed the same twice.

	March	April	Change
2007	3.2%	3.9%	0.7%
2006	4.3%	4.3%	0.0%
2005	4.2%	4.8%	0.6%
2004	6.4%	5.6%	-0.8%
2003	9.3%	9.3%	0.0%
2002	9.9%	8.6%	-1.3%
2001	10.6%	11.4%	0.8%
2000	10.2%	9.5%	-0.7%
1999	14.6%	13.9%	-0.7%
1998	14.0%	15.8%	1.8%
1997	14.1%	13.6%	-0.5%
1996	9.2%	9.6%	0.4%
1995	7.7%	7.6%	-0.1%
1994	11.7%	11.0%	-0.7%
1993	13.9%	14.6%	0.7%
1992	9.0%	8.3%	-0.7%
Average 1992 to 2007	9.5%	9.5%	0.0%

Unemployment rates: Canada, Provinces and Yukon — April 2007



Monthly Unemployment Rates for the Yukon Labour Force Aged 15 and Over



* Suppressed for confidentiality reasons (See explanation on page 11)

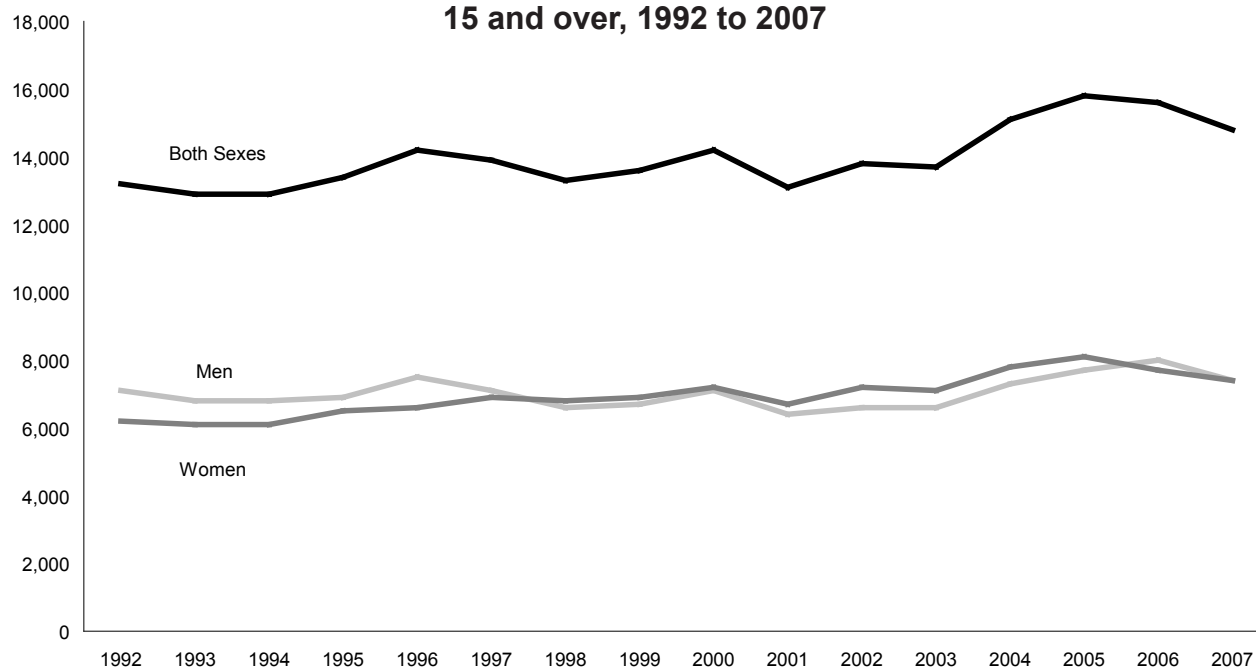
Yukon's Labour Force Aged 15 and Over Continued. . .

		Labour Force			Employment			Unemployment		
		Both Sexes	Men	Women	Both Sexes	Men	Women	Both Sexes	Men	Women
2007	Apr	15,400	7,900	7,500	14,800	7,400	7,400	600	500	*
	Mar	15,400	7,900	7,500	14,900	7,400	7,400	500	400	*
	Feb	15,500	7,800	7,600	15,000	7,500	7,500	500	300	*
	Jan	15,800	8,100	7,700	15,200	7,700	7,500	600	400	200
2006	Dec	15,700	8,100	7,600	15,300	7,800	7,500	400	300	*
	Nov	15,900	8,200	7,700	15,300	7,700	7,600	600	500	*
	Oct	15,900	8,200	7,700	15,200	7,600	7,600	700	600	*
	Sep	16,300	8,400	7,900	15,400	7,600	7,700	900	700	200
	Aug	16,300	8,400	7,900	15,500	7,800	7,700	900	600	300
	Jul	16,500	8,500	8,000	15,600	7,900	7,700	900	600	300
	Jun	16,500	8,500	8,000	15,700	8,000	7,700	900	500	300
	May	16,500	8,500	8,000	15,700	7,900	7,800	800	500	200
	Apr	16,400	8,400	8,000	15,600	8,000	7,700	700	500	300
2005	Apr (r)	16,600	8,300	8,300	15,800	7,700	8,100	800	600	200
2004	Apr (r)	16,000	8,000	8,000	15,100	7,300	7,800	900	700	300
2003	Apr (r)	15,100	7,400	7,700	13,700	6,600	7,100	1,400	800	600
2002	Apr (r)	15,200	7,600	7,600	13,800	6,600	7,200	1,300	900	400
2001	Apr (r)	14,900	7,500	7,300	13,100	6,400	6,700	1,700	1,100	600
2000	Apr (r)	15,800	8,100	7,700	14,200	7,100	7,200	1,500	1,000	500
1999	Apr (r)	15,800	8,200	7,600	13,600	6,700	6,900	2,200	1,500	700
1998	Apr (r)	15,800	8,300	7,500	13,300	6,600	6,800	2,500	1,700	800
1997	Apr (r)	16,200	8,600	7,600	13,900	7,100	6,900	2,200	1,500	800
1996	Apr (r)	15,700	8,300	7,300	14,200	7,500	6,600	1,500	800	700
1995	Apr (r)	14,400	7,600	6,900	13,400	6,900	6,500	1,100	600	400
1994	Apr (r)	14,500	7,700	6,700	12,900	6,800	6,100	1,600	1,000	600
1993	Apr (r)	15,100	8,200	6,900	12,900	6,800	6,100	2,200	1,400	800
1992	Apr (r)	14,500	7,800	6,700	13,200	7,100	6,200	1,200	700	500
Average Apr 1992 to 2007		15,500	8,000	7,500	14,000	7,000	7,000	1,500	1,000	500

(r) revised

* Suppressed for confidentiality reasons (See explanation on page 11)

Number of Employed for April, 15 and over, 1992 to 2007



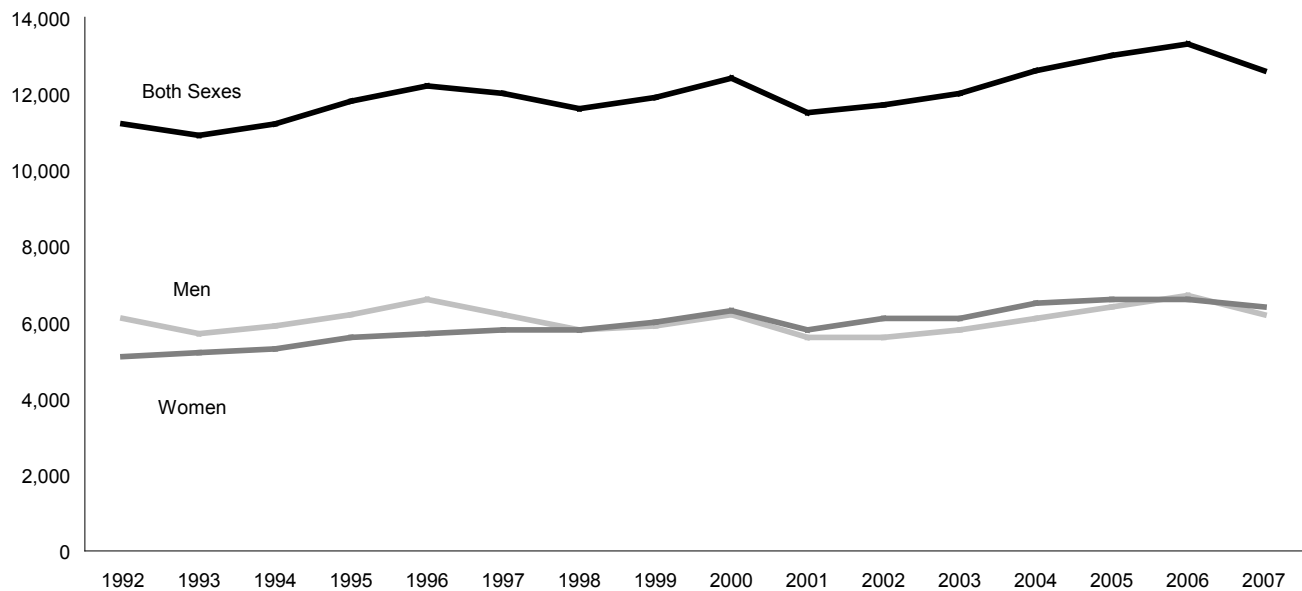
Yukon's Labour Force, Aged 25 and Over

		Labour Force			Employment			Unemployment		
		Both Sexes	Men	Women	Both Sexes	Men	Women	Both Sexes	Men	Women
2007	Apr	13,000	6,500	6,500	12,600	6,200	6,400	400	300	*
	Mar	12,900	6,400	6,500	12,700	6,300	6,400	200	*	*
	Feb	13,100	6,400	6,700	12,900	6,300	6,600	200	*	*
	Jan	13,300	6,700	6,600	13,000	6,500	6,500	300	200	200
2006	Dec	13,200	6,600	6,600	13,000	6,500	6,500	300	200	*
	Nov	13,400	6,700	6,700	13,100	6,400	6,600	400	300	*
	Oct	13,400	6,800	6,700	13,000	6,400	6,600	400	300	*
	Sep	13,600	6,800	6,800	13,100	6,400	6,700	500	400	*
	Aug	13,500	6,800	6,700	13,000	6,500	6,500	500	400	200
	Jul	13,500	6,800	6,600	13,000	6,500	6,400	500	300	200
	Jun	13,600	6,900	6,700	13,200	6,600	6,500	500	200	200
	May	13,600	6,900	6,800	13,200	6,600	6,600	400	200	200
	Apr	13,700	6,900	6,900	13,300	6,700	6,600	400	200	200
2005	Apr (r)	13,600	6,800	6,800	13,000	6,400	6,600	600	400	200
2004	Apr (r)	13,300	6,600	6,700	12,600	6,100	6,500	700	400	200
2003	Apr (r)	13,000	6,400	6,600	12,000	5,800	6,100	1,100	600	400
2002	Apr (r)	12,700	6,400	6,400	11,700	5,600	6,100	1,000	700	300
2001	Apr (r)	12,800	6,400	6,400	11,500	5,600	5,800	1,300	800	500
2000	Apr (r)	13,500	6,900	6,600	12,400	6,200	6,300	1,100	800	300
1999	Apr (r)	13,500	7,000	6,500	11,900	5,900	6,000	1,600	1,100	500
1998	Apr (r)	13,400	7,100	6,400	11,600	5,800	5,800	1,800	1,200	600
1997	Apr (r)	13,500	7,200	6,300	12,000	6,200	5,800	1,500	1,000	500
1996	Apr (r)	13,200	7,100	6,100	12,200	6,600	5,700	1,000	500	500
1995	Apr (r)	12,600	6,600	5,900	11,800	6,200	5,600	700	400	300
1994	Apr (r)	12,400	6,600	5,800	11,200	5,900	5,300	1,100	600	500
1993	Apr (r)	12,700	6,800	5,900	10,900	5,700	5,200	1,800	1,100	700
1992	Apr (r)	12,100	6,600	5,600	11,200	6,100	5,100	1,000	500	400
Average Apr 1992 to 2007		13,100	6,700	6,300	12,000	6,100	6,000	1,100	700	400

(r) revised

* Suppressed for confidentiality reasons (See explanation on page 11)

Number of Employed for April, 25 and over, 1992 to 2007

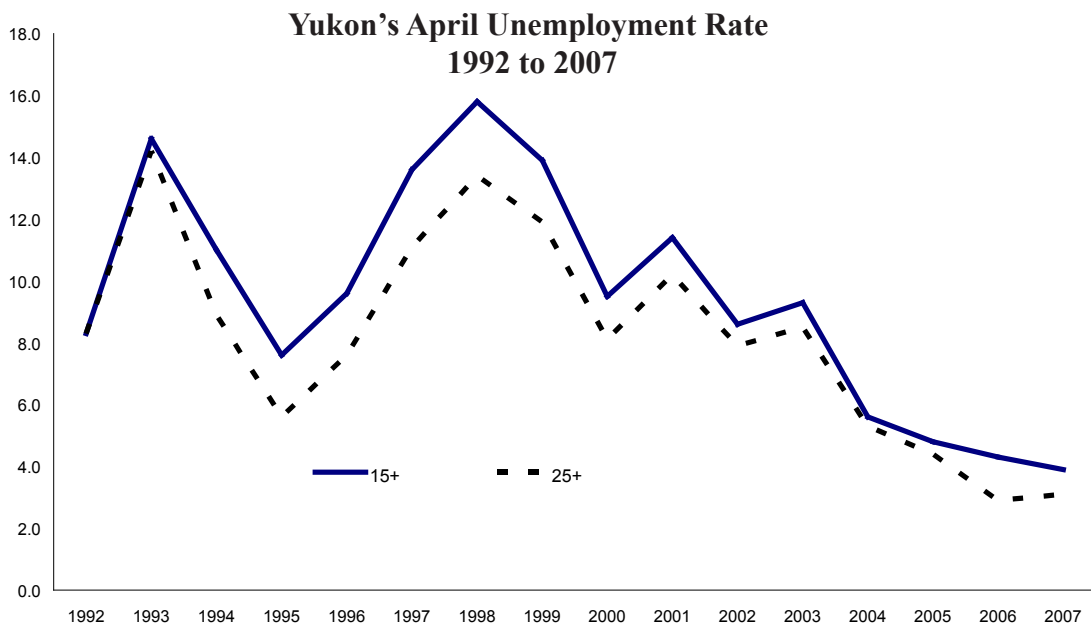


Yukon's Unemployment Rate

		15 years and older Unemployment Rate (%)			25 years and older Unemployment Rate (%)		
		Both Sexes	Men	Women	Both Sexes	Men	Women
2007	Apr	3.9	6.3	*	3.1	4.6	*
	Mar	3.2	5.1	*	1.6	*	*
	Feb	3.2	3.8	*	1.5	*	*
	Jan	3.8	4.9	2.6	2.3	3.0	3.0
2006	Dec	2.5	3.7	*	2.3	3.0	*
	Nov	3.8	6.1	*	3.0	4.5	*
	Oct	4.4	7.3	*	3.0	4.4	*
	Sep	5.5	8.3	2.5	3.7	5.9	*
	Aug	5.5	7.1	3.8	3.7	5.9	3.0
	Jul	5.5	7.1	3.8	3.7	4.4	3.0
	Jun	5.5	5.9	3.8	3.7	2.9	3.0
	May	4.8	5.9	2.5	2.9	2.9	2.9
Apr	4.3	6.0	3.8	2.9	2.9	2.9	
2005	Apr (r)	4.8	7.2	2.4	4.4	5.9	2.9
2004	Apr (r)	5.6	8.8	3.8	5.3	6.1	3.0
2003	Apr (r)	9.3	10.8	7.8	8.5	9.4	6.1
2002	Apr (r)	8.6	11.8	5.3	7.9	10.9	4.7
2001	Apr (r)	11.4	14.7	8.2	10.2	12.5	7.8
2000	Apr (r)	9.5	12.3	6.5	8.1	11.6	4.5
1999	Apr (r)	13.9	18.3	9.2	11.9	15.7	7.7
1998	Apr (r)	15.8	20.5	10.7	13.4	16.9	9.4
1997	Apr (r)	13.6	17.4	10.5	11.1	13.9	7.9
1996	Apr (r)	9.6	9.6	9.6	7.6	7.0	8.2
1995	Apr (r)	7.6	7.9	5.8	5.6	6.1	5.1
1994	Apr (r)	11.0	13.0	9.0	8.9	9.1	8.6
1993	Apr (r)	14.6	17.1	11.6	14.2	16.2	11.9
1992	Apr (r)	8.3	9.0	7.5	8.3	7.6	7.1
Average Apr 1992 to 2007		9.5	11.9	7.4	8.2	9.8	6.5

(r) revised

* Suppressed for confidentiality reasons (See explanation on page 11)



Yukon's Employment - *seasonally unadjusted figures*

A word about “adjusted” vs. “unadjusted”

The statistics on the next 5 pages are “seasonally unadjusted,” as opposed to the figures on pages 1 through 6, which are “seasonally adjusted.”

“Seasonally adjusted” refers to the technique of adjusting the “raw” figures to remove seasonal movements (*see page 12 for further explanation*). As such, “seasonally adjusted” employment figures are widely used and quoted, as they are considered to be a more accurate picture of the current employment situation than the “raw” or “unadjusted” figures.

Some of the variables mentioned in the next 5 pages are available only in the “unadjusted” format, while others are available both as “adjusted” and “unadjusted.” Comparisons between the “adjusted” and “unadjusted” series should not be made.

Yukon's Labour Force Characteristics (*unadjusted*)

		Labour Force		Unemployed	Not in Labour Force	Unemployment Rate	Participation Rate	Employment Rate
		Employed	Employed			Rate	Rate	Rate
						----- % -----		
2007	Apr	15,200	14,400	700	6,200	4.6	71.0	67.3
	Mar	15,100	14,400	700	6,300	4.6	70.6	67.3
	Feb	15,100	14,600	500	6,300	3.3	70.6	68.2
	Jan	15,400	14,700	700	6,000	4.5	71.6	68.4
2006	Dec	15,400	15,000	400	6,100	2.6	71.6	69.8
	Nov	15,700	15,100	600	5,900	3.8	73.0	70.2
	Oct	16,000	15,400	600	5,500	3.8	74.4	71.6
	Sep	16,900	16,100	800	4,700	4.7	78.6	74.9
	Aug	17,200	16,400	800	4,300	4.7	80.0	76.3
	Jul	17,200	16,300	900	4,300	5.2	80.0	75.8
	Jun	16,700	15,800	900	4,900	5.4	77.7	73.5
	May	16,400	15,600	800	5,100	4.9	76.3	72.6
	Apr	16,100	15,200	800	5,500	5.0	74.5	70.4
2005	Apr	16,200	15,300	900	5,300	5.6	75.3	71.2
2004	Apr	15,700	14,600	1,100	5,500	7.0	74.1	68.9
2003	Apr	14,900	13,300	1,600	5,700	10.7	72.7	64.9
2002	Apr	14,900	13,400	1,500	5,100	10.1	74.5	67.0
2001	Apr	14,600	12,700	1,900	5,300	13.0	73.7	64.1
2000	Apr	15,400	13,600	1,700	4,500	11.0	77.4	68.3
1999	Apr	15,400	13,000	2,400	4,400	15.6	77.4	65.3
1998	Apr	15,400	12,700	2,700	4,600	17.5	77.0	63.5
1997	Apr	15,700	13,300	2,400	4,500	15.3	77.7	65.8
1996	Apr	15,200	13,400	1,700	4,300	11.2	77.9	68.7
1995	Apr	14,000	12,700	1,300	4,700	9.3	74.9	67.9
1994	Apr	14,100	12,300	1,800	4,400	12.8	76.2	66.5
1993	Apr	14,600	12,200	2,400	4,200	16.4	77.7	64.9
1992	Apr	14,000	12,600	1,400	4,400	10.0	76.1	68.5
Average Apr 1992 to 2007		15,100	13,400	1,600	4,900	10.9	75.5	67.1

Note: Due to rounding, the sum of individual LFS characteristics at times does not equal the labour force and/or total employment figures. Percentages have been adjusted on the basis of the reported unemployment rate. All figures quoted for the Yukon are three-month moving averages. For a definition of three-month moving average, please go to the list of definitions on page 12.

Full-time and Part-time Employment

		Total Employed	Full-time	% of all employed	Part-time	% of all employed
2007	Apr	14,400	12,000	83.3%	2,400	16.7%
	Mar	14,400	12,300	85.4%	2,200	15.3%
	Feb	14,600	12,500	85.6%	2,000	13.7%
	Jan	14,700	12,600	85.7%	2,200	15.0%
2006	Dec	15,000	12,800	85.3%	2,200	14.7%
	Nov	15,100	12,700	84.1%	2,400	15.9%
	Oct	15,400	13,100	85.1%	2,300	14.9%
	Sep	16,100	14,100	87.6%	2,000	12.4%
	Aug	16,400	14,700	89.6%	1,800	11.0%
	Jul	16,300	14,500	89.0%	1,900	11.7%
	Jun	15,800	13,600	86.1%	2,200	13.9%
	May	15,600	13,100	84.0%	2,500	16.0%
	Apr	15,200	12,600	82.9%	2,600	17.1%
	2005	Apr	15,300	13,000	85.0%	2,300
2004	Apr	14,600	12,100	82.9%	2,600	17.8%
2003	Apr	13,300	11,200	84.2%	2,100	15.8%
2002	Apr	13,400	10,500	78.4%	2,800	20.9%
2001	Apr	12,700	10,200	80.3%	2,500	19.7%
2000	Apr	13,600	10,500	77.2%	3,100	22.8%
1999	Apr	13,000	10,300	79.2%	2,700	20.8%
1998	Apr	12,700	10,200	80.3%	2,500	19.7%
1997	Apr	13,300	10,700	80.5%	2,600	19.5%
1996	Apr	13,400	11,200	83.6%	2,200	16.4%
1995	Apr	12,700	10,600	83.5%	2,100	16.5%
1994	Apr	12,300	10,300	83.7%	1,900	15.4%
1993	Apr	12,200	10,000	82.0%	2,200	18.0%
1992	Apr	12,600	10,500	83.3%	2,100	16.7%
Average Apr 1992 to 2007		13,400	11,000	82.1%	2,400	17.9%

Employment in Goods- and Service-Producing Industries

		Total Employed	Goods- Producing Industries	Service- Producing Industries			Total Employed	Goods- Producing Industries	Service- Producing Industries
2007	Apr	14,400	1,900	12,600	2005	Apr	15,300	1,600	13,700
	Mar	14,400	1,900	12,600		Apr	14,600	1,200	13,400
	Feb	14,600	1,900	12,700		Apr	13,300	1,200	12,000
	Jan	14,700	1,900	12,800		Apr	13,400	1,500	11,800
2006	Dec	15,000	2,100	12,900	Apr	12,700	1,300	11,300	
	Nov	15,100	2,200	12,900	Apr	13,600	1,500	12,100	
	Oct	15,400	2,300	13,100	Apr	13,000	1,300	11,700	
	Sep	16,100	2,100	14,000	Apr	12,700	1,500	11,200	
	Aug	16,400	2,000	14,400	Apr	13,300	1,700	11,500	
	Jul	16,300	2,000	14,400	Apr	13,400	1,900	11,500	
	Jun	15,800	2,000	13,800	Apr	12,700	1,500	11,200	
	May	15,600	2,000	13,600	Apr	12,300	1,500	10,800	
	Apr	15,200	2,000	13,200	Apr	12,200	1,700	10,500	
						Apr	12,600	1,900	10,700
Average Apr 1992 to 2007		13,400	1,600	11,800			13,400	1,600	11,800

Public and Private Sector Employment

		Total Employed	Public Sector*	Private Sector		
			Employees	Employees	Self- Employed	Total Private Sector
2007	Apr	14,400	5,500	6,500	2,400	8,900
	Mar	14,400	5,400	6,500	2,500	9,000
	Feb	14,600	5,400	6,500	2,600	9,100
	Jan	14,700	5,300	6,700	2,800	9,500
2006	Dec	15,000	5,400	6,900	2,700	9,600
	Nov	15,100	5,400	6,700	2,900	9,600
	Oct	15,400	5,500	7,100	2,900	10,000
	Sep	16,100	5,900	7,400	2,700	10,100
	Aug	16,400	6,200	7,600	2,600	10,200
	Jul	16,300	6,200	7,600	2,500	10,100
	Jun	15,800	6,000	7,400	2,400	9,800
	May	15,600	5,500	7,500	2,500	10,000
	Apr	15,200	5,300	7,400	2,500	9,900
	2005	Apr	15,300	5,900	6,700	2,600
2004	Apr	14,600	5,700	6,700	2,200	8,900
2003	Apr	13,300	5,100	6,000	2,100	8,100
2002	Apr	13,400	5,300	5,700	2,400	8,100
2001	Apr	12,700	5,600	4,500	2,500	7,000
2000	Apr	13,600	5,600	5,200	2,800	8,000
1999	Apr	13,000	5,600	4,900	2,500	7,400
1998	Apr	12,700	5,100	5,500	2,100	7,600
1997	Apr	13,300	4,700	6,100	2,500	8,600
1996	Apr	13,400	4,800	6,500	2,200	8,700
1995	Apr	12,700	4,700	5,900	2,100	8,000
1994	Apr	12,300	4,600	5,300	2,400	7,700
1993	Apr	12,200	4,500	5,900	1,800	7,700
1992	Apr	12,600	4,800	5,900	2,000	7,900
Average Apr 1992 to 2007		13,400	5,200	5,900	2,300	8,200

* includes Federal, Territorial, Municipal, and First Nation Band Office employment

Labour Force

		By age			By sex & age				% Change Apr 2006 to Apr 2007
		15+	15-24	25+	Men		Women		
					15+	25+	15+	25+	
2007	Apr	15,200	2,300	12,900	7,800	6,400	7,400	6,500	Both 15+ -5.6% 15-24 -8.0% 25+ -5.1%
	Mar	15,100	2,300	12,800	7,700	6,300	7,400	6,500	
	Feb	15,100	2,300	12,800	7,600	6,200	7,500	6,600	
	Jan	15,400	2,400	13,100	7,900	6,500	7,600	6,600	
2006	Dec	15,400	2,300	13,100	7,900	6,500	7,500	6,600	Men 15+ -6.0% 25+ -5.9% Women 15+ -5.1% 25+ -4.4%
	Nov	15,700	2,300	13,400	8,000	6,700	7,600	6,600	
	Oct	16,000	2,500	13,500	8,300	6,900	7,800	6,700	
	Sep	16,900	3,000	13,900	8,700	7,000	8,200	6,900	
	Aug	17,200	3,400	13,800	8,900	7,000	8,300	6,800	
	Jul	17,200	3,500	13,700	8,900	6,900	8,300	6,800	
	Jun	16,700	3,000	13,700	8,600	7,000	8,000	6,700	
	May	16,400	2,800	13,600	8,400	6,900	8,000	6,800	
	Apr	16,100	2,500	13,600	8,300	6,800	7,800	6,800	

Employed

		By age			By sex & age				% Change Apr 2006 to Apr 2007	
		15+	15-24	25+	Men		Women			
					15+	25+	15+	25+		
2007	Apr	14,400	2,100	12,400	7,100	6,000	7,300	6,300	Both	
	Mar	14,400	2,000	12,500	7,100	6,100	7,300	6,400	15+	-5.3%
	Feb	14,600	2,000	12,600	7,200	6,100	7,400	6,500	15-24	-0.0%
	Jan	14,700	2,100	12,700	7,400	6,300	7,400	6,400	25+	-5.3%
2006	Dec	15,000	2,200	12,800	7,600	6,300	7,400	6,500	Men	
	Nov	15,100	2,000	13,000	7,600	6,500	7,500	6,600	15+	-7.8%
	Oct	15,400	2,200	13,200	7,800	6,600	7,600	6,600	25+	-7.7%
	Sep	16,100	2,600	13,500	8,100	6,700	8,000	6,800	Women	
	Aug	16,400	3,000	13,400	8,400	6,800	8,100	6,600	15+	-2.7%
	Jul	16,300	3,100	13,300	8,300	6,700	8,000	6,500	25+	-4.5%
	Jun	15,800	2,600	13,200	8,100	6,700	7,700	6,500		
	May	15,600	2,500	13,100	7,800	6,500	7,700	6,600		
	Apr	15,200	2,100	13,100	7,700	6,500	7,500	6,600		

Participation Rate

Change (% points) Apr 2006 to Apr 2007			By age			By sex & age					
			15+	15-24	25+	Men		Women			
						15+	25+	15+	25+		
			-----%-----			-----%-----					
Both	2007	Apr	71.0	56.1	74.6	73.6	76.2	68.5	73.0		
		Mar	70.6	56.1	74.0	72.6	75.0	68.5	73.0		
		Feb	70.6	56.1	74.0	71.0	73.8	69.4	74.2		
		Jan	71.6	57.1	75.7	73.8	77.4	70.4	74.2		
Men	2006	Dec	71.6	54.8	75.7	73.8	77.4	69.4	74.2		
		Nov	73.0	54.8	77.5	74.8	78.8	70.4	74.2		
		Oct	74.4	59.5	78.0	77.6	81.2	72.2	75.3		
		Sep	78.6	71.4	80.3	81.3	82.4	75.9	77.5		
		Aug	80.0	81.0	79.8	83.2	83.3	76.9	76.4		
		Jul	80.0	83.3	79.2	83.2	82.1	76.9	76.4		
		Jun	77.7	71.4	79.2	80.4	83.3	73.4	75.3		
		May	76.3	66.7	78.6	78.5	82.1	73.4	76.4		
		Apr	74.5	59.5	78.2	77.6	81.0	71.6	76.4		
		Women		15+	-3.5						
				25+	-3.6						
					15+	-4.0					
			25+	-4.8							
			15+	-3.1							
			25+	-3.4							

Employment Rate

		By age			By sex & age				Change (% points) Apr 2006 to Apr 2007	
		15+	15-24	25+	Men		Women			
					15+	25+	15+	25+		
			-----%-----			-----%-----				
2007	Apr	67.3	51.2	71.7	67.0	71.4	67.6	70.8	Both	
	Mar	67.3	48.8	72.3	67.0	72.6	67.6	71.9	15+	-3.1
	Feb	68.2	48.8	72.8	67.3	72.6	68.5	73.0	15-24	1.2
	Jan	68.4	50.0	73.4	69.2	75.0	68.5	71.9	25+	-3.6
2006	Dec	69.8	52.4	74.0	71.0	75.0	68.5	73.0	Men	
	Nov	70.2	47.6	75.1	71.0	76.5	69.4	74.2	15+	-5.0
	Oct	71.6	52.4	76.3	72.9	77.6	70.4	74.2	25+	-6.0
	Sep	74.9	61.9	78.0	75.7	78.8	74.1	76.4	Women	
	Aug	76.3	71.4	77.5	78.5	81.0	75.0	74.2	15+	-1.2
	Jul	75.8	73.8	76.9	77.6	79.8	74.1	73.0	25+	-3.4
	Jun	73.5	61.9	76.3	75.7	79.8	70.6	73.0		
	May	72.6	59.5	75.7	72.9	77.4	70.6	74.2		
	Apr	70.4	50.0	75.3	72.0	77.4	68.8	74.2		

Where the numbers come from

Every month Statistics Canada surveyors in each province and territory of Canada interview a representative sample of individuals 15 years of age and older. The surveyors ask these individuals if they were working, or were looking and available for work, during the “reference week” (usually the 3rd week of the month). Individuals are counted as employed if:

- they worked for at least 1 hour during the reference week (“work” includes self-employment).

Individuals are counted as unemployed if:

- they were without work but had looked for work in the past 4 weeks;
- they had been laid off but were not looking for work because they expected to return to their original work;
- they were not looking for work because they had a new job starting within 4 weeks.

If someone is neither employed nor unemployed they are then defined as not in the labour force and therefore not counted in the unemployment rate. However, they are still considered to be part of the working-age population.

The survey described above is called the Labour Force Survey (LFS). The Yukon has been included in the LFS since January 1992. However, the national rates for Canada do not include any of the territories.

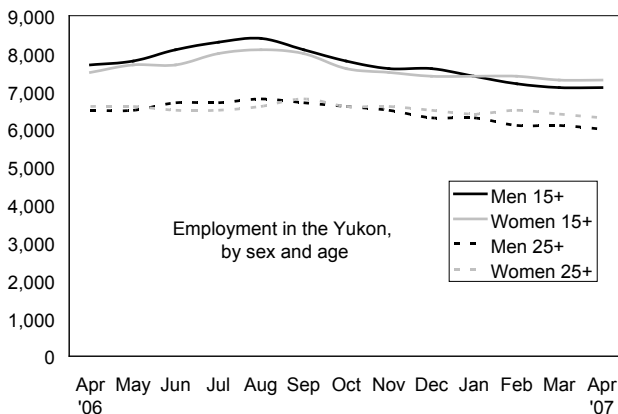
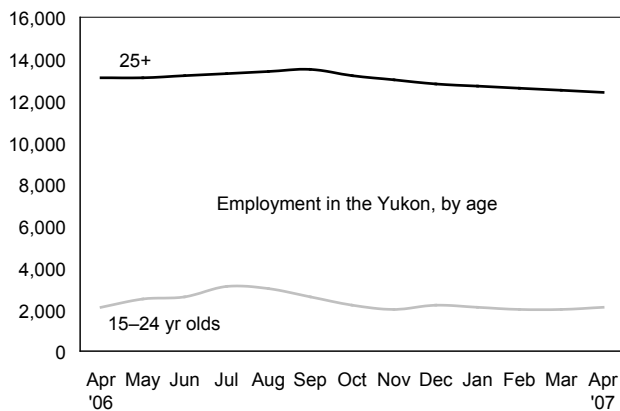
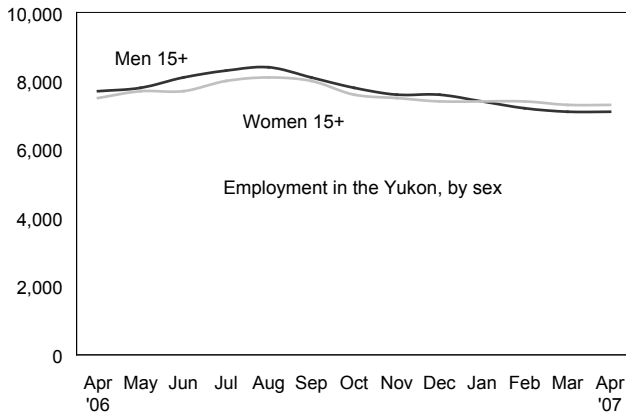
The objectives of the LFS are to divide the working-age population into three mutually exclusive classifications – employed, unemployed and not in the labour force – and to provide descriptive and explanatory data on each of these categories.

The LFS is the only source of monthly estimates of total employment including the self-employed, full- and part-time employment, and unemployment. It publishes monthly standard labour market indicators such as the unemployment rate, the employment rate and the participation rate. The LFS is a major source of information on the personal characteristics of the working-age population, including age, sex, marital status, educational attainment, and family characteristics.

In the Yukon the LFS sample is designed to represent approximately 92% of the working-age population (Yukoners 15 years of age and older). Yukoners living in unorganized areas, full-time members of the armed forces and people living in institutions are not represented in the sample.

As a “household-based” survey, the LFS counts individuals as part of the labour force in the province or territory their home is in. Therefore, if an individual is working outside of the Yukon, in the NWT for instance, but still has their home in the Yukon, they are counted in the Yukon’s labour force.

Suppression of Data. For the Labour Force Survey in the Yukon, Statistics Canada suppresses any figure that is below 200 for confidentiality reasons in order to ensure the confidentiality of each individual respondent to the survey. In turn, percentages (i.e. employment or unemployment rates) based on suppressed numbers will also be suppressed.



Definitions:

1. Employment

Employed persons are those who, during the reference week, did any work for pay or profit, or had a job and were absent from work.

2. Employment rate

Also referred to as “employment/population ratio,” it is the number of employed persons expressed as a percentage of the population aged 15 years and over. The employment rate for a particular group (for example, women aged 25 years and over) is the number employed in that group expressed as a percentage of the population for that group.

3. Goods-Producing Industries

Goods-Producing Industries (or goods sector, or goods industries): includes agriculture, other primary industries (forestry; fishing and trapping; mines, quarries and oil wells), manufacturing, construction and utilities (electric power, gas and water).

4. Labour force

The labour force is the civilian non-institutional population 15 years of age and over who, during the survey reference week, were employed or unemployed.

5. Not in the labour force

Persons not in the labour force are those who, during the reference week, were unwilling or unable to offer or supply labour services under conditions existing in their labour markets; that is, they were neither employed nor unemployed.

6. Participation rate

The participation rate is the total labour force expressed as a percentage of the population aged 15 years and over. The participation rate for a particular group (for example, women aged 25 years and over) is the labour force in that group expressed as a percentage of the population for that group.

7. Reference Week

The reference week is the entire calendar week (from Sunday to Saturday) covered by the Labour Force Survey each month. It is usually the week containing the 15th day of the month. The interviews are conducted during the following week, called the Survey Week, and the labour force status determined is that of the reference week.

8. Seasonal adjustment

Fluctuations in economic time series are caused by seasonal, cyclical and irregular movements. A seasonally adjusted series is one from which seasonal movements have been eliminated. Seasonal movements are defined as those that are caused by regular annual events such as climate, holidays, vacation periods and cycles related to crops, production and retail sales associated with Christmas and Easter. It should be noted that the seasonally adjusted series contain irregular as well as longer-term cyclical fluctuations.

9. Self-employed

There are two broad categories of workers: those who work for others and those who work for themselves, namely, the self-employed. The self-employed includes working owners of incorporated businesses, working owners of unincorporated businesses and other self-employed.

10. Service-Producing Industries

Service-Producing Industries (or service sector, or service industries): includes trade; transportation and warehousing; finance, insurance, real estate and leasing; professional, scientific and technical services; management, administrative and other support; educational services; health care and social assistance; information, culture and recreation; accommodation and food services; other services; and public administration.

11. Three-Month Moving Average

All monthly figures for the Territories, whether seasonally adjusted or unadjusted, are three-month moving averages – for example, the March 2004 unemployment rate of 6.0% is actually an average of the unemployment rates for the months of January, February and March. April's unemployment rate will become the average of the rates for February, March and April.

12. Unemployment

Unemployed persons are those who, during the reference week, were available for work and were either on temporary layoff, had looked for work in the past four weeks, or had a job to start within the next four weeks.

13. Unemployment rate

The unemployment rate is the number of unemployed persons expressed as a percentage of the labour force. The unemployment rate for a particular group (age, sex, marital status, etc.) is the number unemployed in that group expressed as a percentage of the labour force for that group.

Information sheet no. 34.180–May '07
Next release date: June 11th, 2007