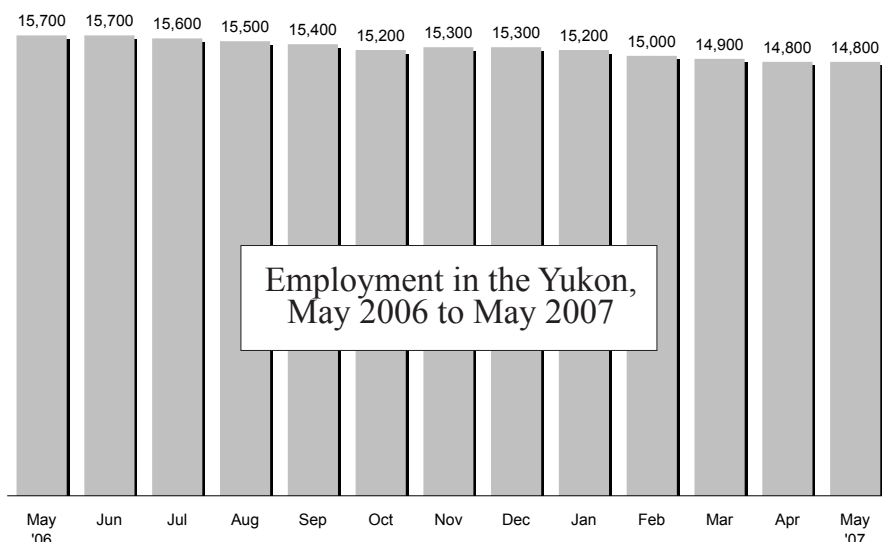


YUKON BUREAU OF STATISTICS

2 ÷ 9 # 1 \$ > 0 - 2 + 6 & ± 3 < 3 π 7 4 5 + 9 ≈ 1 ∞ ^

Yukon Employment May 2007



Yukon's labour force decreased by 1,100 from May 2006 (16,500) to May 2007 (15,400). Of the May 2007 figure, 14,800 or 95.5% were employed and 700 or 4.5% were unemployed. One year ago, in May 2006, there were 16,500 individuals in the labour force of whom 15,700 or 95.2% were employed and 800 or 4.8% were unemployed.

As of January 2007, Statistics Canada made minor revisions to the Yukon seasonally adjusted data back to 1992.

May 2007 Employment at a glance:

- Labour force: 15,400
- Employment: 14,800
- Unemployment: 700
- Unemployment rate: 4.5%

-Last month 3.9%

-One year ago 4.8%

What's inside:

Seasonally Adjusted Figures

Employment.....	1
Canada/provinces.....	1
Unemployment rate	2
Canada/provinces.....	3
15+ Labour Force	3
25+ Labour Force	5
Unemployment rate	6

Seasonally Unadjusted Figures

Labour Force Characteristics	7
Full-/Part-time employment	8
Goods-/Service-producing sectors ..	9
Public/Private sector employment ..	9
By sex & age:.....	9
Labour force.....	9
Employed.....	10
Participation rate.....	10
Employment rate.....	10
Where the numbers come from.....	11
Definitions	12

PLEASE NOTE: Due to rounding, the sum of individual Labour Force Survey characteristics at times does not equal the labour force and/or total employment figures. Percentages have been adjusted on the basis of the reported unemployment rate. All figures quoted for the Yukon are three-month moving averages. For a definition of three-month moving average, please go to the list of definitions on page 12.

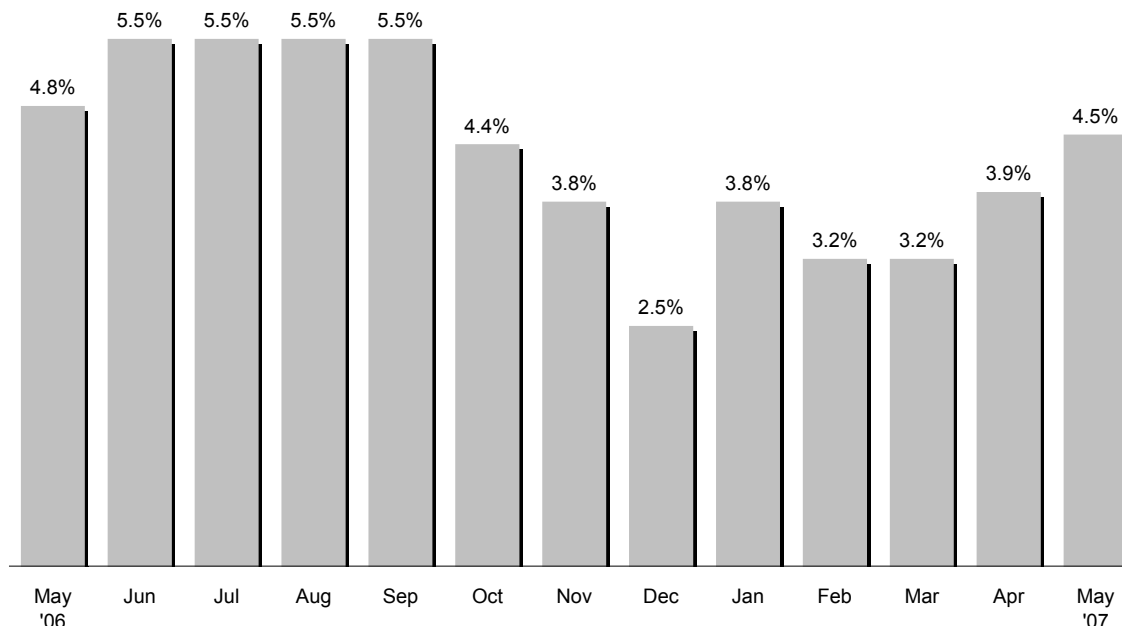
Figures From Across Canada—May 2007

	Number Employed	Number Unemployed	Unemployment Rate
Yukon	14,800	700	4.5%
Canada	16,802,500	1,083,600	6.1%
Newfoundland & Labrador	218,500	32,400	12.9%
P.E.I.	69,000	7,700	10.0%
Nova Scotia	446,500	38,800	8.0%
New Brunswick	361,000	30,700	7.8%
Quebec	3,836,900	297,300	7.2%
Ontario	6,567,600	444,300	6.3%
Manitoba	595,400	32,500	5.2%
Saskatchewan	501,100	23,600	4.5%
Alberta	1,943,100	77,200	3.8%
B.C.	2,263,300	99,100	4.2%

This table shows that Yukon (along with Saskatchewan) ranks third in the country in terms of the unemployment rate (4.5%). Alberta's unemployment rate (3.8%) was first, while Newfoundland's rate (12.9%) ranked eleventh.

Note: the NWT's figure of 5.4% and Nunavut's (10 largest communities) figure of 9.0% are available only as "unadjusted" estimates and therefore are not included in this table of seasonally adjusted data. They also, along with Yukon figures, are three-month moving averages, and therefore not included in the overall figure for Canada.

Yukon's Unemployment Rate



The unemployment rate has remained relatively stable and low over the past year. The following changes have occurred on a month to month basis:

	Percentage points*
2006	
• April to May	0.5
• May to June	0.7
• June to July	0.0
• July to August	0.0
• August to September	0.0
• September to October	-1.1
• October to November	-0.6
• November to December	-1.3
2007	
• Dec. '06 to January '07	1.3
• January to February	-0.6
• February to March	0.0
• March to April	0.7
• April to May	0.6

* percentage point is the actual numerical difference between two percentages, such as: 10% - 8% = 2 percentage points.

What is the unemployment rate, and how is it calculated?

The unemployment rate shows the relationship between the number of unemployed and the labour force. The labour force includes those individuals 15 years of age and older who are either employed or unemployed but looking for work. The higher the value of the unemployment rate, the greater the number of individuals unemployed as compared to the labour force.

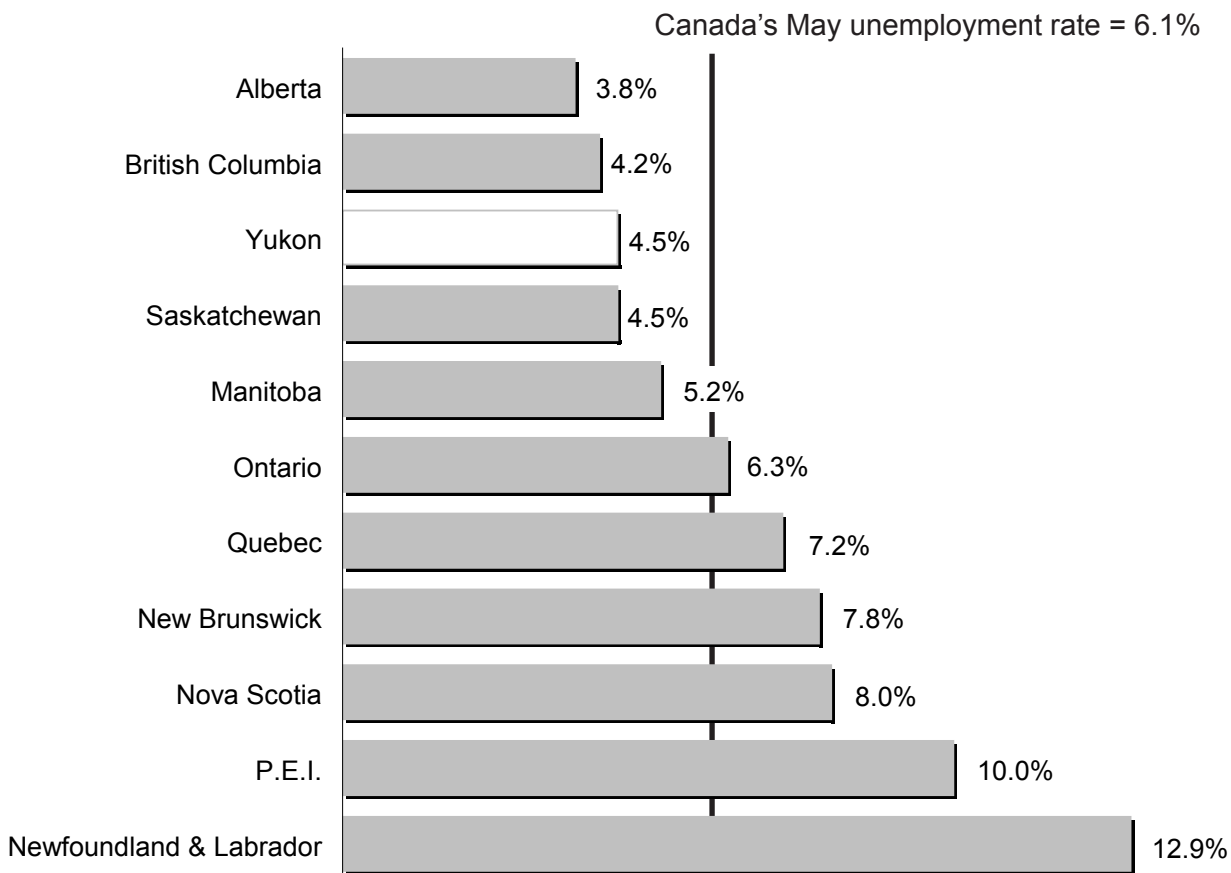
The survey that estimates the Yukon's unemployment rate, the Labour Force Survey, or LFS, has been in operation in the Yukon since January 1992.

Over the last 16 years the average unemployment rate for May has been 10.1%.

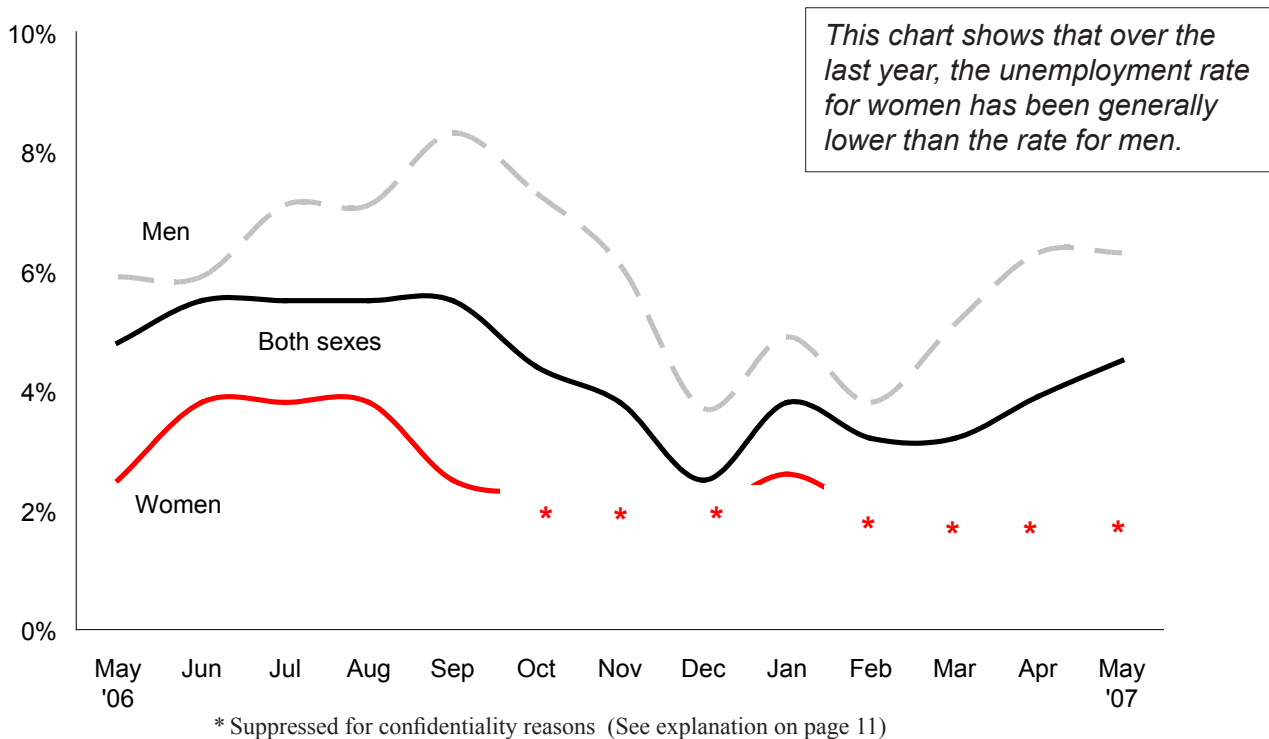
Looking at the change in the unemployment rate between April and May in previous years, since 1992 the rate has fallen 3 times, risen 12 times, and stayed the same once.

	April	May	Change
2007	3.2%	4.5%	1.3%
2006	4.3%	4.8%	0.5%
2005	4.8%	4.9%	0.1%
2004	5.6%	6.2%	0.6%
2003	9.3%	10.5%	1.2%
2002	8.6%	9.2%	0.6%
2001	11.4%	13.7%	2.3%
2000	9.5%	10.8%	1.3%
1999	13.9%	15.2%	1.3%
1998	15.8%	15.0%	-0.8%
1997	13.6%	13.6%	0.0%
1996	9.6%	9.4%	-0.2%
1995	7.6%	8.1%	0.5%
1994	11.0%	10.9%	-0.1%
1993	14.6%	15.8%	1.2%
1992	8.3%	9.5%	1.2%
Average 1992 to 2007	9.4%	10.1%	-0.7%

Unemployment rates: Canada, Provinces and Yukon — May 2007



Monthly Unemployment Rates for the Yukon Labour Force Aged 15 and Over



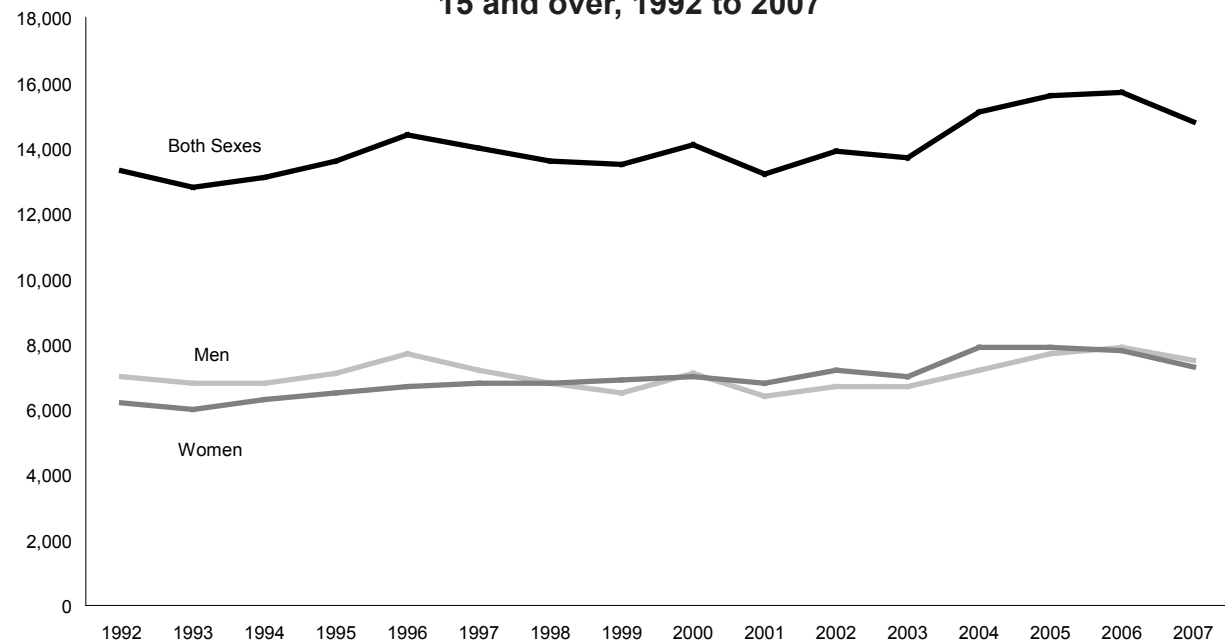
Yukon's Labour Force Aged 15 and Over Continued. . .

		Labour Force			Employment			Unemployment		
		Both Sexes	Men	Women	Both Sexes	Men	Women	Both Sexes	Men	Women
2007	May	15,400	8,000	7,500	14,800	7,500	7,300	700	500	*
	Apr	15,400	7,900	7,500	14,800	7,400	7,400	600	500	*
	Mar	15,400	7,900	7,500	14,900	7,400	7,400	500	400	*
	Feb	15,500	7,800	7,600	15,000	7,500	7,500	500	300	*
	Jan	15,800	8,100	7,700	15,200	7,700	7,500	600	400	200
2006	Dec	15,700	8,100	7,600	15,300	7,800	7,500	400	300	*
	Nov	15,900	8,200	7,700	15,300	7,700	7,600	600	500	*
	Oct	15,900	8,200	7,700	15,200	7,600	7,600	700	600	*
	Sep	16,300	8,400	7,900	15,400	7,600	7,700	900	700	200
	Aug	16,300	8,400	7,900	15,500	7,800	7,700	900	600	300
	Jul	16,500	8,500	8,000	15,600	7,900	7,700	900	600	300
	Jun	16,500	8,500	8,000	15,700	8,000	7,700	900	500	300
	May	16,500	8,500	8,000	15,700	7,900	7,800	800	500	200
2005	May (r)	16,400	8,300	8,100	15,600	7,700	7,900	800	600	300
2004	May (r)	16,200	7,900	8,200	15,100	7,200	7,900	1,000	700	400
2003	May (r)	15,300	7,600	7,700	13,700	6,700	7,000	1,600	900	700
2002	May (r)	15,300	7,700	7,700	13,900	6,700	7,200	1,400	1,000	400
2001	May (r)	15,300	7,700	7,500	13,200	6,400	6,800	2,100	1,300	800
2000	May (r)	15,800	8,200	7,600	14,100	7,100	7,000	1,700	1,100	600
1999	May (r)	15,800	8,200	7,700	13,500	6,500	6,900	2,400	1,600	700
1998	May (r)	16,000	8,400	7,600	13,600	6,800	6,800	2,400	1,600	800
1997	May (r)	16,200	8,500	7,700	14,000	7,200	6,800	2,200	1,400	900
1996	May (r)	15,900	8,500	7,400	14,400	7,700	6,700	1,500	800	700
1995	May (r)	14,800	7,900	6,900	13,600	7,100	6,500	1,200	800	400
1994	May (r)	14,700	7,800	6,900	13,100	6,800	6,300	1,600	1,000	600
1993	May (r)	15,200	8,200	7,000	12,800	6,800	6,000	2,400	1,400	1,000
1992	May (r)	14,700	7,900	6,800	13,300	7,000	6,200	1,400	800	600
Average May 1992 to 2007		15,600	8,100	7,500	14,000	7,100	6,900	1,600	1,000	600

(r) revised

* Suppressed for confidentiality reasons (See explanation on page 11)

Number of Employed for May, 15 and over, 1992 to 2007



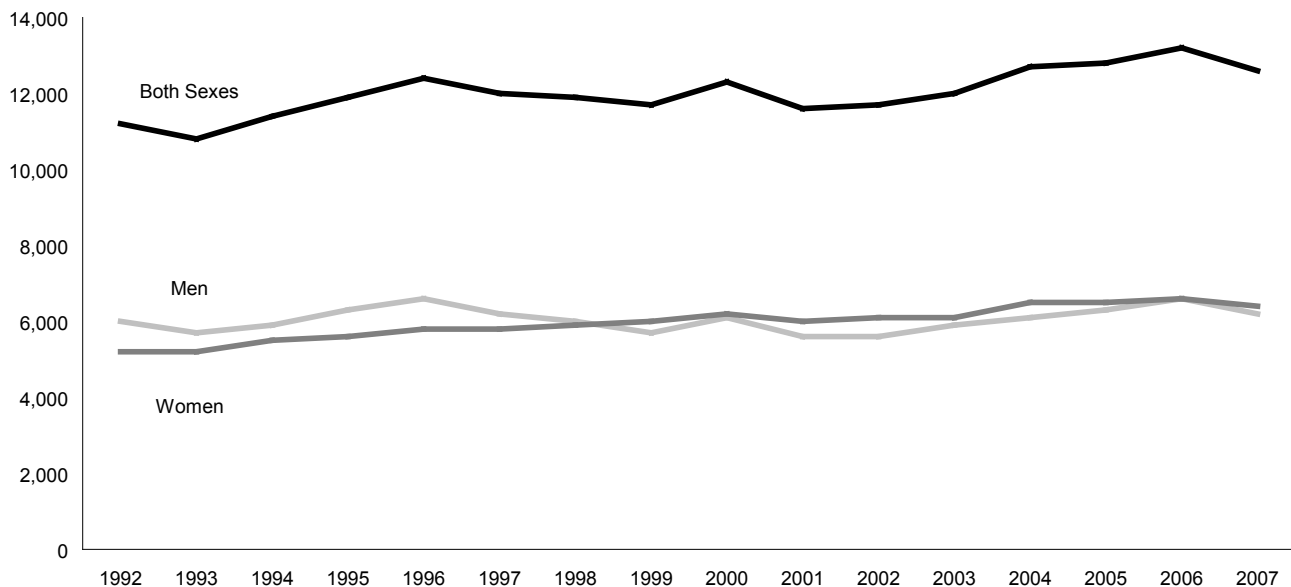
Yukon's Labour Force, Aged 25 and Over

		Labour Force			Employment			Unemployment		
		Both Sexes	Men	Women	Both Sexes	Men	Women	Both Sexes	Men	Women
2007	May	13,100	6,500	6,500	12,600	6,200	6,400	500	300	*
	Apr	13,000	6,500	6,500	12,600	6,200	6,400	400	300	*
	Mar	12,900	6,400	6,500	12,700	6,300	6,400	200	*	*
	Feb	13,100	6,400	6,700	12,900	6,300	6,600	200	*	*
	Jan	13,300	6,700	6,600	13,000	6,500	6,500	300	200	200
2006	Dec	13,200	6,600	6,600	13,000	6,500	6,500	300	200	*
	Nov	13,400	6,700	6,700	13,100	6,400	6,600	400	300	*
	Oct	13,400	6,800	6,700	13,000	6,400	6,600	400	300	*
	Sep	13,600	6,800	6,800	13,100	6,400	6,700	500	400	*
	Aug	13,500	6,800	6,700	13,000	6,500	6,500	500	400	200
	Jul	13,500	6,800	6,600	13,000	6,500	6,400	500	300	200
	Jun	13,600	6,900	6,700	13,200	6,600	6,500	500	200	200
	May	13,600	6,900	6,800	13,200	6,600	6,600	400	200	200
2005	May (r)	13,500	6,800	6,700	12,800	6,300	6,500	600	500	200
2004	May (r)	13,400	6,600	6,800	12,700	6,100	6,500	700	500	200
2003	May (r)	13,100	6,500	6,600	12,000	5,900	6,100	1,100	600	500
2002	May (r)	12,800	6,400	6,400	11,700	5,600	6,100	1,100	800	300
2001	May (r)	13,100	6,600	6,600	11,600	5,600	6,000	1,500	900	600
2000	May (r)	13,400	6,900	6,600	12,300	6,100	6,200	1,100	800	400
1999	May (r)	13,400	6,900	6,500	11,700	5,700	6,000	1,600	1,100	500
1998	May (r)	13,700	7,100	6,500	11,900	6,000	5,900	1,700	1,100	600
1997	May (r)	13,600	7,200	6,400	12,000	6,200	5,800	1,600	1,000	600
1996	May (r)	13,400	7,100	6,200	12,400	6,600	5,800	1,000	500	500
1995	May (r)	12,700	6,800	5,900	11,900	6,300	5,600	900	500	300
1994	May (r)	12,500	6,600	5,900	11,400	5,900	5,500	1,100	700	400
1993	May (r)	12,700	6,800	6,000	10,800	5,700	5,200	1,900	1,100	800
1992	May (r)	12,300	6,600	5,700	11,200	6,000	5,200	1,000	600	500
Average May 1992 to 2007		13,100	6,800	6,400	12,000	6,100	6,000	1,100	700	400

(r) revised

* Suppressed for confidentiality reasons (See explanation on page 11)

Number of Employed for May, 25 and over, 1992 to 2007

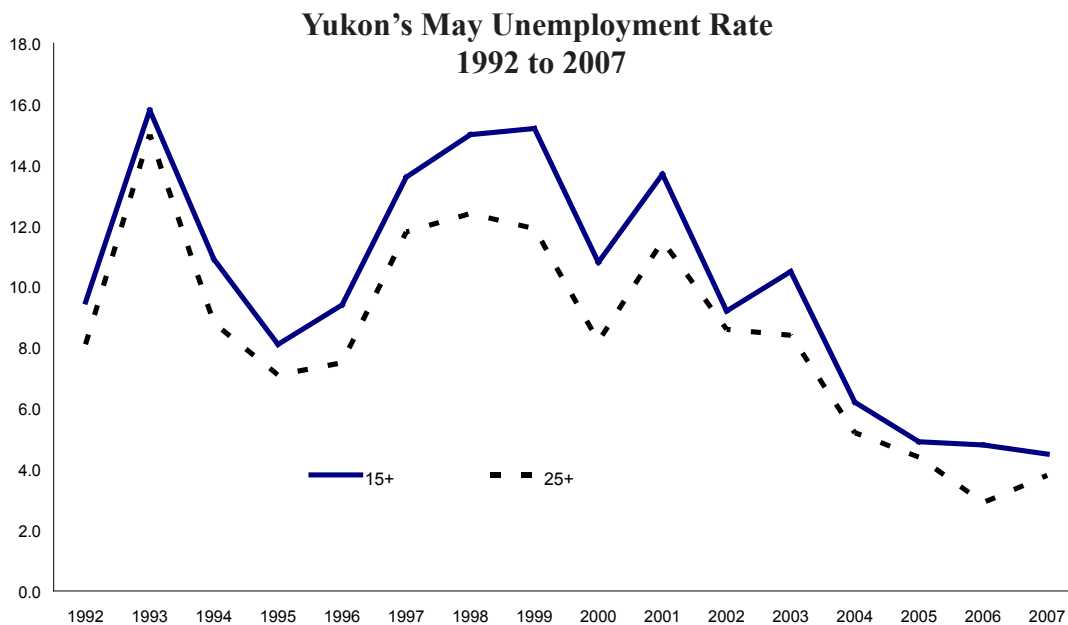


Yukon's Unemployment Rate

		15 years and older Unemployment Rate (%)			25 years and older Unemployment Rate (%)		
		Both Sexes	Men	Women	Both Sexes	Men	Women
2007	May	4.5	6.3	*	3.8	4.6	*
	Apr	3.9	6.3	*	3.1	4.6	*
	Mar	3.2	5.1	*	1.6	*	*
	Feb	3.2	3.8	*	1.5	*	*
	Jan	3.8	4.9	2.6	2.3	3.0	3.0
2006	Dec	2.5	3.7	*	2.3	3.0	*
	Nov	3.8	6.1	*	3.0	4.5	*
	Oct	4.4	7.3	*	3.0	4.4	*
	Sep	5.5	8.3	2.5	3.7	5.9	*
	Aug	5.5	7.1	3.8	3.7	5.9	3.0
	Jul	5.5	7.1	3.8	3.7	4.4	3.0
	Jun	5.5	5.9	3.8	3.7	2.9	3.0
	May	4.8	5.9	2.5	2.9	2.9	2.9
2005	May (r)	4.9	7.2	3.7	4.4	7.4	3.0
2004	May (r)	6.2	8.9	4.9	5.2	7.6	2.9
2003	May (r)	10.5	11.8	9.1	8.4	9.2	7.6
2002	May (r)	9.2	13.0	5.2	8.6	12.5	4.7
2001	May (r)	13.7	16.9	10.7	11.5	13.6	9.1
2000	May (r)	10.8	13.4	7.9	8.2	11.6	6.1
1999	May (r)	15.2	19.5	9.1	11.9	15.9	7.7
1998	May (r)	15.0	19.0	10.5	12.4	15.5	9.2
1997	May (r)	13.6	16.5	11.7	11.8	13.9	9.4
1996	May (r)	9.4	9.4	9.5	7.5	7.0	8.1
1995	May (r)	8.1	10.1	5.8	7.1	7.4	5.1
1994	May (r)	10.9	12.8	8.7	8.8	10.6	6.8
1993	May (r)	15.8	17.1	14.3	15.0	16.2	13.3
1992	May (r)	9.5	10.1	8.8	8.1	9.1	8.8
Average May 1992 to 2007		10.1	12.4	8.2	8.5	10.3	7.0

(r) revised

* Suppressed for confidentiality reasons (See explanation on page 11)



Yukon's Employment - *seasonally unadjusted figures*

A word about “adjusted” vs. “unadjusted”

The statistics on the next 5 pages are “seasonally unadjusted,” as opposed to the figures on pages 1 through 6, which are “seasonally adjusted.”

“Seasonally adjusted” refers to the technique of adjusting the “raw” figures to remove seasonal movements (*see page 12 for further explanation*). As such, “seasonally adjusted” employment figures are widely used and quoted, as they are considered to be a more accurate picture of the current employment situation than the “raw” or “unadjusted” figures.

Some of the variables mentioned in the next 5 pages are available only in the “unadjusted” format, while others are available both as “adjusted” and “unadjusted.” Comparisons between the “adjusted” and “unadjusted” series should not be made.

Yukon's Labour Force Characteristics (*unadjusted*)

		Labour Force	Employed	Unemployed	Not in Labour Force	Unemployment Rate	Participation Rate	Employment Rate
						----- % -----		
2007	May	15,300	14,500	800	6,000	5.2	71.8	68.1
	Apr	15,200	14,400	700	6,200	4.6	71.0	67.3
	Mar	15,100	14,400	700	6,300	4.6	70.6	67.3
	Feb	15,100	14,600	500	6,300	3.3	70.6	68.2
	Jan	15,400	14,700	700	6,000	4.5	71.6	68.4
2006	Dec	15,400	15,000	400	6,100	2.6	71.6	69.8
	Nov	15,700	15,100	600	5,900	3.8	73.0	70.2
	Oct	16,000	15,400	600	5,500	3.8	74.4	71.6
	Sep	16,900	16,100	800	4,700	4.7	78.6	74.9
	Aug	17,200	16,400	800	4,300	4.7	80.0	76.3
	Jul	17,200	16,300	900	4,300	5.2	80.0	75.8
	Jun	16,700	15,800	900	4,900	5.4	77.7	73.5
	May	16,400	15,600	800	5,100	4.9	76.3	72.6
2005	May	16,300	15,300	900	5,300	5.5	75.8	71.2
2004	May	16,000	14,900	1,100	5,200	6.9	75.5	70.3
2003	May	15,200	13,500	1,700	5,400	11.2	73.8	65.5
2002	May	15,100	13,600	1,500	4,800	9.9	75.5	68.0
2001	May	15,100	12,800	2,200	4,700	14.6	76.3	64.6
2000	May	15,500	13,700	1,800	4,400	11.6	77.9	68.8
1999	May	15,600	13,100	2,500	4,300	16.0	78.4	65.8
1998	May	15,700	13,200	2,500	4,300	15.9	78.5	66.0
1997	May	15,900	13,500	2,400	4,300	15.1	78.7	66.8
1996	May	15,600	13,900	1,600	4,000	10.3	80.0	71.3
1995	May	14,600	13,200	1,400	4,200	9.6	77.7	70.2
1994	May	14,500	12,700	1,800	4,000	12.4	78.4	68.6
1993	May	14,900	12,400	2,600	3,900	17.4	79.3	66.0
1992	May	14,400	12,900	1,600	4,000	11.1	77.8	69.7
Average May 1992 to 2007		15,400	13,700	1,700	4,600	11.1	77.0	68.3

Note: Due to rounding, the sum of individual LFS characteristics at times does not equal the labour force and/or total employment figures. Percentages have been adjusted on the basis of the reported unemployment rate. All figures quoted for the Yukon are three-month moving averages. For a definition of three-month moving average, please go to the list of definitions on page 12.

Full-time and Part-time Employment

		Total Employed	Full-time	% of all employed	Part-time	% of all employed
2007	May	14,500	12,100	83.4%	2,400	16.6%
	Apr	14,400	12,000	83.3%	2,400	16.7%
	Mar	14,400	12,300	85.4%	2,200	15.3%
	Feb	14,600	12,500	85.6%	2,000	13.7%
	Jan	14,700	12,600	85.7%	2,200	15.0%
2006	Dec	15,000	12,800	85.3%	2,200	14.7%
	Nov	15,100	12,700	84.1%	2,400	15.9%
	Oct	15,400	13,100	85.1%	2,300	14.9%
	Sep	16,100	14,100	87.6%	2,000	12.4%
	Aug	16,400	14,700	89.6%	1,800	11.0%
	Jul	16,300	14,500	89.0%	1,900	11.7%
	Jun	15,800	13,600	86.1%	2,200	13.9%
	May	15,600	13,100	84.0%	2,500	16.0%
2005	May	15,300	13,200	86.3%	2,100	13.7%
2004	May	14,900	12,400	83.2%	2,500	16.8%
2003	May	13,500	11,500	85.2%	2,000	14.8%
2002	May	13,600	10,800	79.4%	2,800	20.6%
2001	May	12,800	10,400	81.3%	2,500	19.5%
2000	May	13,700	10,700	78.1%	2,900	21.2%
1999	May	13,100	10,600	80.9%	2,500	19.1%
1998	May	13,200	10,900	82.6%	2,300	17.4%
1997	May	13,500	10,700	79.3%	2,800	20.7%
1996	May	13,900	11,700	84.2%	2,200	15.8%
1995	May	13,200	11,200	84.8%	2,000	15.2%
1994	May	12,700	10,700	84.3%	2,000	15.7%
1993	May	12,400	10,200	82.3%	2,100	16.9%
1992	May	12,900	10,800	83.7%	2,100	16.3%
Average May 1992 to 2007		13,700	11,300	82.5%	2,400	17.5%

Employment in Goods- and Service-Producing Industries

		Total Employed	Goods- Producing Industries	Service- Producing Industries			Total Employed	Goods- Producing Industries	Service- Producing Industries
2007	May	14,500	2,000	12,600	2005	May	15,300	1,800	13,600
	Apr	14,400	1,900	12,600		May	14,900	1,300	13,500
	Mar	14,400	1,900	12,600		May	13,500	1,400	12,100
	Feb	14,600	1,900	12,700		May	13,600	1,600	12,000
	Jan	14,700	1,900	12,800		May	12,800	1,500	11,300
2006	Dec	15,000	2,100	12,900	May	13,700	1,800	11,900	
	Nov	15,100	2,200	12,900	May	13,100	1,300	11,800	
	Oct	15,400	2,300	13,100	May	13,200	1,600	11,600	
	Sep	16,100	2,100	14,000	May	13,500	1,900	11,600	
	Aug	16,400	2,000	14,400	May	13,900	2,100	11,800	
	Jul	16,300	2,000	14,400	May	13,200	1,800	11,400	
	Jun	15,800	2,000	13,800	May	12,700	1,600	11,100	
	May	15,600	2,000	13,600	May	12,400	1,700	10,700	
					1992	May	12,900	1,900	10,900
Average May 1992 to 2007					Average May 1992 to 2007	13,700	1,700	12,000	

Public and Private Sector Employment

		Total Employed	Public Sector*		Private Sector	
			Employees	Employees	Self- Employed	Total Private Sector
2007	May	14,500	5,600	6,500	2,400	8,900
	Apr	14,400	5,500	6,500	2,400	8,900
	Mar	14,400	5,400	6,500	2,500	9,000
	Feb	14,600	5,400	6,500	2,600	9,100
	Jan	14,700	5,300	6,700	2,800	9,500
2006	Dec	15,000	5,400	6,900	2,700	9,600
	Nov	15,100	5,400	6,700	2,900	9,600
	Oct	15,400	5,500	7,100	2,900	10,000
	Sep	16,100	5,900	7,400	2,700	10,100
	Aug	16,400	6,200	7,600	2,600	10,200
	Jul	16,300	6,200	7,600	2,500	10,100
	Jun	15,800	6,000	7,400	2,400	9,800
	May	15,600	5,500	7,500	2,500	10,000
2005	May	15,300	5,800	6,800	2,700	9,500
2004	May	14,900	5,700	6,900	2,300	9,200
2003	May	13,500	5,300	5,900	2,300	8,200
2002	May	13,600	5,500	5,600	2,500	8,100
2001	May	12,800	5,500	4,700	2,600	7,300
2000	May	13,700	5,500	5,400	2,800	8,200
1999	May	13,100	5,600	4,900	2,600	7,500
1998	May	13,200	5,500	5,600	2,100	7,700
1997	May	13,500	5,100	6,300	2,200	8,500
1996	May	13,900	5,000	6,800	2,200	9,000
1995	May	13,200	4,700	6,300	2,200	8,500
1994	May	12,700	4,500	5,700	2,500	8,200
1993	May	12,400	4,500	6,000	1,900	7,900
1992	May	12,900	4,800	6,000	2,000	8,000
Average May 1992 to 2007		13,700	5,300	6,100	2,400	8,400

* includes Federal, Territorial, Municipal, and First Nation Band Office employment

Labour Force

		By age			By sex & age				% Change May 2006 to May 2007
		15+	15-24	25+	Men		Women		
					15+	25+	15+	25+	
2007	May	15,300	2,300	13,000	8,000	6,500	7,300	6,400	Both
	Apr	15,200	2,300	12,900	7,800	6,400	7,400	6,500	15+
	Mar	15,100	2,300	12,800	7,700	6,300	7,400	6,500	15-24
	Feb	15,100	2,300	12,800	7,600	6,200	7,500	6,600	25+
	Jan	15,400	2,400	13,100	7,900	6,500	7,600	6,600	
2006	Dec	15,400	2,300	13,100	7,900	6,500	7,500	6,600	Men
	Nov	15,700	2,300	13,400	8,000	6,700	7,600	6,600	15+
	Oct	16,000	2,500	13,500	8,300	6,900	7,800	6,700	25+
	Sep	16,900	3,000	13,900	8,700	7,000	8,200	6,900	
	Aug	17,200	3,400	13,800	8,900	7,000	8,300	6,800	
	Jul	17,200	3,500	13,700	8,900	6,900	8,300	6,800	
	Jun	16,700	3,000	13,700	8,600	7,000	8,000	6,700	Women
	May	16,400	2,800	13,600	8,400	6,900	8,000	6,800	15+
								25+	

Employed

		By age			By sex & age				% Change May 2006 to May 2007	
		15+	15-24	25+	Men		Women			
		15+	15-24	25+	15+	25+	15+	25+		
2007	May	14,500	2,100	12,400	7,300	6,100	7,200	6,300	Both	
	Apr	14,400	2,100	12,400	7,100	6,000	7,300	6,300	15+	-7.1%
	Mar	14,400	2,000	12,500	7,100	6,100	7,300	6,400	15-24	-16.0%
	Feb	14,600	2,000	12,600	7,200	6,100	7,400	6,500	25+	-5.3%
	Jan	14,700	2,100	12,700	7,400	6,300	7,400	6,400		
2006	Dec	15,000	2,200	12,800	7,600	6,300	7,400	6,500	Men	
	Nov	15,100	2,000	13,000	7,600	6,500	7,500	6,600	15+	-6.4%
	Oct	15,400	2,200	13,200	7,800	6,600	7,600	6,600	25+	-6.2%
	Sep	16,100	2,600	13,500	8,100	6,700	8,000	6,800		
	Aug	16,400	3,000	13,400	8,400	6,800	8,100	6,600	Women	
	Jul	16,300	3,100	13,300	8,300	6,700	8,000	6,500	15+	-6.5%
	Jun	15,800	2,600	13,200	8,100	6,700	7,700	6,500	25+	-4.5%
	May	15,600	2,500	13,100	7,800	6,500	7,700	6,600		

Participation Rate

Change (% points) May 2006 to May 2007		By age			By sex & age						
		15+	15-24	25+	Men		Women				
		15+	15-24	25+	15+	25+	15+	25+			
		-----%-----			-----%-----						
Both	15+	-4.5			71.8	56.1	75.1	75.5	77.4	68.2	72.7
	15-24	-10.6			71.0	56.1	74.6	73.6	76.2	68.5	73.0
	25+	-3.5			70.6	56.1	74.0	72.6	75.0	68.5	73.0
					70.6	56.1	74.0	71.0	73.8	69.4	74.2
					71.6	57.1	75.7	73.8	77.4	70.4	74.2
Men	15+	-3.0			71.6	54.8	75.7	73.8	77.4	69.4	74.2
	25+	-4.7			73.0	54.8	77.5	74.8	78.8	70.4	74.2
					74.4	59.5	78.0	77.6	81.2	72.2	75.3
					78.6	71.4	80.3	81.3	82.4	75.9	77.5
					80.0	81.0	79.8	83.2	83.3	76.9	76.4
					80.0	83.3	79.2	83.2	82.1	76.9	76.4
					77.7	71.4	79.2	80.4	83.3	73.4	75.3
					76.3	66.7	78.6	78.5	82.1	73.4	76.4
Women	15+	-5.2									
	25+	-3.7									

Employment Rate

		By age			By sex & age				Change (% points) May 2006 to May 2007	
		15+	15-24	25+	Men		Women			
		15+	15-24	25+	15+	25+	15+	25+		
		-----%-----			-----%-----					
2007	May	68.1	51.2	71.7	68.9	72.6	67.3	71.6	Both	
	Apr	67.3	51.2	71.7	67.0	71.4	67.6	70.8	15+	-4.5
	Mar	67.3	48.8	72.3	67.0	72.6	67.6	71.9	15-24	-8.3
	Feb	68.2	48.8	72.8	67.3	72.6	68.5	73.0	25+	-4.0
	Jan	68.4	50.0	73.4	69.2	75.0	68.5	71.9		
2006	Dec	69.8	52.4	74.0	71.0	75.0	68.5	73.0	Men	
	Nov	70.2	47.6	75.1	71.0	76.5	69.4	74.2	15+	-4.0
	Oct	71.6	52.4	76.3	72.9	77.6	70.4	74.2	25+	-4.8
	Sep	74.9	61.9	78.0	75.7	78.8	74.1	76.4		
	Aug	76.3	71.4	77.5	78.5	81.0	75.0	74.2	Women	
	Jul	75.8	73.8	76.9	77.6	79.8	74.1	73.0	15+	-3.3
	Jun	73.5	61.9	76.3	75.7	79.8	70.6	73.0	25+	-2.6
	May	72.6	59.5	75.7	72.9	77.4	70.6	74.2		

Where the numbers come from

Every month Statistics Canada surveyors in each province and territory of Canada interview a representative sample of individuals 15 years of age and older. The surveyors ask these individuals if they were working, or were looking and available for work, during the “reference week” (usually the 3rd week of the month). Individuals are counted as employed if:

- they worked for at least 1 hour during the reference week (“work” includes self-employment).

Individuals are counted as unemployed if:

- they were without work but had looked for work in the past 4 weeks;
- they had been laid off but were not looking for work because they expected to return to their original work;
- they were not looking for work because they had a new job starting within 4 weeks.

If someone is neither employed nor unemployed they are then defined as not in the labour force and therefore not counted in the unemployment rate. However, they are still considered to be part of the working-age population.

The survey described above is called the Labour Force Survey (LFS). The Yukon has been included in the LFS since January 1992. However, the national rates for Canada do not include any of the territories.

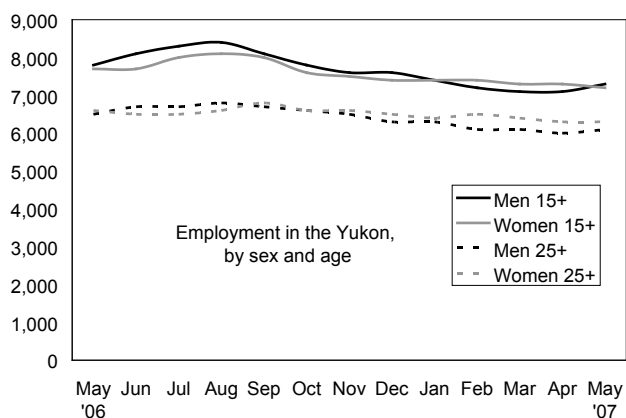
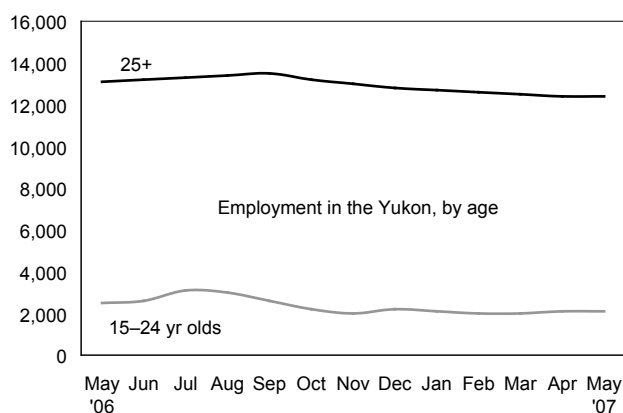
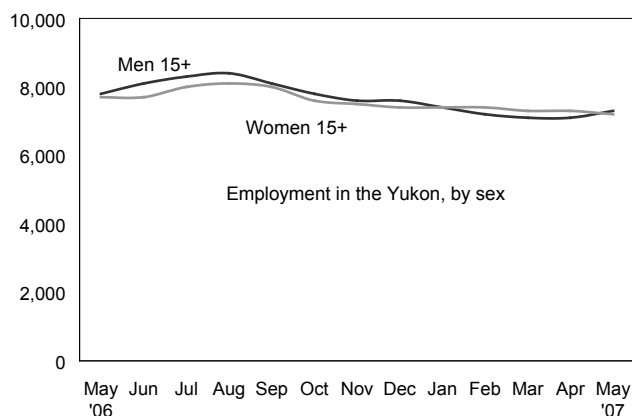
The objectives of the LFS are to divide the working-age population into three mutually exclusive classifications – employed, unemployed and not in the labour force – and to provide descriptive and explanatory data on each of these categories.

The LFS is the only source of monthly estimates of total employment including the self-employed, full- and part-time employment, and unemployment. It publishes monthly standard labour market indicators such as the unemployment rate, the employment rate and the participation rate. The LFS is a major source of information on the personal characteristics of the working-age population, including age, sex, marital status, educational attainment, and family characteristics.

In the Yukon the LFS sample is designed to represent approximately 92% of the working-age population (Yukoners 15 years of age and older). Yukoners living in unorganized areas, full-time members of the armed forces and people living in institutions are not represented in the sample.

As a “household-based” survey, the LFS counts individuals as part of the labour force in the province or territory their home is in. Therefore, if an individual is working outside of the Yukon, in the NWT for instance, but still has their home in the Yukon, they are counted in the Yukon’s labour force.

Suppression of Data. For the Labour Force Survey in the Yukon, Statistics Canada suppresses any figure that is below 200 for confidentiality reasons in order to ensure the confidentiality of each individual respondent to the survey. In turn, percentages (i.e. employment or unemployment rates) based on suppressed numbers will also be suppressed.



Definitions:

1. Employment

Employed persons are those who, during the reference week, did any work for pay or profit, or had a job and were absent from work.

2. Employment rate

Also referred to as “employment/population ratio,” it is the number of employed persons expressed as a percentage of the population aged 15 years and over. The employment rate for a particular group (for example, women aged 25 years and over) is the number employed in that group expressed as a percentage of the population for that group.

3. Goods-Producing Industries

Goods-Producing Industries (or goods sector, or goods industries): includes agriculture, other primary industries (forestry; fishing and trapping; mines, quarries and oil wells), manufacturing, construction and utilities (electric power, gas and water).

4. Labour force

The labour force is the civilian non-institutional population 15 years of age and over who, during the survey reference week, were employed or unemployed.

5. Not in the labour force

Persons not in the labour force are those who, during the reference week, were unwilling or unable to offer or supply labour services under conditions existing in their labour markets; that is, they were neither employed nor unemployed.

6. Participation rate

The participation rate is the total labour force expressed as a percentage of the population aged 15 years and over. The participation rate for a particular group (for example, women aged 25 years and over) is the labour force in that group expressed as a percentage of the population for that group.

7. Reference Week

The reference week is the entire calendar week (from Sunday to Saturday) covered by the Labour Force Survey each month. It is usually the week containing the 15th day of the month. The interviews are conducted during the following week, called the Survey Week, and the labour force status determined is that of the reference week.

8. Seasonal adjustment

Fluctuations in economic time series are caused by seasonal, cyclical and irregular movements. A seasonally adjusted series is one from which seasonal movements have been eliminated. Seasonal movements are defined as those that are caused by regular annual events such as climate, holidays, vacation periods and cycles related to crops, production and retail sales associated with Christmas and Easter. It should be noted that the seasonally adjusted series contain irregular as well as longer-term cyclical fluctuations.

9. Self-employed

There are two broad categories of workers: those who work for others and those who work for themselves, namely, the self-employed. The self-employed includes working owners of incorporated businesses, working owners of unincorporated businesses and other self-employed.

10. Service-Producing Industries

Service-Producing Industries (or service sector, or service industries): includes trade; transportation and warehousing; finance, insurance, real estate and leasing; professional, scientific and technical services; management, administrative and other support; educational services; health care and social assistance; information, culture and recreation; accommodation and food services; other services; and public administration.

11. Three-Month Moving Average

All monthly figures for the Territories, whether seasonally adjusted or unadjusted, are three-month moving averages – for example, the March 2004 unemployment rate of 6.0% is actually an average of the unemployment rates for the months of January, February and March. April's unemployment rate will become the average of the rates for February, March and April.

12. Unemployment

Unemployed persons are those who, during the reference week, were available for work and were either on temporary layoff, had looked for work in the past four weeks, or had a job to start within the next four weeks.

13. Unemployment rate

The unemployment rate is the number of unemployed persons expressed as a percentage of the labour force. The unemployment rate for a particular group (age, sex, marital status, etc.) is the number unemployed in that group expressed as a percentage of the labour force for that group.

Information sheet no. 34.181–June '07
Next release date: July 9th, 2007