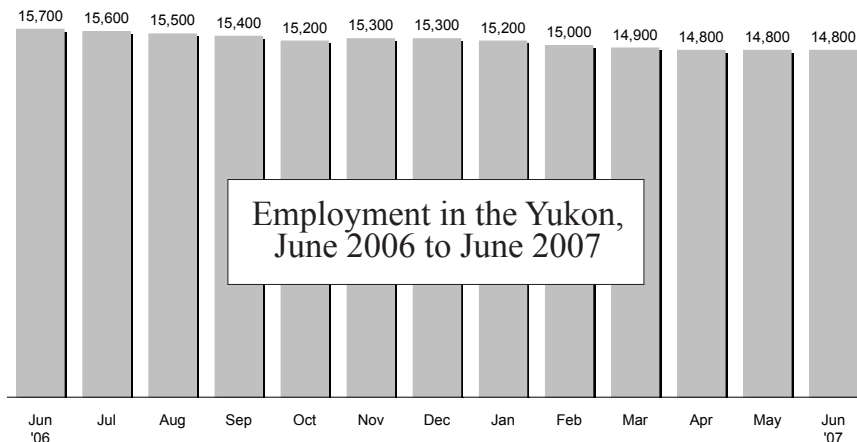


# YUKON BUREAU OF STATISTICS

2 ÷ 9 # 1 \$ > 0 - 2 + 6 & ± 7 < 3 π 7 4 5 + 9 ≈ 1 ∞ ^

## Yukon Employment June 2007



Yukon's labour force decreased by 900 from June 2006 (16,500) to June 2007 (15,600). Of the June 2007 figure, 14,800 or 94.9% were employed and 800 or 5.1% were unemployed. One year ago, in June 2006, there were 16,500 individuals in the labour force of whom 15,700 or 94.5% were employed and 900 or 5.5% were unemployed.

### June 2007 Employment at a glance:

• Labour force:	15,600
• Employment:	14,800
• Unemployment:	800
• Unemployment rate:	5.1%
-Last month	4.5%
-One year ago	5.5%

### What's inside:

#### Seasonally Adjusted Figures

Employment.....	1
Canada/provinces.....	1
Unemployment rate .....	2
Canada/provinces.....	3
15+ Labour Force .....	3
25+ Labour Force .....	5
Unemployment rate .....	6

#### Seasonally Unadjusted Figures

Labour Force Characteristics .....	7
Full-/Part-time employment .....	8
Goods-/Service-producing sectors ..	9
Public/Private sector employment ..	9
By sex & age:.....	9
Labour force.....	9
Employed.....	10
Participation rate.....	10
Employment rate.....	10
Where the numbers come from....	11

#### Definitions.....

12

**PLEASE NOTE:** Due to rounding, the sum of individual Labour Force Survey characteristics at times does not equal the labour force and/or total employment figures. Percentages have been adjusted on the basis of the reported unemployment rate. All figures quoted for the Yukon are three-month moving averages. For a definition of three-month moving average, please go to the list of definitions on page 12.

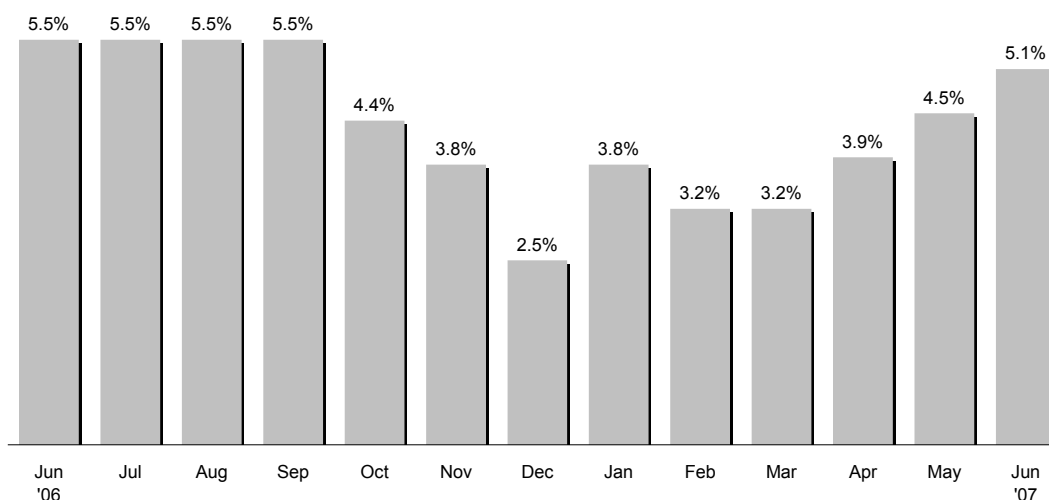
### Figures From Across Canada—June 2007

	Number Employed	Number Unemployed	Unemployment Rate
<b>Yukon</b>	<b>14,800</b>	<b>800</b>	<b>5.1%</b>
Canada	16,837,300	1,086,500	6.1%
Newfoundland & Labrador	215,500	32,500	13.1%
P.E.I.	69,100	8,100	10.5%
Nova Scotia	445,800	39,300	8.1%
New Brunswick	365,400	26,800	6.8%
Quebec	3,858,900	286,300	6.9%
Ontario	6,573,300	459,900	6.5%
Manitoba	596,800	28,900	4.6%
Saskatchewan	497,100	23,000	4.4%
Alberta	1,955,300	76,800	3.8%
B.C.	2,260,100	104,900	4.4%

This table shows that Yukon ranks fifth in the country in terms of the unemployment rate (5.1%). Alberta's unemployment rate (3.8%) was lowest, while Newfoundland's rate (13.1%) was highest.

**Note:** the NWT's figure of 6.6% and Nunavut's (10 largest communities) figure of 10.7% are available only as "unadjusted" estimates and therefore are not included in this table of seasonally adjusted data. They also, along with Yukon figures, are three-month moving averages, and therefore not included in the overall figure for Canada.

## Yukon's Unemployment Rate



The unemployment rate remained relatively low over the past year. The following changes have occurred on a month to month basis:

	Percentage points*
2006	
• May to June	0.7
• June to July	0.0
• July to August	0.0
• August to September	0.0
• September to October	-1.1
• October to November	-0.6
• November to December	-1.3
• Dec. '06 to January '07	1.3
2007	
• January to February	-0.6
• February to March	0.0
• March to April	0.7
• April to May	0.6
• May to June	0.6

\* percentage point is the actual numerical difference between two percentages, such as: 10% - 8% = 2 percentage points.

### What is the unemployment rate, and how is it calculated?

The unemployment rate shows the relationship between the number of unemployed and the labour force. The labour force includes those individuals 15 years of age and older who are either employed or unemployed but looking for work. The higher the value of the unemployment rate, the greater the number of individuals unemployed as compared to the labour force.

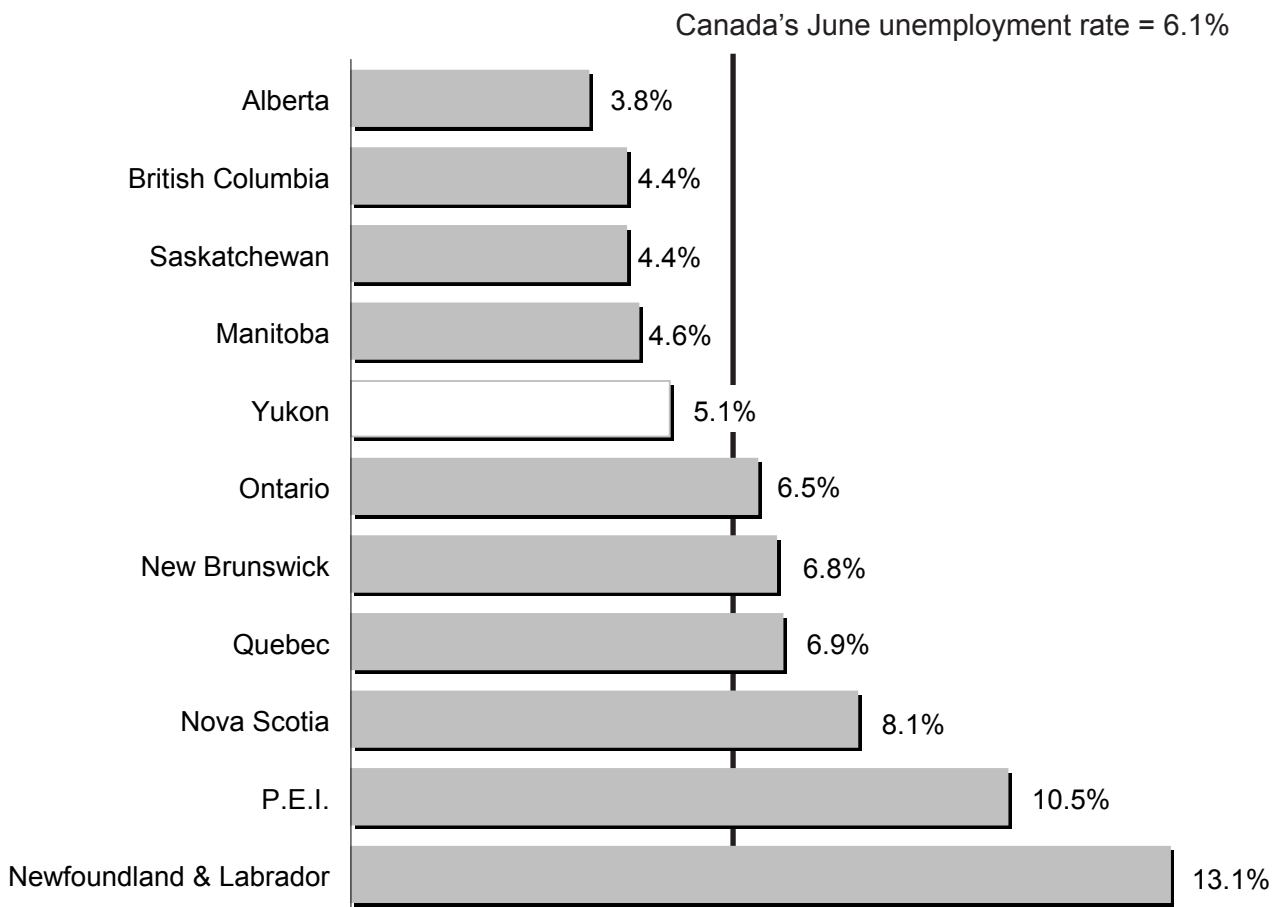
The survey that estimates the Yukon's unemployment rate, the Labour Force Survey, or LFS, has been in operation in the Yukon since January 1992.

Over the last 16 years the average unemployment rate for June has been 10.5%.

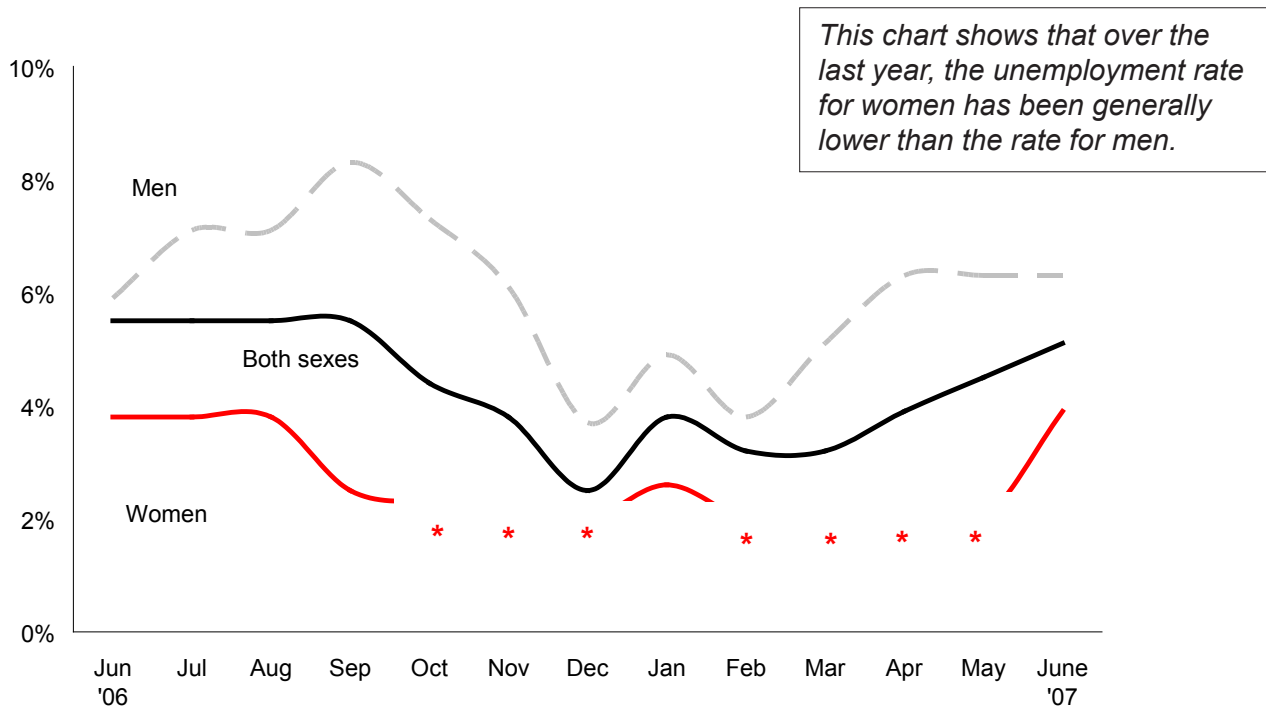
Looking at the change in the unemployment rate between May and June in previous years, since 1992 the rate has fallen 4 times, risen 11 times, and stayed the same once.

	May	June	Change
2007	4.5%	5.1%	0.6%
2006	4.8%	5.5%	0.7%
2005	4.9%	6.0%	1.1%
2004	6.2%	6.7%	0.5%
2003	10.5%	11.0%	0.5%
2002	9.2%	9.7%	0.5%
2001	13.7%	14.3%	0.6%
2000	10.8%	11.5%	0.7%
1999	15.2%	14.5%	-0.7%
1998	15.0%	14.4%	-0.6%
1997	13.6%	13.6%	0.0%
1996	9.4%	9.3%	-0.1%
1995	8.1%	10.0%	1.9%
1994	10.9%	11.0%	0.1%
1993	15.8%	15.3%	-0.5%
1992	9.5%	10.8%	1.3%
<b>Average 1992 to 2007</b>	<b>10.1%</b>	<b>10.5%</b>	<b>0.4%</b>

**Unemployment rates: Canada, Provinces and Yukon — June 2007**



**Monthly Unemployment Rates for the Yukon Labour Force Aged 15 and Over**



\* Suppressed for confidentiality reasons (See explanation on page 11)

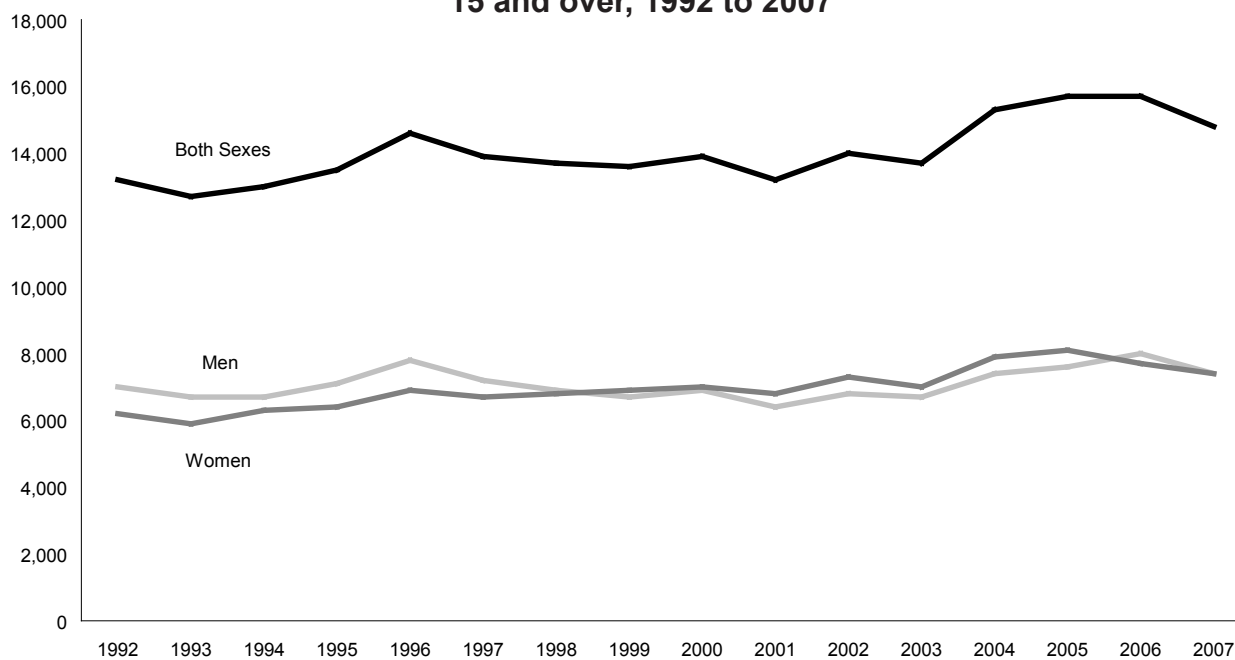
## Yukon's Labour Force Aged 15 and Over Continued. . .

		Labour Force			Employment			Unemployment		
		Both	Men	Women	Both	Men	Women	Both	Men	Women
		Sexes			Sexes			Sexes		
2007	Jun	15,600	7,900	7,700	14,800	7,400	7,400	800	500	300
	May	15,400	8,000	7,500	14,800	7,500	7,300	700	500	*
	Apr	15,400	7,900	7,500	14,800	7,400	7,400	600	500	*
	Mar	15,400	7,900	7,500	14,900	7,400	7,400	500	400	*
	Feb	15,500	7,800	7,600	15,000	7,500	7,500	500	300	*
	Jan	15,800	8,100	7,700	15,200	7,700	7,500	600	400	200
2006	Dec	15,700	8,100	7,600	15,300	7,800	7,500	400	300	*
	Nov	15,900	8,200	7,700	15,300	7,700	7,600	600	500	*
	Oct	15,900	8,200	7,700	15,200	7,600	7,600	700	600	*
	Sep	16,300	8,400	7,900	15,400	7,600	7,700	900	700	200
	Aug	16,300	8,400	7,900	15,500	7,800	7,700	900	600	300
	Jul	16,500	8,500	8,000	15,600	7,900	7,700	900	600	300
	Jun	16,500	8,500	8,000	15,700	8,000	7,700	900	500	300
2005	Jun (r)	16,700	8,300	8,400	15,700	7,600	8,100	1,000	700	300
2004	Jun (r)	16,500	8,100	8,400	15,300	7,400	7,900	1,100	700	400
2003	Jun (r)	15,400	7,700	7,700	13,700	6,700	7,000	1,700	1,000	700
2002	Jun (r)	15,500	7,700	7,800	14,000	6,800	7,300	1,500	1,000	600
2001	Jun (r)	15,400	7,800	7,600	13,200	6,400	6,800	2,200	1,400	800
2000	Jun (r)	15,700	8,100	7,600	13,900	6,900	7,000	1,800	1,200	600
1999	Jun (r)	15,900	8,200	7,700	13,600	6,700	6,900	2,300	1,500	700
1998	Jun (r)	16,000	8,400	7,600	13,700	6,900	6,800	2,300	1,500	800
1997	Jun (r)	16,200	8,600	7,500	13,900	7,200	6,700	2,200	1,400	800
1996	Jun (r)	16,100	8,500	7,600	14,600	7,800	6,900	1,500	700	800
1995	Jun (r)	15,000	8,000	7,000	13,500	7,100	6,400	1,500	900	600
1994	Jun (r)	14,600	7,700	6,900	13,000	6,700	6,300	1,600	1,000	600
1993	Jun (r)	15,000	8,000	7,000	12,700	6,700	5,900	2,300	1,300	1,100
1992	Jun (r)	14,800	8,000	6,800	13,200	7,000	6,200	1,600	1,000	600
<b>Average June 1992 to 2007</b>		<b>15,700</b>	<b>8,100</b>	<b>7,600</b>	<b>14,000</b>	<b>7,100</b>	<b>7,000</b>	<b>1,600</b>	<b>1,000</b>	<b>600</b>

(r) revised

\* Suppressed for confidentiality reasons (See explanation on page 11)

### Number of Employed for June, 15 and over, 1992 to 2007



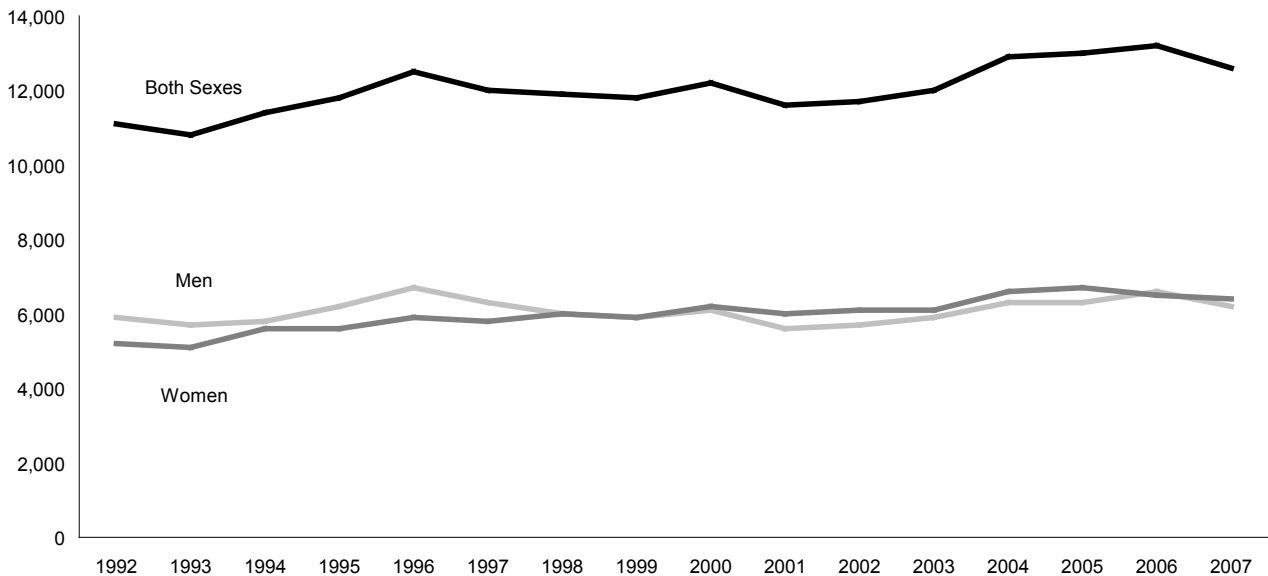
## Yukon's Labour Force, Aged 25 and Over

		Labour Force			Employment			Unemployment		
		Both Sexes	Men	Women	Both Sexes	Men	Women	Both Sexes	Men	Women
2007	Jun	13,200	6,600	6,600	12,600	6,200	6,400	500	400	200
	May	13,100	6,500	6,500	12,600	6,200	6,400	500	300	*
	Apr	13,000	6,500	6,500	12,600	6,200	6,400	400	300	*
	Mar	12,900	6,400	6,500	12,700	6,300	6,400	200	*	*
	Feb	13,100	6,400	6,700	12,900	6,300	6,600	200	*	*
	Jan	13,300	6,700	6,600	13,000	6,500	6,500	300	200	200
2006	Dec	13,200	6,600	6,600	13,000	6,500	6,500	300	200	*
	Nov	13,400	6,700	6,700	13,100	6,400	6,600	400	300	*
	Oct	13,400	6,800	6,700	13,000	6,400	6,600	400	300	*
	Sep	13,600	6,800	6,800	13,100	6,400	6,700	500	400	*
	Aug	13,500	6,800	6,700	13,000	6,500	6,500	500	400	200
	Jul	13,500	6,800	6,600	13,000	6,500	6,400	500	300	200
	Jun	13,600	6,900	6,700	13,200	6,600	6,500	500	200	200
2005	Jun (r)	13,600	6,700	6,900	13,000	6,300	6,700	700	500	200
2004	Jun (r)	13,600	6,800	6,900	12,900	6,300	6,600	700	500	300
2003	Jun (r)	13,000	6,500	6,600	12,000	5,900	6,100	1,100	600	400
2002	Jun (r)	12,900	6,400	6,500	11,700	5,700	6,100	1,100	700	400
2001	Jun (r)	13,100	6,600	6,500	11,600	5,600	6,000	1,500	1,000	500
2000	Jun (r)	13,400	6,900	6,500	12,200	6,100	6,200	1,100	800	300
1999	Jun (r)	13,400	6,900	6,500	11,800	5,900	5,900	1,500	1,000	500
1998	Jun (r)	13,600	7,100	6,500	11,900	6,000	6,000	1,700	1,100	600
1997	Jun (r)	13,600	7,300	6,300	12,000	6,300	5,800	1,600	1,000	600
1996	Jun (r)	13,500	7,100	6,400	12,500	6,700	5,900	1,000	400	500
1995	Jun (r)	12,800	6,900	6,000	11,800	6,200	5,600	1,000	600	400
1994	Jun (r)	12,500	6,500	6,000	11,400	5,800	5,600	1,100	700	400
1993	Jun (r)	12,500	6,600	5,900	10,800	5,700	5,100	1,700	900	800
1992	Jun (r)	12,200	6,500	5,600	11,100	5,900	5,200	1,100	600	400
<b>Average June 1992 to 2007</b>		<b>13,200</b>	<b>6,800</b>	<b>6,400</b>	<b>12,000</b>	<b>6,100</b>	<b>6,000</b>	<b>1,100</b>	<b>700</b>	<b>400</b>

(r) revised

\* Suppressed for confidentiality reasons (See explanation on page 11)

### Number of Employed for June, 25 and over, 1992 to 2007

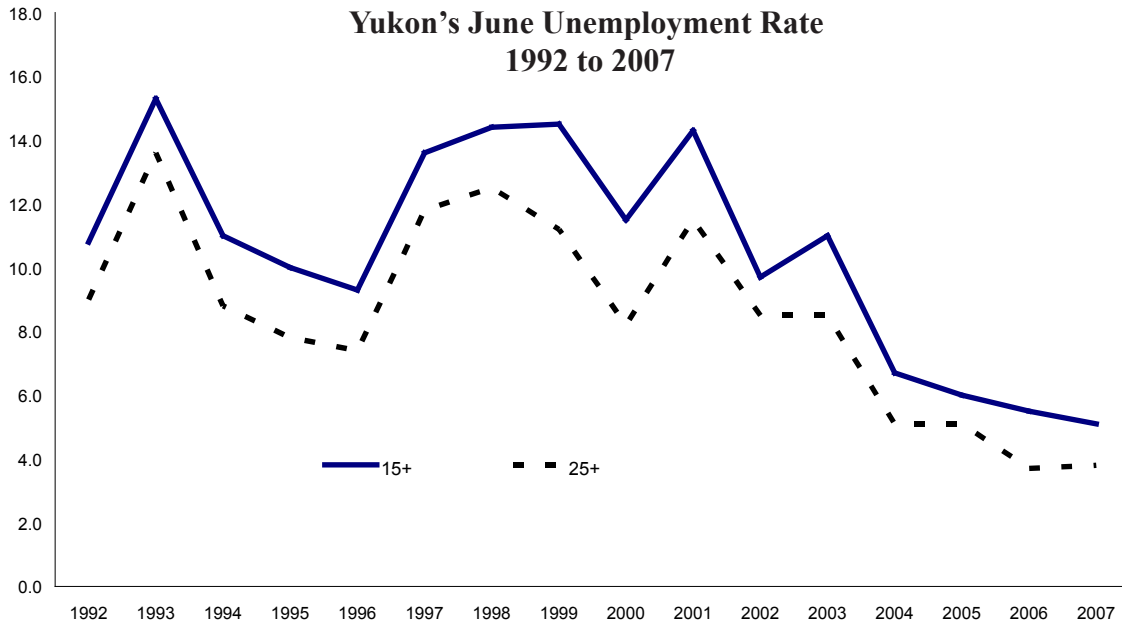


# Yukon's Unemployment Rate

		15 years and older Unemployment Rate (%)			25 years and older Unemployment Rate (%)		
		Both Sexes	Men	Women	Both Sexes	Men	Women
2007	Jun	5.1	6.3	3.9	3.8	6.1	3.0
	May	4.5	6.3	*	3.8	4.6	*
	Apr	3.9	6.3	*	3.1	4.6	*
	Mar	3.2	5.1	*	1.6	*	*
	Feb	3.2	3.8	*	1.5	*	*
	Jan	3.8	4.9	2.6	2.3	3.0	3.0
2006	Dec	2.5	3.7	*	2.3	3.0	*
	Nov	3.8	6.1	*	3.0	4.5	*
	Oct	4.4	7.3	*	3.0	4.4	*
	Sep	5.5	8.3	2.5	3.7	5.9	*
	Aug	5.5	7.1	3.8	3.7	5.9	3.0
	Jul	5.5	7.1	3.8	3.7	4.4	3.0
	Jun	5.5	5.9	3.8	3.7	2.9	3.0
2005	Jun (r)	6.0	8.4	3.6	5.1	7.5	2.9
2004	Jun (r)	6.7	8.6	4.8	5.1	7.4	4.3
2003	Jun (r)	11.0	13.0	9.1	8.5	9.2	6.1
2002	Jun (r)	9.7	13.0	7.7	8.5	10.9	6.2
2001	Jun (r)	14.3	17.9	10.5	11.5	15.2	7.7
2000	Jun (r)	11.5	14.8	7.9	8.2	11.6	4.6
1999	Jun (r)	14.5	18.3	9.1	11.2	14.5	7.7
1998	Jun (r)	14.4	17.9	10.5	12.5	15.5	9.2
1997	Jun (r)	13.6	16.3	10.7	11.8	13.7	9.5
1996	Jun (r)	9.3	8.2	10.5	7.4	5.6	7.8
1995	Jun (r)	10.0	11.3	8.6	7.8	8.7	6.7
1994	Jun (r)	11.0	13.0	8.7	8.8	10.8	6.7
1993	Jun (r)	15.3	16.3	15.7	13.6	13.6	13.6
1992	Jun (r)	10.8	12.5	8.8	9.0	9.2	7.1
<b>Average June 1992 to 2007</b>		<b>10.5</b>	<b>12.6</b>	<b>8.4</b>	<b>8.5</b>	<b>10.2</b>	<b>6.6</b>

(r) revised

\* Suppressed for confidentiality reasons (See explanation on page 11)



## Yukon's Employment - *seasonally unadjusted figures*

### A word about “adjusted” vs. “unadjusted”

The statistics on the next 5 pages are “seasonally unadjusted,” as opposed to the figures on pages 1 through 6, which are “seasonally adjusted.”

“Seasonally adjusted” refers to the technique of adjusting the “raw” figures to remove seasonal movements (*see page 12 for further explanation*). As such, “seasonally adjusted” employment figures are widely used and quoted, as they are considered to be a more accurate picture of the current employment situation than the “raw” or “unadjusted” figures.

Some of the variables mentioned in the next 5 pages are available only in the “unadjusted” format, while others are available both as “adjusted” and “unadjusted.” Comparisons between the “adjusted” and “unadjusted” series should not be made.

### Yukon's Labour Force Characteristics (*unadjusted*)

		Labour Force			Not in Labour Force	Unemployment Rate	Participation Rate	Employment Rate
		Employed	Unemployed			----- % -----		
2007	Jun	15,800	14,900	800	5,500	5.1	74.2	70.0
	May	15,300	14,500	800	6,000	5.2	71.8	68.1
	Apr	15,200	14,400	700	6,200	4.6	71.0	67.3
	Mar	15,100	14,400	700	6,300	4.6	70.6	67.3
	Feb	15,100	14,600	500	6,300	3.3	70.6	68.2
	Jan	15,400	14,700	700	6,000	4.5	71.6	68.4
2006	Dec	15,400	15,000	400	6,100	2.6	71.6	69.8
	Nov	15,700	15,100	600	5,900	3.8	73.0	70.2
	Oct	16,000	15,400	600	5,500	3.8	74.4	71.6
	Sep	16,900	16,100	800	4,700	4.7	78.6	74.9
	Aug	17,200	16,400	800	4,300	4.7	80.0	76.3
	Jul	17,200	16,300	900	4,300	5.2	80.0	75.8
	Jun	16,700	15,800	900	4,900	5.4	77.7	73.5
2005	Jun	16,800	15,800	1,000	4,700	6.0	78.1	73.5
2004	Jun	16,600	15,400	1,100	4,700	6.6	77.9	72.3
2003	Jun	15,500	13,800	1,800	5,100	11.6	74.9	66.7
2002	Jun	15,600	14,000	1,500	4,400	9.6	78.0	70.0
2001	Jun	15,500	13,200	2,200	4,400	14.2	78.3	66.7
2000	Jun	15,800	13,900	1,900	4,100	12.0	79.4	69.8
1999	Jun	16,000	13,700	2,300	3,900	14.4	80.4	68.8
1998	Jun	16,200	13,800	2,400	3,900	14.8	81.0	69.0
1997	Jun	16,400	14,000	2,300	3,900	14.0	80.8	69.0
1996	Jun	16,300	14,700	1,600	3,400	9.8	82.7	74.6
1995	Jun	15,200	13,600	1,600	3,600	10.5	80.4	72.0
1994	Jun	14,800	13,100	1,700	3,600	11.5	80.0	70.8
1993	Jun	15,200	12,800	2,400	3,600	15.8	80.4	67.7
1992	Jun	15,000	13,300	1,700	3,600	11.3	80.6	71.5
<b>Average June 1992 to 2007</b>		<b>15,800</b>	<b>14,100</b>	<b>1,700</b>	<b>4,200</b>	<b>10.8</b>	<b>79.1</b>	<b>70.4</b>

*Note: Due to rounding, the sum of individual LFS characteristics at times does not equal the labour force and/or total employment figures. Percentages have been adjusted on the basis of the reported unemployment rate. All figures quoted for the Yukon are three-month moving averages. For a definition of three-month moving average, please go to the list of definitions on page 12.*

### Full-time and Part-time Employment

		<b>Total Employed</b>	<b>Full-time</b>	<b>% of all employed</b>	<b>Part-time</b>	<b>% of all employed</b>
2007	Jun	14,900	12,400	83.2%	2,500	16.8%
	May	14,500	12,100	83.4%	2,400	16.6%
	Apr	14,400	12,000	83.3%	2,400	16.7%
	Mar	14,400	12,300	85.4%	2,200	15.3%
	Feb	14,600	12,500	85.6%	2,000	13.7%
	Jan	14,700	12,600	85.7%	2,200	15.0%
2006	Dec	15,000	12,800	85.3%	2,200	14.7%
	Nov	15,100	12,700	84.1%	2,400	15.9%
	Oct	15,400	13,100	85.1%	2,300	14.9%
	Sep	16,100	14,100	87.6%	2,000	12.4%
	Aug	16,400	14,700	89.6%	1,800	11.0%
	Jul	16,300	14,500	89.0%	1,900	11.7%
Jun	15,800	13,600	86.1%	2,200	13.9%	
2005	Jun	15,800	13,600	86.1%	2,200	13.9%
2004	Jun	15,400	13,000	84.4%	2,400	15.6%
2003	Jun	13,800	11,700	84.8%	2,000	14.5%
2002	Jun	14,000	11,300	80.7%	2,700	19.3%
2001	Jun	13,200	10,700	81.1%	2,600	19.7%
2000	Jun	13,900	11,300	81.3%	2,700	19.4%
1999	Jun	13,700	11,200	81.8%	2,400	17.5%
1998	Jun	13,800	11,600	84.1%	2,200	15.9%
1997	Jun	14,000	11,300	80.7%	2,700	19.3%
1996	Jun	14,700	12,600	85.7%	2,200	15.0%
1995	Jun	13,600	11,700	86.0%	1,900	14.0%
1994	Jun	13,100	11,100	84.7%	2,000	15.3%
1993	Jun	12,800	11,000	85.9%	1,900	14.8%
1992	Jun	13,300	11,200	84.2%	2,100	15.8%
<b>Average June 1992 to 2007</b>		<b>14,100</b>	<b>11,800</b>	<b>83.7%</b>	<b>2,300</b>	<b>16.3%</b>

### Employment in Goods- and Service-Producing Industries

		<b>Total Employed</b>	<b>Goods- Producing Industries</b>	<b>Service- Producing Industries</b>			<b>Total Employed</b>	<b>Goods- Producing Industries</b>	<b>Service- Producing Industries</b>
2007	Jun	14,900	2,200	12,700	2005	Jun	15,800	1,800	14,000
	May	14,500	2,000	12,600		Jun	15,400	1,600	13,800
	Apr	14,400	1,900	12,600		Jun	13,800	1,400	12,400
	Mar	14,400	1,900	12,600		Jun	14,000	1,800	12,300
	Feb	14,600	1,900	12,700		Jun	13,200	1,700	11,600
	Jan	14,700	1,900	12,800		Jun	13,900	2,000	12,000
2006	Dec	15,000	2,100	12,900	Jun	13,700	1,600	12,100	
	Nov	15,100	2,200	12,900	Jun	13,800	1,800	12,000	
	Oct	15,400	2,300	13,100	Jun	14,000	2,200	11,900	
	Sep	16,100	2,100	14,000	Jun	14,700	2,400	12,400	
	Aug	16,400	2,000	14,400	Jun	13,600	1,900	11,700	
	Jul	16,300	2,000	14,400	Jun	13,100	1,600	11,500	
Jun	15,800	2,000	13,800	Jun	12,800	1,800	11,100		
					Jun	13,300	2,100	11,200	
<b>Average June 1992 to 2007</b>		<b>14,100</b>	<b>1,900</b>	<b>12,300</b>			<b>14,100</b>	<b>1,900</b>	<b>12,300</b>

## Public and Private Sector Employment

		Total Employed	Public Sector*	Private Sector		
			Employees	Employees	Self- Employed	Total Private Sector
2007	Jun	14,900	5,700	6,600	2,600	9,200
	May	14,500	5,600	6,500	2,400	8,900
	Apr	14,400	5,500	6,500	2,400	8,900
	Mar	14,400	5,400	6,500	2,500	9,000
	Feb	14,600	5,400	6,500	2,600	9,100
	Jan	14,700	5,300	6,700	2,800	9,500
2006	Dec	15,000	5,400	6,900	2,700	9,600
	Nov	15,100	5,400	6,700	2,900	9,600
	Oct	15,400	5,500	7,100	2,900	10,000
	Sep	16,100	5,900	7,400	2,700	10,100
	Aug	16,400	6,200	7,600	2,600	10,200
	Jul	16,300	6,200	7,600	2,500	10,100
	Jun	15,800	6,000	7,400	2,400	9,800
2005	Jun	15,800	6,000	7,100	2,700	9,800
2004	Jun	15,400	5,800	7,300	2,400	9,700
2003	Jun	13,800	5,600	5,900	2,300	8,200
2002	Jun	14,000	5,600	6,100	2,400	8,500
2001	Jun	13,200	5,700	4,800	2,700	7,500
2000	Jun	13,900	5,600	5,400	3,000	8,400
1999	Jun	13,700	5,500	5,300	2,900	8,200
1998	Jun	13,800	5,600	6,000	2,100	8,100
1997	Jun	14,000	5,100	6,900	2,000	8,900
1996	Jun	14,700	5,300	7,200	2,300	9,500
1995	Jun	13,600	5,100	6,100	2,400	8,500
1994	Jun	13,100	4,700	5,900	2,500	8,400
1993	Jun	12,800	4,600	6,300	2,000	8,300
1992	Jun	13,300	4,900	6,300	2,200	8,500
<b>Average June 1992 to 2007</b>		<b>14,100</b>	<b>5,400</b>	<b>6,300</b>	<b>2,400</b>	<b>8,700</b>

\* includes Federal, Territorial, Municipal, and First Nation Band Office employment

## Labour Force

		By age			By sex & age				% Change June 2006 to June 2007
		15+	15-24	25+	Men		Women		
					15+	25+	15+	25+	
2007	Jun	15,800	2,600	13,200	8,100	6,600	7,700	6,600	<b>Both</b> 15+ -5.4% 15-24 -13.3% 25+ -3.6%
	May	15,300	2,300	13,000	8,000	6,500	7,300	6,400	
	Apr	15,200	2,300	12,900	7,800	6,400	7,400	6,500	
	Mar	15,100	2,300	12,800	7,700	6,300	7,400	6,500	
	Feb	15,100	2,300	12,800	7,600	6,200	7,500	6,600	
	Jan	15,400	2,400	13,100	7,900	6,500	7,600	6,600	
2006	Dec	15,400	2,300	13,100	7,900	6,500	7,500	6,600	<b>Men</b> 15+ -5.8% 25+ -5.7%
	Nov	15,700	2,300	13,400	8,000	6,700	7,600	6,600	
	Oct	16,000	2,500	13,500	8,300	6,900	7,800	6,700	
	Sep	16,900	3,000	13,900	8,700	7,000	8,200	6,900	
	Aug	17,200	3,400	13,800	8,900	7,000	8,300	6,800	
	Jul	17,200	3,500	13,700	8,900	6,900	8,300	6,800	
	Jun	16,700	3,000	13,700	8,600	7,000	8,000	6,700	
									<b>Women</b> 15+ -3.8% 25+ -1.5%

## Employed

		By age			By sex & age				% Change June 2006 to June 2007	
		15+	15-24	25+	Men		Women			
					15+	25+	15+	25+		
<b>2007</b>	Jun	14,900	2,300	12,600	7,500	6,200	7,400	6,400	Both 15+ -5.7% 15-24 -11.5% 25+ -4.5%	
	May	14,500	2,100	12,400	7,300	6,100	7,200	6,300		
	Apr	14,400	2,100	12,400	7,100	6,000	7,300	6,300		
	Mar	14,400	2,000	12,500	7,100	6,100	7,300	6,400		
	Feb	14,600	2,000	12,600	7,200	6,100	7,400	6,500		
<b>2006</b>	Jan	14,700	2,100	12,700	7,400	6,300	7,400	6,400	Men 15+ -7.4% 25+ -7.5%	
	Dec	15,000	2,200	12,800	7,600	6,300	7,400	6,500		
	Nov	15,100	2,000	13,000	7,600	6,500	7,500	6,600		
	Oct	15,400	2,200	13,200	7,800	6,600	7,600	6,600		
	Sep	16,100	2,600	13,500	8,100	6,700	8,000	6,800		
	Aug	16,400	3,000	13,400	8,400	6,800	8,100	6,600		
	Jul	16,300	3,100	13,300	8,300	6,700	8,000	6,500		
	Jun	15,800	2,600	13,200	8,100	6,700	7,700	6,500		Women 15+ -3.9% 25+ -1.5%

## Participation Rate

Change (% points) June 2006 to June 2007		By age			By sex & age				
		15+	15-24	25+	Men		Women		
					15+	25+	15+	25+	
		-----%-----			-----%-----				
Both 15+ -3.5 15-24 -8.0 25+ -2.5	<b>2007</b>	Jun	74.2	63.4	76.7	76.4	78.6	72.0	75.0
		May	71.8	56.1	75.1	75.5	77.4	68.2	72.7
		Apr	71.0	56.1	74.6	73.6	76.2	68.5	73.0
		Mar	70.6	56.1	74.0	72.6	75.0	68.5	73.0
		Feb	70.6	56.1	74.0	71.0	73.8	69.4	74.2
Men 15+ -4.0 25+ -4.7	<b>2006</b>	Jan	71.6	57.1	75.7	73.8	77.4	70.4	74.2
		Dec	71.6	54.8	75.7	73.8	77.4	69.4	74.2
Nov		73.0	54.8	77.5	74.8	78.8	70.4	74.2	
Oct		74.4	59.5	78.0	77.6	81.2	72.2	75.3	
Sep		78.6	71.4	80.3	81.3	82.4	75.9	77.5	
Aug		80.0	81.0	79.8	83.2	83.3	76.9	76.4	
Jul		80.0	83.3	79.2	83.2	82.1	76.9	76.4	
Jun		77.7	71.4	79.2	80.4	83.3	73.4	75.3	
Women 15+ -1.4 25+ -0.3									

## Employment Rate

		By age			By sex & age				Change (% points) June 2006 to June 2007	
		15+	15-24	25+	Men		Women			
					15+	25+	15+	25+		
		-----%-----			-----%-----					
<b>2007</b>	Jun	70.0	56.1	73.3	70.8	73.8	69.2	72.7	Both 15+ -3.5 15-24 -5.8 25+ -3.0	
	May	68.1	51.2	71.7	68.9	72.6	67.3	71.6		
	Apr	67.3	51.2	71.7	67.0	71.4	67.6	70.8		
	Mar	67.3	48.8	72.3	67.0	72.6	67.6	71.9		
	Feb	68.2	48.8	72.8	67.3	72.6	68.5	73.0		
<b>2006</b>	Jan	68.4	50.0	73.4	69.2	75.0	68.5	71.9	Men 15+ -4.9 25+ -6.0	
	Dec	69.8	52.4	74.0	71.0	75.0	68.5	73.0		
	Nov	70.2	47.6	75.1	71.0	76.5	69.4	74.2		
	Oct	71.6	52.4	76.3	72.9	77.6	70.4	74.2		
	Sep	74.9	61.9	78.0	75.7	78.8	74.1	76.4		
	Aug	76.3	71.4	77.5	78.5	81.0	75.0	74.2		
	Jul	75.8	73.8	76.9	77.6	79.8	74.1	73.0		
	Jun	73.5	61.9	76.3	75.7	79.8	70.6	73.0		Women 15+ -1.4 25+ -0.3

## Where the numbers come from

Every month Statistics Canada surveyors in each province and territory of Canada interview a representative sample of individuals 15 years of age and older. The surveyors ask these individuals if they were working, or were looking and available for work, during the “reference week” (usually the 3<sup>rd</sup> week of the month). Individuals are counted as employed if:

- they worked for at least 1 hour during the reference week (“work” includes self-employment).

Individuals are counted as unemployed if:

- they were without work but had looked for work in the past 4 weeks;
- they had been laid off but were not looking for work because they expected to return to their original work;
- they were not looking for work because they had a new job starting within 4 weeks.

If someone is neither employed nor unemployed they are then defined as not in the labour force and therefore not counted in the unemployment rate. However, they are still considered to be part of the working-age population.

The survey described above is called the Labour Force Survey (LFS). The Yukon has been included in the LFS since January 1992. However, the national rates for Canada do not include any of the territories.

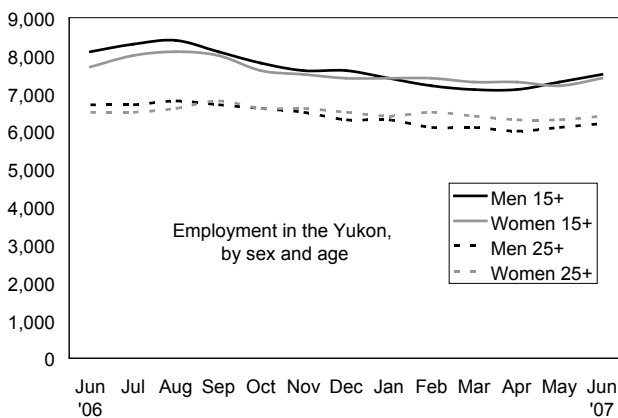
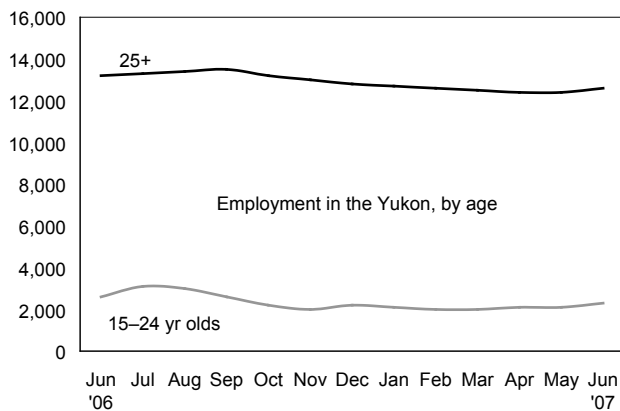
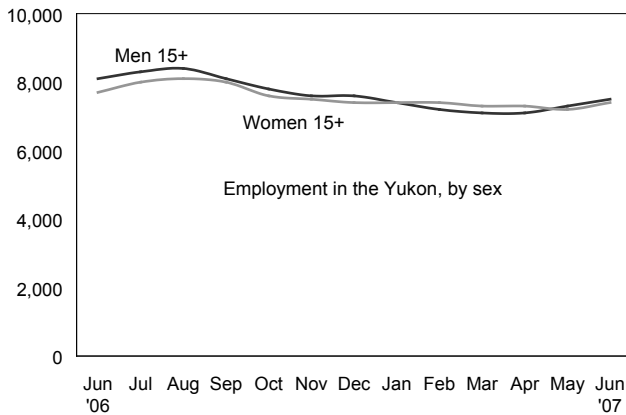
The objectives of the LFS are to divide the working-age population into three mutually exclusive classifications – employed, unemployed and not in the labour force – and to provide descriptive and explanatory data on each of these categories.

The LFS is the only source of monthly estimates of total employment including the self-employed, full- and part-time employment, and unemployment. It publishes monthly standard labour market indicators such as the unemployment rate, the employment rate and the participation rate. The LFS is a major source of information on the personal characteristics of the working-age population, including age, sex, marital status, educational attainment, and family characteristics.

In the Yukon the LFS sample is designed to represent approximately 92% of the working-age population (Yukoners 15 years of age and older). Yukoners living in unorganized areas, full-time members of the armed forces and people living in institutions are not represented in the sample.

As a “household-based” survey, the LFS counts individuals as part of the labour force in the province or territory their home is in. Therefore, if an individual is working outside of the Yukon, in the NWT for instance, but still has their home in the Yukon, they are counted in the Yukon’s labour force.

**Suppression of Data.** For the Labour Force Survey in the Yukon, Statistics Canada suppresses any figure that is below 200 for confidentiality reasons in order to ensure the confidentiality of each individual respondent to the survey. In turn, percentages (i.e. employment or unemployment rates) based on suppressed numbers will also be suppressed.



## Definitions:

### 1. Employment

Employed persons are those who, during the reference week, did any work for pay or profit, or had a job and were absent from work.

### 2. Employment rate

Also referred to as “employment/population ratio,” it is the number of employed persons expressed as a percentage of the population aged 15 years and over. The employment rate for a particular group (for example, women aged 25 years and over) is the number employed in that group expressed as a percentage of the population for that group.

### 3. Goods-Producing Industries

Goods-Producing Industries (or goods sector, or goods industries): includes agriculture, other primary industries (forestry; fishing and trapping; mines, quarries and oil wells), manufacturing, construction and utilities (electric power, gas and water).

### 4. Labour force

The labour force is the civilian non-institutional population 15 years of age and over who, during the survey reference week, were employed or unemployed.

### 5. Not in the labour force

Persons not in the labour force are those who, during the reference week, were unwilling or unable to offer or supply labour services under conditions existing in their labour markets; that is, they were neither employed nor unemployed.

### 6. Participation rate

The participation rate is the total labour force expressed as a percentage of the population aged 15 years and over. The participation rate for a particular group (for example, women aged 25 years and over) is the labour force in that group expressed as a percentage of the population for that group.

### 7. Reference Week

The reference week is the entire calendar week (from Sunday to Saturday) covered by the Labour Force Survey each month. It is usually the week containing the 15th day of the month. The interviews are conducted during the following week, called the Survey Week, and the labour force status determined is that of the reference week.

### 8. Seasonal adjustment

Fluctuations in economic time series are caused by seasonal, cyclical and irregular movements. A seasonally adjusted series is one from which seasonal movements have been eliminated. Seasonal movements are defined as those that are caused by regular annual events such as climate, holidays, vacation periods and cycles related to crops, production and retail sales associated with Christmas and Easter. It should be noted that the seasonally adjusted series contain irregular as well as longer-term cyclical fluctuations.

### 9. Self-employed

There are two broad categories of workers: those who work for others and those who work for themselves, namely, the self-employed. The self-employed includes working owners of incorporated businesses, working owners of unincorporated businesses and other self-employed.

### 10. Service-Producing Industries

Service-Producing Industries (or service sector, or service industries): includes trade; transportation and warehousing; finance, insurance, real estate and leasing; professional, scientific and technical services; management, administrative and other support; educational services; health care and social assistance; information, culture and recreation; accommodation and food services; other services; and public administration.

### 11. Three-Month Moving Average

All monthly figures for the Territories, whether seasonally adjusted or unadjusted, are three-month moving averages – for example, the March 2004 unemployment rate of 6.0% is actually an average of the unemployment rates for the months of January, February and March. April's unemployment rate will become the average of the rates for February, March and April.

### 12. Unemployment

Unemployed persons are those who, during the reference week, were available for work and were either on temporary layoff, had looked for work in the past four weeks, or had a job to start within the next four weeks.

### 13. Unemployment rate

The unemployment rate is the number of unemployed persons expressed as a percentage of the labour force. The unemployment rate for a particular group (age, sex, marital status, etc.) is the number unemployed in that group expressed as a percentage of the labour force for that group.

Information sheet no. 34.182—July '07  
Next release date: August 13<sup>th</sup>, 2007