

## Yukon Employment Annual Review 2008

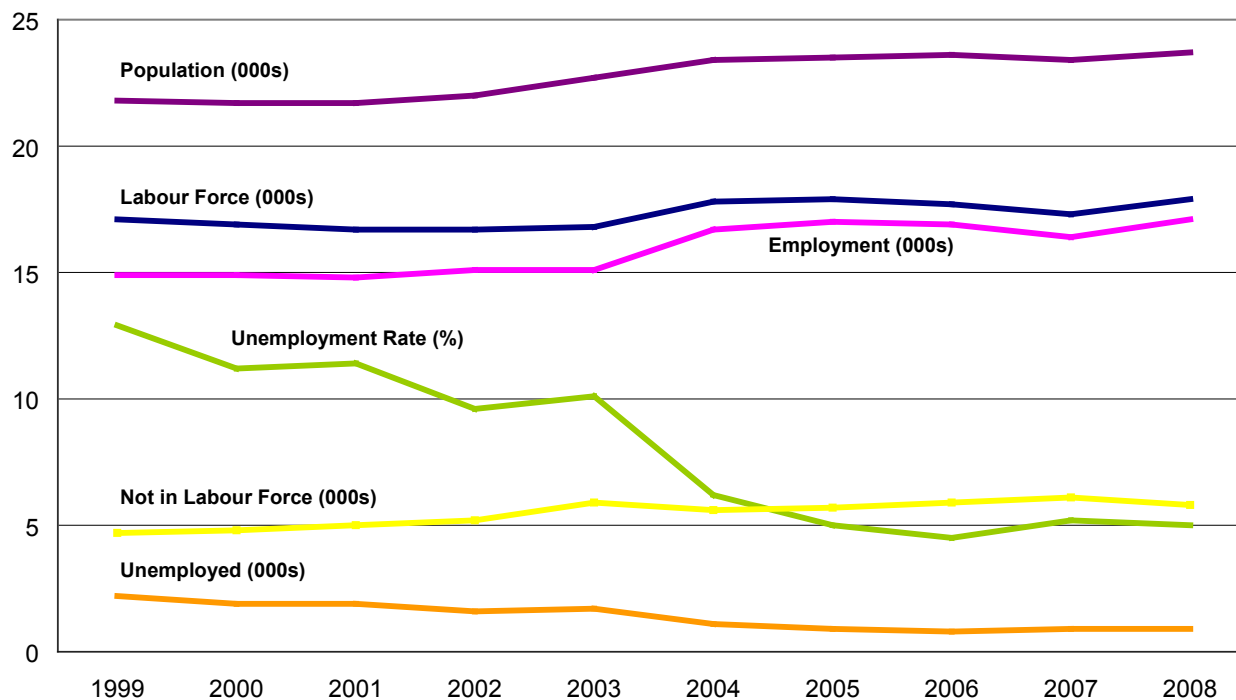
The employment situation in the Yukon continued to be strong in 2008. The unemployment rate of 5.0%, was the fifth lowest in Canada and was tied with 2005 for second lowest rate since Statistics Canada's monthly Labour Force Survey (LFS) began in the Yukon in 1992. The average number of employed workers in the Yukon was 17,100, which is an increase of 700 from 2007. As in 2007, an average of 900 workers were unemployed in 2008. These figures equate to a decrease of approximately 0.2 percentage points in the unemployment rate, from 5.2% in 2007 to 5.0% in 2008.

### Contents

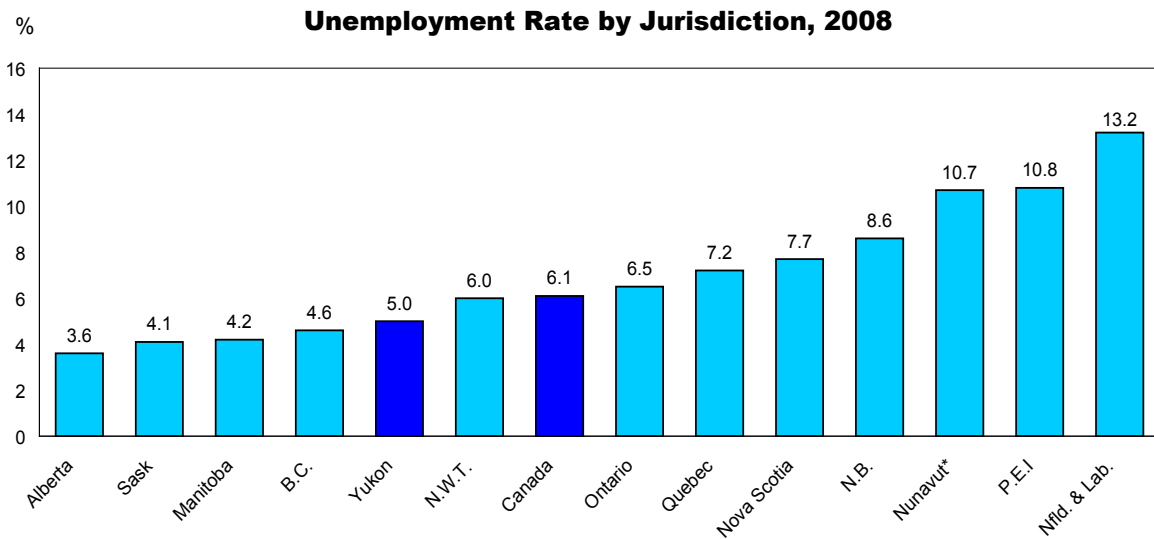
Labour Force Characteristics .....	2
Full-time/Part-time .....	3
Characteristics by Occupation.....	4
Hours Worked, Days Lost.....	5
Aboriginal Employment.....	6
Job Tenure.....	7
Definitions.....	8

*This report contains annual information derived from Statistics Canada's monthly Labour Force Survey. It serves as a supplement to the Yukon Bureau of Statistics' Yukon Employment Report.*

### Labour Force Survey Characteristics (Age 15+), Yukon, 1999-2008

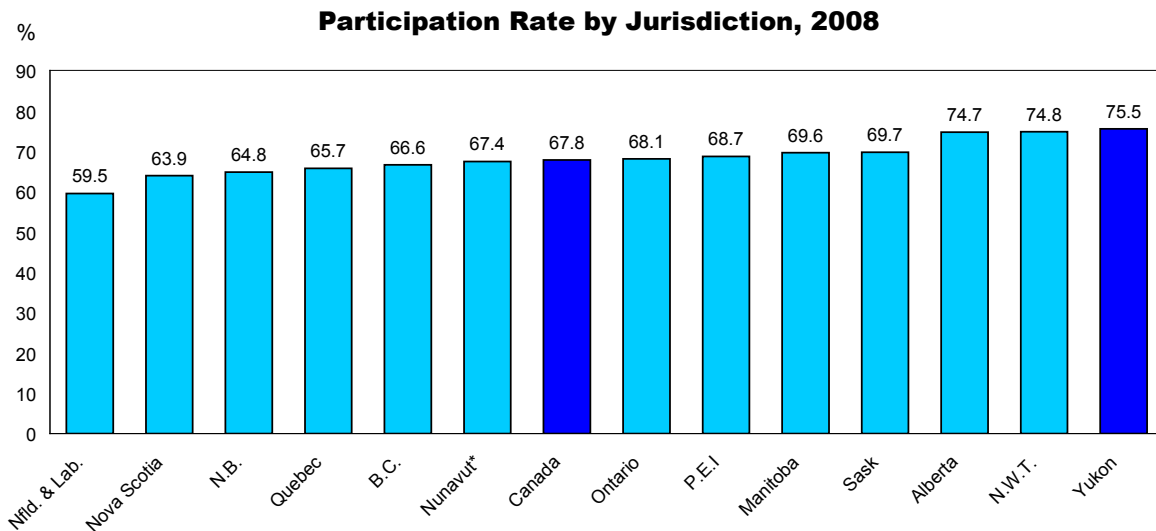


- From 1999 to 2003, the population, labour force, employed and unemployed all remained relatively stable. From 2003 to 2004, the population, labour force, and employed numbers all rose, while the unemployed figure fell slightly. 2006 and 2007 saw the number of unemployed stay stable while the labour force and the number of employed decreased slightly. In 2008, the population, labour force and number of employed all increased, while the number of unemployed remained the same over the previous year.
- The annual unemployment rate for the Yukon over the last 10 years has been more volatile. It was 12.9% in 1999 and decreased through 2004 before leveling off around 5.0% for the last 4 years.



\*Nunavut figure based on 10 largest communities.

- The Yukon's 2008 unemployment rate of 5.0% was the fifth lowest in Canada, marking the fifth consecutive year that the Territory's unemployment rate was below the national rate. The average unemployment rate in the Yukon over the last 10 years has been 8.1%.



\*Nunavut figure based on 10 largest communities.

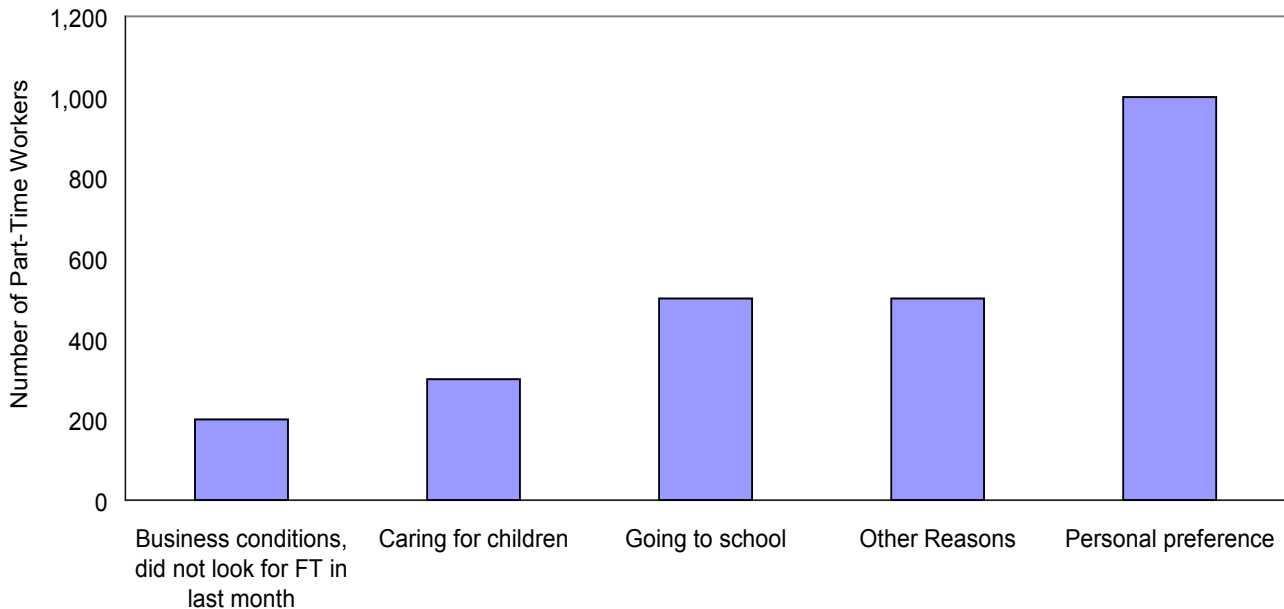
- The participation rate measures the percentage of the population aged 15+ that is in the labour force. The Yukon's participation rate over the past decade has averaged 76.0%, consistently higher than almost all other Canadian provinces and territories. Canada's average participation rate over the past decade was 66.9%. In 2008, the Yukon's participation rate was the highest in Canada, at 75.5%.
- From 1999 to 2008, the ratio of employees to self-employed Yukoners has been relatively stable. An average of 17.2% of the Yukon's total employed were self-employed, while 82.8% were employees. Canada's numbers have also been stable. Over the past ten years, an average of 15.5% of Canada's total employed were self-employed and 84.5% were employees.

### Type of Employment, Yukon, 1999 - 2008



In 2008, there were 14,500 full-time workers and 2,500 part-time workers in the Yukon. This shows that in 2008, 14.7% of all workers were part-time, whereas between 1999 and 2007, the percentage of employed that were part-time averaged 16.6%. In comparison, 18.4% of workers in Canada were part-time workers in 2008, consistent with the average percentage of part-time workers between 1999 and 2007 at 18.4%.

### Reasons for Working Part-Time, Yukon, 2008



Of the Yukon's 2,500 part-time workers in 2008, 40.0% stated personal preference as the main reason for working part-time. 20.0% indicated that they did not look for full-time work in the past month because they were going to school, and another 20.0% gave other reasons. 12.0% were caring for children while 8.0% cited business conditions as the main reason they did not look for full-time work in the last month.

## Characteristics by Occupation, Yukon, 2008

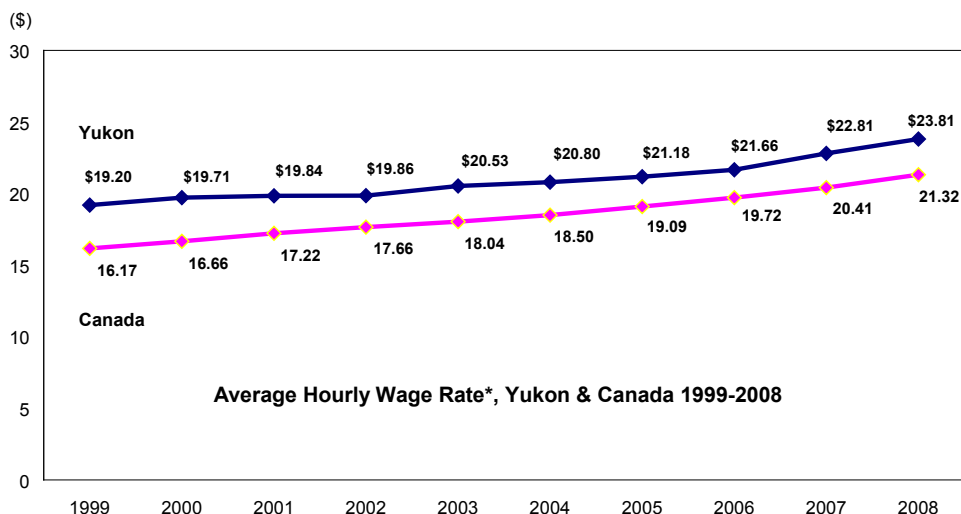
	Labour Force	Employed
<b>Total, all occupations</b>	<b>17,900</b>	<b>17,100</b>
<b>Management occupations</b>	<b>1,800</b>	<b>1,800</b>
Senior management occupations	200	200
Other management occupations	1,600	1,600
<b>Business, finance and administrative occupations</b>	<b>3,000</b>	<b>2,900</b>
Professional occupations in business and finance	400	400
Financial, secretarial and administrative occupations	700	700
Clerical occupations, including supervisors	1,900	1,800
<b>Natural and applied sciences and related occupations</b>	<b>1,200</b>	<b>1,100</b>
<b>Health occupations</b>	<b>1,000</b>	<b>1,000</b>
Professional occupations in health, nurse supervisors and registered nurses	600	600
Technical, assisting and related occupations in health	400	400
<b>Occupations in social science, education, government service and religion</b>	<b>2,200</b>	<b>2,100</b>
Occupations in social science, government service and religion	1,300	1,300
Teachers and professors	900	900
<b>Occupations in art, culture, recreation and sport</b>	<b>600</b>	<b>600</b>
<b>Sales and service occupations</b>	<b>4,100</b>	<b>3,800</b>
Wholesale, technical, insurance, real estate sales specialists, and retail, wholesale and grain buyers	300	300
Retail salespersons, sales clerks, cashiers, including retail trade supervisors	1,000	900
Chefs and cooks, and occupations in food and beverage service, including supervisors	600	600
Occupation in protective services	300	300
Childcare and home support workers	300	300
Sales and service occupations n.e.c., including occupations in travel and accommodation, attendants in recreation and sport as well as supervisors	1,700	1,500
<b>Trades, transport and equipment operators and related occupations</b>	<b>3,200</b>	<b>3,100</b>
Contractors and supervisors in trades and transportation	400	300
Construction trades	700	600
Other trades occupations	1,000	1,000
Transport and equipment operators	800	800
Trades helpers, construction, and transportation labourers and related occupations	400	300
<b>Occupations unique to primary industry</b>	<b>300</b>	<b>300</b>
<b>Occupations unique to processing, manufacturing and utilities</b>	<b>300</b>	<b>300</b>
Machine operators and assemblers in manufacturing, including supervisors	300	300
Labourer in processing, manufacturing and utilities	..	..
<b>Unclassified occupations</b>	<b>200</b>	<b>..</b>

.. = data suppressed for confidentiality.

- The Yukon's average hourly wage\* rate for all occupations, \$23.81, was higher than any province in Canada in 2008. It should be noted that figures for the Northwest Territories and Nunavut are not available.

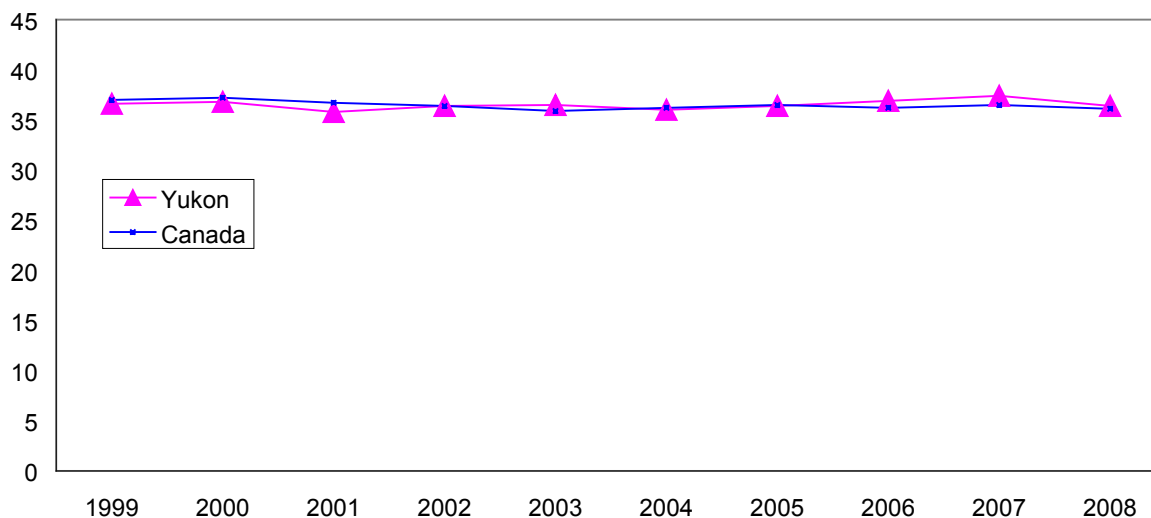
- The Yukon's hourly wage rate has increased from \$19.20 in 1999 to \$23.81 in 2008, an increase of \$4.61, or 24.0%.

- In comparison, Canada's hourly wage rate has increased from \$16.17 in 1999 to \$21.32 in 2008, an increase of \$5.15, or 31.8%.



\*Average hourly wage rate does not include self-employed workers.

### Average Actual Hours Worked (Paid and Unpaid), 1999 - 2008

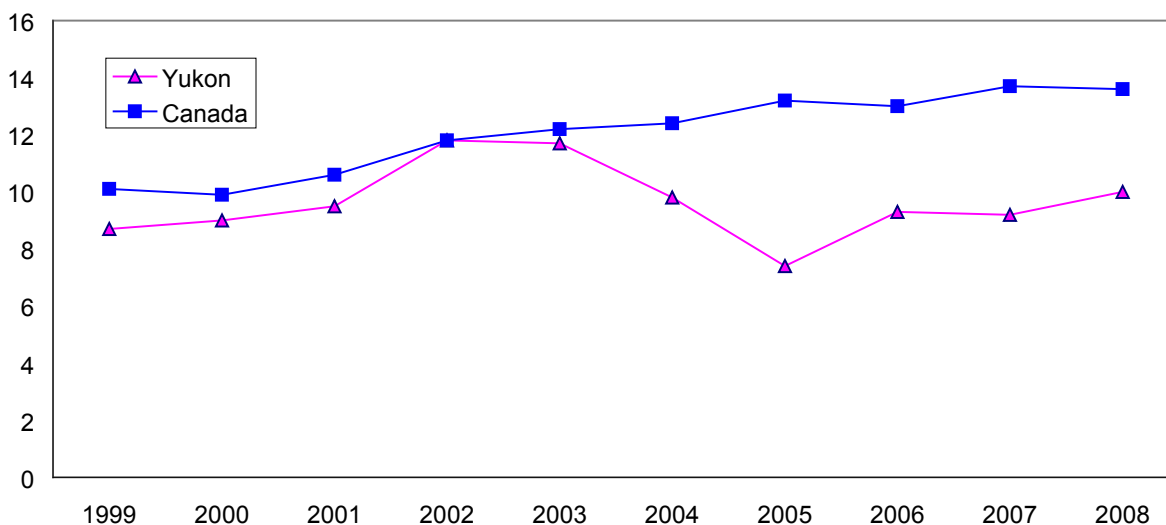


*Note: Average actual hours worked is calculated by dividing the total number of hours actually worked by all respondents at their main jobs during the reference week divided by the total number of employed persons.*

In the Yukon in 2008, occupations unique to primary industry showed the highest average actual hours worked, at 51.5 hours per week. Chefs and cooks, and occupations in food and beverage service, including supervisors, reported the lowest average actual hours worked per week, at 30.7 hours.

In Canada, occupations unique to primary industry also reported the highest average actual hours worked, at 45.1 hours per week. Nationally, retail salespersons, sales clerks and cashiers, including retail trade supervisors, reported the lowest average actual hours worked, at 28.1 hours per week.

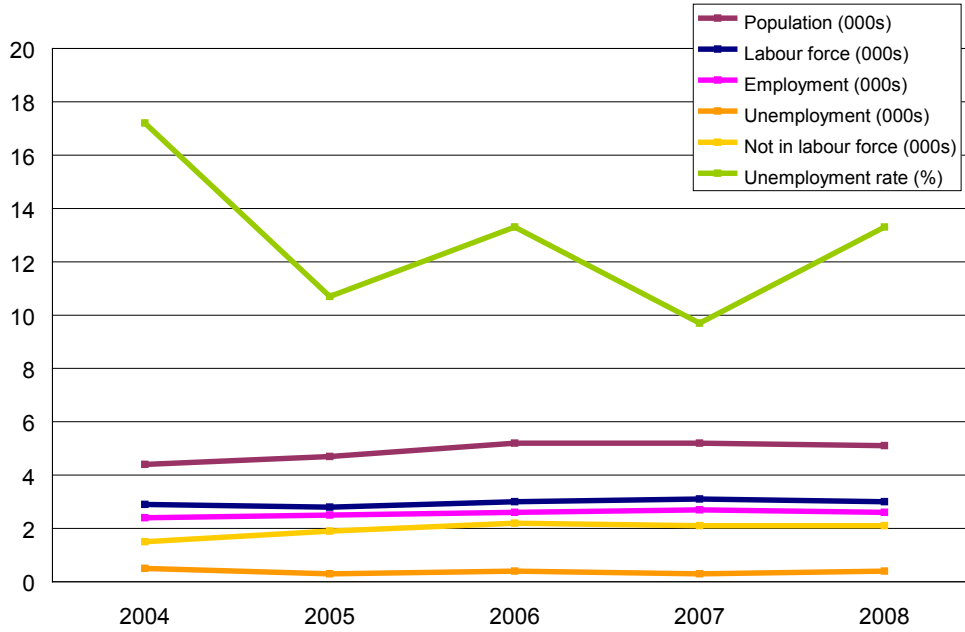
### Average Annual Days Lost For Personal Reasons, 1999 - 2008



*Note: The estimated number of days lost per worker per year is calculated by pro-rating the time lost during the reference week for personal reasons over the whole year. These estimates apply only to full-time employees who are single job holders (does not include self-employed workers). Personal reasons include family responsibilities, maternity leave and own illness or disability.*

In Canada, an average of 13.6 days were lost per worker for personal reasons in 2008. In the Yukon, an average of 10.0 days were lost per worker for personal reasons. This was the lowest rate in Canada, although data is not available for the NWT or Nunavut. Quebec had the highest average in 2008, at 16.1 days lost per worker for personal reasons.

### Aboriginal Labour Force Characteristics, Yukon, 2004\*- 2008

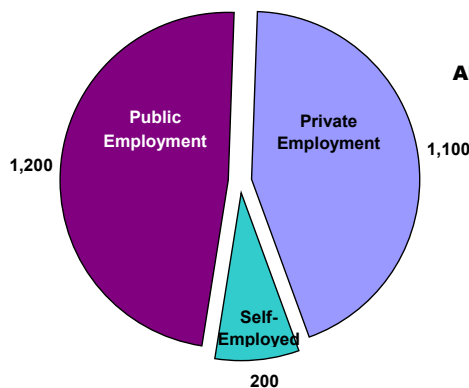
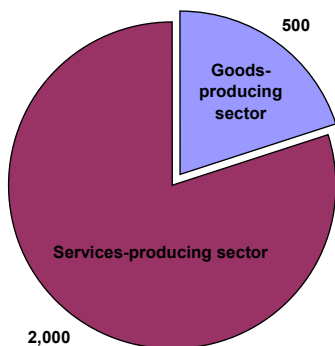


\*2004 was the first year Yukon aboriginal data was available from the Labour Force Survey. Aboriginal is self-identified. It is a descriptor used by Statistics Canada which includes First Nation, Métis and Inuit.

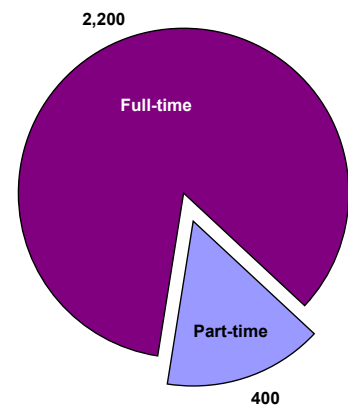
- The number of aboriginals in the labour force decreased slightly from 3,100 in 2007 to 3,000 in 2008. The number of employed aboriginals also decreased by 100, from 2,700 in 2007 to 2,600 in 2008.
- In 2008, 1,200 Yukon aboriginals worked in the Public sector (Federal Government, Government of Yukon, Municipal Governments or First Nation Governments), 1,100 worked in the Private sector and 200 were self-employed. In comparison, there were 5,400 non-aboriginal Yukoners working in the Public sector, 6,900 in the Private sector, and 2,100 who were self-employed.
- In 2008, 2,000 of the Yukon aboriginals employed workforce were working in the Services-producing sector (including Trade, Transportation, Business, Education, Health, etc.). The Goods-producing sector (including Agriculture, Forestry/Fishing/Mining/Oil/Gas, Utilities, Construction and Manufacturing) had 500 Yukon aboriginals working in it. The non-aboriginal Yukon employed workforce had 12,100 people working in the Services-producing sector and 2,400 in Goods-producing industries.
- In 2008, 84.6% employed aboriginals worked full-time in the Yukon, in comparison to 84.8% of non-aboriginals.

#### Aboriginal Class of Worker, Yukon

Aboriginal Employment by Industry, Yukon



Aboriginal Type of Employment, Yukon

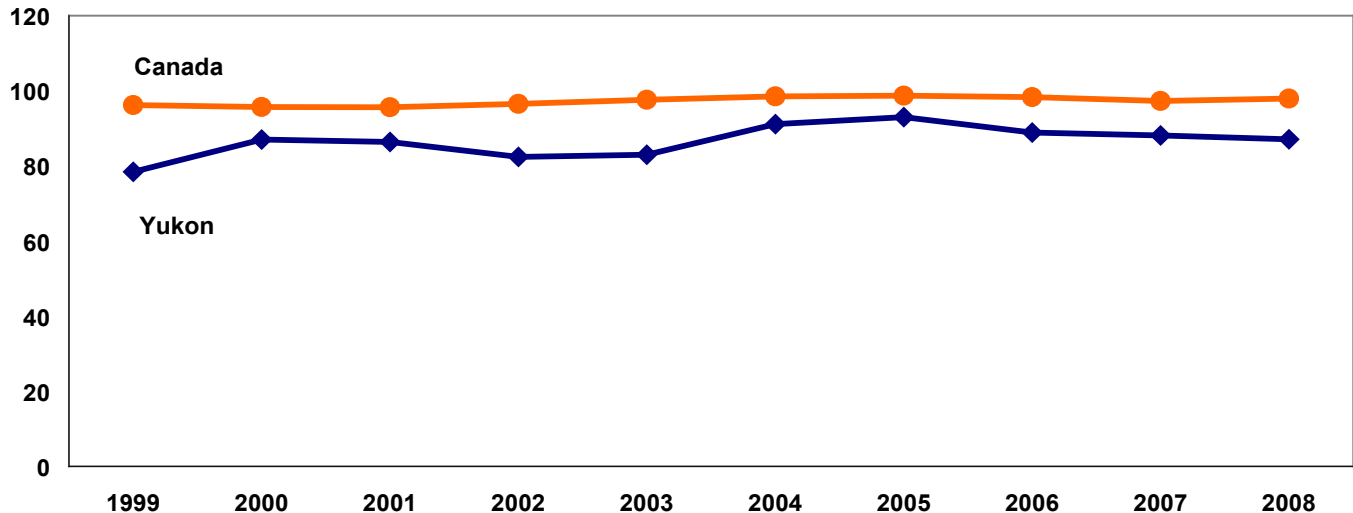


2008

	Aboriginal			Non-Aboriginal	
	2007	2008		2007	2008
Population	5,200	5,100		18,200	18,600
Labour force	3,100	3,000		14,200	14,900
Employment	2,700	2,600		13,700	14,500
Full-time employment	2,300	2,200		11,600	12,300
Part-time employment	400	400		2,100	2,200
Unemployment	300	400		500	400
Not in labour force	2,100	2,100		4,000	3,700
Unemployment rate	9.7%	13.3%		3.5%	2.7%
Participation rate	59.6%	58.8%		78.0%	80.1%
Employment rate	51.9%	51.0%		75.3%	78.0%

- In 2008, the labour force recorded a decrease of 100 people among the aboriginal population in the Yukon, while the non-aboriginal labour force showed an increase of 700 workers. From 2007 to 2008, the number of unemployed aboriginals increased by 100, while the number of unemployed non-aboriginals decreased by 100 people.
- The unemployment rate for the aboriginal population increased 3.6 percentage points between 2007 and 2008, from 9.7% to 13.3%. The non-aboriginal unemployment rate decreased from 3.5% in 2007 to 2.7% in 2008.
- In 2008, the employment rate among the Yukon aboriginal population was 51.0%, a decrease of 0.9 percentage points from the previous year. The employment rate for the Yukon non-aboriginal population increased 2.7 percentage points over the past year, from 75.3% in 2007 to 78.0% in 2008. The participation rate among non-aboriginals in the Yukon is roughly 1.5 times higher than the aboriginal population.

### Average Job Tenure in Months, 1999 - 2008



*Note: Job tenure measures the number of consecutive months or years a person has worked for the current (or most recent) employer (does not include self-employed workers). The employee may have worked in one or more occupations or in one or more locations or businesses and still be considered to have continuous tenure if the employer has not changed. But if a person has worked for the same employer over different periods of time, job tenure measures the most recent period of uninterrupted work. A temporary layoff does not constitute an interruption.*

- Canada's average job tenure has remained stable from 1999 to 2008, while the Yukon's average job tenure has been more variable, rising from 78.4 in 1999 to 93.0 in 2005, then gradually declining to the 2008 average of 87.1. Though there has been slight decline in the Yukon's average job tenure since 2006, the 2008 figure represents an increase of 8.7 months, or 11.1%, over the past ten years. In Canada in 2008, the average job tenure of a worker was 97.9 months, an increase of only 1.7 months, or 1.8%, over the last decade.
- In the Yukon in 2008, the Professional Occupations in Business and Finance category reported the longest job tenure, at 170.0 months. Retail Salespersons, Sales Clerks, Cashiers, including Retail Trade Supervisors, had the lowest average job tenure at 26.6 months.

## Where the numbers come from

Every month Statistics Canada surveyors in each province and territory of Canada interview a representative sample of individuals 15 years of age and older. The surveyors ask these individuals if they were working, or were looking and available for work, during the “reference week” (usually the 3<sup>rd</sup> week of the month). Individuals are counted as employed if:

- they worked for at least 1 hour during the reference week (“work” includes self-employment).

Individuals are counted as unemployed if:

- they were without work but had looked for work in the past 4 weeks;
- they had been laid off but were not looking for work because they expected to return to their original work;
- they were not looking for work because they had a new job starting within 4 weeks.

If someone is neither employed nor unemployed, they are then defined as not in the labour force and therefore not counted in

the unemployment rate. However, they are still considered to be part of the working-age population.

In the Yukon the LFS sample is designed to represent approximately 92% of the working-age population (Yukoners 15 years of age and older). Yukoners living in unorganized areas, full-time members of the armed forces and people living in institutions are not represented in the sample.

As a “household-based” survey, the LFS counts individuals as part of the labour force in the province or territory their home is in. Therefore, if an individual is working outside of the Yukon, in the NWT for instance, but still has their home in the Yukon, they are counted in the Yukon’s labour force.

For the Labour Force Survey in the Yukon, Statistics Canada suppresses any figure that is below 200 for confidentiality reasons. This is to ensure the confidentiality of each individual respondent to the survey. In turn, percentages (i.e. employment or unemployment rates) based on suppressed numbers will also be suppressed.

## Definitions:

### 1. Employment

*Employed persons are those who, during the reference week, did any work for pay or profit, or had a job and were absent from work.*

### 2. Employment rate

*Also referred to as “employment/population ratio,” it is the number of employed persons expressed as a percentage of the population aged 15 years and over. The employment rate for a particular group (for example, women aged 25 years and over) is the number employed in that group expressed as a percentage of the population for that group.*

### 3. Goods-Producing Industries

*Goods-Producing Industries (or goods sector, or goods industries): includes agriculture, other primary industries (forestry; fishing and trapping; mines, quarries and oil wells), manufacturing, construction and utilities (electric power, gas and water).*

### 4. Labour force

*The labour force is the civilian non-institutional population 15 years of age and over who, during the survey reference week, were employed or unemployed.*

### 5. Not in the labour force

*Persons not in the labour force are those who, during the reference week, were unwilling or unable to offer or supply labour services under conditions existing in their labour markets; that is, they were neither employed nor unemployed.*

### 6. Participation rate

*The participation rate is the total labour force expressed as a percentage of the population aged 15 years and over. The participation rate for a particular group (for example, women aged 25 years and over) is the labour force in that group expressed as a percentage of the population for that group.*

### 7. Service-Producing Industries

*Service-Producing Industries (or service sector, or service industries): includes trade; transportation and warehousing; finance, insurance, real estate and leasing; professional, scientific and technical services; management, administrative and other support; educational services; health care and social assistance; information, culture and recreation; accommodation and food services; other services; and public administration.*

### 8. Unemployment

*Unemployed persons are those who, during the reference week, were available for work and were either on temporary layoff, had looked for work in the past four weeks, or had a job to start within the next four weeks.*

### 9. Unemployment rate

*The unemployment rate is the number of unemployed persons expressed as a percentage of the labour force. The unemployment rate for a particular group (age, sex, marital status, etc.) is the number unemployed in that group expressed as a percentage of the labour force for that group.*

Information sheet no. 80.02–April ‘09

*Additional information:*

The Yukon Government  
Executive Council Office  
Bureau of Statistics (A-8C)

Box 2703, Whitehorse, Yukon Y1A 2C6

Telephone: (867) 667-5640; Fax: (867) 393-6203

email: [ybsinfo@gov.yk.ca](mailto:ybsinfo@gov.yk.ca)

website: [www.eco.gov.yk.ca/stats/](http://www.eco.gov.yk.ca/stats/)