

YUKON BUREAU OF STATISTICS



Yukon Employment December 2014

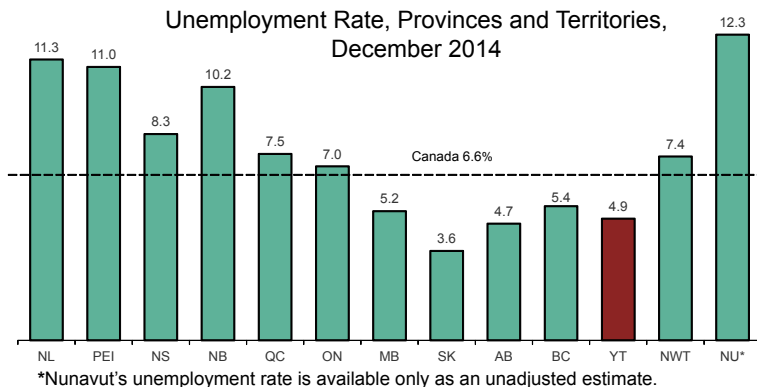
Highlights:

- Yukon's unemployment rate in December 2014 (4.9%) increased by 0.5 percentage points compared to November 2014 (4.4%).
- Compared to November 2014 figures, Yukon's labour force remained the same at 20,400, the number of employed remained the same at 19,500 and the number of unemployed increased by 100 to 1,000.

December 2014

Yukon Employment at a Glance

Labour force	20,400
Employed.....	19,500
Unemployed	1,000
Unemployment Rate.....	4.9%
Employment Rate.....	70.4%



What's Inside:

Overview.....	1
Comparisons with Canada	2
Seasonally Adjusted, 15+	3
Seasonally Adjusted, 25+	4
Unadjusted, 15+	5
Age, Full-time and Part-time.....	6
Industry and Class of Worker ...	7
Definitions.....	8

- Nationally, comparing December 2014 to November 2014 figures, the unemployment rate remained the same at 6.6%.
- Compared to November 2014 figures, the labour force in Canada in December 2014 decreased by 0.1%, the number of employed remained virtually unchanged and the number of unemployed decreased by 0.5%.

Notes: All figures are based on Statistics Canada's Labour Force Survey (LFS) estimates. Statistics Canada reports LFS figures rounded to the nearest hundred. Therefore, components may not add up to the total.

Analyses and data tables in pages 1 through 4 are based on seasonally adjusted numbers. Unadjusted figures are available on pages 5 through 7.

Seasonally adjusted employment figures are widely used and quoted, as they are considered to be a more accurate picture of the current employment situation than unadjusted figures. Some variables, however, are only available on an unadjusted basis. Comparisons between adjusted and unadjusted figures should not be made. For more information, see [definitions on page 8](#).

Other Sources of Labour Market Information:

Statistics Canada's Daily Release - a summary of the current Labour Force Survey numbers from across Canada. <http://www.statcan.gc.ca/daily-quotidien/150109/dq150109a-eng.htm>

Yukon Employment Annual Review, 2013 - Annual summary of Yukon Labour Force Survey data; includes Aboriginal/Non-aboriginal and Rural/Whitehorse data. http://www.eco.gov.yk.ca/stats/pdf/employment_2013.pdf

Yukon Survey of Employment, Payrolls and Hours, 2013 - detailed annual information on number of paid employees, payrolls, and hours worked. Based on a com-

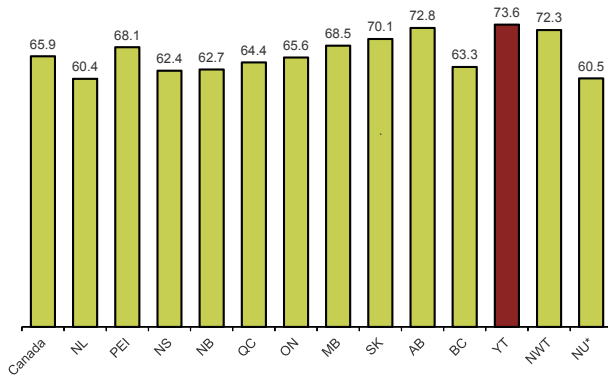
bination of administrative data from Canada Revenue Agency and results from the Business Payroll Survey. http://www.eco.gov.yk.ca/stats/pdf/seph_2013.pdf

Yukon 2013 Business Survey - Yukon businesses' vacancies (by occupation and industry) and challenges recruiting staff. http://www.eco.gov.yk.ca/stats/pdf/2013_Business_Survey_Report_R.pdf

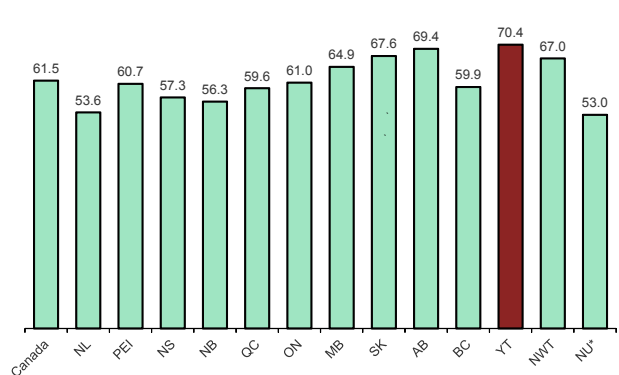
2011 National Household Survey: Education, Labour, Mobility and Migration - summary information on Yukon in May 2011. http://www.eco.gov.yk.ca/stats/pdf/Education_Labour_Mobility_Migration_2011.pdf

Comparisons with Canada, Provinces and Territories - Snapshot

Participation Rate, December 2014



Employment Rate, December 2014



*Nunavut's participation rate and employment rate are available only as unadjusted estimates.

The participation rate measures the percentage of the population aged 15 years and over, which is working or actively looking for work. Yukon's participation rate in December 2014 was 73.6%, the highest in Canada.

Yukon's December 2014 employment rate (the percentage of the population aged 15 years and over, which is employed), at 70.4%, was also the highest in Canada.

Comparisons with Canada and Selected Provinces - Historical

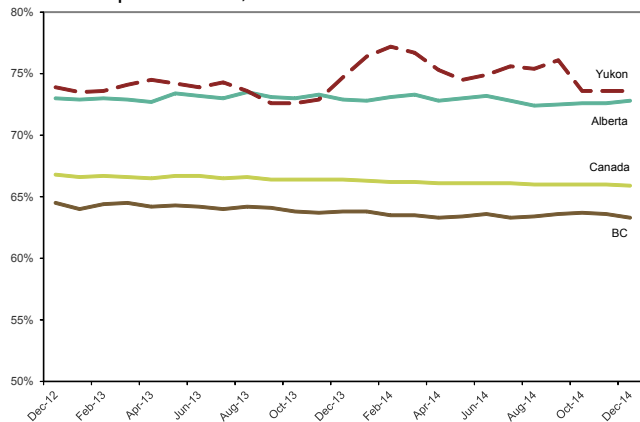
The Labour Force Survey estimates that 73.6% of Yukoners aged 15 years and over were employed or seeking employment in December 2014.

Yukon's participation rate in December 2014 (73.6%) remained the same as November 2014 (73.6%) and decreased 1.1 percentage points compared to December 2013 (74.7%).

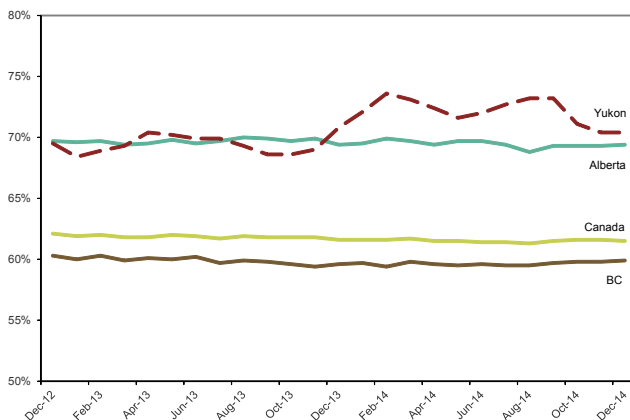
The December 2014 employment rate of 70.4%, remained the same as November 2014 (70.4%) and was down 0.4 percentage points compared to December 2013 (70.8%).

Yukon's labour market in terms of participation rate and employment rate tends to be similar to Alberta's. However, as is often the case with a small population base, our rates show a higher degree of volatility.

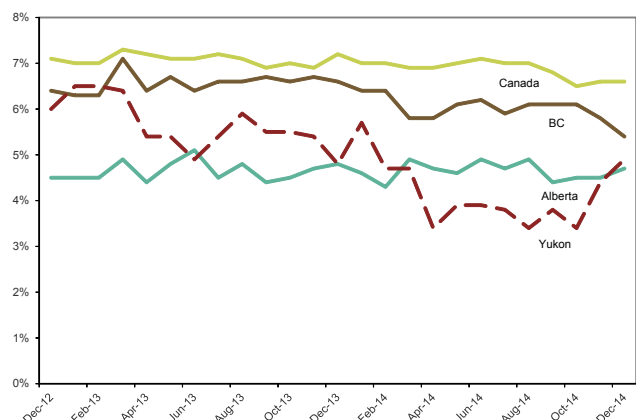
Participation Rate, December 2012 - December 2014



Employment Rate, December 2012 - December 2014



Unemployment Rate, December 2012 - December 2014

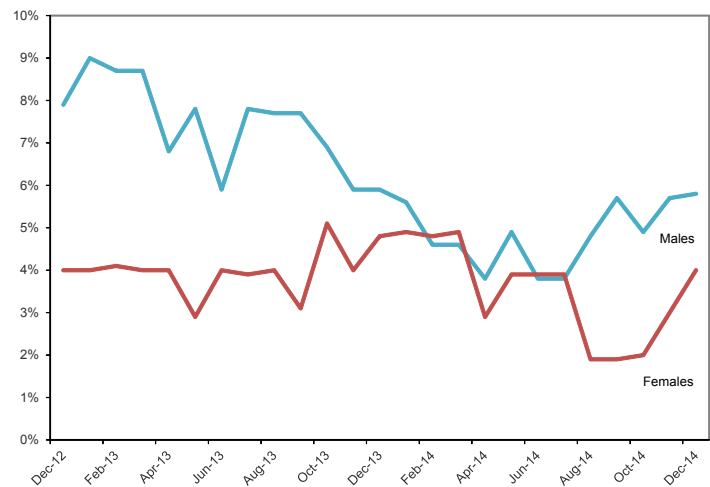


Seasonally Adjusted Labour Force, aged 15+ years, Yukon

	Labour Force			Employment			Unemployment		
	Both sexes	Males	Females	Both sexes	Males	Females	Both sexes	Males	Females
Dec-14	20,400	10,400	10,000	19,500	9,800	9,600	1,000	600	400
Nov-14	20,400	10,500	9,900	19,500	9,900	9,600	900	600	300
Oct-14	20,400	10,200	10,100	19,700	9,700	9,900	700	500	200
Sep-14	21,000	10,500	10,400	20,200	10,000	10,200	800	600	200
Aug-14	20,800	10,500	10,300	20,200	10,100	10,100	700	500	200
Jul-14	20,800	10,600	10,300	20,000	10,100	9,900	800	400	400
Jun-14	20,600	10,400	10,200	19,800	9,900	9,900	800	400	400
May-14	20,500	10,300	10,200	19,700	9,800	9,900	800	500	400
Apr-14	20,700	10,400	10,200	19,900	10,000	9,900	700	400	300
Mar-14	21,100	10,800	10,300	20,100	10,300	9,800	1,000	500	500
Feb-14	21,300	10,900	10,400	20,300	10,400	10,000	1,000	500	500
Jan-14	21,100	10,800	10,300	19,900	10,200	9,800	1,200	600	500
Dec-13	20,700	10,200	10,400	19,600	9,700	9,900	1,000	600	500
Nov-13	20,200	10,200	10,000	19,100	9,600	9,600	1,100	600	400
Oct-13	20,100	10,200	9,900	19,000	9,500	9,500	1,100	700	500
Sep-13	20,100	10,400	9,700	19,000	9,600	9,400	1,100	800	300
Aug-13	20,400	10,400	10,000	19,200	9,600	9,600	1,200	800	400
Jul-13	20,500	10,300	10,200	19,300	9,600	9,800	1,100	800	400
Jun-13	20,400	10,200	10,100	19,300	9,600	9,700	1,000	600	400
May-13	20,400	10,200	10,200	19,300	9,400	9,800	1,100	800	300
Apr-13	20,400	10,300	10,100	19,300	9,600	9,700	1,100	700	400
Mar-13	20,300	10,300	10,000	19,000	9,500	9,600	1,300	900	400
Feb-13	20,100	10,300	9,800	18,800	9,400	9,400	1,300	900	400
Jan-13	20,000	10,000	9,900	18,600	9,100	9,500	1,300	900	400
Dec-12	20,100	10,100	10,000	18,900	9,200	9,600	1,200	800	400

	Unemployment rate		
	Both sexes	Males	Females
Dec-14	4.9	5.8	4.0
Nov-14	4.4	5.7	3.0
Oct-14	3.4	4.9	2.0
Sep-14	3.8	5.7	1.9
Aug-14	3.4	4.8	1.9
Jul-14	3.8	3.8	3.9
Jun-14	3.9	3.8	3.9
May-14	3.9	4.9	3.9
Apr-14	3.4	3.8	2.9
Mar-14	4.7	4.6	4.9
Feb-14	4.7	4.6	4.8
Jan-14	5.7	5.6	4.9
Dec-13	4.8	5.9	4.8
Nov-13	5.4	5.9	4.0
Oct-13	5.5	6.9	5.1
Sep-13	5.5	7.7	3.1
Aug-13	5.9	7.7	4.0
Jul-13	5.4	7.8	3.9
Jun-13	4.9	5.9	4.0
May-13	5.4	7.8	2.9
Apr-13	5.4	6.8	4.0
Mar-13	6.4	8.7	4.0
Feb-13	6.5	8.7	4.1
Jan-13	6.5	9.0	4.0
Dec-12	6.0	7.9	4.0

Unemployment Rate, 15+, Males and Females, December 2012 - December 2014



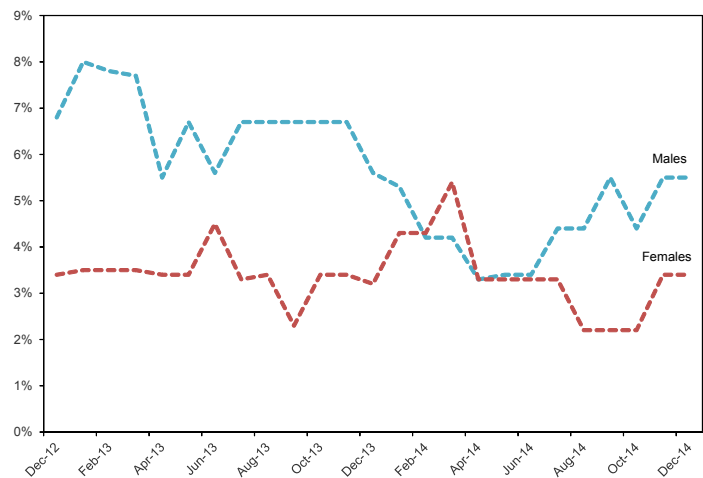
Note: Data may not add up to the totals due to rounding.

Seasonally Adjusted Labour Force, aged 25+ years, Yukon

	Labour Force			Employment			Unemployment		
	Both sexes	Males	Females	Both sexes	Males	Females	Both sexes	Males	Females
Dec-14	17,900	9,100	8,800	17,100	8,600	8,500	800	500	300
Nov-14	17,900	9,100	8,800	17,100	8,600	8,600	800	500	300
Oct-14	18,000	9,000	8,900	17,300	8,600	8,800	600	400	200
Sep-14	18,300	9,100	9,100	17,600	8,600	9,000	700	500	200
Aug-14	18,200	9,100	9,100	17,600	8,700	8,900	600	400	200
Jul-14	18,200	9,000	9,100	17,500	8,700	8,800	600	400	300
Jun-14	18,100	8,900	9,200	17,500	8,600	8,900	600	300	300
May-14	18,200	8,900	9,200	17,500	8,600	8,900	700	300	300
Apr-14	18,400	9,100	9,200	17,800	8,800	9,000	600	300	300
Mar-14	18,700	9,500	9,200	17,800	9,100	8,800	900	400	500
Feb-14	18,900	9,500	9,400	18,000	9,100	8,900	900	400	400
Jan-14	18,600	9,400	9,200	17,600	8,800	8,800	1,000	500	400
Dec-13	18,300	9,000	9,300	17,500	8,500	8,900	800	500	300
Nov-13	17,900	9,000	8,900	17,100	8,400	8,600	800	600	300
Oct-13	17,800	9,000	8,800	16,900	8,300	8,500	900	600	300
Sep-13	17,600	8,900	8,700	16,800	8,300	8,500	900	600	200
Aug-13	17,900	9,000	8,900	16,900	8,300	8,600	1,000	600	300
Jul-13	18,000	9,000	9,000	17,100	8,400	8,700	900	600	300
Jun-13	17,900	9,000	8,900	17,100	8,500	8,600	900	500	400
May-13	17,800	8,900	8,800	16,900	8,400	8,500	900	600	300
Apr-13	17,800	9,100	8,700	16,900	8,600	8,400	900	500	300
Mar-13	17,700	9,100	8,600	16,700	8,400	8,300	1,000	700	300
Feb-13	17,600	9,000	8,600	16,600	8,300	8,200	1,000	700	300
Jan-13	17,300	8,700	8,600	16,300	8,000	8,300	1,000	700	300
Dec-12	17,500	8,800	8,700	16,600	8,200	8,300	900	600	300

	Unemployment rate		
	Both sexes	Males	Females
Dec-14	4.5	5.5	3.4
Nov-14	4.5	5.5	3.4
Oct-14	3.3	4.4	2.2
Sep-14	3.8	5.5	2.2
Aug-14	3.3	4.4	2.2
Jul-14	3.3	4.4	3.3
Jun-14	3.3	3.4	3.3
May-14	3.8	3.4	3.3
Apr-14	3.3	3.3	3.3
Mar-14	4.8	4.2	5.4
Feb-14	4.8	4.2	4.3
Jan-14	5.4	5.3	4.3
Dec-13	4.4	5.6	3.2
Nov-13	4.5	6.7	3.4
Oct-13	5.1	6.7	3.4
Sep-13	5.1	6.7	2.3
Aug-13	5.6	6.7	3.4
Jul-13	5.0	6.7	3.3
Jun-13	5.0	5.6	4.5
May-13	5.1	6.7	3.4
Apr-13	5.1	5.5	3.4
Mar-13	5.6	7.7	3.5
Feb-13	5.7	7.8	3.5
Jan-13	5.8	8.0	3.5
Dec-12	5.1	6.8	3.4

Unemployment Rate, 25+, Males and Females, December 2012 - December 2014



Note: Data may not add up to the totals due to rounding.

Labour Force, *Unadjusted* and Annual, aged 15+ years, Yukon

Highlights:

- Compared to November 2014, full-time employment in December 2014 (16,700) decreased by 500 and part-time employment (2,600) increased by 400.
- Between November and December 2014, employment in the goods-producing sector decreased by

200 to 2,700. Employment in the services-producing sector remained the same at 16,500.

- Of all those employed in December 2014: 46.6% were private sector employees; 40.9% were public sector employees (see note on page 7); and 12.4% were self-employed.

	Labour Force			Employment			Unemployment		
	Both sexes	Males	Females	Both sexes	Males	Females	Both sexes	Males	Females
Dec-14	20,200	10,400	9,800	19,300	9,800	9,500	900	600	400
Nov-14	20,100	10,500	9,700	19,400	10,000	9,400	700	400	300
Oct-14	20,500	10,500	10,100	20,000	10,100	9,900	600	400	200
Sep-14	21,400	10,800	10,600	20,800	10,400	10,400	600	400	200
Aug-14	21,500	10,900	10,600	21,000	10,600	10,400	500	300	200
Jul-14	21,400	10,900	10,400	20,700	10,600	10,100	700	300	400
Jun-14	20,900	10,600	10,300	20,000	10,100	9,900	900	500	400
May-14	20,600	10,400	10,200	19,500	9,700	9,800	1,000	700	400
Apr-14	20,300	10,100	10,200	19,400	9,500	9,900	900	600	300
Mar-14	20,500	10,300	10,300	19,300	9,500	9,800	1,200	700	500
Feb-14	20,800	10,400	10,400	19,700	9,700	9,900	1,200	700	500
Jan-14	20,800	10,600	10,200	19,500	9,800	9,700	1,300	800	500
Dec-13	20,600	10,300	10,300	19,600	9,800	9,800	1,000	500	500
2013	20,400	10,300	10,100	19,300	9,600	9,600	1,100	700	400
2012	20,400	10,200	10,200	18,900	9,300	9,700	1,400	900	500
2011	20,200	10,300	9,900	19,100	9,700	9,400	1,100	600	500
2010	18,900	9,800	9,100	17,500	9,000	8,500	1,300	800	600
2009	18,700	9,600	9,100	17,300	8,700	8,600	1,300	900	500
2008	18,900	9,800	9,100	18,000	9,100	8,900	900	700	300
2007	18,100	9,400	8,800	17,200	8,800	8,400	900	600	300
2006	18,200	9,500	8,700	17,400	9,000	8,400	800	500	200
2005	18,100	9,200	8,800	17,200	8,600	8,600	900	600	300
2004	17,800	8,900	8,900	16,700	8,200	8,500	1,100	700	400

	Unemployment rate			Participation rate			Employment rate		
	Both sexes	Males	Females	Both sexes	Males	Females	Both sexes	Males	Females
Dec-14	4.5	5.8	4.1	72.9	75.9	70.0	69.7	71.5	67.9
Nov-14	3.5	3.8	3.1	72.6	76.6	69.3	70.0	73.0	67.1
Oct-14	2.9	3.8	2.0	74.0	76.6	72.1	72.2	73.7	70.7
Sep-14	2.8	3.7	1.9	77.5	78.8	76.3	75.4	75.9	74.8
Aug-14	2.3	2.8	1.9	77.9	79.6	76.3	76.1	77.4	74.8
Jul-14	3.3	2.8	3.8	77.8	79.6	74.8	75.3	77.4	72.7
Jun-14	4.3	4.7	3.9	76.0	77.4	74.1	72.7	73.7	71.2
May-14	4.9	6.7	3.9	74.9	75.9	73.9	70.9	70.8	71.0
Apr-14	4.4	5.9	2.9	73.8	73.7	73.9	70.5	69.3	71.7
Mar-14	5.9	6.8	4.9	74.5	75.2	74.6	70.2	69.3	71.0
Feb-14	5.8	6.7	4.8	75.4	75.9	75.4	71.4	70.8	71.7
Jan-14	6.3	7.5	4.9	75.4	76.8	73.4	70.7	71.0	69.8
Dec-13	4.9	4.9	4.9	74.4	74.6	74.1	70.8	71.0	70.5
2013	5.4	6.8	4.0	73.9	74.6	73.2	69.9	69.6	69.6
2012	6.9	8.8	4.9	75.6	75.6	75.6	70.0	68.9	71.9
2011	5.4	5.8	5.1	76.2	77.4	75.0	72.1	72.9	71.2
2010	6.9	8.2	6.6	72.7	74.8	70.5	67.3	68.7	65.9
2009	7.0	9.4	5.5	73.9	75.0	72.8	68.4	68.0	68.8
2008	4.8	7.1	3.3	75.9	77.8	74.0	72.3	72.2	72.4
2007	5.0	6.4	3.4	74.2	76.4	73.3	70.5	71.5	70.0
2006	4.4	5.3	2.3	75.8	77.9	73.1	72.5	73.8	70.6
2005	5.0	6.5	3.4	76.4	76.7	75.2	72.6	71.7	73.5
2004	6.2	7.9	4.5	76.7	76.1	77.4	72.0	70.1	73.9

Note: Data may not add up to the totals due to rounding.

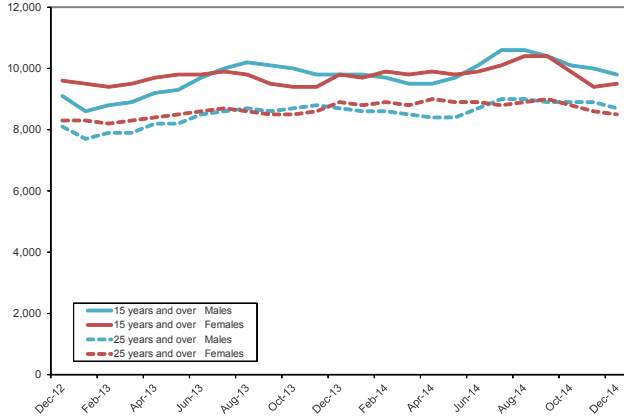
Labour Force, *Unadjusted*, by Age and Sex, December 2014

		Labour force	Employment	Unemployment	Not in labour force	Unemployment rate	Participation rate	Employment rate
Both Sexes	15 +	20,200	19,300	900	7,500	4.5	72.9	69.7
	15 - 24	2,200	2,100	200	2,000	9.1	52.4	50.0
	25 +	18,000	17,200	800	5,500	4.4	76.6	73.2
	25 - 54	13,900	13,400	500	1,500	3.6	90.3	87.0
	55 +	4,100	3,800	300	4,000	7.3	50.6	46.9
Males	15 +	10,400	9,800	600	3,300	5.8	75.9	71.5
	15 - 24	1,200	1,100	x	900	x	57.1	52.4
	25 +	9,100	8,700	500	2,400	5.5	78.4	75.0
	25 - 54	6,900	6,600	300	400	4.3	93.2	89.2
	55 +	2,200	2,100	200	2,000	9.1	52.4	50.0
Females	15 +	9,800	9,500	400	4,200	4.1	70.0	67.9
	15 - 24	1,000	1,000	x	1,100	x	47.6	47.6
	25 +	8,800	8,500	300	3,100	3.4	73.9	71.4
	25 - 54	7,000	6,800	200	1,000	2.9	87.5	85.0
	55 +	1,900	1,700	x	2,000	x	48.7	43.6

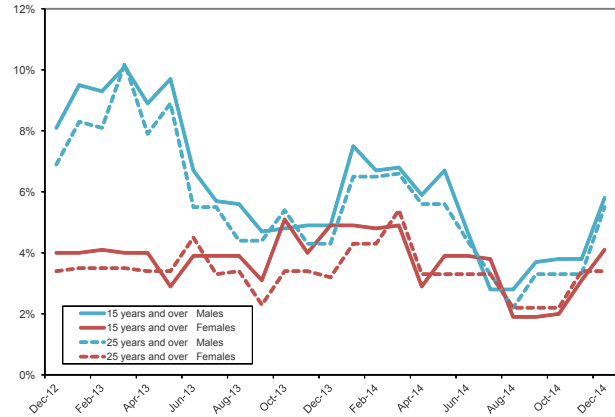
x = suppressed for confidentiality

Note: Data may not add up to the totals due to rounding.

Employment by Age and Sex, December 2012 - December 2014



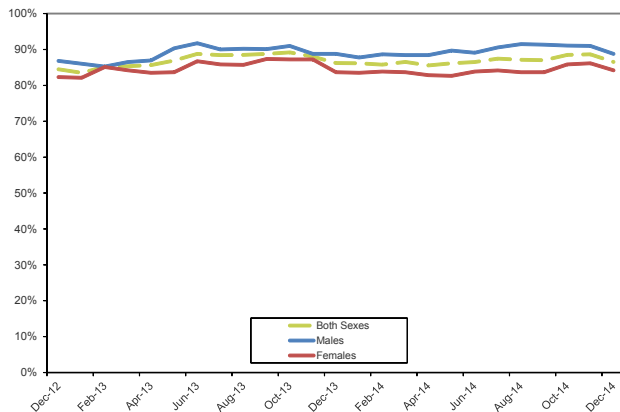
Unemployment Rate by Age and Sex, December 2012 - December 2014



- Comparing December 2014 to November 2014, the unemployment rate for males aged 15 years and over increased from 3.8% to 5.8%, and the rate for males aged 25 years and over increased from 3.3% to 5.5%. The rate for females aged 15 years increased from 3.1% to 4.1%, and the rate for females aged 25 years over remained the same at 3.4%.
- Until December 2014, the unemployment rate for Yukon's youth (aged 15-24) had been suppressed since July 2014 as the number of unemployed was below 200 in each of the previous five months. In December 2014 the rate was 9.1%. It appears from the numbers that the youth unemployment rate has consistently been under 10% for the last sixteen months.

Employment, *Unadjusted*, by Full-time/Part-time, December 2014

Full-time employment as a percentage of all employment, December 2012 - December 2014



- Of Yukon's workers aged 15 years and over, 16,700, or 86.5%, were employed full-time in December 2014. This was the third-highest proportion among all other jurisdictions behind the Nunavut (91.0%) and Northwest Territories (89.6%).
- Nationally, 80.4% of employed Canadians worked full-time in December.
- Of employed Yukon males, 88.8% worked full-time, compared to 84.2% of employed Yukon females did.
- Comparing December 2014 to November 2014, full-time employment decreased by 500 to 16,700, while part-time employment increased by 400 to 2,600.

Employment, *Unadjusted*, by Industry, December 2014

	Both sexes	Males	Females
Total employed	19,300	9,800	9,500
Goods-producing sector	2,700	2,400	300
Forestry, fishing, mining, oil and gas	600	600	x
Construction	1,600	1,500	200
Services-producing sector	16,500	7,300	9,200
Trade	2,200	1,200	1,000
Transportation and warehousing	700	400	300
Finance, insurance, real estate and leasing	700	300	400
Professional, scientific and technical services	1,400	700	700
Educational services	1,900	600	1,200
Health care and social assistance	2,600	400	2,100
Information, culture and recreation	1,300	800	500
Accommodation and food services	1,400	800	600
Public administration	3,700	1,400	2,200

x = suppressed for confidentiality

Notes:

The sum of industries does not equal sector totals as industries with fewer than 500 workers are not shown; row data may not add up to industry totals due to rounding. 'Industry' refers to the general nature of the business carried out by the employer for whom the LFS respondent works (main job only).

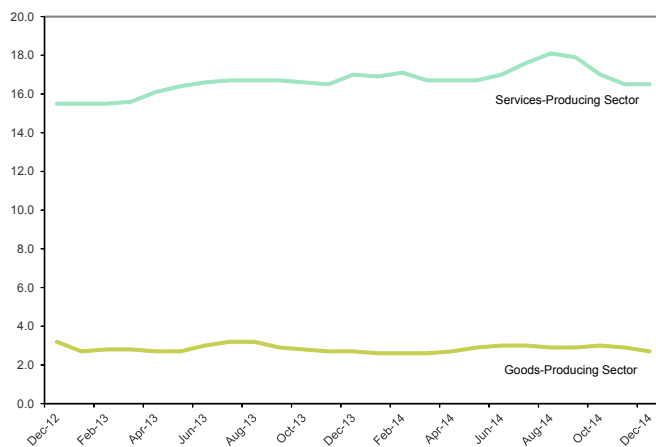
- In December 2014, 16,500, or 85.5% of working Yukoners were employed in the services-producing sector, while 2,700, or 14.0%, were employed in the goods-producing sector.
- 59.3% of Yukoners working in the goods-producing sector had jobs in the construction industry; 22.2% in the forestry, fishing, mining, oil and gas industries.
- While females accounted for 55.8% of workers in Yukon's services-producing sector, only 11.1% of the goods-producing sector workers were female.

Goods- and services-producing sectors

The goods-producing sector includes industries that are involved in extracting resources directly from the earth (e.g. farming, mining, logging) or processing the resources (e.g. utilities, construction, manufacturing). Yukon's goods-producing sector consists primarily of industries in construction and mining.

The services-producing sector includes industries involved in the provision of services.

Goods- and Services-Producing Sectors, Employment, December 2012 - December 2014



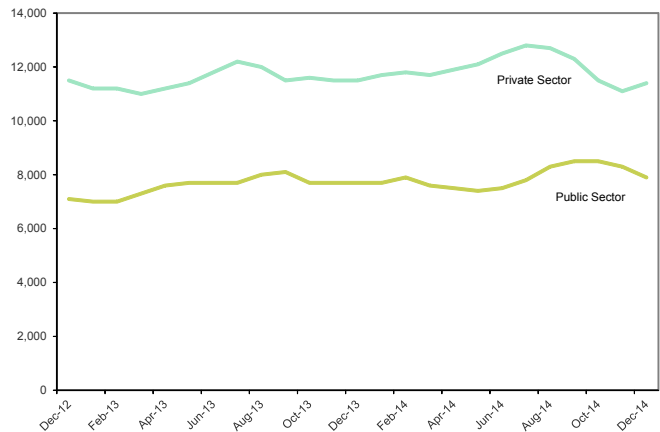
- Employment in Yukon's goods-producing sector peaked in August 2012 with 3,900 workers. Employment in the services-producing sector in August 2014 reached 18,100, the record-high level to date.
- Comparing December 2014 to December 2013, employment in the goods-producing sector remained the same at 2,700, while employment in the services-producing sector decreased by 500 workers, or 2.9%.

Public and Private Sectors, *Unadjusted*, December 2014

	Both sexes	Males	Females
Total Employed	19,300	9,800	9,500
Public employees	7,900	3,100	4,900
Total private sector	11,400	6,700	4,600
Private employees	9,000	5,100	3,900
Self-employed	2,400	1,600	700

- In December 2014, 40.9% of working Yukoners were employed by one of the four levels of government in the territory.
- Of the private sector, 21.1% were self-employed.
- In December 2014, private sector employment increased by 300, or 2.7%, from November 2014, while public sector employment decreased by 400, or 4.8%.

Public/Private Sector Employment, December 2012 - December 2014



Notes:

'Employees' include full-time, part-time, permanent and temporary employees.

'Public employees' are those who work for: a government at the federal, provincial, territorial, municipal, First Nations or other Aboriginal government level; a government service or agency; a Crown corporation; or for a government funded establishment such as schools (including colleges/universities), hospitals and public libraries.

'Private employees' include all employees who work for private firms or businesses.

Labour Force Survey Definitions

Employment — Employed persons are those who, during the reference week, did any work for pay or profit, or had a job and were absent from work.

Employment rate — Also referred to as “employment/population ratio,” it is the number of employed persons expressed as a percentage of the population aged 15 years and over. The employment rate for a particular group (for example, women aged 25 years and over) is the number employed in that group expressed as a percentage of the population for that group.

Goods-Producing Industries — Goods-Producing Industries (or goods sector, or goods industries): includes agriculture, other primary industries (forestry; fishing and trapping; mines, quarries and oil wells), manufacturing, construction and utilities (electric power, gas and water).

Labour force — The labour force is the civilian non-institutional population 15 years of age and over who, during the survey reference week, were employed or unemployed.

Not in the labour force — Persons not in the labour force are those who, during the reference week, were unwilling or unable to offer or supply labour services under conditions existing in their labour markets; that is, they were neither employed nor unemployed.

Participation rate — The participation rate is the total labour force expressed as a percentage of the population aged 15 years and over. The participation rate for a particular group (for example, women aged 25 years and over) is the labour force in that group expressed as a percentage of the population for that group.

Reference Week — The reference week is the entire calendar week (from Sunday to Saturday) covered by the Labour Force Survey each month. It is usually the week containing the 15th day of the month. The interviews are conducted during the following week, called the Survey Week, and the labour force status determined is that of the reference week.

Seasonal adjustment — Fluctuations in economic time series are caused by seasonal, cyclical and irregular movements. A seasonally adjusted series is one from which seasonal movements have been eliminated. Seasonal movements are defined as those that are caused

by regular annual events such as climate, holidays, vacation periods and cycles related to crops, production and retail sales associated with Christmas and Easter. It should be noted that the seasonally adjusted series contain irregular as well as longer-term cyclical fluctuations.

Self-employed — There are two broad categories of workers: those who work for others and those who work for themselves, namely, the self-employed. The self-employed includes working owners of incorporated businesses, working owners of unincorporated businesses and other self-employed.

Service-Producing Industries — Service-Producing Industries (or service sector, or service industries): includes trade; transportation and warehousing; finance, insurance, real estate and leasing; professional, scientific and technical services; management, administrative and other support; educational services; health care and social assistance; information, culture and recreation; accommodation and food services; other services; and public administration.

Three-Month Moving Average — All monthly figures for the Territories, whether seasonally adjusted or unadjusted, are three-month moving averages – for example, the March 2011 unemployment rate of 4.5% is actually an average of the unemployment rates for the months of January, February and March. April’s unemployment rate became the average of the rates for February, March and April. Because they are three-month moving averages, the Territories’ figures are not included in the calculation of Canada’s numbers.

Unemployment — Unemployed persons are those who, during the reference week, were available for work and were either on temporary layoff, had looked for work in the past four weeks, or had a job to start within the next four weeks.

Unemployment rate — The unemployment rate is the number of unemployed persons expressed as a percentage of the labour force. The unemployment rate for a particular group (age, sex, marital status, etc.) is the number unemployed in that group expressed as a percentage of the labour force for that group.

Information sheet no. 34.266– January 2015
Next release date: February 9, 2015

Yukon
Executive Council Office
Bureau of Statistics

Additional information
Government of Yukon
Executive Council Office
Bureau of Statistics (A-8C)
Box 2703, Whitehorse, Yukon Y1A 2C6
Telephone: (867) 667-5640; Fax: (867) 393-6203
email: ybsinfo@gov.yk.ca
website: www.eco.gov.yk.ca/stats/