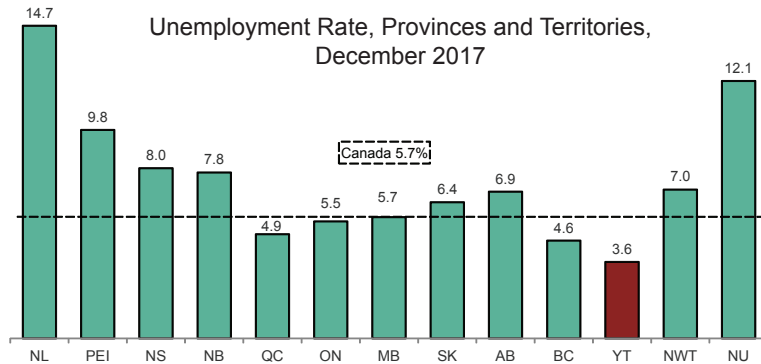


Yukon Employment December 2017

Highlights:

- In December 2017, Yukon's unemployment rate (3.6%) decreased 0.5 percentage points compared to the rate in November 2017 (4.1%).
- Compared to figures for November 2017, Yukon's labour force remained the same at 22,000, the number of employed increased by 100 to 21,200 and the number of unemployed decreased by 100 to 800.



- Nationally, the December 2017 unemployment rate (5.7%) decreased by 0.2 percentage points compared to the rate in November 2017 (5.9%).
- Compared to November 2017 figures, the labour force in Canada increased 0.3%, the number of employed increased 0.4% and the number of unemployed decreased 2.3%.

December 2017 Yukon Employment at a Glance:

Labour Force	22,000
Employed.....	21,200
Unemployed	800
Unemployment Rate.....	3.6%
Employment Rate.....	73.1%

Contents:

Overview.....	1
Comparisons with Canada	2
Seasonally Adjusted, 15+	3
Seasonally Adjusted, 25+	4
Unadjusted, 15+	5
Age, Full-time and Part-time.....	6
Industry and Class of Worker	7
Definitions.....	8

Notes: All figures are based on Statistics Canada's Labour Force Survey (LFS) estimates. Statistics Canada reports LFS figures rounded to the nearest hundred. Therefore, components may not add up to the total.

Analyses and data tables in pages 1 through 4 are based on seasonally adjusted numbers. Unadjusted figures are available on pages 5 through 7.

Seasonally adjusted employment figures are widely used and quoted, as they are considered to be a more accurate picture of the current employment situation than unadjusted figures. Some variables, however, are only available on an unadjusted basis. Comparisons between adjusted and unadjusted figures should not be made. For more information, see [definitions on page 8](#).

Other Sources of Labour Market Information:

Statistics Canada's Daily Release - a summary of the current Labour Force Survey numbers from across Canada. <http://www.statcan.gc.ca/daily-quotidien/180105/dq180105a-eng.htm>

Yukon Employment Annual Review, 2016 - Annual summary of Yukon Labour Force Survey data; includes Aboriginal/non-Aboriginal and Rural/Whitehorse data. http://www.eco.gov.yk.ca/stats/pdf/employment_2016.pdf

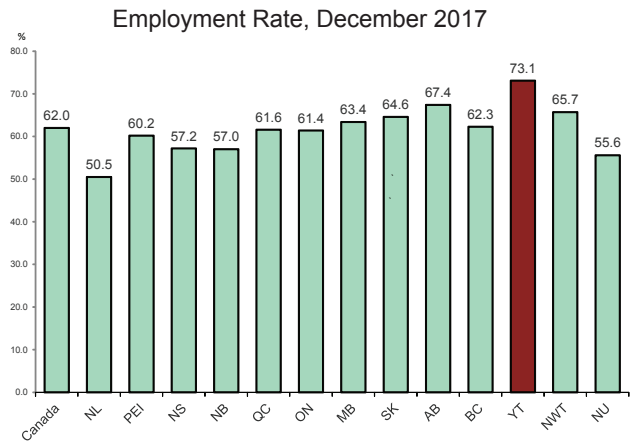
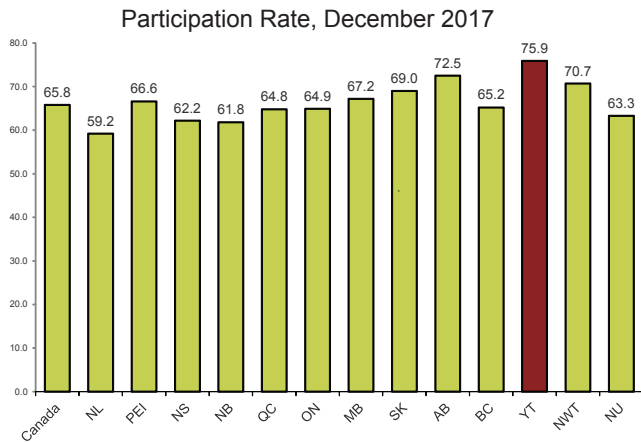
Yukon Employment Historical Data, 2007-2016 - detailed monthly and annual data tables based on Labour Force Survey. http://www.eco.gov.yk.ca/stats/pdf/Historical_LFS_2016.pdf

Yukon Survey of Employment, Payrolls and Hours, 2016 - detailed annual information on number of paid employees, payrolls, and hours worked. http://www.eco.gov.yk.ca/stats/pdf/seph_2016.pdf

Yukon Labour Demand Survey, 2016 - information on employment, vacancies and expected vacancies. http://www.eco.gov.yk.ca/stats/pdf/2016_Labour_Demand_Survey_Reportr.pdf

Yukon Employment and Skills Survey, 2016 - detailed information on employment, unemployment, and education and training. http://www.eco.gov.yk.ca/stats/pdf/2016_Yukon_Employment_Skills_Survey_Report.pdf

Comparisons with Canada, Provinces and Territories - Snapshot



The participation rate measures the percentage of the population aged 15 years and over, which is working or actively looking for work. In December 2017, Yukon's participation rate (75.9%) was the highest in Canada, followed by Alberta (72.5%).

Yukon's December 2017 employment rate (the percentage of the population aged 15 years and over, which is employed), was 73.1%, also the highest in Canada, followed by Alberta (67.4%).

Comparisons with Canada and Selected Provinces - Historical

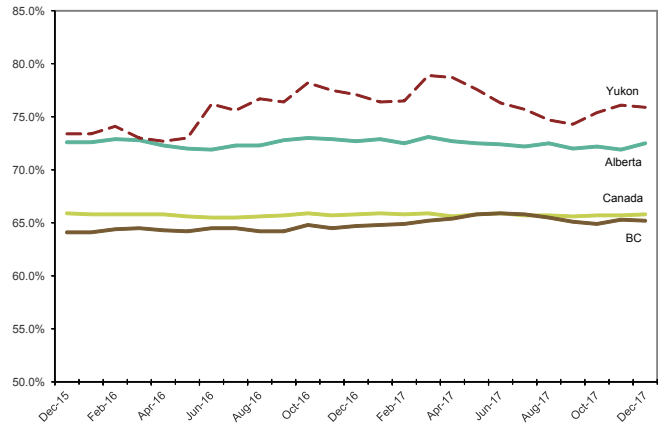
The Labour Force Survey estimates that 75.9% of Yukoners aged 15 years and over were employed or seeking employment in December 2017.

Yukon's participation rate in December 2017 (75.9%) decreased by 0.2 percentage points compared to the rate in November 2017 (76.1%) and decreased by 1.2 percentage points compared to the rate in December 2016 (77.1%).

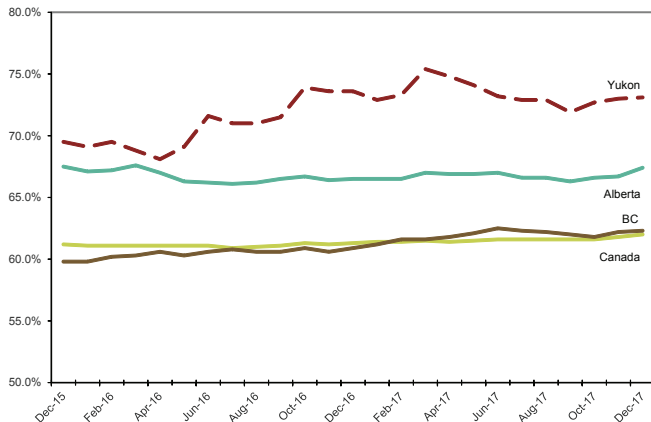
The December 2017 employment rate of 73.1% increased by 0.1 percentage point compared to the rate in November 2017 (73.0%) and decreased 0.5 percentage points compared to the rate in December 2016 (73.6%).

Yukon's labour market in terms of participation rate and employment rate tends to be similar to Alberta's. However, as is often the case with a small population base, our rates show a higher degree of volatility.

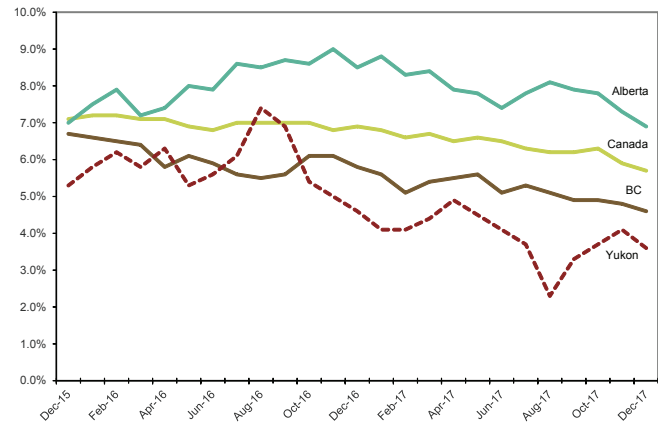
Participation Rate, December 2015 - December 2017



Employment Rate, December 2015 - December 2017



Unemployment Rate, December 2015 - December 2017

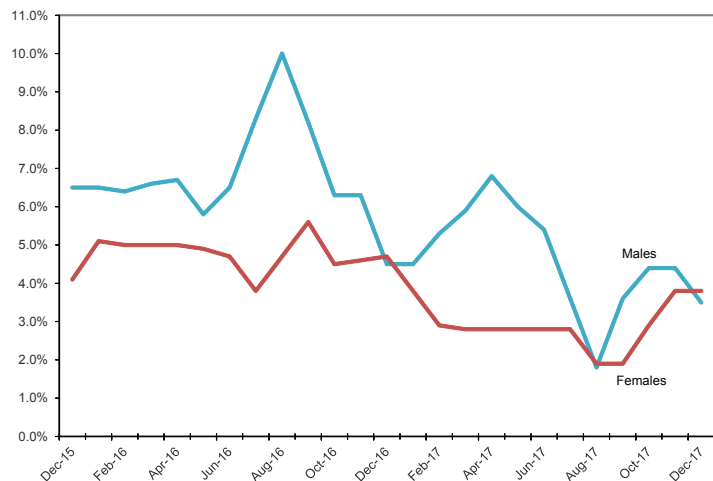


Seasonally Adjusted Labour Force, aged 15+ years, Yukon

	Labour Force			Employment			Unemployment		
	Both sexes	Males	Females	Both sexes	Males	Females	Both sexes	Males	Females
Dec-17	22,000	11,400	10,600	21,200	11,000	10,200	800	400	400
Nov-17	22,000	11,400	10,600	21,100	10,900	10,300	900	500	400
Oct-17	21,800	11,300	10,400	21,000	10,900	10,100	800	500	300
Sep-17	21,400	11,100	10,300	20,700	10,700	10,000	700	400	200
Aug-17	21,500	11,000	10,500	21,000	10,800	10,300	500	200	200
Jul-17	21,800	11,000	10,800	21,000	10,600	10,500	800	400	300
Jun-17	21,900	11,100	10,800	21,000	10,500	10,500	900	600	300
May-17	22,200	11,600	10,700	21,200	10,900	10,300	1,000	700	300
Apr-17	22,500	11,800	10,700	21,400	11,000	10,300	1,100	800	300
Mar-17	22,500	11,900	10,600	21,500	11,200	10,300	1,000	700	300
Feb-17	21,800	11,300	10,500	20,900	10,700	10,200	900	600	300
Jan-17	21,700	11,100	10,500	20,700	10,600	10,100	900	500	400
Dec-16	21,900	11,200	10,700	20,900	10,700	10,200	1,000	500	500
Nov-16	22,000	11,200	10,900	20,900	10,500	10,400	1,100	700	500
Oct-16	22,200	11,200	11,000	21,000	10,500	10,500	1,200	700	500
Sep-16	21,700	11,000	10,800	20,300	10,100	10,200	1,500	900	600
Aug-16	21,700	11,000	10,700	20,100	9,900	10,200	1,600	1,100	500
Jul-16	21,400	10,900	10,600	20,100	10,000	10,100	1,300	900	400
Jun-16	21,500	10,800	10,700	20,200	10,000	10,200	1,200	700	500
May-16	20,600	10,300	10,300	19,500	9,700	9,800	1,100	600	500
Apr-16	20,500	10,400	10,100	19,200	9,700	9,500	1,300	700	500
Mar-16	20,600	10,600	10,000	19,400	9,900	9,400	1,200	700	500
Feb-16	20,900	10,900	10,000	19,600	10,100	9,500	1,300	700	500
Jan-16	20,700	10,800	9,900	19,500	10,100	9,400	1,200	700	500
Dec-15	20,700	10,800	9,800	19,600	10,100	9,500	1,100	700	400

	Unemployment rate		
	Both sexes	Males	Females
Dec-17	3.6	3.5	3.8
Nov-17	4.1	4.4	3.8
Oct-17	3.7	4.4	2.9
Sep-17	3.3	3.6	1.9
Aug-17	2.3	1.8	1.9
Jul-17	3.7	3.6	2.8
Jun-17	4.1	5.4	2.8
May-17	4.5	6.0	2.8
Apr-17	4.9	6.8	2.8
Mar-17	4.4	5.9	2.8
Feb-17	4.1	5.3	2.9
Jan-17	4.1	4.5	3.8
Dec-16	4.6	4.5	4.7
Nov-16	5.0	6.3	4.6
Oct-16	5.4	6.3	4.5
Sep-16	6.9	8.2	5.6
Aug-16	7.4	10.0	4.7
Jul-16	6.1	8.3	3.8
Jun-16	5.6	6.5	4.7
May-16	5.3	5.8	4.9
Apr-16	6.3	6.7	5.0
Mar-16	5.8	6.6	5.0
Feb-16	6.2	6.4	5.0
Jan-16	5.8	6.5	5.1
Dec-15	5.3	6.5	4.1

Unemployment Rate, 15+, Males and Females, December 2015 - December 2017



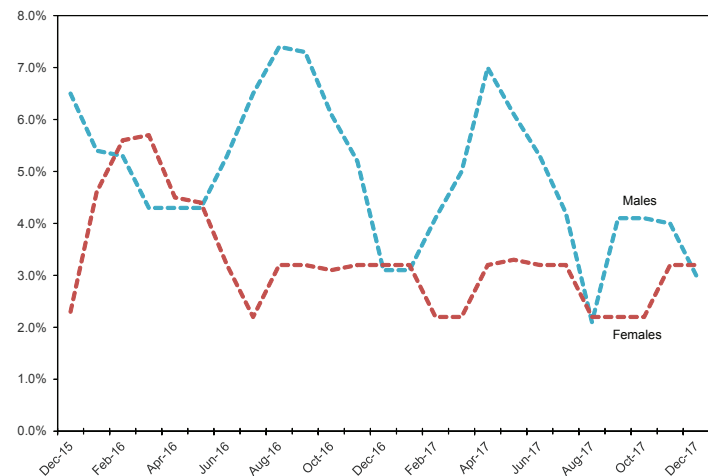
Note: Data may not add up to the totals due to rounding.

Seasonally Adjusted Labour Force, aged 25+ years, Yukon

	Labour Force			Employment			Unemployment		
	Both sexes	Males	Females	Both sexes	Males	Females	Both sexes	Males	Females
Dec-17	19,200	9,900	9,300	18,500	9,600	9,000	600	300	300
Nov-17	19,300	9,900	9,400	18,600	9,500	9,100	700	400	300
Oct-17	19,100	9,800	9,300	18,500	9,400	9,100	600	400	200
Sep-17	19,000	9,700	9,300	18,400	9,300	9,100	600	400	200
Aug-17	18,800	9,500	9,300	18,400	9,300	9,100	400	200	200
Jul-17	19,000	9,600	9,500	18,400	9,200	9,200	700	400	300
Jun-17	18,900	9,500	9,400	18,100	9,000	9,100	800	500	300
May-17	19,100	9,900	9,200	18,200	9,300	8,900	900	600	300
Apr-17	19,300	10,000	9,300	18,400	9,400	9,000	900	700	300
Mar-17	19,400	10,100	9,300	18,600	9,600	9,100	800	500	200
Feb-17	19,000	9,800	9,200	18,400	9,400	9,000	600	400	200
Jan-17	19,000	9,800	9,300	18,400	9,500	9,000	600	300	300
Dec-16	19,100	9,700	9,400	18,400	9,400	9,000	700	300	300
Nov-16	19,200	9,700	9,500	18,400	9,200	9,200	800	500	300
Oct-16	19,400	9,800	9,600	18,600	9,200	9,400	800	600	300
Sep-16	19,100	9,600	9,500	18,200	9,000	9,200	1,000	700	300
Aug-16	18,900	9,500	9,400	17,900	8,800	9,100	1,000	700	300
Jul-16	18,500	9,300	9,200	17,700	8,700	9,000	900	600	200
Jun-16	18,700	9,400	9,300	17,900	8,900	9,000	800	500	300
May-16	18,200	9,200	9,100	17,400	8,800	8,700	800	400	400
Apr-16	18,100	9,200	8,900	17,200	8,800	8,500	900	400	400
Mar-16	18,100	9,300	8,800	17,200	8,800	8,300	900	400	500
Feb-16	18,300	9,400	8,900	17,300	8,900	8,400	1,000	500	500
Jan-16	18,000	9,300	8,700	17,100	8,800	8,300	900	500	400
Dec-15	17,900	9,300	8,600	17,100	8,700	8,400	800	600	200

	Unemployment rate		
	Both sexes	Males	Females
Dec-17	3.1	3.0	3.2
Nov-17	3.6	4.0	3.2
Oct-17	3.1	4.1	2.2
Sep-17	3.2	4.1	2.2
Aug-17	2.1	2.1	2.2
Jul-17	3.7	4.2	3.2
Jun-17	4.2	5.3	3.2
May-17	4.7	6.1	3.3
Apr-17	4.7	7.0	3.2
Mar-17	4.1	5.0	2.2
Feb-17	3.2	4.1	2.2
Jan-17	3.2	3.1	3.2
Dec-16	3.7	3.1	3.2
Nov-16	4.2	5.2	3.2
Oct-16	4.1	6.1	3.1
Sep-16	5.2	7.3	3.2
Aug-16	5.3	7.4	3.2
Jul-16	4.9	6.5	2.2
Jun-16	4.3	5.3	3.2
May-16	4.4	4.3	4.4
Apr-16	5.0	4.3	4.5
Mar-16	5.0	4.3	5.7
Feb-16	5.5	5.3	5.6
Jan-16	5.0	5.4	4.6
Dec-15	4.5	6.5	2.3

Unemployment Rate, 25+, Males and Females, December 2015 - December 2017



Note: Data may not add up to the totals due to rounding.

Labour Force, *Unadjusted* and Annual, aged 15+ years, Yukon

Highlights:

- Compared to the figures for November 2017, full-time employment in December 2017 decreased by 600 to 17,700; part-time employment increased by 300 to 3,000.
- In December 2017, employment in the goods-producing sector (2,700) increased by 100 compared to November 2017. Employment in the services-producing sector (18,000) decreased by 400.
- Of all those employed in December 2017: 43.4% were public sector employees; 41.1% were private sector employees (see note on page 7); and 15.5% were self-employed.

	Labour Force			Employment			Unemployment		
	Both sexes	Males	Females	Both sexes	Males	Females	Both sexes	Males	Females
Dec-17	21,500	11,000	10,500	20,700	10,600	10,100	800	400	400
Nov-17	21,900	11,400	10,500	21,100	10,900	10,100	800	400	400
Oct-17	22,000	11,500	10,500	21,300	11,200	10,200	700	300	300
Sep-17	22,200	11,800	10,500	21,600	11,400	10,200	600	400	200
Aug-17	22,500	11,700	10,800	22,000	11,500	10,500	500	300	200
Jul-17	22,800	11,800	11,000	22,100	11,400	10,700	800	400	300
Jun-17	22,400	11,500	11,000	21,500	10,800	10,700	900	600	300
May-17	21,900	11,200	10,700	21,000	10,600	10,400	1,000	600	300
Apr-17	21,800	11,200	10,700	20,800	10,400	10,300	1,000	700	300
Mar-17	21,900	11,200	10,700	20,900	10,500	10,400	1,000	700	300
Feb-17	21,400	10,900	10,600	20,400	10,200	10,200	1,000	700	300
Jan-17	21,300	10,800	10,500	20,200	10,100	10,100	1,100	700	400
Dec-16	21,300	10,700	10,600	20,200	10,200	10,100	1,100	600	500
2017	22,000	11,400	10,600	21,200	10,800	10,300	800	500	300
2016	21,400	10,900	10,500	20,200	10,200	10,000	1,200	700	500
2015	20,700	10,900	9,800	19,400	10,200	9,200	1,300	800	500
2014	20,700	10,800	10,000	19,800	10,200	9,600	900	600	300
2013	20,400	10,500	9,900	19,300	9,800	9,500	1,100	700	400
2012	20,800	10,600	10,200	19,300	9,600	9,700	1,500	1,000	500
2011	20,500	10,600	9,900	19,400	9,900	9,500	1,100	600	500
2010	18,900	9,800	9,000	17,500	9,100	8,500	1,300	800	600
2009	18,600	9,600	9,000	17,300	8,800	8,500	1,300	900	500
2008	18,800	9,800	9,000	17,900	9,100	8,800	900	700	300

	Unemployment rate			Participation rate			Employment rate		
	Both sexes	Males	Females	Both sexes	Males	Females	Both sexes	Males	Females
Dec-17	3.7	3.6	3.8	74.1	74.8	73.4	71.4	72.1	70.6
Nov-17	3.7	3.5	3.8	75.8	78.1	73.4	73.0	74.7	70.6
Oct-17	3.2	2.6	2.9	76.1	78.8	73.4	73.7	76.7	71.3
Sep-17	2.7	3.4	1.9	77.1	80.8	73.4	75.0	78.1	71.3
Aug-17	2.2	2.6	1.9	78.1	80.7	76.1	76.4	79.3	73.9
Jul-17	3.5	3.4	2.7	79.2	81.4	77.5	76.7	78.6	75.4
Jun-17	4.0	5.2	2.7	78.0	79.3	77.5	74.9	74.5	75.4
May-17	4.6	5.4	2.8	76.6	77.8	75.4	73.4	73.6	73.2
Apr-17	4.6	6.3	2.8	76.2	77.8	75.4	72.7	72.2	72.5
Mar-17	4.6	6.3	2.8	76.8	77.8	75.9	73.3	72.9	73.8
Feb-17	4.7	6.4	2.8	75.1	75.7	75.2	71.6	70.8	72.3
Jan-17	5.2	6.5	3.8	75.0	75.5	74.5	71.1	70.6	71.6
Dec-16	5.2	5.6	4.7	75.0	74.8	75.2	71.1	71.3	71.6
2017	3.6	4.4	2.8	76.4	78.6	74.6	73.6	74.5	72.5
2016	5.6	6.4	4.8	75.6	76.2	75.0	71.4	71.3	71.4
2015	6.3	7.3	5.1	73.7	76.2	71.0	69.0	71.3	66.7
2014	4.3	5.6	3.0	74.7	76.6	73.5	71.5	72.3	70.6
2013	5.4	6.7	4.0	73.6	74.5	72.8	69.7	69.5	69.9
2012	7.2	9.4	4.9	75.6	75.7	75.6	70.2	68.6	71.9
2011	5.4	5.7	5.1	76.5	77.9	75.0	72.4	72.8	72.0
2010	6.9	8.2	6.7	73.0	74.8	70.3	67.6	69.5	66.4
2009	7.0	9.4	5.6	73.5	74.4	72.6	68.4	68.2	68.5
2008	4.8	7.1	3.3	76.1	77.8	74.4	72.5	72.2	72.7

Note: Data may not add up to the totals due to rounding.

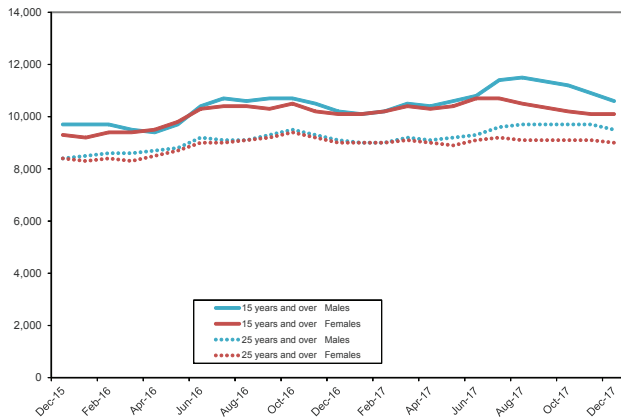
Labour Force, *Unadjusted*, by Age and Sex, December 2017

		Labour force	Employment	Unemployment	Not in labour force	Unemployment rate	Participation rate	Employment rate
Both Sexes	15 +	21,500	20,700	800	7,500	3.7	74.1	71.4
	15 - 24	2,400	2,300	200	1,900	8.3	54.5	52.3
	25 +	19,100	18,400	600	5,600	3.1	77.3	74.5
	25 - 54	13,900	13,400	500	1,400	3.6	90.8	87.6
	55 +	5,200	5,000	200	4,200	3.8	55.3	53.2
Males	15 +	11,000	10,600	400	3,600	3.6	74.8	72.1
	15 - 24	1,200	1,100	x	1,000	x	52.2	47.8
	25 +	9,800	9,500	300	2,600	3.1	79.0	76.6
	25 - 54	7,100	6,800	300	500	4.2	93.4	89.5
	55 +	2,700	2,700	x	2,100	x	56.3	56.3
Females	15 +	10,500	10,100	400	3,900	3.8	73.4	70.6
	15 - 24	1,200	1,100	x	900	x	57.1	52.4
	25 +	9,300	9,000	300	3,000	3.2	75.6	73.2
	25 - 54	6,800	6,600	200	900	2.9	88.3	85.7
	55 +	2,400	2,300	x	2,100	x	52.2	50.0

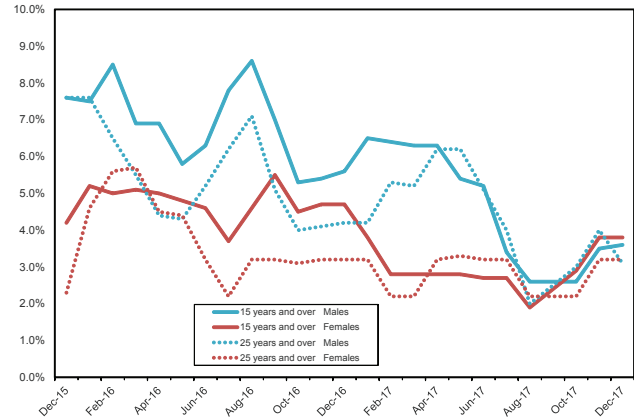
x = suppressed

Note: Data may not add up to the totals due to rounding.

Employment by Age and Sex, December 2015 - December 2017



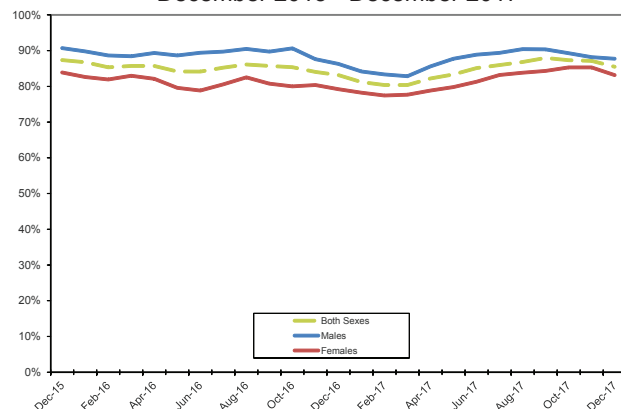
Unemployment Rate by Age and Sex, December 2015 - December 2017



- Comparing December 2017 to November 2017, the unemployment rate for males aged 15 years and over increased from 3.5% to 3.6%, and the rate for males aged 25 years and over decreased from 4.0% to 3.1%. Over the same time period, the rate for females aged 15 years remained the same at 3.8%. The rate for females aged 25 years and over also remained unchanged at 3.2%.
- The unemployment rate for Yukon's youth (aged 15-24) decreased from 7.1% in April 2017 to lower levels in May through September 2017 that led to a suppression of the rate due to the number of unemployed being less than 200. December 2017 (8.3%) is the third consecutive month since April 2017, that the number of youth unemployed has been over 200.

Employment, *Unadjusted*, by Full-time/Part-time, December 2017

Full-time employment as a percentage of all employment, December 2015 - December 2017



- Of employed Yukoners aged 15 years and over, 17,700, or 85.5%, were employed full-time in December 2017. This was the highest proportion among all other jurisdictions. Nationally, 80.2% of employed Canadians worked full-time in December 2017.
- Of employed Yukon males, 87.7% worked full-time, compared to 83.2% of employed Yukon females.
- Comparing December 2017 to November 2017, full-time employment decreased by 600 to 17,700. Part-time employment increased by 300 to 3,000.

Employment, *Unadjusted*, by Industry, December 2017

	Both sexes	Males	Females
Total employed	20,700	10,600	10,100
Goods-producing sector	2,700	2,400	400
Construction	1,800	1,600	200
Services-producing sector	18,000	8,300	9,700
Trade	2,600	1,600	1,000
Transportation and warehousing	1,000	700	200
Finance, insurance, real estate and leasing	600	300	300
Professional, scientific and technical services	800	400	500
Business, building and other support services	600	400	200
Educational services	1,800	600	1,300
Health care and social assistance	3,200	800	2,400
Information, culture and recreation	1,200	700	500
Accommodation and food services	1,500	700	800
Other services	800	300	500
Public administration	3,800	1,800	2,000

Notes:
The sum of industries does not equal sector totals as industries with fewer than 500 workers are not shown; row data may not add up to industry totals due to rounding.
'Industry' refers to the general nature of the business carried out by the employer for whom the LFS respondent works (main job only).

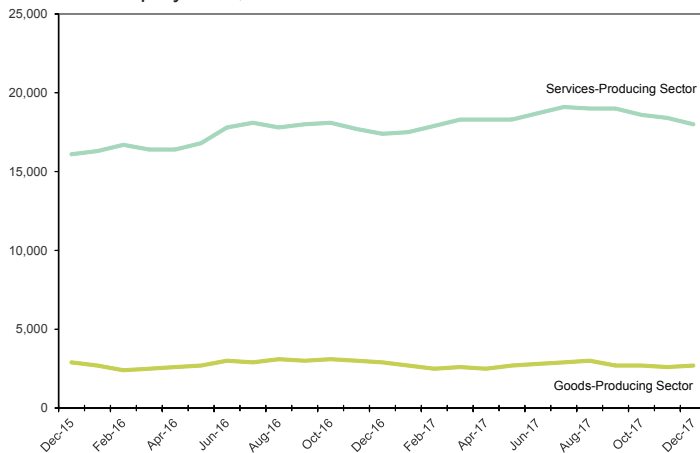
- In December 2017, 18,000, or 87.0% of working Yukoners were employed in the services-producing sector, while 2,700, or 13.0%, were employed in the goods-producing sector.
- Of Yukoners working in the goods-producing sector, 66.7% had jobs in the construction industry.
- While females accounted for 53.9% of workers in Yukon's services-producing sector, only 14.3% of the goods-producing sector workers were female.

Goods- and services-producing sectors

The goods-producing sector includes industries that are involved in extracting resources directly from the earth (e.g. farming, mining, logging) or processing the resources (e.g. utilities, construction, manufacturing). Yukon's goods-producing sector consists primarily of industries in construction and mining.

The services-producing sector includes industries involved in the provision of services.

Goods- and Services-Producing Sectors, Employment, December 2015 - December 2017



- Employment in Yukon's goods-producing sector peaked in August 2012 with 4,000 workers. Employment in the services-producing sector reached a record-high level (19,100) in July 2017.
- Comparing December 2017 to November 2017, employment in the goods-producing sector increased by 100, or 3.8%, to 2,700 and employment in the services-producing sector decreased by 400, or 2.2%, to 18,000.

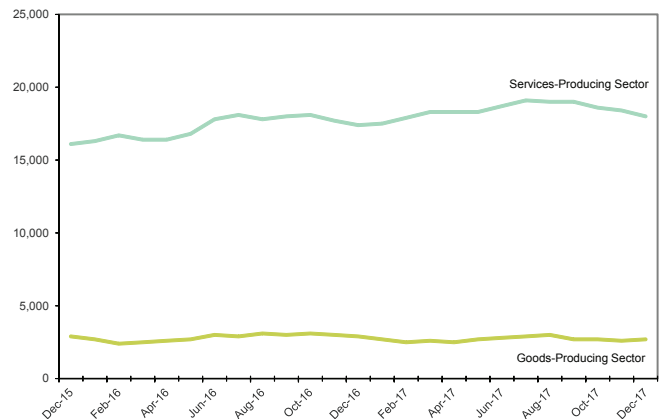
Public and Private Sectors, *Unadjusted*, December 2017

	Both sexes	Males	Females
Total Employed	20,700	10,600	10,100
Public sector employees	9,000	3,900	5,100
Total private sector	11,700	6,700	4,900
Private sector employees	8,500	4,800	3,700
Self-employed	3,200	1,900	1,200

- In December 2017, 43.5% of working Yukoners were employed by one of the four levels of government in the territory.
- In the private sector, 27.4% were self-employed.
- In December 2017, private sector employment decreased by 500, or 4.1%, to 11,700; public sector employment increased by 100, or 1.1%, to 9,000, compared to November 2017.

Notes:
'Employees' include full-time, part-time, permanent and temporary employees.
'Public employees' are those who work for: a government at the federal, provincial, territorial, municipal, First Nations or other Aboriginal government level; a government service or agency; a Crown corporation; or for a government funded establishment such as schools (including colleges/universities), hospitals and public libraries.
'Private employees' include all employees who work for private firms or businesses.

Public/Private Sector Employment, December 2015 - December 2017



Labour Force Survey Definitions

Employment — Employed persons are those who, during the reference week, did any work for pay or profit, or had a job and were absent from work.

Employment rate — Also referred to as “employment/population ratio,” it is the number of employed persons expressed as a percentage of the population aged 15 years and over. The employment rate for a particular group (for example, women aged 25 years and over) is the number employed in that group expressed as a percentage of the population for that group.

Goods-Producing Industries — Goods-Producing Industries (or goods sector, or goods industries): includes agriculture, other primary industries (forestry; fishing and trapping; mines, quarries and oil wells), manufacturing, construction and utilities (electric power, gas and water).

Labour force — The labour force is the civilian non-institutional population 15 years of age and over who, during the survey reference week, were employed or unemployed.

Not in the labour force — Persons not in the labour force are those who, during the reference week, were unwilling or unable to offer or supply labour services under conditions existing in their labour markets; that is, they were neither employed nor unemployed.

Participation rate — The participation rate is the total labour force expressed as a percentage of the population aged 15 years and over. The participation rate for a particular group (for example, women aged 25 years and over) is the labour force in that group expressed as a percentage of the population for that group.

Reference Week — The reference week is the entire calendar week (from Sunday to Saturday) covered by the Labour Force Survey each month. It is usually the week containing the 15th day of the month. The interviews are conducted during the following week, called the Survey Week, and the labour force status determined is that of the reference week.

Seasonal adjustment — Fluctuations in economic time series are caused by seasonal, cyclical and irregular movements. A seasonally adjusted series is one from which seasonal movements have been eliminated. Seasonal movements are defined as those that are caused

by regular annual events such as climate, holidays, vacation periods and cycles related to crops, production and retail sales associated with Christmas and Easter. It should be noted that the seasonally adjusted series contain irregular as well as longer-term cyclical fluctuations.

Self-employed — There are two broad categories of workers: those who work for others and those who work for themselves, namely, the self-employed. The self-employed includes working owners of incorporated businesses, working owners of unincorporated businesses and other self-employed.

Service-Producing Industries — Service-Producing Industries (or service sector, or service industries): includes trade; transportation and warehousing; finance, insurance, real estate and leasing; professional, scientific and technical services; management, administrative and other support; educational services; health care and social assistance; information, culture and recreation; accommodation and food services; other services; and public administration.

Three-Month Moving Average — All monthly figures for the Territories, whether seasonally adjusted or unadjusted, are three-month moving averages – for example, the March 2011 unemployment rate of 4.5% is actually an average of the unemployment rates for the months of January, February and March. April’s unemployment rate became the average of the rates for February, March and April. Because they are three-month moving averages, the Territories’ figures are not included in the calculation of Canada’s numbers.

Unemployment — Unemployed persons are those who, during the reference week, were available for work and were either on temporary layoff, had looked for work in the past four weeks, or had a job to start within the next four weeks.

Unemployment rate — The unemployment rate is the number of unemployed persons expressed as a percentage of the labour force. The unemployment rate for a particular group (age, sex, marital status, etc.) is the number unemployed in that group expressed as a percentage of the labour force for that group.

Info sheet no. 35 – January 2018
Next release date: February 12, 2018

Additional information
Government of Yukon
Finance

Bureau of Statistics (B-4)
Box 2703, Whitehorse, Yukon Y1A 2C6
Telephone: (867) 667-5640; Fax: (867) 393-6203
email: ybsinfo@gov.yk.ca
website: <http://www.eco.gov.yk.ca/stats/ybs.html>