

YUKON BUREAU OF STATISTICS



Yukon Employment January 2012

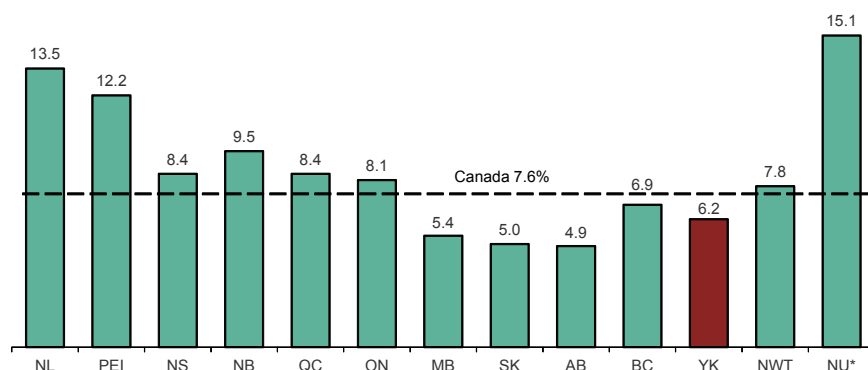
Highlights:

- Yukon's January unemployment rate at 6.2% increased 0.9 percentage points from December. The national unemployment rate increased to 7.6%.
- Yukon's labour force increased by 100 from December to a record-high 20,900.
- Employment in the territory was of 19,600 in January, down slightly from the record-high December '11 figure of 19,700.

January 2012 Yukon Employment at a Glance

Labour force.....	20,900
Employed.....	19,600
Unemployed	1,300
Unemployment Rate.....	6.2%

Unemployment Rate, Provinces and Territories, January '12



*Nunavut's unemployment rate is available only as an unadjusted estimate.

What's Inside:

Overview.....	1
Comparisons with Canada	2
Seasonally Adjusted, 15+	3
Seasonally Adjusted, 25+	4
Seasonally Unadjusted, 15+	5
Age, Full Time and Part Time	6
Industry and Class of Worker	7
Definitions	8

- Yukon's January labour force saw record highs; however, not all entrants were able to find jobs, bumping the unemployment rate up to 6.2%.
- Canada-wide, employment remained virtually unchanged in January, increasing by just 2,300 workers compared to December.
- Nationally, there were employment gains in educational services; and information, culture and recreation in January. Declines were seen in professional, scientific and technical services; and in finance, insurance, real estate and leasing. All other industries showed little employment change.

Other Sources of Labour Market Information:

Statistics Canada's Daily Release - a summary of the current Labour Force Survey numbers from across Canada. <http://www.statcan.gc.ca/daily-quotidien/120203/dq120203a-eng.htm>

Yukon Survey of Employment, Payrolls and Hours - detailed annual information on number of paid employees, payrolls, and hours worked. Based on a combination of administrative data from Canada Revenue Agency and results from the Business Payroll Survey. www.eco.gov.yk.ca/stats/pdf/seph_2010.pdf

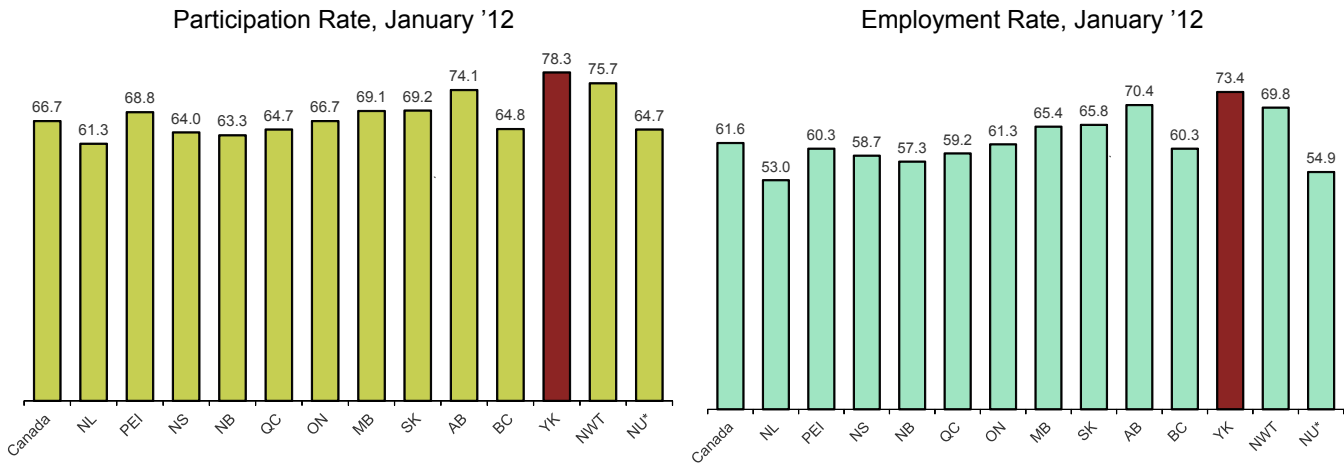
Yukon's 2006 Census Labour Publication - Broad snapshot

of Yukon in May, 2006. Includes information on Yukon communities, employee occupation and employer industry. www.eco.gov.yk.ca/stats/pdf/2006_labour.pdf

Yukon 2010 Business Survey - Yukon businesses' vacancies (by occupation and industry) and challenges recruiting staff. www.eco.gov.yk.ca/stats/pdf/2010_Business_Survey_Report.pdf

Yukon Employment Annual Review - Annual summary of Yukon Labour Force Survey data; includes Aboriginal/Non-aboriginal and Rural/Whitehorse data. www.eco.gov.yk.ca/stats/pdf/employment_2009.pdf

Comparisons with Canada - Snapshot



*Nunavut's participation rate and employment rate are available only as unadjusted estimates.

The participation rate measures the percent of the population which is working or actively looking for work. Yukon's participation rate in January 2012 was 78.3%, highest in Canada.

Yukon's January employment rate (which measures the percent of the population which is employed), at 73.4%, is also the highest in Canada, due to the effects of a combination of a high participation rate and a relatively low number of unemployed.

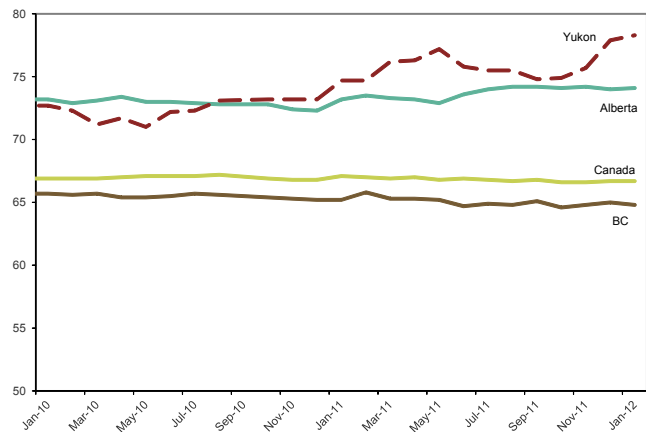
Comparisons with Canada - Historical

The Labour Force Survey estimates that 78.3% of Yukoners age 15 and over are employed or are seeking employment. This percentage is up from 74.7% in January 2011.

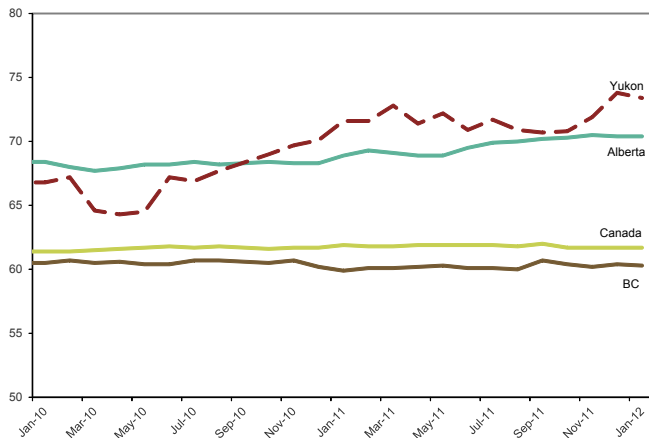
Yukon's participation rate began to decline in June 2011 as the percentage of Yukoners participating in the labour force declined for several months before rebounding in the fall/winter of 2011/12. January's rate of 78.3% is the highest it has been since June of 2002.

Yukon's labour market in terms of participation rate and employment rate tends to be similar to Alberta's; however, as is often the case with a small population base, our rates show a higher degree of volatility.

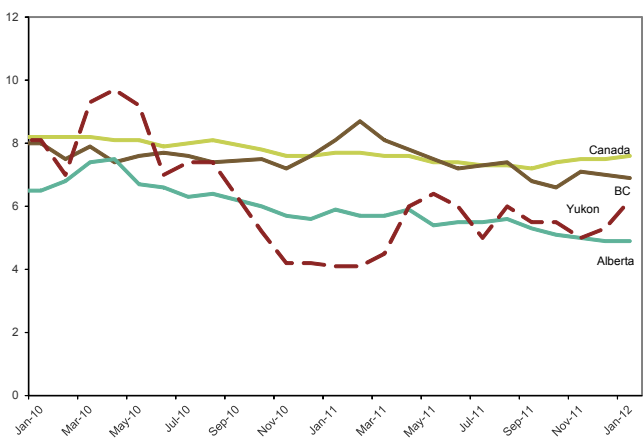
Participation Rate, Jan '10 - Jan '12



Employment Rate, Jan '10 - Jan '12



Unemployment Rate, Jan '10 - Jan '12

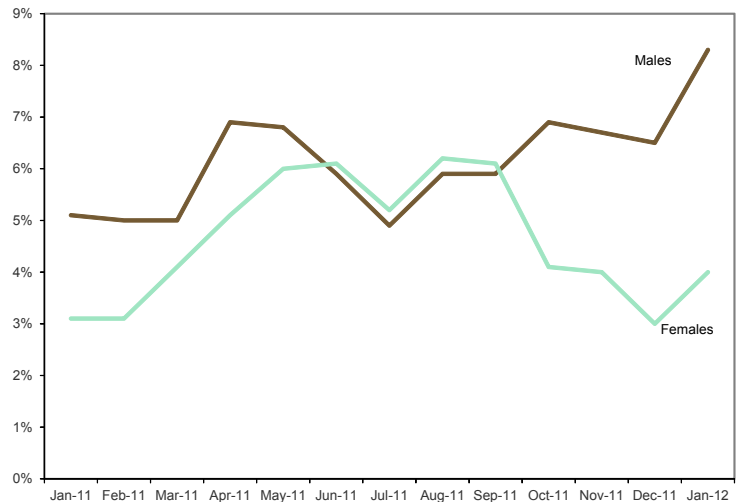


Seasonally Adjusted Labour Force, age 15+

	Labour Force			Employment			Unemployment		
	Both sexes	Males	Females	Both sexes	Males	Females	Both sexes	Males	Females
Jan-12	20,900	10,800	10,100	19,600	9,900	9,700	1,300	900	400
Dec-11	20,800	10,700	10,100	19,700	10,000	9,800	1,100	700	300
Nov-11	20,200	10,400	9,900	19,200	9,700	9,500	1,000	700	400
Oct-11	20,000	10,200	9,800	18,900	9,500	9,400	1,100	700	400
Sep-11	19,900	10,100	9,800	18,800	9,500	9,200	1,100	600	600
Aug-11	20,000	10,200	9,700	18,800	9,700	9,200	1,200	600	600
Jul-11	20,000	10,200	9,700	19,000	9,700	9,300	1,000	500	500
Jun-11	20,100	10,200	9,900	18,800	9,500	9,300	1,200	600	600
May-11	20,300	10,300	10,000	19,000	9,600	9,400	1,300	700	600
Apr-11	20,000	10,100	9,900	18,700	9,400	9,300	1,200	700	500
Mar-11	19,900	10,100	9,700	19,000	9,600	9,400	900	500	400
Feb-11	19,500	10,000	9,600	18,700	9,400	9,300	800	500	300
Jan-11	19,500	9,900	9,600	18,700	9,400	9,300	800	500	300
Dec-10	19,100	9,800	9,300	18,300	9,300	9,000	800	500	300
Nov-10	19,100	9,700	9,400	18,200	9,200	9,000	800	500	400
Oct-10	19,100	9,700	9,300	18,000	9,100	8,900	1,000	600	400
Sep-10	19,300	9,900	9,500	18,000	9,100	8,800	1,400	700	600
Aug-10	19,000	9,800	9,200	17,600	9,000	8,600	1,400	800	600
Jul-10	18,800	9,700	9,100	17,400	9,000	8,500	1,400	800	600
Jun-10	18,700	9,800	8,900	17,400	9,100	8,300	1,300	800	600
May-10	18,400	9,600	8,700	16,700	8,800	7,900	1,700	800	800
Apr-10	18,500	9,700	8,800	16,600	8,700	7,900	1,800	900	900
Mar-10	18,300	9,600	8,700	16,600	8,600	8,000	1,700	1,000	700
Feb-10	18,500	9,700	8,800	17,200	8,800	8,300	1,300	800	500
Jan-10	18,600	9,800	8,800	17,100	8,900	8,200	1,500	900	500

	Unemployment rate		
	Both sexes	Males	Females
Jan-12	6.2	8.3	4.0
Dec-11	5.3	6.5	3.0
Nov-11	5.0	6.7	4.0
Oct-11	5.5	6.9	4.1
Sep-11	5.5	5.9	6.1
Aug-11	6.0	5.9	6.2
Jul-11	5.0	4.9	5.2
Jun-11	6.0	5.9	6.1
May-11	6.4	6.8	6.0
Apr-11	6.0	6.9	5.1
Mar-11	4.5	5.0	4.1
Feb-11	4.1	5.0	3.1
Jan-11	4.1	5.1	3.1
Dec-10	4.2	5.1	3.2
Nov-10	4.2	5.2	4.3
Oct-10	5.2	6.2	4.3
Sep-10	7.3	7.1	6.3
Aug-10	7.4	8.2	6.5
Jul-10	7.4	8.2	6.6
Jun-10	7.0	8.2	6.7
May-10	9.2	8.3	9.2
Apr-10	9.7	9.3	10.2
Mar-10	9.3	10.4	8.0
Feb-10	7.0	8.2	5.7
Jan-10	8.1	9.2	5.7

Unemployment Rate, 15+, Males and Females, Jan '11 - Jan '12

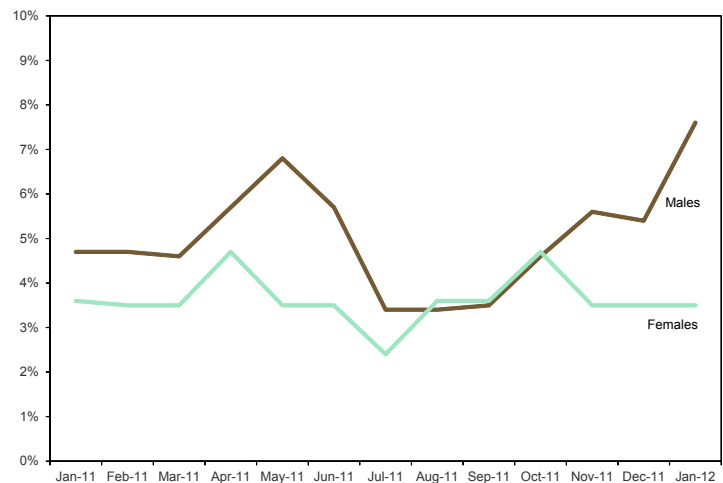


Seasonally Adjusted Labour Force, age 25+

	Labour Force			Employment			Unemployment		
	Both sexes	Males	Females	Both sexes	Males	Females	Both sexes	Males	Females
Jan-12	17,700	9,200	8,500	16,700	8,500	8,200	1,000	700	300
Dec-11	17,800	9,200	8,600	17,100	8,700	8,400	800	500	300
Nov-11	17,600	9,000	8,600	16,800	8,500	8,300	800	500	300
Oct-11	17,200	8,700	8,500	16,400	8,300	8,100	800	400	400
Sep-11	17,000	8,600	8,400	16,300	8,300	8,000	700	300	300
Aug-11	17,000	8,700	8,300	16,400	8,400	8,000	600	300	300
Jul-11	17,000	8,700	8,300	16,500	8,400	8,100	500	300	200
Jun-11	17,200	8,800	8,500	16,400	8,200	8,100	800	500	300
May-11	17,400	8,800	8,500	16,500	8,300	8,200	900	600	300
Apr-11	17,200	8,700	8,500	16,300	8,200	8,100	900	500	400
Mar-11	17,200	8,700	8,500	16,600	8,300	8,300	600	400	300
Feb-11	17,000	8,600	8,500	16,400	8,200	8,200	700	400	300
Jan-11	16,900	8,500	8,400	16,300	8,100	8,100	600	400	300
Dec-10	16,300	8,300	8,000	15,600	7,900	7,700	700	400	300
Nov-10	16,300	8,200	8,100	15,500	7,800	7,800	700	400	300
Oct-10	16,300	8,200	8,100	15,400	7,600	7,800	900	600	300
Sep-10	16,400	8,300	8,100	15,300	7,600	7,600	1,100	600	500
Aug-10	16,100	8,200	7,800	14,900	7,600	7,400	1,100	700	500
Jul-10	16,000	8,200	7,800	14,700	7,500	7,200	1,200	700	600
Jun-10	15,800	8,100	7,700	14,700	7,500	7,200	1,100	600	500
May-10	15,500	8,000	7,500	14,200	7,300	6,900	1,300	700	600
Apr-10	15,600	8,000	7,500	14,100	7,300	6,800	1,500	800	700
Mar-10	15,500	8,000	7,500	14,100	7,200	6,900	1,400	800	600
Feb-10	15,800	8,000	7,700	14,600	7,300	7,300	1,100	800	400
Jan-10	15,700	8,100	7,700	14,600	7,300	7,300	1,200	800	400

	Unemployment rate		
	Both sexes	Males	Females
Jan-12	5.6	7.6	3.5
Dec-11	4.5	5.4	3.5
Nov-11	4.5	5.6	3.5
Oct-11	4.7	4.6	4.7
Sep-11	4.1	3.5	3.6
Aug-11	3.5	3.4	3.6
Jul-11	2.9	3.4	2.4
Jun-11	4.7	5.7	3.5
May-11	5.2	6.8	3.5
Apr-11	5.2	5.7	4.7
Mar-11	3.5	4.6	3.5
Feb-11	4.1	4.7	3.5
Jan-11	3.6	4.7	3.6
Dec-10	4.3	4.8	3.8
Nov-10	4.3	4.9	3.7
Oct-10	5.5	7.3	3.7
Sep-10	6.7	7.2	6.2
Aug-10	6.8	8.5	6.4
Jul-10	7.5	8.5	7.7
Jun-10	7.0	7.4	6.5
May-10	8.4	8.8	8.0
Apr-10	9.6	10.0	9.3
Mar-10	9.0	10.0	8.0
Feb-10	7.0	10.0	5.2
Jan-10	7.6	9.9	5.2

Unemployment Rate, 25+, Males and Females, Jan '11 - Jan '12



Labour Force, *Unadjusted* and Annual, 15+

'Seasonally adjusted' refers to the technique of adjusting figures to remove seasonal movements. As such, seasonally adjusted employment figures are widely used and quoted, as they are considered to be a more accurate picture of the current employment situation than unadjusted figures. Some variables, however, are only available on an unadjusted basis. Comparisons between adjusted and unadjusted should not be made. For more information, see [definitions on pg 8](#).

	Labour Force			Employment			Unemployment		
	Both sexes	Males	Females	Both sexes	Males	Females	Both sexes	Males	Females
Jan-12	20,400	10,400	10,000	19,100	9,500	9,600	1,300	900	400
Dec-11	20,400	10,400	10,000	19,400	9,700	9,600	1,000	700	300
Nov-11	20,200	10,300	9,900	19,200	9,700	9,500	1,000	600	400
Oct-11	20,200	10,400	9,800	19,200	9,800	9,400	1,000	600	400
Sep-11	20,400	10,400	10,000	19,400	10,000	9,400	1,000	400	600
Aug-11	20,600	10,700	9,900	19,600	10,200	9,300	1,000	500	600
Jul-11	20,600	10,700	9,900	19,600	10,200	9,400	900	500	500
Jun-11	20,500	10,600	9,900	19,200	9,800	9,300	1,300	700	600
May-11	20,400	10,400	9,900	18,900	9,600	9,300	1,500	900	600
Apr-11	19,800	10,000	9,800	18,300	9,100	9,300	1,500	900	500
Mar-11	19,500	9,800	9,600	18,500	9,200	9,300	1,000	700	400
Feb-11	19,100	9,600	9,500	18,200	9,000	9,200	900	600	300
Jan-11	19,000	9,500	9,500	18,300	9,000	9,200	800	500	300
2011	20,200	10,300	9,900	19,100	9,700	9,400	1,100	600	500
2010	18,900	9,800	9,100	17,500	9,000	8,500	1,300	800	600
2009	18,700	9,600	9,100	17,300	8,700	8,600	1,300	900	500
2008	18,900	9,800	9,100	18,000	9,100	8,900	900	700	300
2007	18,100	9,400	8,800	17,200	8,800	8,400	900	600	300
2006	18,200	9,500	8,700	17,400	9,000	8,400	800	500	200
2005	18,100	9,200	8,800	17,200	8,600	8,600	900	600	300
2004	17,800	8,900	8,900	16,700	8,200	8,500	1,100	700	400
2003	16,900	8,500	8,400	15,200	7,500	7,700	1,700	1,100	600
2002	16,900	8,600	8,300	15,200	7,500	7,800	1,600	1,100	500

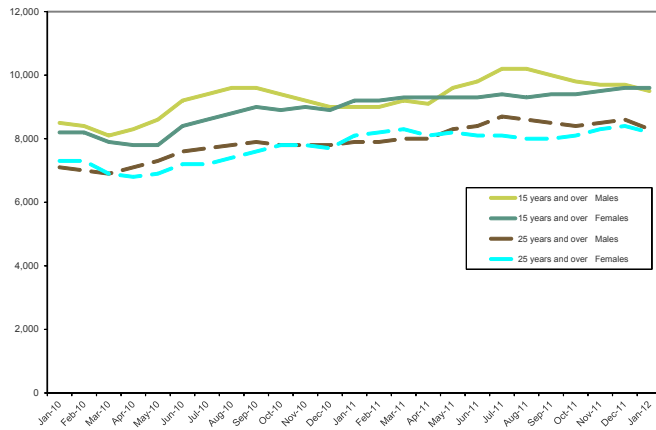
	Unemployment rate			Participation rate			Employment rate		
	Both sexes	Males	Females	Both sexes	Males	Females	Both sexes	Males	Females
Jan-12	6.4	8.7	4.0	76.4	77.6	75.2	71.5	70.9	72.2
Dec-11	4.9	6.7	3.0	76.4	77.6	75.2	72.7	72.4	72.2
Nov-11	5.0	5.8	4.0	75.7	76.9	74.4	71.9	72.4	71.4
Oct-11	5.0	5.8	4.1	75.7	77.6	74.2	71.9	73.1	71.2
Sep-11	4.9	3.8	6.0	76.7	77.6	75.8	72.9	74.6	71.2
Aug-11	4.9	4.7	6.1	77.7	79.9	75.0	74.0	76.1	70.5
Jul-11	4.4	4.7	5.1	77.7	80.5	75.0	74.0	76.7	71.2
Jun-11	6.3	6.6	6.1	77.4	79.7	75.6	72.5	73.7	71.0
May-11	7.4	8.7	6.1	77.6	78.2	75.6	71.9	72.2	71.0
Apr-11	7.6	9.0	5.1	75.6	75.8	75.4	69.8	68.9	71.5
Mar-11	5.1	7.1	4.2	74.7	74.8	73.8	70.9	70.2	71.5
Feb-11	4.7	6.3	3.2	73.2	73.3	73.1	69.7	68.7	70.8
Jan-11	4.2	5.3	3.2	72.8	72.5	73.1	70.1	68.7	70.8
2011	5.4	5.8	5.1	76.2	77.4	75.0	72.1	72.9	71.2
2010	6.9	8.2	6.6	72.7	74.8	70.5	67.3	68.7	65.9
2009	7.0	9.4	5.5	73.9	75.0	72.8	68.4	68.0	68.8
2008	4.8	7.1	3.3	75.9	77.8	74.0	72.3	72.2	72.4
2007	5.0	6.4	3.4	74.2	76.4	73.3	70.5	71.5	70.0
2006	4.4	5.3	2.3	75.8	77.9	73.1	72.5	73.8	70.6
2005	5.0	6.5	3.4	76.4	76.7	75.2	72.6	71.7	73.5
2004	6.2	7.9	4.5	76.7	76.1	77.4	72.0	70.1	73.9
2003	10.1	12.9	7.1	74.4	74.6	74.3	67.0	65.8	68.1
2002	9.5	12.8	6.0	76.5	77.5	75.5	68.8	67.6	70.9

Labour Force, *Unadjusted*, by Age and Sex, January '12

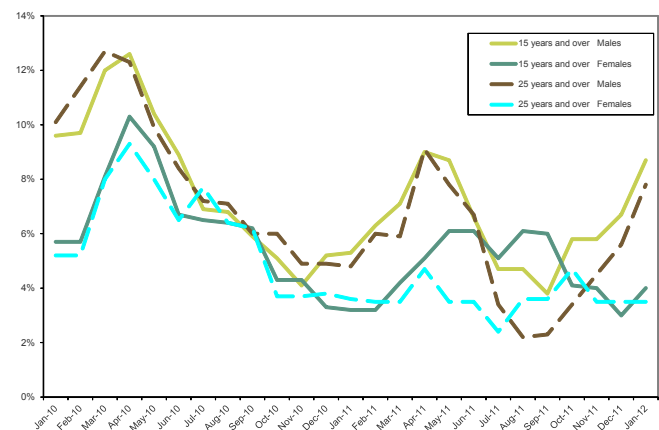
		Labour force	Employment	Unemployment	Not in labour force	Unemployment rate	Participation rate	Employment rate
Both Sexes	15 +	20,400	19,100	1,300	6,300	6.4	76.4	71.5
	15 - 24	2,900	2,600	300	1,400	10.3	65.9	59.1
	25 +	17,500	16,500	1,000	4,900	5.7	78.1	73.7
	25 - 54	13,300	12,500	800	1,800	6.0	88.1	82.8
	55 +	4,200	4,000	200	3,000	4.8	57.5	54.8
Males	15 +	10,400	9,500	900	3,000	8.7	77.6	70.9
	15 - 24	1,400	1,200	200	800	14.3	60.9	52.2
	25 +	9,000	8,300	700	2,200	7.8	80.4	74.1
	25 - 54	6,500	6,000	500	800	7.7	89.0	82.2
	55 +	2,400	2,300	200	1,400	8.3	63.2	60.5
Females	15 +	10,000	9,600	400	3,300	4.0	75.2	72.2
	15 - 24	1,500	1,400	x	600	x	71.4	66.7
	25 +	8,500	8,200	300	2,700	3.5	75.9	73.2
	25 - 54	6,700	6,500	200	1,000	3.0	85.9	83.3
	55 +	1,800	1,700	x	1,600	x	52.9	50.0

x = suppressed for confidentiality

Employment by Age and Sex, Jan '10 - Jan '12

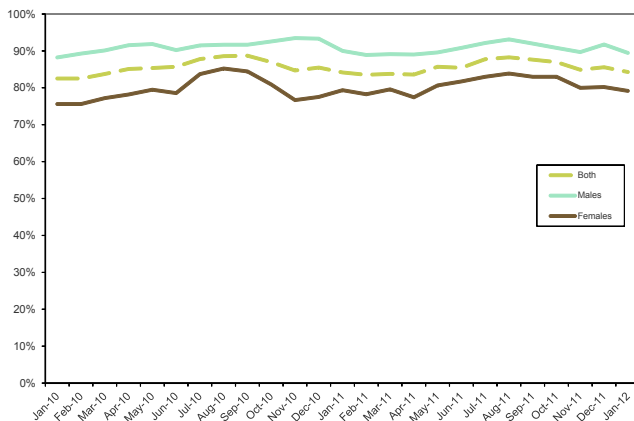


Unemployment Rate by Age and Sex, Jan '10 - Jan '12



Unadjusted, Full-time and Part-time Workers, January '12

Full-time employment as a percentage of all employment Age 15+, Jan '10 - Jan '12



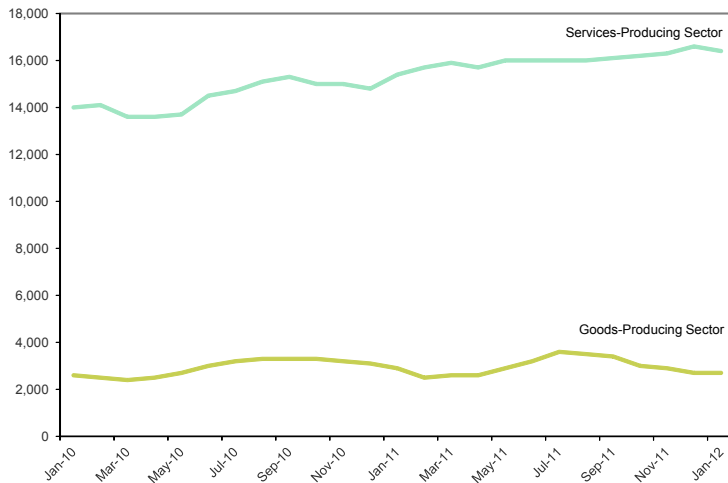
- The unemployment rate increased for Males 15+ and 25+ and also increased for Females 15+ and remained the same for Females 25+ compared to December.
- 16,100, or 84%, of Yukon's 15+ workers were full-time in January. In the past two years, this percentage has fluctuated between 83% and 89%.
- 79% of employed females held full-time employment, while 90% of males did.
- Nationally, 80% of employed Canadians worked full time in January; Newfoundland and Labrador, BC, NWT and Nunavut had a higher percentage of full-time workers than Yukon in January.

Employment, *Unadjusted*, by Industry, January '12

	Both sexes	Males	Females
Total employed	19,100	9,500	9,600
Goods-producing sector	2,700	2,500	200
Forestry, fishing, mining, oil and gas	600	500	-
Construction	1,800	1,700	-
Services-producing sector	16,400	7,000	9,400
Trade	2,400	1,100	1,300
Transportation and warehousing	800	700	200
Finance, insurance, real estate & leasing	900	400	400
Professional, scientific and technical services	1,200	800	400
Business, building and other support services	300	-	200
Educational services	1,400	500	900
Health care and social assistance	2,300	500	1,800
Information, culture and recreation	1,300	700	600
Accommodation and food services	1,000	200	800
Other Services	900	400	500
Public administration	3,800	1,600	2,200

- 16,400, or 86% of Yukoners were employed in the service-producing sector in January.
- 67% of Yukoners working in the goods-producing sector had jobs in the construction industry.
- While females accounted for 57% of workers in Yukon's services-producing sector, only 7% of goods-producing sector workers were female.
- Employment in the goods-producing sector is down by 7% from last January to 2,700; employment in the services-producing sector is up by 6% to 16,400.

Goods and Services-Producing Sectors, Employment, Jan '10 - Jan '12



Goods and services producing sectors

The goods-producing sector includes those industries that are involved in extracting resources directly from the earth (e.g. farming, mining, logging) or processing the resources (e.g. utilities, construction, manufacturing). Yukon's goods-producing sector are industries primarily in construction and mining.

The services-producing sector includes industries involved in the provision of services.

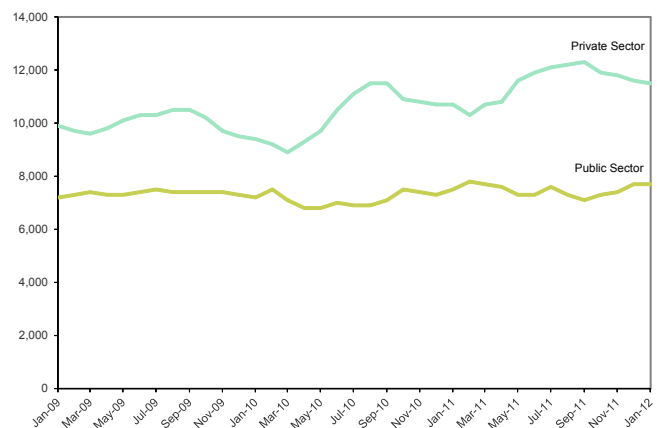
Public and Private Sectors, *Unadjusted*, January '12

	Both sexes	Males	Females
Total Employed	19,100	9,500	9,600
Public employees	7,700	3,000	4,700
Total private sector	11,500	6,400	5,000
Private employees	8,500	4,400	4,000
Self-employed	3,000	2,000	1,000

Note: 'Public employees' includes federal, territorial, First Nation and municipal employees.

- In December 40% of working Yukoners were employed by one of the four levels of government in the territory.
- Of the private sector, 26% were self-employed.
- Public sector employment increased by 3% compared to last January, while private sector employment is up by 8% from last January.

Public/Private Sector Employment, Jan '08 - Jan '12



Labour Force Survey Definitions

Employment — Employed persons are those who, during the reference week, did any work for pay or profit, or had a job and were absent from work.

Employment rate — Also referred to as “employment/population ratio,” it is the number of employed persons expressed as a percentage of the population aged 15 years and over. The employment rate for a particular group (for example, women aged 25 years and over) is the number employed in that group expressed as a percentage of the population for that group.

Goods-Producing Industries — Goods-Producing Industries (or goods sector, or goods industries): includes agriculture, other primary industries (forestry; fishing and trapping; mines, quarries and oil wells), manufacturing, construction and utilities (electric power, gas and water).

Labour force — The labour force is the civilian non-institutional population 15 years of age and over who, during the survey reference week, were employed or unemployed.

Not in the labour force — Persons not in the labour force are those who, during the reference week, were unwilling or unable to offer or supply labour services under conditions existing in their labour markets; that is, they were neither employed nor unemployed.

Participation rate — The participation rate is the total labour force expressed as a percentage of the population aged 15 years and over. The participation rate for a particular group (for example, women aged 25 years and over) is the labour force in that group expressed as a percentage of the population for that group.

Reference Week — The reference week is the entire calendar week (from Sunday to Saturday) covered by the Labour Force Survey each month. It is usually the week containing the 15th day of the month. The interviews are conducted during the following week, called the Survey Week, and the labour force status determined is that of the reference week.

Seasonal adjustment — Fluctuations in economic time series are caused by seasonal, cyclical and irregular movements. A seasonally adjusted series is one from which seasonal movements have been eliminated. Seasonal

movements are defined as those that are caused by regular annual events such as climate, holidays, vacation periods and cycles related to crops, production and retail sales associated with Christmas and Easter. It should be noted that the seasonally adjusted series contain irregular as well as longer-term cyclical fluctuations.

Self-employed — There are two broad categories of workers: those who work for others and those who work for themselves, namely, the self-employed. The self-employed includes working owners of incorporated businesses, working owners of unincorporated businesses and other self-employed.

Service-Producing Industries — Service-Producing Industries (or service sector, or service industries): includes trade; transportation and warehousing; finance, insurance, real estate and leasing; professional, scientific and technical services; management, administrative and other support; educational services; health care and social assistance; information, culture and recreation; accommodation and food services; other services; and public administration.

Three-Month Moving Average — All monthly figures for the Territories, whether seasonally adjusted or unadjusted, are three-month moving averages – for example, the March 2011 unemployment rate of 4.5% is actually an average of the unemployment rates for the months of January, February and March. April’s unemployment rate became the average of the rates for February, March and April. Because they are three-month moving averages, the Territories’ figures are not included in the calculation of Canada’s numbers.

Unemployment — Unemployed persons are those who, during the reference week, were available for work and were either on temporary layoff, had looked for work in the past four weeks, or had a job to start within the next four weeks.

Unemployment rate — The unemployment rate is the number of unemployed persons expressed as a percentage of the labour force. The unemployment rate for a particular group (age, sex, marital status, etc.) is the number unemployed in that group expressed as a percentage of the labour force for that group.

Information sheet no. 34.233 – February 2012
Next release date: March 12, 2012