

# YUKON BUREAU OF STATISTICS

2 ÷ 9 # 1 \$ > 0 - 2 + 6 3 ± 8 < 3 π 7 4 5 ≠ 9 ≈ 1 ∞ ^

## Yukon Employment October 2013

### Highlights:

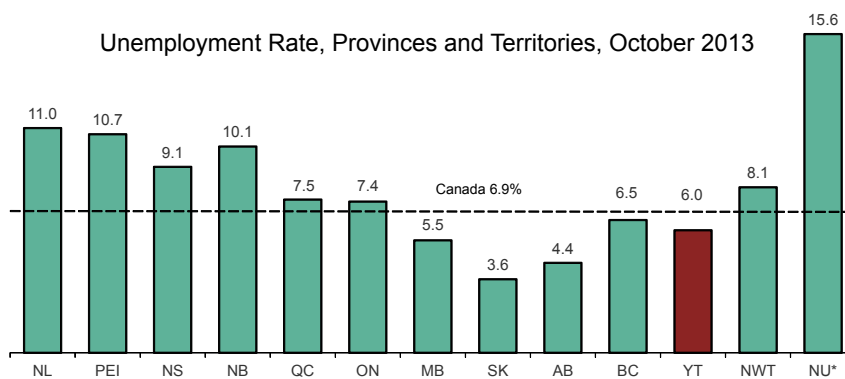
- Yukon's October 2013 unemployment rate was 6.0%, an increase of 0.5 percentage points compared to September 2013.
- Compared to September 2013, Yukon's labour force remained unchanged at 20,100, while the number of employed increased by 100 and the number of unemployed increased by 100.

Note: Throughout this publication, rounded data may not sum to totals.

#### October 2013 Yukon Employment at a Glance

Labour force.....	20,100
Employed.....	19,000
Unemployed .....	1,200
Unemployment Rate .....	6.0%

Unemployment Rate, Provinces and Territories, October 2013



\*Nunavut's unemployment rate is available only as an unadjusted estimate.

- Nationally, comparing October 2013 to September 2013 figures, there was a slight increase in both the labour force (0.1%) and the number of employed (0.1%).
- The number of unemployed in Canada remained the same at 1,325,000, with the resulting unemployment rate remaining unchanged at 6.9%.

### What's Inside:

Overview.....	1
Comparisons with Canada .....	2
Seasonally Adjusted, 15+ .....	3
Seasonally Adjusted, 25+ .....	4
Unadjusted, 15+ .....	5
Age, Full-time and Part-time .....	6
Industry and Class of Worker .....	7
Definitions .....	8

Seasonally adjusted refers to the technique of adjusting figures to remove seasonal movements. As such, seasonally adjusted employment figures are widely used and quoted, as they are considered to be a more accurate picture of the current employment situation than unadjusted figures. Some variables, however, are only available on an unadjusted basis. Comparisons between adjusted and unadjusted figures should not be made. For more information, see [definitions on page 8](#).

Unadjusted figures are available on page 5.

### Other Sources of Labour Market Information:

**Statistics Canada's Daily Release** - a summary of the current Labour Force Survey numbers from across Canada. <http://www.statcan.gc.ca/daily-quotidien/131108/dq131108a-eng.htm>

**Yukon Employment Annual Review** - Annual summary of Yukon Labour Force Survey data; includes Aboriginal/Non-aboriginal and Rural/Whitehorse data. [http://www.eco.gov.yk.ca/stats/pdf/employment\\_2012.pdf](http://www.eco.gov.yk.ca/stats/pdf/employment_2012.pdf)

**Yukon Survey of Employment, Payrolls and Hours** - detailed annual information on number of paid employees, payrolls, and hours worked. Based on a combination

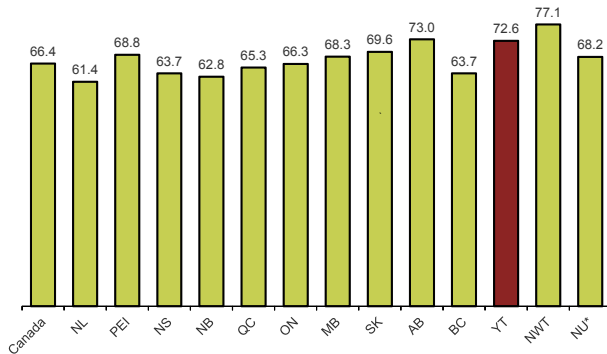
of administrative data from Canada Revenue Agency and results from the Business Payroll Survey. [http://www.eco.gov.yk.ca/stats/pdf/seph\\_2012.pdf](http://www.eco.gov.yk.ca/stats/pdf/seph_2012.pdf)

**Yukon 2010 Business Survey** - Yukon businesses' vacancies (by occupation and industry) and challenges recruiting staff. [http://www.eco.gov.yk.ca/stats/pdf/2010\\_Business\\_Survey\\_Report.pdf](http://www.eco.gov.yk.ca/stats/pdf/2010_Business_Survey_Report.pdf)

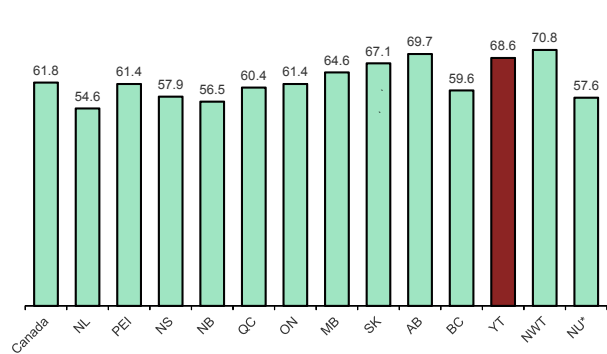
**Statistics Canada's 2011 National Household Survey** - summary information on Yukon in May 2011. <http://www12.statcan.gc.ca/nhs-enm/2011/as-sa/fogs-spg/Pages/FOG.cfm?lang=E&level=2&GeoCode=60>

# Comparisons with Canada - Snapshot

Participation Rate, October 2013



Employment Rate, October 2013



\*Nunavut's participation rate and employment rate are available only as unadjusted estimates.

The participation rate measures the percent of the population which is working or actively looking for work. Yukon's participation rate in October 2013 was 72.6%, the third highest in Canada.

Yukon's October employment rate (the percent of the population which is employed), at 68.6%, is also the third highest in Canada.

# Comparisons with Canada - Historical

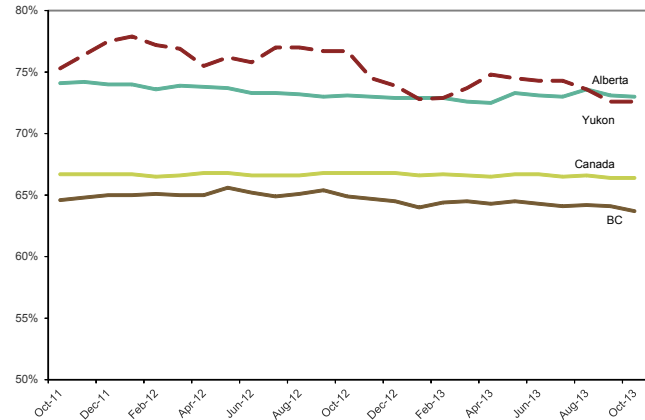
The Labour Force Survey estimates that 72.6% of Yukoners aged 15 and over were employed or were seeking employment in October 2013.

Yukon's participation rate in September and October (72.6%) is the lowest since July of 2010 (72.3%).

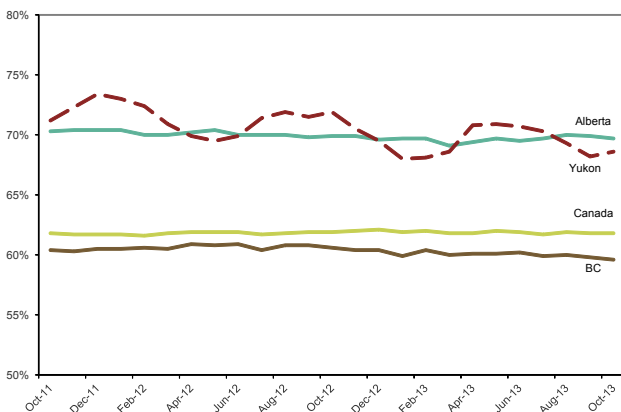
The October 2013 employment rate of 68.6%, is up 0.4 percentage points from September, and down 3.3 percentage points compared to October 2012 (71.9%).

Yukon's labour market in terms of participation rate and employment rate tends to be similar to Alberta's; however, as is often the case with a small population base, our rates show a higher degree of volatility.

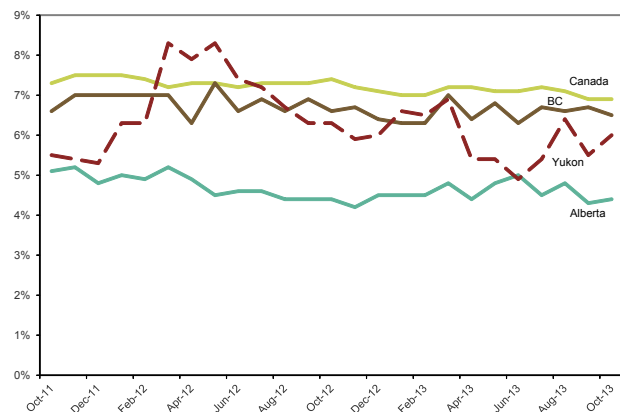
Participation Rate, Oct 2011 - Oct 2013



Employment Rate, Oct 2011 - Oct 2013



Unemployment Rate, Oct 2011 - Oct 2013

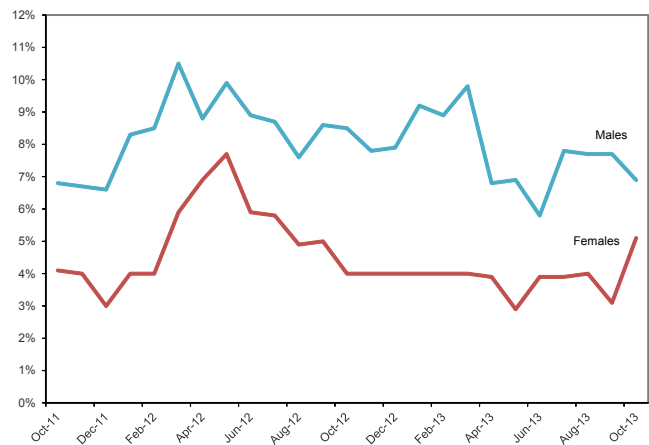


# Seasonally Adjusted Labour Force, age 15+

	Labour Force			Employment			Unemployment		
	Both sexes	Males	Females	Both sexes	Males	Females	Both sexes	Males	Females
Oct-13	20,100	10,200	9,900	19,000	9,500	9,500	1,200	700	500
Sep-13	20,100	10,400	9,700	18,900	9,600	9,400	1,100	800	300
Aug-13	20,400	10,400	10,000	19,200	9,600	9,600	1,300	800	400
Jul-13	20,500	10,300	10,200	19,400	9,600	9,800	1,100	800	400
Jun-13	20,500	10,300	10,200	19,500	9,700	9,800	1,000	600	400
May-13	20,500	10,200	10,300	19,500	9,500	9,900	1,100	700	300
Apr-13	20,500	10,300	10,200	19,400	9,600	9,800	1,100	700	400
Mar-13	20,200	10,200	10,000	18,800	9,200	9,600	1,400	1,000	400
Feb-13	19,900	10,100	9,900	18,600	9,200	9,500	1,300	900	400
Jan-13	19,800	9,800	10,000	18,500	8,900	9,600	1,300	900	400
Dec-12	20,100	10,100	10,000	18,900	9,300	9,700	1,200	800	400
Nov-12	20,200	10,300	9,900	19,100	9,500	9,500	1,200	800	400
Oct-12	20,700	10,600	10,100	19,400	9,800	9,600	1,300	900	400
Sep-12	20,700	10,500	10,100	19,300	9,700	9,600	1,300	900	500
Aug-12	20,800	10,500	10,300	19,400	9,600	9,800	1,400	800	500
Jul-12	20,700	10,400	10,300	19,200	9,500	9,700	1,500	900	600
Jun-12	20,400	10,100	10,200	18,800	9,200	9,600	1,500	900	600
May-12	20,500	10,100	10,400	18,700	9,100	9,600	1,700	1,000	800
Apr-12	20,300	10,200	10,200	18,800	9,300	9,500	1,600	900	700
Mar-12	20,600	10,500	10,100	19,000	9,400	9,600	1,700	1,100	600
Feb-12	20,700	10,600	10,100	19,400	9,700	9,700	1,300	900	400
Jan-12	20,800	10,800	10,100	19,500	9,800	9,700	1,300	900	400
Dec-11	20,700	10,600	10,100	19,600	9,900	9,700	1,100	700	300
Nov-11	20,400	10,400	9,900	19,300	9,700	9,600	1,100	700	400
Oct-11	20,100	10,300	9,800	19,000	9,600	9,400	1,100	700	400

	Unemployment rate		
	Both sexes	Males	Females
Oct-13	6.0	6.9	5.1
Sep-13	5.5	7.7	3.1
Aug-13	6.4	7.7	4.0
Jul-13	5.4	7.8	3.9
Jun-13	4.9	5.8	3.9
May-13	5.4	6.9	2.9
Apr-13	5.4	6.8	3.9
Mar-13	6.9	9.8	4.0
Feb-13	6.5	8.9	4.0
Jan-13	6.6	9.2	4.0
Dec-12	6.0	7.9	4.0
Nov-12	5.9	7.8	4.0
Oct-12	6.3	8.5	4.0
Sep-12	6.3	8.6	5.0
Aug-12	6.7	7.6	4.9
Jul-12	7.2	8.7	5.8
Jun-12	7.4	8.9	5.9
May-12	8.3	9.9	7.7
Apr-12	7.9	8.8	6.9
Mar-12	8.3	10.5	5.9
Feb-12	6.3	8.5	4.0
Jan-12	6.3	8.3	4.0
Dec-11	5.3	6.6	3.0
Nov-11	5.4	6.7	4.0
Oct-11	5.5	6.8	4.1

Unemployment Rate, 15+, Males and Females, October 2011 - October 2013

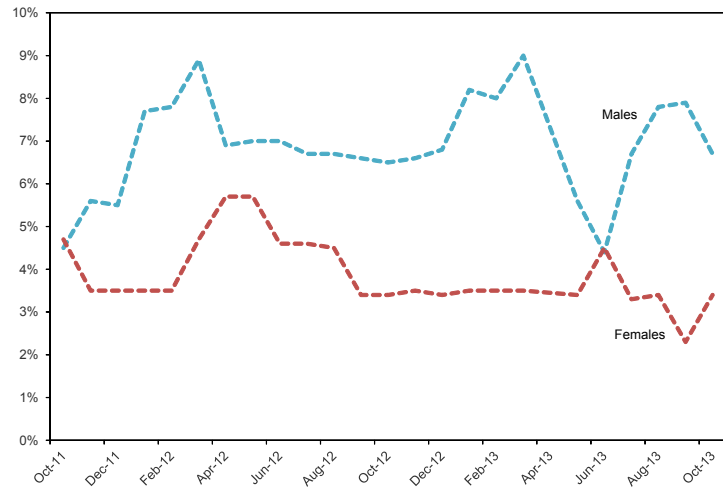


# Seasonally Adjusted Labour Force, age 25+

	Labour Force			Employment			Unemployment		
	Both sexes	Males	Females	Both sexes	Males	Females	Both sexes	Males	Females
Oct-13	17,800	8,900	8,800	16,800	8,300	8,500	900	600	300
Sep-13	17,600	8,900	8,700	16,700	8,300	8,500	900	700	200
Aug-13	17,900	9,000	8,900	16,900	8,300	8,600	1,000	700	300
Jul-13	18,000	9,000	9,000	17,100	8,500	8,700	900	600	300
Jun-13	18,000	9,000	9,000	17,100	8,500	8,700	900	600	300
May-13	17,800	8,900	8,800	17,000	8,400	8,500	800	500	300
Mar-13	17,500	8,900	8,600	16,500	8,100	8,300	1,100	800	300
Feb-13	17,300	8,700	8,600	16,300	8,000	8,200	1,000	700	300
Jan-13	17,100	8,500	8,600	16,100	7,800	8,300	1,000	700	300
Dec-12	17,500	8,800	8,700	16,600	8,200	8,300	900	600	300
Nov-12	17,700	9,100	8,600	16,800	8,500	8,300	900	600	300
Oct-12	18,000	9,300	8,700	17,100	8,700	8,400	1,000	600	300
Sep-12	17,800	9,100	8,700	16,900	8,500	8,400	900	600	300
Aug-12	17,800	9,000	8,800	16,800	8,400	8,400	1,000	600	400
Jul-12	17,600	8,900	8,700	16,600	8,300	8,300	1,000	600	400
Jun-12	17,300	8,600	8,700	16,200	8,000	8,200	1,000	600	400
May-12	17,300	8,600	8,700	16,200	7,900	8,300	1,100	600	500
Apr-12	17,300	8,700	8,700	16,300	8,100	8,200	1,100	600	500
Mar-12	17,600	9,000	8,600	16,400	8,200	8,300	1,200	800	400
Feb-12	17,500	9,000	8,500	16,500	8,400	8,200	1,000	700	300
Jan-12	17,700	9,100	8,500	16,700	8,400	8,200	1,000	700	300
Dec-11	17,800	9,100	8,600	17,000	8,600	8,400	800	500	300
Nov-11	17,600	9,000	8,600	16,800	8,500	8,300	800	500	300
Oct-11	17,300	8,800	8,500	16,500	8,300	8,100	800	400	400

	Unemployment rate		
	Both sexes	Males	Females
Oct-13	5.1	6.7	3.4
Sep-13	5.1	7.9	2.3
Aug-13	5.6	7.8	3.4
Jul-13	5.0	6.7	3.3
Jun-13	4.4	4.4	4.5
May-13	4.5	5.6	3.4
Mar-13	6.3	9.0	3.5
Feb-13	5.8	8.0	3.5
Jan-13	5.8	8.2	3.5
Dec-12	5.1	6.8	3.4
Nov-12	5.1	6.6	3.5
Oct-12	5.6	6.5	3.4
Sep-12	5.1	6.6	3.4
Aug-12	5.6	6.7	4.5
Jul-12	5.7	6.7	4.6
Jun-12	5.8	7.0	4.6
May-12	6.4	7.0	5.7
Apr-12	6.4	6.9	5.7
Mar-12	6.8	8.9	4.7
Feb-12	5.7	7.8	3.5
Jan-12	5.6	7.7	3.5
Dec-11	4.5	5.5	3.5
Nov-11	4.5	5.6	3.5
Oct-11	4.6	4.5	4.7

Unemployment Rate, 25+, Males and Females, October 2011 - October 2013



# Labour Force, *Unadjusted* and Annual, age 15+

## Highlights:

- Comparing October 2013 to September 2013 figures, employment in the goods-producing sector decreased by 100 to 2,800. Employment in the services-producing sector also decreased by 100 to 16,600.
- Compared to September 2013, full-time employment in October decreased by 100; part-time employment also decreased by 100.
- Of all those employed in October 2013: 44.3% were private employees; 39.7% were public employees; and 15.5% were self-employed.

	Labour Force			Employment			Unemployment		
	Both sexes	Males	Females	Both sexes	Males	Females	Both sexes	Males	Females
Oct-13	20,400	10,500	9,900	19,400	10,000	9,400	1,000	500	500
Sep-13	20,500	10,700	9,800	19,600	10,100	9,500	900	500	300
Aug-13	21,000	10,800	10,200	20,000	10,200	9,800	1,000	600	400
Jul-13	21,000	10,600	10,300	19,900	10,000	9,900	1,000	600	400
Jun-13	20,700	10,400	10,200	19,600	9,700	9,800	1,100	700	400
May-13	20,400	10,300	10,200	19,100	9,300	9,800	1,300	1,000	300
Apr-13	20,100	10,100	10,100	18,800	9,200	9,700	1,300	900	400
Mar-13	19,800	9,900	9,900	18,400	8,900	9,500	1,500	1,000	400
Feb-13	19,600	9,700	9,800	18,200	8,800	9,400	1,400	900	400
Jan-13	19,500	9,500	9,900	18,200	8,600	9,500	1,300	900	400
Dec-12	19,800	9,900	10,000	18,700	9,100	9,600	1,200	800	400
Nov-12	19,900	10,100	9,800	18,900	9,400	9,500	1,100	700	400
Oct-12	20,700	10,700	10,000	19,600	10,000	9,600	1,200	700	400
2012	20,400	10,200	10,200	18,900	9,300	9,700	1,400	900	500
2011	20,200	10,300	9,900	19,100	9,700	9,400	1,100	600	500
2010	18,900	9,800	9,100	17,500	9,000	8,500	1,300	800	600
2009	18,700	9,600	9,100	17,300	8,700	8,600	1,300	900	500
2008	18,900	9,800	9,100	18,000	9,100	8,900	900	700	300
2007	18,100	9,400	8,800	17,200	8,800	8,400	900	600	300
2006	18,200	9,500	8,700	17,400	9,000	8,400	800	500	200
2005	18,100	9,200	8,800	17,200	8,600	8,600	900	600	300
2004	17,800	8,900	8,900	16,700	8,200	8,500	1,100	700	400
2003	16,900	8,500	8,400	15,200	7,500	7,700	1,700	1,100	600

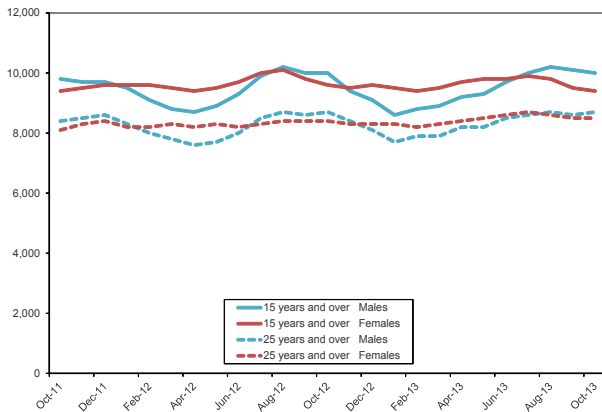
	Unemployment rate			Participation rate			Employment rate		
	Both sexes	Males	Females	Both sexes	Males	Females	Both sexes	Males	Females
Oct-13	4.9	4.8	5.1	73.6	75.5	71.2	70.0	71.9	67.6
Sep-13	4.4	4.7	3.1	74.0	77.0	71.0	70.8	72.7	68.8
Aug-13	4.8	5.6	3.9	75.8	78.3	73.9	72.2	73.9	71.0
Jul-13	4.8	5.7	3.9	76.1	76.8	74.6	72.1	72.5	71.7
Jun-13	5.3	6.7	3.9	75.0	75.4	73.9	71.0	70.3	71.0
May-13	6.4	9.7	2.9	74.2	74.6	73.9	69.5	67.4	71.0
Apr-13	6.5	8.9	4.0	73.4	73.7	73.7	68.6	67.2	70.8
Mar-13	7.6	10.1	4.0	72.3	72.3	72.3	67.2	65.0	69.3
Feb-13	7.1	9.3	4.1	71.8	71.3	71.5	66.7	64.7	68.6
Jan-13	6.7	9.5	4.0	71.7	69.9	72.8	66.9	63.2	69.9
Dec-12	6.1	8.1	4.0	72.8	72.8	73.5	68.8	66.9	70.6
Nov-12	5.5	6.9	4.1	73.4	74.8	72.1	69.7	69.6	69.9
Oct-12	5.8	6.5	4.0	76.7	79.3	74.1	72.6	74.1	71.1
2012	6.9	8.8	4.9	75.6	75.6	75.6	70.0	68.9	71.9
2011	5.4	5.8	5.1	76.2	77.4	75.0	72.1	72.9	71.2
2010	6.9	8.2	6.6	72.7	74.8	70.5	67.3	68.7	65.9
2009	7.0	9.4	5.5	73.9	75.0	72.8	68.4	68.0	68.8
2008	4.8	7.1	3.3	75.9	77.8	74.0	72.3	72.2	72.4
2007	5.0	6.4	3.4	74.2	76.4	73.3	70.5	71.5	70.0
2006	4.4	5.3	2.3	75.8	77.9	73.1	72.5	73.8	70.6
2005	5.0	6.5	3.4	76.4	76.7	75.2	72.6	71.7	73.5
2004	6.2	7.9	4.5	76.7	76.1	77.4	72.0	70.1	73.9
2003	10.1	12.9	7.1	74.4	74.6	74.3	67.0	65.8	68.1

# Labour Force, *Unadjusted*, by Age and Sex, Oct 2013

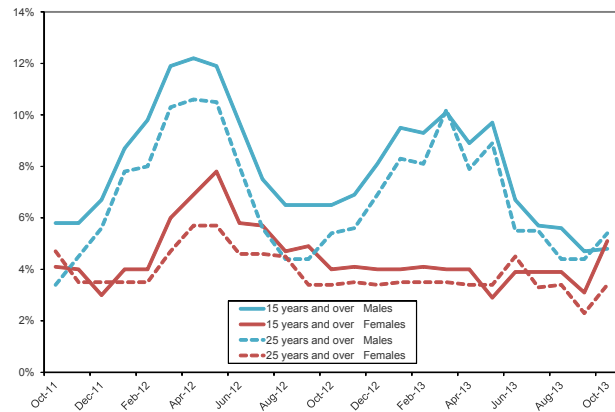
		Labour force	Employment	Unemployment	Not in labour force	Unemployment rate	Participation rate	Employment rate
Both Sexes	15 +	20,400	19,400	1,000	7,300	4.9	73.6	70.0
	15 - 24	2,400	2,100	200	1,800	8.3	57.1	50.0
	25 +	18,000	17,200	700	5,500	3.9	76.6	73.2
	25 - 54	13,800	13,100	600	1,800	4.3	88.5	84.0
	55 +	4,200	4,100	x	3,700	x	53.2	51.9
Males	15 +	10,500	10,000	500	3,400	4.8	75.5	71.9
	15 - 24	1,300	1,300	x	800	x	61.9	61.9
	25 +	9,200	8,700	500	2,600	5.4	78.0	73.7
	25 - 54	6,800	6,400	400	800	5.9	89.5	84.2
	55 +	2,300	2,300	x	1,800	x	54.8	54.8
Females	15 +	9,900	9,400	500	4,000	5.1	71.2	67.6
	15 - 24	1,100	900	200	1,100	18.2	52.4	42.9
	25 +	8,800	8,500	300	2,900	3.4	75.2	72.6
	25 - 54	6,900	6,700	200	1,000	2.9	87.3	84.8
	55 +	1,900	1,800	x	1,900	x	50.0	47.4

x = suppressed for confidentiality

Employment by Age and Sex, Oct 2011 - Oct 2013



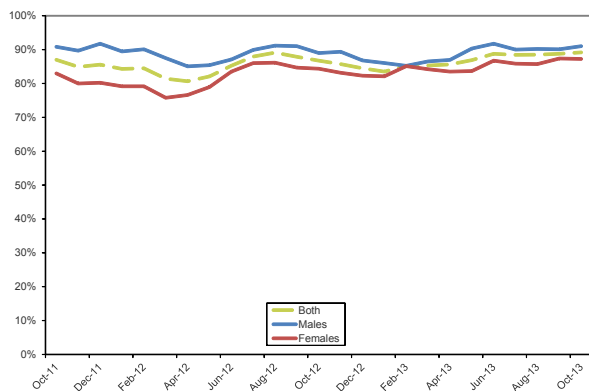
Unemployment Rate by Age and Sex, Oct 2011 - Oct 2013



- Comparing October 2013 to September 2013, the unemployment rate for males aged 15+ increased slightly from 4.7% to 4.8% and the rate for males aged 25+ increased from 4.4% to 5.4%. The rate for females aged 15+ increased from 3.1% to 5.1%, while for females aged 25+ it increased from 2.3% to 3.4%.
- Yukon's youth unemployment rate (aged 15-24) has been consistently over 10% since March of 2011, with the exception of four months in 2013. In October it was again below 10% at 8.3%.

## Employment, *Unadjusted*, by Full-time/Part-time, Oct 2013

Full-time employment as a % of all employment Age 15+, Oct 2011 - Oct 2013



- 17,300, or 89.2%, of Yukon's workers aged 15+ were employed full-time in October 2013. This was the second-highest among all other jurisdictions.
- Nationally, 81.0% of employed Canadians worked full-time in October.
- 91.0% of employed Yukon males worked full-time, while 87.2% of females did.
- Comparing October 2013 to September 2013, full-time employment decreased by 100.

## Employment, *Unadjusted*, by Industry, Oct 2013

	Both sexes	Males	Females
<b>Total employed</b>	19,400	10,000	9,400
Goods-producing sector	2,800	2,500	300
Construction	1,700	1,600	x
Services-producing sector	16,600	7,500	9,100
Trade	2,000	1,000	1,000
Transportation and warehousing	900	700	200
Finance, insurance, real estate and leasing	800	300	500
Professional, scientific and technical services	1,300	500	800
Business, building and other support services	600	400	200
Educational services	1,400	400	900
Health care and social assistance	2,300	500	1,800
Information, culture and recreation	1,200	500	700
Accommodation and food services	1,300	700	600
Other services	600	400	300
Public administration	4,100	1,900	2,200

x = suppressed for confidentiality

Note: The sum of industry rows shown does not equal sector totals as industries with fewer than 500 workers are not shown.

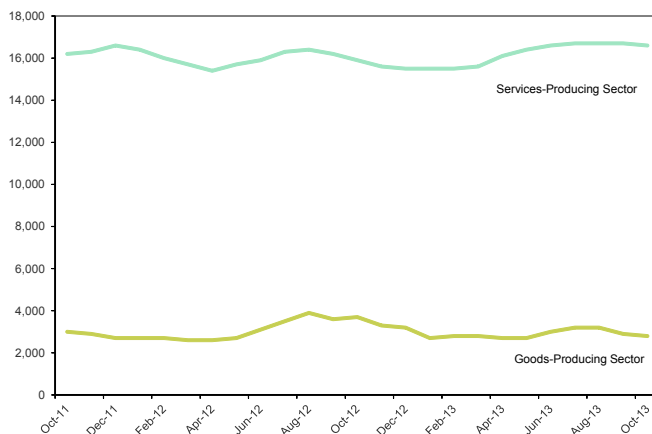
- In October 2013, 16,600, or 85.6% of working Yukoners were employed in the services-producing sector, while 2,800, or 14.4% were employed in the goods-producing sector.
- 60.7% of Yukoners working in the goods-producing sector had jobs in the construction industry.
- While females accounted for 54.8% of workers in Yukon's services-producing sector, only 10.7% of goods-producing sector workers were female.

### Goods- and services-producing sectors

The goods-producing sector includes those industries that are involved in extracting resources directly from the earth (e.g. farming, mining, logging) or processing the resources (e.g. utilities, construction, manufacturing). Yukon's goods-producing sector are industries primarily in construction and mining.

The services-producing sector includes industries involved in the provision of services.

Goods- and Services-Producing Sectors, Employment, Oct 2011 - Oct 2013



- Employment in Yukon's goods-producing sector peaked in August 2012 with 3,900 workers. Employment in the service-producing peaked in July 2013 when employment reached 16,700 and remained at the same level in August and September before declining slightly in October 2013.
- Comparing October 2013 to October 2012, employment in the goods-producing sector decreased by 900, or 24.3%, while employment in the services-producing sector increased by 700, or 4.4%.

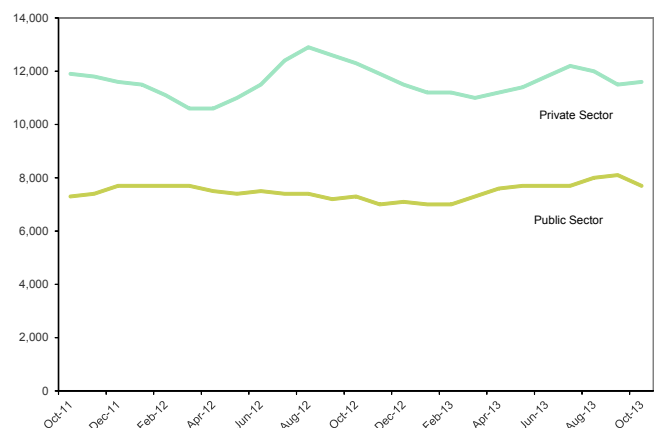
## Public and Private Sectors, *Unadjusted*, Oct 2013

	Both sexes	Males	Females
<b>Total Employed</b>	19,400	10,000	9,400
Public employees	7,700	3,300	4,400
Total private sector	11,600	6,700	5,000
Private employees	8,600	4,600	4,000
Self-employed	3,000	2,100	1,000

Note: 'Public employees' includes federal, territorial, First Nation and municipal employees.

- In October 2013, 39.7% of working Yukoners were employed by one of the four levels of government in the territory.
- Of the private sector, 25.9% were self-employed.
- Private sector employment was down by 700, or 5.7%, from October 2012, while public sector employment increased by 400, or 5.5%.

Public/Private Sector Employment, Oct 2011 - Oct 2013



# Labour Force Survey Definitions

---

**Employment** — Employed persons are those who, during the reference week, did any work for pay or profit, or had a job and were absent from work.

**Employment rate** — Also referred to as “employment/population ratio,” it is the number of employed persons expressed as a percentage of the population aged 15 years and over. The employment rate for a particular group (for example, women aged 25 years and over) is the number employed in that group expressed as a percentage of the population for that group.

**Goods-Producing Industries** — Goods-Producing Industries (or goods sector, or goods industries): includes agriculture, other primary industries (forestry; fishing and trapping; mines, quarries and oil wells), manufacturing, construction and utilities (electric power, gas and water).

**Labour force** — The labour force is the civilian non-institutional population 15 years of age and over who, during the survey reference week, were employed or unemployed.

**Not in the labour force** — Persons not in the labour force are those who, during the reference week, were unwilling or unable to offer or supply labour services under conditions existing in their labour markets; that is, they were neither employed nor unemployed.

**Participation rate** — The participation rate is the total labour force expressed as a percentage of the population aged 15 years and over. The participation rate for a particular group (for example, women aged 25 years and over) is the labour force in that group expressed as a percentage of the population for that group.

**Reference Week** — The reference week is the entire calendar week (from Sunday to Saturday) covered by the Labour Force Survey each month. It is usually the week containing the 15th day of the month. The interviews are conducted during the following week, called the Survey Week, and the labour force status determined is that of the reference week.

**Seasonal adjustment** — Fluctuations in economic time series are caused by seasonal, cyclical and irregular movements. A seasonally adjusted series is one from which seasonal movements have been eliminated. Seasonal

movements are defined as those that are caused by regular annual events such as climate, holidays, vacation periods and cycles related to crops, production and retail sales associated with Christmas and Easter. It should be noted that the seasonally adjusted series contain irregular as well as longer-term cyclical fluctuations.

**Self-employed** — There are two broad categories of workers: those who work for others and those who work for themselves, namely, the self-employed. The self-employed includes working owners of incorporated businesses, working owners of unincorporated businesses and other self-employed.

**Service-Producing Industries** — Service-Producing Industries (or service sector, or service industries): includes trade; transportation and warehousing; finance, insurance, real estate and leasing; professional, scientific and technical services; management, administrative and other support; educational services; health care and social assistance; information, culture and recreation; accommodation and food services; other services; and public administration.

**Three-Month Moving Average** — All monthly figures for the Territories, whether seasonally adjusted or unadjusted, are three-month moving averages – for example, the March 2011 unemployment rate of 4.5% is actually an average of the unemployment rates for the months of January, February and March. April’s unemployment rate became the average of the rates for February, March and April. Because they are three-month moving averages, the Territories’ figures are not included in the calculation of Canada’s numbers.

**Unemployment** — Unemployed persons are those who, during the reference week, were available for work and were either on temporary layoff, had looked for work in the past four weeks, or had a job to start within the next four weeks.

**Unemployment rate** — The unemployment rate is the number of unemployed persons expressed as a percentage of the labour force. The unemployment rate for a particular group (age, sex, marital status, etc.) is the number unemployed in that group expressed as a percentage of the labour force for that group.

Information sheet no. 34.253 – November 2013  
Next release date: December 9, 2013