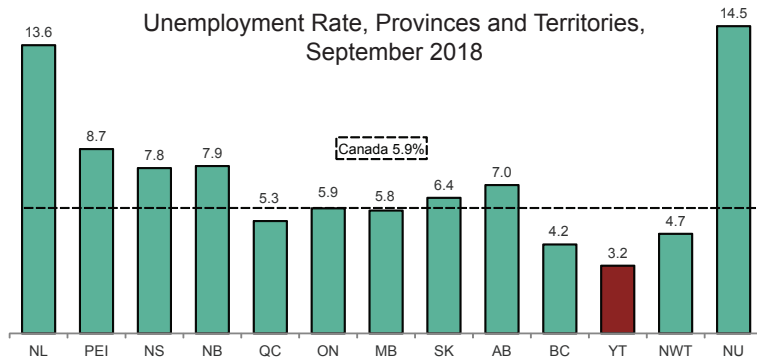


## Yukon Employment September 2018

### Highlights:

- In September 2018, Yukon's unemployment rate (3.2%) increased by 0.5 percentage points compared to August 2018 (2.7%).
- Compared to figures for August 2018, Yukon's labour force decreased by 300 to 21,800, the number of employed decreased by 400 to 21,100 and the number of unemployed increased by 100 to 700.



- Nationally, the September 2018 unemployment rate (5.9%) decreased by 0.1 percentage point compared to the rate in August 2018 (6.0%).
- Compared to August 2018 figures, the labour force in Canada increased by 0.2%, the number of employed increased by 0.3% and the number of unemployed decreased by 2.0%.

### September 2018 Yukon Employment at a Glance:

Labour Force .....	21,800
Employed.....	21,100
Unemployed .....	700
Unemployment Rate.....	3.2%
Employment Rate.....	71.5%

### Contents:

Overview.....	1
Comparisons with Canada .....	2
Seasonally Adjusted, 15+ .....	3
Seasonally Adjusted, 25+ .....	4
Unadjusted, 15+ .....	5
Age, Full-time and Part-time.....	6
Industry and Class of Worker .....	7
Definitions.....	8

Notes: All figures are based on Statistics Canada's Labour Force Survey (LFS) estimates. Statistics Canada reports LFS figures rounded to the nearest hundred. Therefore, components may not add up to the total.

Analyses and data tables in pages 1 through 4 are based on seasonally adjusted numbers. Unadjusted figures are available on pages 5 through 7.

Seasonally adjusted employment figures are widely used and quoted, as they are considered to be a more accurate picture of the current employment situation than unadjusted figures. Some variables, however, are only available on an unadjusted basis. Comparisons between adjusted and unadjusted figures should not be made. For more information, see [definitions on page 8](#).

### Other Sources of Labour Market Information:

**Statistics Canada's Daily Release** - a summary of the current Labour Force Survey numbers from across Canada. <https://www150.statcan.gc.ca/n1/daily-quotidien/181005/dq181005a-eng.pdf>

**Yukon Employment Annual Review, 2017** - Annual summary of Yukon Labour Force Survey data; includes Aboriginal/non-Aboriginal and Rural/Whitehorse data. [http://www.eco.gov.yk.ca/stats/pdf/employment\\_2017.pdf](http://www.eco.gov.yk.ca/stats/pdf/employment_2017.pdf)

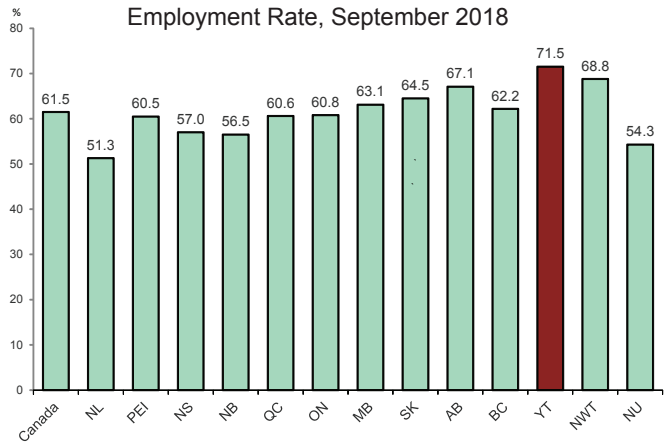
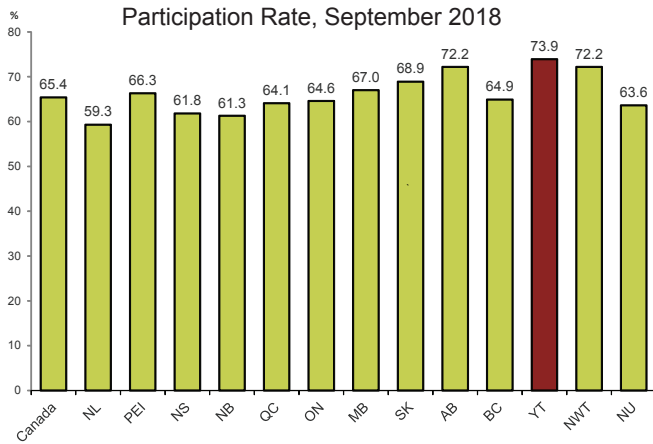
**Yukon Employment Historical Data, 2008-2017** - detailed monthly and annual data tables based on Labour Force Survey. [http://www.eco.gov.yk.ca/stats/pdf/Historical\\_LFS\\_2017.pdf](http://www.eco.gov.yk.ca/stats/pdf/Historical_LFS_2017.pdf)

**Yukon Survey of Employment, Payrolls and Hours, 2017** - detailed annual information on number of paid employees, payrolls, and hours worked. [http://www.eco.gov.yk.ca/stats/pdf/seph\\_2017.pdf](http://www.eco.gov.yk.ca/stats/pdf/seph_2017.pdf)

**Yukon Labour Demand Survey, 2016** - information on employment, vacancies and expected vacancies. [http://www.eco.gov.yk.ca/stats/pdf/2016\\_Labour\\_Demand\\_Survey\\_Reportr.pdf](http://www.eco.gov.yk.ca/stats/pdf/2016_Labour_Demand_Survey_Reportr.pdf)

**Yukon Employment and Skills Survey, 2017** - detailed information on employment, unemployment, and education and training. [http://www.eco.gov.yk.ca/stats/pdf/2017\\_Yukon\\_Employment\\_Skills\\_Survey\\_Report.pdf](http://www.eco.gov.yk.ca/stats/pdf/2017_Yukon_Employment_Skills_Survey_Report.pdf)

# Comparisons with Canada, Provinces and Territories - Snapshot



The participation rate measures the percentage of the population aged 15 years and over, which is working or actively looking for work. In September 2018, Yukon's participation rate (73.9%) was the highest in Canada, followed by Alberta (72.2%) and the Northwest Territories (72.2%).

Yukon's September 2018 employment rate (the percentage of the population aged 15 years and over, which is employed), was 71.5%, also the highest in Canada, followed by the Northwest Territories (68.8%).

## Comparisons with Canada and Selected Provinces - Historical

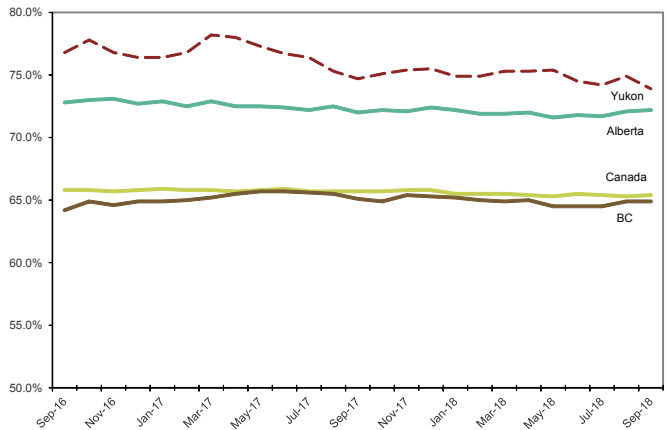
The Labour Force Survey estimates that 73.9% of Yukoners aged 15 years and over were employed or seeking employment in September 2018.

Yukon's participation rate in September 2018 (73.9%) decreased by 1.0 percentage point compared to the rate in August 2018 (74.9%) and decreased by 0.8 percentage points compared to the rate in September 2017 (74.7%).

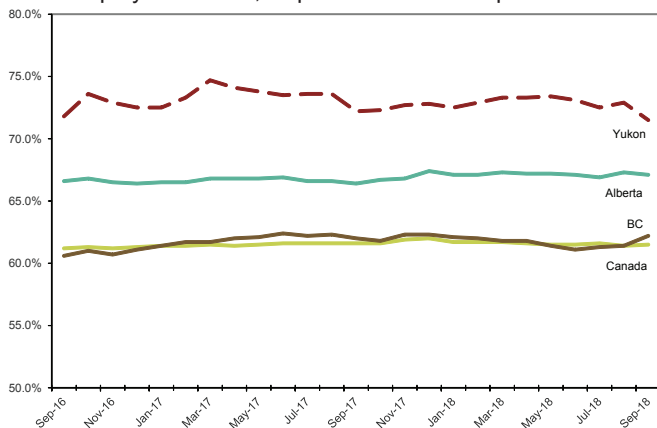
The September 2018 employment rate of 71.5% decreased by 1.4 percentage points compared to the rate in August 2018 (72.9%) and decreased by 0.7 percentage points compared to the rate in September 2017 (72.2%).

*Yukon's labour market in terms of participation rate and employment rate tends to be similar to Alberta's. However, as is often the case with a small population base, our rates show a higher degree of volatility.*

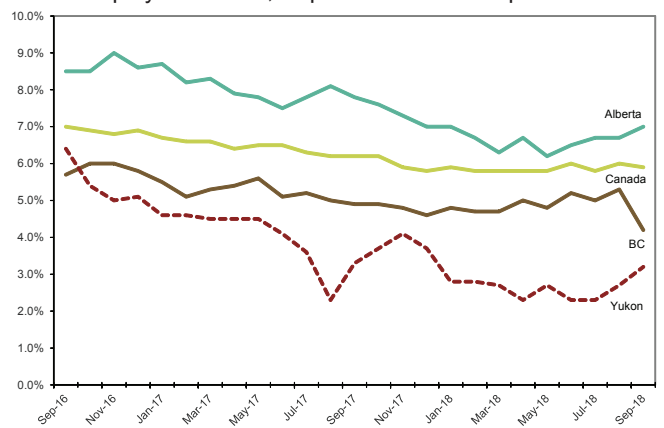
Participation Rate, September 2016 - September 2018



Employment Rate, September 2016 - September 2018



Unemployment Rate, September 2016 - September 2018

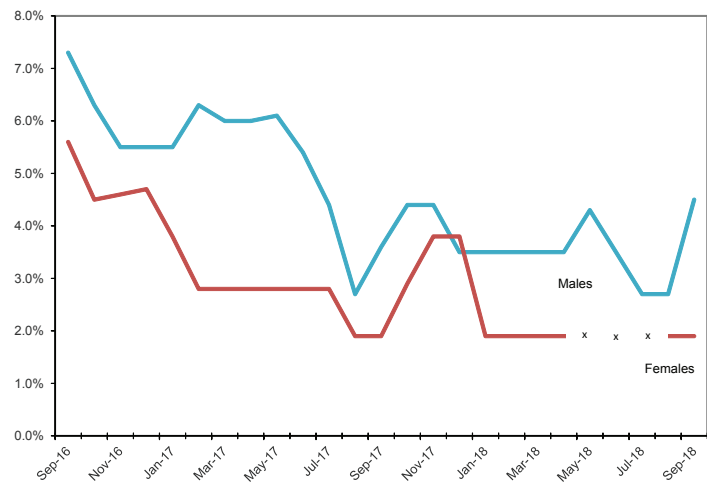


# Seasonally Adjusted Labour Force, aged 15+ years, Yukon

	Labour Force			Employment			Unemployment		
	Both sexes	Males	Females	Both sexes	Males	Females	Both sexes	Males	Females
Sep-18	21,800	11,200	10,600	21,100	10,700	10,400	700	500	200
Aug-18	22,100	11,200	10,800	21,500	10,900	10,600	600	300	200
Jul-18	21,900	11,200	10,700	21,400	10,900	10,500	500	300	x
Jun-18	21,900	11,300	10,600	21,500	10,900	10,500	500	400	x
May-18	22,100	11,600	10,500	21,500	11,200	10,300	600	500	x
Apr-18	22,000	11,500	10,500	21,400	11,200	10,300	500	400	200
Mar-18	22,000	11,400	10,600	21,400	11,000	10,400	600	400	200
Feb-18	21,800	11,300	10,500	21,200	10,900	10,300	600	400	200
Jan-18	21,800	11,300	10,500	21,100	10,900	10,300	600	400	200
Dec-17	21,900	11,300	10,600	21,100	10,900	10,200	800	400	400
Nov-17	21,800	11,300	10,600	21,000	10,800	10,200	900	500	400
Oct-17	21,700	11,300	10,400	20,900	10,800	10,100	800	500	300
Sep-17	21,500	11,200	10,300	20,800	10,800	10,100	700	400	200
Aug-17	21,700	11,200	10,500	21,200	10,900	10,300	500	300	200
Jul-17	22,000	11,300	10,800	21,200	10,800	10,400	800	500	300
Jun-17	22,000	11,200	10,800	21,100	10,600	10,500	900	600	300
May-17	22,100	11,500	10,600	21,100	10,800	10,300	1,000	700	300
Apr-17	22,300	11,600	10,700	21,200	10,800	10,400	1,000	700	300
Mar-17	22,300	11,600	10,700	21,300	10,900	10,400	1,000	700	300
Feb-17	21,900	11,200	10,700	20,900	10,500	10,300	1,000	700	300
Jan-17	21,700	11,000	10,600	20,600	10,400	10,200	1,000	600	400
Dec-16	21,700	11,000	10,700	20,600	10,400	10,200	1,100	600	500
Nov-16	21,800	11,000	10,800	20,700	10,400	10,300	1,100	600	500
Oct-16	22,100	11,100	11,000	20,900	10,400	10,500	1,200	700	500
Sep-16	21,800	11,000	10,800	20,400	10,200	10,200	1,400	800	600

	Unemployment rate		
	Both sexes	Males	Females
Sep-18	3.2	4.5	1.9
Aug-18	2.7	2.7	1.9
Jul-18	2.3	2.7	x
Jun-18	2.3	3.5	x
May-18	2.7	4.3	x
Apr-18	2.3	3.5	1.9
Mar-18	2.7	3.5	1.9
Feb-18	2.8	3.5	1.9
Jan-18	2.8	3.5	1.9
Dec-17	3.7	3.5	3.8
Nov-17	4.1	4.4	3.8
Oct-17	3.7	4.4	2.9
Sep-17	3.3	3.6	1.9
Aug-17	2.3	2.7	1.9
Jul-17	3.6	4.4	2.8
Jun-17	4.1	5.4	2.8
May-17	4.5	6.1	2.8
Apr-17	4.5	6.0	2.8
Mar-17	4.5	6.0	2.8
Feb-17	4.6	6.3	2.8
Jan-17	4.6	5.5	3.8
Dec-16	5.1	5.5	4.7
Nov-16	5.0	5.5	4.6
Oct-16	5.4	6.3	4.5
Sep-16	6.4	7.3	5.6

Unemployment Rate, 15+, Males and Females, September 2016 - September 2018



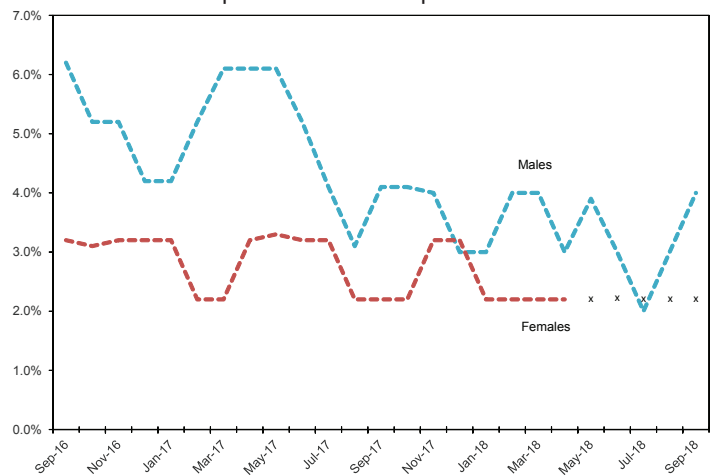
Note: Data may not add up to the totals due to rounding.

# Seasonally Adjusted Labour Force, aged 25+ years, Yukon

	Labour Force			Employment			Unemployment		
	Both sexes	Males	Females	Both sexes	Males	Females	Both sexes	Males	Females
Sep-18	19,200	10,000	9,200	18,700	9,600	9,100	500	400	x
Aug-18	19,500	10,000	9,500	19,100	9,700	9,400	400	300	x
Jul-18	19,400	10,000	9,400	19,100	9,800	9,300	300	200	x
Jun-18	19,500	10,000	9,400	19,100	9,700	9,300	400	300	x
May-18	19,500	10,200	9,300	19,000	9,800	9,100	500	400	x
Apr-18	19,200	10,100	9,200	18,700	9,700	9,000	500	300	200
Mar-18	19,200	10,000	9,300	18,700	9,600	9,100	500	400	200
Feb-18	19,200	10,000	9,300	18,700	9,600	9,100	500	400	200
Jan-18	19,200	10,000	9,200	18,700	9,700	9,000	600	300	200
Dec-17	19,200	9,900	9,300	18,500	9,600	9,000	700	300	300
Nov-17	19,300	9,900	9,400	18,600	9,500	9,100	600	400	300
Oct-17	19,200	9,800	9,300	18,600	9,400	9,100	600	400	200
Sep-17	19,100	9,800	9,300	18,500	9,400	9,100	600	400	200
Aug-17	19,000	9,700	9,300	18,500	9,400	9,100	500	300	200
Jul-17	19,200	9,800	9,500	18,600	9,400	9,200	700	400	300
Jun-17	19,100	9,700	9,400	18,300	9,200	9,100	800	500	300
May-17	19,000	9,800	9,200	18,100	9,200	8,900	900	600	300
Apr-17	19,100	9,900	9,300	18,300	9,200	9,000	900	600	300
Mar-17	19,200	9,900	9,300	18,400	9,300	9,100	800	600	200
Feb-17	18,900	9,700	9,200	18,200	9,200	9,000	700	500	200
Jan-17	18,900	9,600	9,300	18,200	9,200	9,000	600	400	300
Dec-16	19,000	9,600	9,400	18,200	9,200	9,000	700	400	300
Nov-16	19,100	9,600	9,500	18,300	9,100	9,200	800	500	300
Oct-16	19,400	9,700	9,600	18,600	9,200	9,400	800	500	300
Sep-16	19,100	9,700	9,500	18,300	9,000	9,200	900	600	300

	Unemployment rate		
	Both sexes	Males	Females
Sep-18	2.6	4.0	x
Aug-18	2.1	3.0	x
Jul-18	1.5	2.0	x
Jun-18	2.1	3.0	x
May-18	2.6	3.9	x
Apr-18	2.6	3.0	2.2
Mar-18	2.6	4.0	2.2
Feb-18	2.6	4.0	2.2
Jan-18	3.1	3.0	2.2
Dec-17	3.6	3.0	3.2
Nov-17	3.1	4.0	3.2
Oct-17	3.1	4.1	2.2
Sep-17	3.1	4.1	2.2
Aug-17	2.6	3.1	2.2
Jul-17	3.6	4.1	3.2
Jun-17	4.2	5.2	3.2
May-17	4.7	6.1	3.3
Apr-17	4.7	6.1	3.2
Mar-17	4.2	6.1	2.2
Feb-17	3.7	5.2	2.2
Jan-17	3.2	4.2	3.2
Dec-16	3.7	4.2	3.2
Nov-16	4.2	5.2	3.2
Oct-16	4.1	5.2	3.1
Sep-16	4.7	6.2	3.2

Unemployment Rate, 25+, Males and Females, September 2016 - September 2018



Note: Data may not add up to the totals due to rounding.

# Labour Force, *Unadjusted* and Annual, aged 15+ years, Yukon

## Highlights:

- Compared to the figures for August 2018, full-time employment in September 2018 decreased by 600 to 18,400; part-time employment increased by 100 to 3,200.
- In September 2018, employment in the goods-producing sector (3,800) remained the same compared to August 2018. Employment in the services-producing sector (17,800) decreased by 600.
- Of all those employed in September 2018: 43.1% were public sector employees; 40.3% were private sector employees (see note on page 7); and 16.7% were self-employed.

	Labour Force			Employment			Unemployment		
	Both sexes	Males	Females	Both sexes	Males	Females	Both sexes	Males	Females
Sep-18	22,200	11,500	10,800	21,600	11,000	10,600	700	500	200
Aug-18	22,600	11,600	11,100	22,100	11,300	10,900	500	300	200
Jul-18	22,400	11,500	10,900	22,000	11,200	10,800	500	300	x
Jun-18	22,100	11,200	10,900	21,500	10,800	10,700	500	400	x
May-18	21,700	11,200	10,500	21,100	10,700	10,400	600	500	x
Apr-18	21,300	10,900	10,400	20,800	10,600	10,200	500	300	200
Mar-18	21,600	11,100	10,500	21,000	10,700	10,400	500	400	200
Feb-18	21,300	10,900	10,400	20,700	10,500	10,300	600	400	200
Jan-18	21,400	11,000	10,400	20,700	10,500	10,200	700	500	200
Dec-17	21,500	11,000	10,500	20,700	10,600	10,100	800	400	400
Nov-17	21,900	11,400	10,500	21,100	10,900	10,100	800	400	400
Oct-17	22,000	11,500	10,500	21,300	11,200	10,200	700	300	300
Sep-17	22,200	11,800	10,500	21,600	11,400	10,200	600	400	200
2017	22,000	11,400	10,600	21,200	10,800	10,300	800	500	300
2016	21,400	10,900	10,500	20,200	10,200	10,000	1,200	700	500
2015	20,700	10,900	9,800	19,400	10,200	9,200	1,300	800	500
2014	20,700	10,800	10,000	19,800	10,200	9,600	900	600	300
2013	20,400	10,500	9,900	19,300	9,800	9,500	1,100	700	400
2012	20,800	10,600	10,200	19,300	9,600	9,700	1,500	1,000	500
2011	20,500	10,600	9,900	19,400	9,900	9,500	1,100	600	500
2010	18,900	9,800	9,000	17,500	9,100	8,500	1,300	800	600
2009	18,600	9,600	9,000	17,300	8,800	8,500	1,300	900	500
2008	18,800	9,800	9,000	17,900	9,100	8,800	900	700	300

	Unemployment rate			Participation rate			Employment rate		
	Both sexes	Males	Females	Both sexes	Males	Females	Both sexes	Males	Females
Sep-18	3.2	4.3	1.9	75.3	76.7	74.5	73.2	73.3	73.1
Aug-18	2.2	2.6	1.8	76.6	77.3	76.6	74.9	75.3	75.2
Jul-18	2.2	2.6	x	75.9	77.2	75.2	74.6	75.2	74.5
Jun-18	2.3	3.6	x	75.2	75.2	75.2	73.1	72.5	73.8
May-18	2.8	4.5	x	74.1	75.7	72.4	72.0	72.3	71.7
Apr-18	2.3	2.8	1.9	72.9	73.6	72.2	71.2	71.6	70.8
Mar-18	2.3	3.6	1.9	74.0	75.0	72.9	71.9	72.3	72.2
Feb-18	2.8	3.7	1.9	73.2	74.1	72.2	71.1	71.4	71.5
Jan-18	3.3	4.5	1.9	73.5	74.8	72.2	71.1	71.4	70.8
Dec-17	3.7	3.6	3.8	74.1	74.8	73.4	71.4	72.1	70.6
Nov-17	3.7	3.5	3.8	75.8	78.1	73.4	73.0	74.7	70.6
Oct-17	3.2	2.6	2.9	76.1	78.8	73.4	73.7	76.7	71.3
Sep-17	2.7	3.4	1.9	77.1	80.8	73.4	75.0	78.1	71.3
2017	3.6	4.4	2.8	76.4	78.6	74.6	73.6	74.5	72.5
2016	5.6	6.4	4.8	75.6	76.2	75.0	71.4	71.3	71.4
2015	6.3	7.3	5.1	73.7	76.2	71.0	69.0	71.3	66.7
2014	4.3	5.6	3.0	74.7	76.6	73.5	71.5	72.3	70.6
2013	5.4	6.7	4.0	73.6	74.5	72.8	69.7	69.5	69.9
2012	7.2	9.4	4.9	75.6	75.7	75.6	70.2	68.6	71.9
2011	5.4	5.7	5.1	76.5	77.9	75.0	72.4	72.8	72.0
2010	6.9	8.2	6.7	73.0	74.8	70.3	67.6	69.5	66.4
2009	7.0	9.4	5.6	73.5	74.4	72.6	68.4	68.2	68.5
2008	4.8	7.1	3.3	76.1	77.8	74.4	72.5	72.2	72.7

Note: Data may not add up to the totals due to rounding.

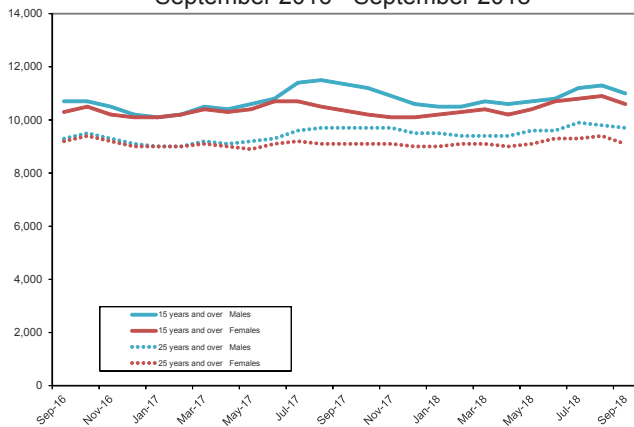
# Labour Force, *Unadjusted*, by Age and Sex, September 2018

		Labour force	Employment	Unemployment	Not in labour force	Unemployment rate	Participation rate	Employment rate
Both Sexes	15 +	22,200	21,600	700	7,300	3.2	75.3	73.2
	15 - 24	2,900	2,700	200	1,500	6.9	65.9	61.4
	25 +	19,300	18,900	500	5,800	2.6	76.9	75.3
	25 - 54	14,400	14,100	300	1,100	2.1	92.9	91.0
	55 +	4,900	4,800	200	4,700	4.1	50.5	49.5
Males	15 +	11,500	11,000	500	3,500	4.3	76.7	73.3
	15 - 24	1,400	1,300	x	900	x	60.9	56.5
	25 +	10,100	9,700	300	2,600	3.0	79.5	76.4
	25 - 54	7,500	7,300	200	200	2.7	97.4	94.8
	55 +	2,600	2,500	x	2,400	x	53.1	51.0
Females	15 +	10,800	10,600	200	3,800	1.9	74.5	73.1
	15 - 24	1,500	1,400	x	500	x	71.4	66.7
	25 +	9,200	9,100	x	3,200	x	73.6	72.8
	25 - 54	6,900	6,800	x	800	x	89.6	88.3
	55 +	2,300	2,300	x	2,400	x	48.9	48.9

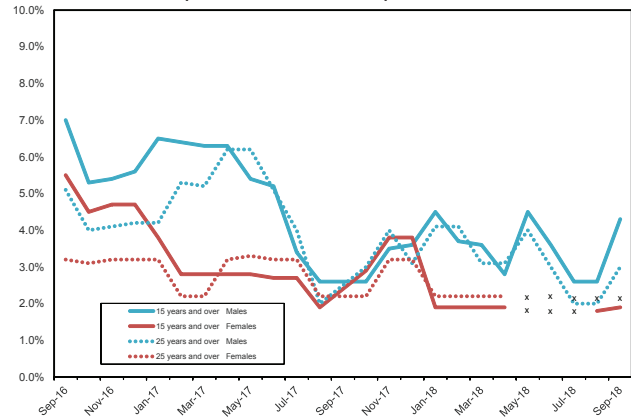
x = suppressed

Note: Data may not add up to the totals due to rounding.

Employment by Age and Sex, September 2016 - September 2018



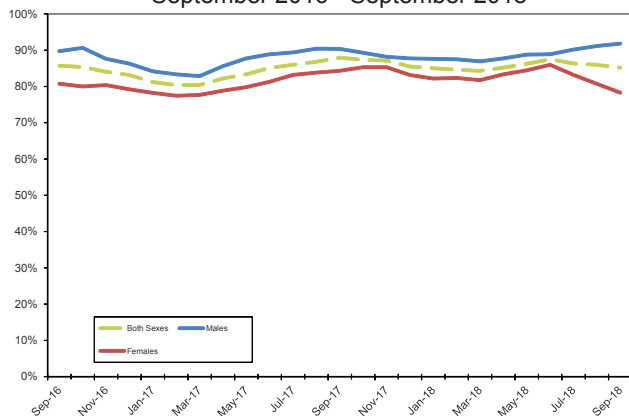
Unemployment Rate by Age and Sex, September 2016 - September 2018



- Comparing September 2018 to August 2018, the unemployment rate for males aged 15 years and over increased from 2.6% to 4.3%, and the rate for males aged 25 years and over increased from 2.0% to 3.0%. Over the same period, the rate for females aged 15 years and over increased from 1.8% to 1.9%. The rate for females aged 25 years and over was suppressed due to the number of unemployed being less than 200.
- The unemployment rate for Yukon's youth (aged 15-24) decreased from 8.3% in December 2017 to lower levels in January through July 2018 that led to a suppression of the rate due to the number of unemployed being less than 200. The unemployment rate for youth increased from 6.5% in August 2018 to 6.9% in September 2018.

## Employment, *Unadjusted*, by Full-time/Part-time, September 2018

Full-time employment as a percentage of all employment, September 2016 - September 2018



- Of employed Yukoners aged 15 years and over, 18,400, or 85.2%, were employed full-time in September 2018. This was the fifth-highest proportion among all other jurisdictions. Nationally, 81.4% of employed Canadians worked full-time in September 2018.
- Of employed Yukon males, 91.8% worked full-time, compared to 78.3% of employed Yukon females.
- Comparing September 2018 to August 2018, full-time employment decreased by 600 to 18,400. Part-time employment increased by 100 to 3,200.

# Employment, *Unadjusted*, by Industry, September 2018

	Both sexes	Males	Females
<b>Total employed</b>	21,600	11,000	10,600
Goods-producing sector	3,800	3,100	600
Forestry, fishing, mining, oil and gas	800	700	200
Construction	2,200	1,900	300
Services-producing sector	17,800	7,900	9,900
Trade	2,500	1,400	1,100
Transportation and warehousing	900	700	300
Finance, insurance, real estate and leasing	500	200	200
Professional, scientific and technical services	800	400	500
Business, building and other support services	500	200	300
Educational services	1,900	900	1,000
Health care and social assistance	3,600	700	2,900
Information, culture and recreation	1,300	800	500
Accommodation and food services	1,400	600	800
Other services	800	300	500
Public administration	3,500	1,600	1,900

**Notes:**

The sum of industries does not equal sector totals as industries with fewer than 500 workers are not shown; row data may not add up to industry totals due to rounding. 'Industry' refers to the general nature of the business carried out by the employer for whom the LFS respondent works (main job only).

- In September 2018, 17,800, or 82.4% of working Yukoners were employed in the services-producing sector, while 3,800, or 17.6%, were employed in the goods-producing sector.

- Of Yukoners working in the goods-producing sector, 57.9% had jobs in the construction industry and 21.1% had jobs in forestry, fishing, mining and oil and gas industry.

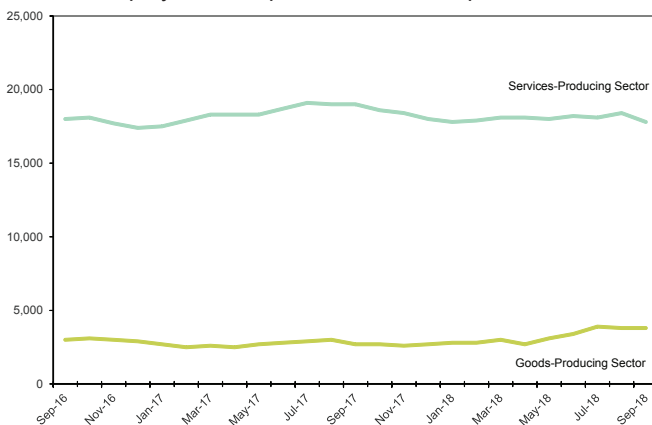
- While females accounted for 55.6% of workers in Yukon's services-producing sector, only 16.2% of the goods-producing sector workers were female.

### Goods- and services-producing sectors

The goods-producing sector includes industries that are involved in extracting resources directly from the earth (e.g. farming, mining, logging) or processing the resources (e.g. utilities, construction, manufacturing). Yukon's goods-producing sector consists primarily of industries in construction and mining.

The services-producing sector includes industries involved in the provision of services.

Goods- and Services-Producing Sectors, Employment, September 2016 - September 2018



- Employment in Yukon's goods-producing sector peaked in August 2012 with 4,000 workers. Employment in the services-producing sector reached a record-high level (19,100) in July 2017.

- Comparing September 2018 to August 2018, employment in the goods-producing sector remained the same at 3,800 and employment in the services-producing sector decreased by 600 to 17,800.

# Public and Private Sectors, *Unadjusted*, September 2018

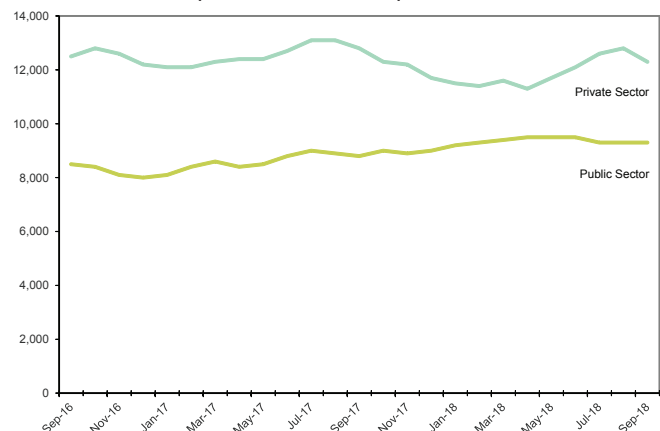
	Both sexes	Males	Females
<b>Total Employed</b>	21,600	11,000	10,600
Public sector employees	9,300	4,200	5,000
Total private sector	12,300	6,800	5,500
Private sector employees	8,700	4,700	4,000
Self-employed	3,600	2,100	1,500

- In September 2018, 43.1% of working Yukoners were employed by one of the four levels of government in the territory.

- In the private sector, 29.3% were self-employed.

- In September 2018, private sector employment decreased by 500, or 3.9%, to 12,300; and public sector employment remained the same at 9,300 compared to August 2018.

Public/Private Sector Employment, September 2016 - September 2018



**Notes:**

'Employees' include full-time, part-time, permanent and temporary employees.

'Public employees' are those who work for: a government at the federal, provincial, territorial, municipal, First Nations or other Aboriginal government level; a government service or agency; a Crown corporation; or for a government funded establishment such as schools (including colleges/universities), hospitals and public libraries.

'Private employees' include all employees who work for private firms or businesses.

# Labour Force Survey Definitions

---

**Employment** — Employed persons are those who, during the reference week, did any work for pay or profit, or had a job and were absent from work.

**Employment rate** — Also referred to as “employment/population ratio,” it is the number of employed persons expressed as a percentage of the population aged 15 years and over. The employment rate for a particular group (for example, women aged 25 years and over) is the number employed in that group expressed as a percentage of the population for that group.

**Goods-Producing Industries** — Goods-Producing Industries (or goods sector, or goods industries): includes agriculture, other primary industries (forestry; fishing and trapping; mines, quarries and oil wells), manufacturing, construction and utilities (electric power, gas and water).

**Labour force** — The labour force is the civilian non-institutional population 15 years of age and over who, during the survey reference week, were employed or unemployed.

**Not in the labour force** — Persons not in the labour force are those who, during the reference week, were unwilling or unable to offer or supply labour services under conditions existing in their labour markets; that is, they were neither employed nor unemployed.

**Participation rate** — The participation rate is the total labour force expressed as a percentage of the population aged 15 years and over. The participation rate for a particular group (for example, women aged 25 years and over) is the labour force in that group expressed as a percentage of the population for that group.

**Reference Week** — The reference week is the entire calendar week (from Sunday to Saturday) covered by the Labour Force Survey each month. It is usually the week containing the 15th day of the month. The interviews are conducted during the following week, called the Survey Week, and the labour force status determined is that of the reference week.

**Seasonal adjustment** — Fluctuations in economic time series are caused by seasonal, cyclical and irregular movements. A seasonally adjusted series is one from which seasonal movements have been eliminated. Seasonal movements are defined as those that are caused

by regular annual events such as climate, holidays, vacation periods and cycles related to crops, production and retail sales associated with Christmas and Easter. It should be noted that the seasonally adjusted series contain irregular as well as longer-term cyclical fluctuations.

**Self-employed** — There are two broad categories of workers: those who work for others and those who work for themselves, namely, the self-employed. The self-employed includes working owners of incorporated businesses, working owners of unincorporated businesses and other self-employed.

**Service-Producing Industries** — Service-Producing Industries (or service sector, or service industries): includes trade; transportation and warehousing; finance, insurance, real estate and leasing; professional, scientific and technical services; management, administrative and other support; educational services; health care and social assistance; information, culture and recreation; accommodation and food services; other services; and public administration.

**Three-Month Moving Average** — All monthly figures for the Territories, whether seasonally adjusted or unadjusted, are three-month moving averages – for example, the March 2011 unemployment rate of 4.5% is actually an average of the unemployment rates for the months of January, February and March. April’s unemployment rate became the average of the rates for February, March and April. Because they are three-month moving averages, the Territories’ figures are not included in the calculation of Canada’s numbers.

**Unemployment** — Unemployed persons are those who, during the reference week, were available for work and were either on temporary layoff, had looked for work in the past four weeks, or had a job to start within the next four weeks.

**Unemployment rate** — The unemployment rate is the number of unemployed persons expressed as a percentage of the labour force. The unemployment rate for a particular group (age, sex, marital status, etc.) is the number unemployed in that group expressed as a percentage of the labour force for that group.

Info sheet no. 35 – October 2018  
Next release date: November 5, 2018



Department of Finance  
Yukon Bureau of Statistics

*Additional information*  
Government of Yukon  
Department of Finance  
Yukon Bureau of Statistics (B-4)  
Box 2703, Whitehorse, Yukon Y1A 2C6  
Telephone: (867) 667-5640; Fax: (867) 393-6203  
email: [ybsinfo@gov.yk.ca](mailto:ybsinfo@gov.yk.ca)  
website: <http://www.eco.gov.yk.ca/stats/ybs.html>