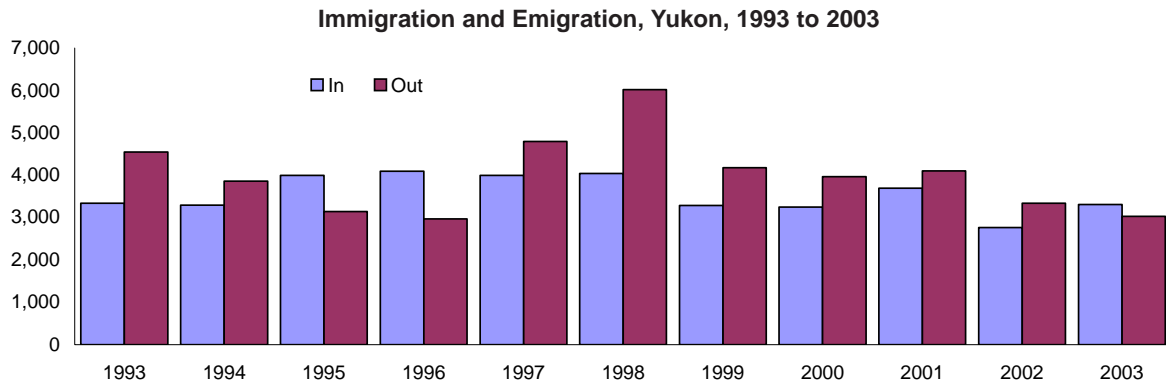


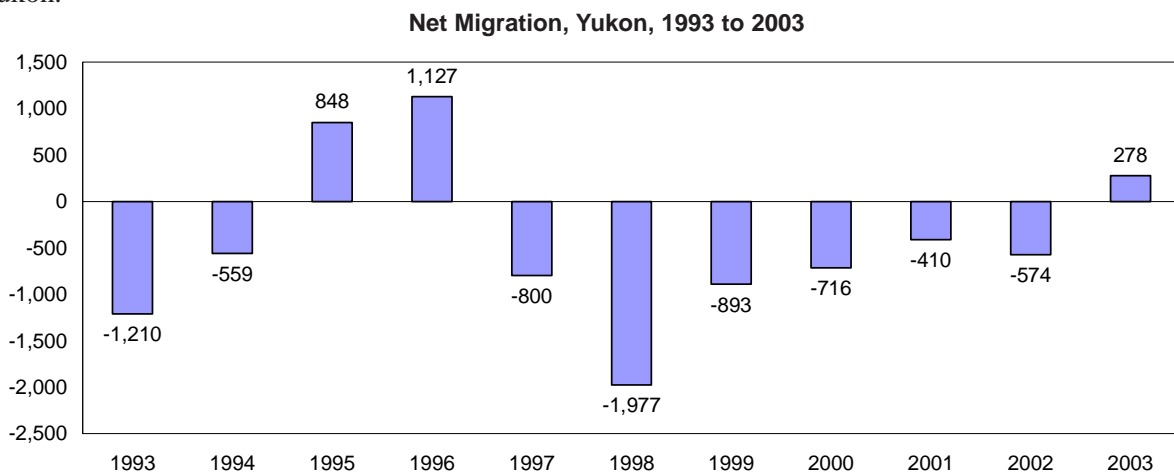
Yukon Migration Patterns 1993-2003

Highlights

This report examines migration patterns in the Yukon and is divided into three sections. The first section looks at immigration and emigration for the Yukon from 1993 to 2003. It examines both quarterly and yearly migration patterns by gender and age. The second section looks at the median length of residency in the Yukon for out-migrants (those who have moved out of the Yukon during the year and not returned) and non-migrants (those who remained resident in the Yukon during the year) by gender, age and ethnicity from 1998 to 2003. The third section compares continuous length of residency in the Yukon in 2003 with 1998, also by gender, age and ethnicity. All of the migration numbers used in this report are based statistically on the Yukon Bureau of Statistics' population data (which are based on the Yukon Health Care registration file).

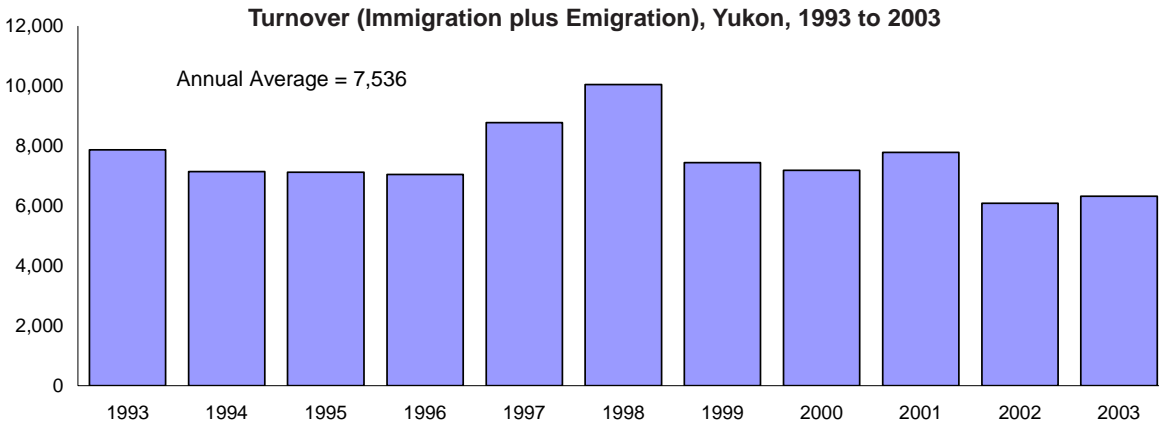


In total, from 1993 through 2003, more people have moved out of the territory than have moved into the territory. However, in 2003, 3,024 people emigrated from the Yukon, while 3,302 people immigrated to the Yukon.

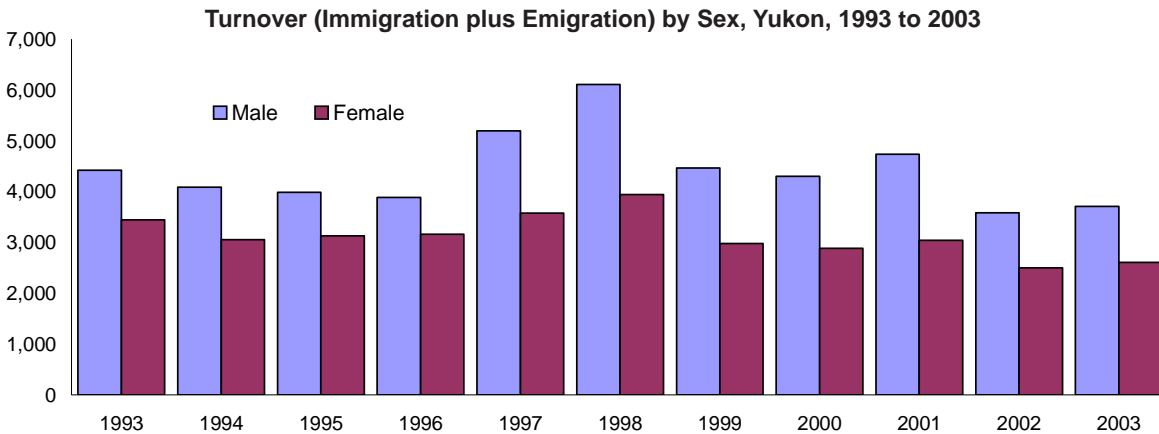


Net migration is the difference between the number of people entering the Yukon (immigration) and the number of people leaving the Yukon (emigration). From 1993 to 2003, average annual net migration for the Yukon was -444. Since 1993, the Yukon has experienced two periods of population growth and two periods of population decline. The largest increase in the Yukon population occurred in 1996 when net migration equalled 1,127, and the largest decrease was in 1998 when net migration was -1,977.

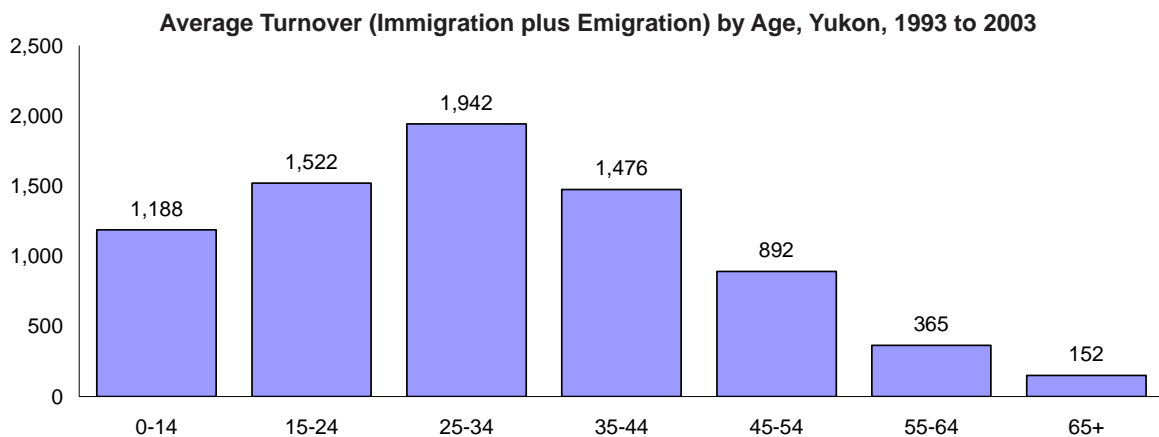
Yearly Turnover



From 1993 to 2003, the average annual turnover (immigration plus emigration) for the Yukon was 7,536. Turnover shows the segment of the population that is mobile and affects things such as the housing market, rental prices and vacancy rates.



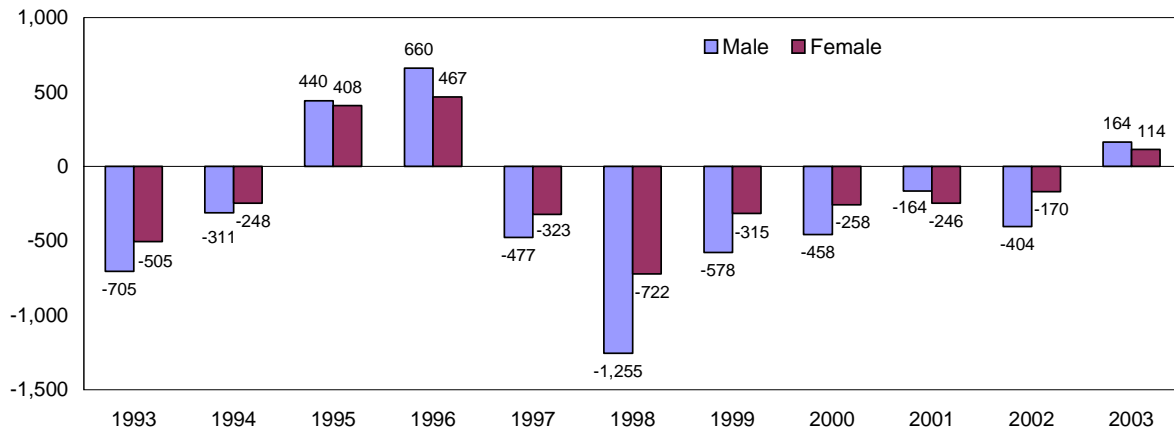
Since 1993, more men than women moved into or out of the territory, indicating that in the Yukon men are more mobile than women. From 1993 to 2003, the average annual turnover was 4,411 for men and 3,125 for women.



People in younger age groups are also more mobile. Average annual turnover from 1993 to 2003 shows that fewer people in age groups 45 - 54, 55 - 64 and 65+ are moving into or out of the territory. The age group with the highest average annual turnover was the 25 - 34 year old age group (1,942).

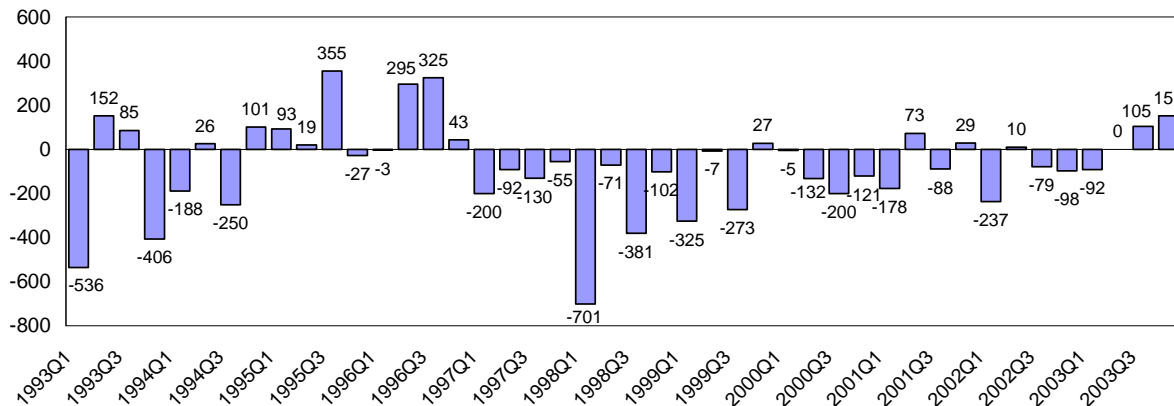
Migration by Sex

Net Migration by Sex, Yukon, 1993 to 2003



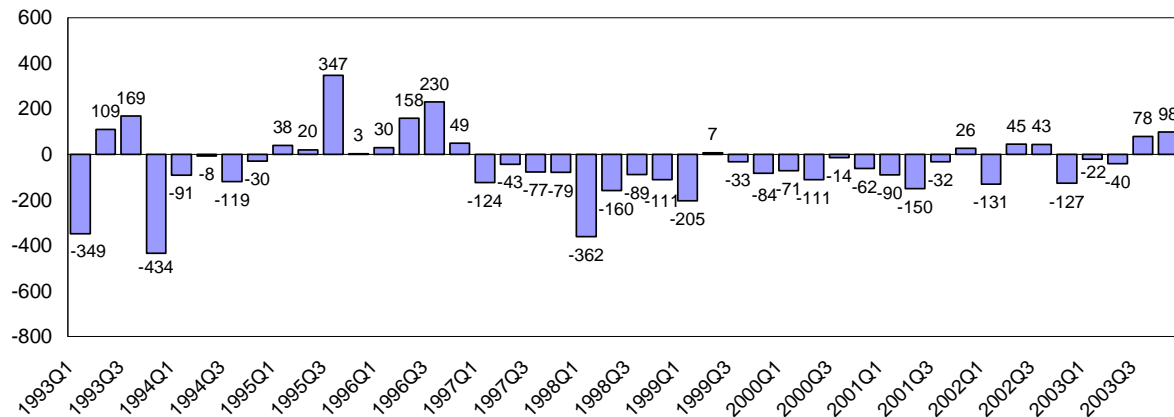
The pattern of net migration is similar for males and females, although males are more mobile, exceeding females in migration in each year except 2001. From 1993 to 2003, average annual net migration was -281 for males and -163 for females. In 2003, net migration for both males and females was positive, for the first time since 1996.

Net Migration, Males, Yukon, 1993 to 2003



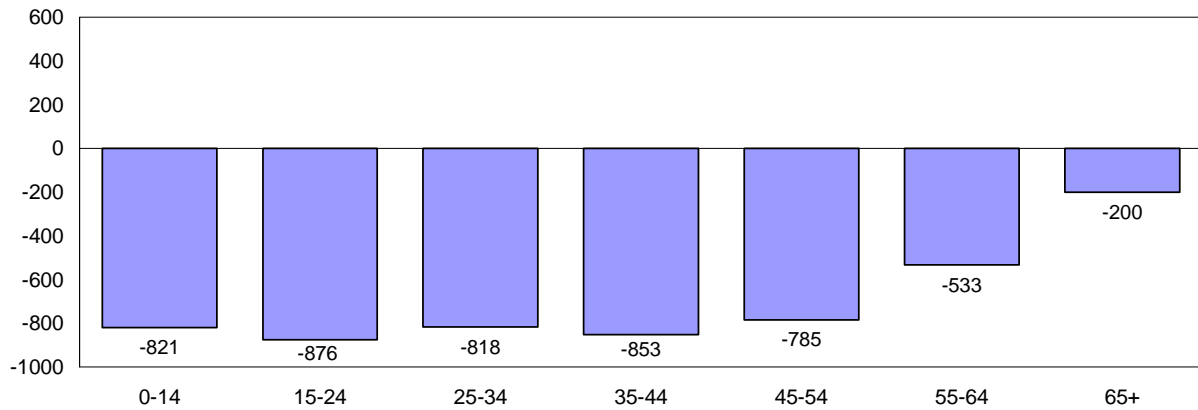
Net migration patterns by quarter are also similar for males and females, although in some quarters net migration for females exceeded net migration for males. From 1993 to 2003, average quarterly net migration was -70 for males and -41 for females.

Net Migration, Females, Yukon, 1993 to 2003



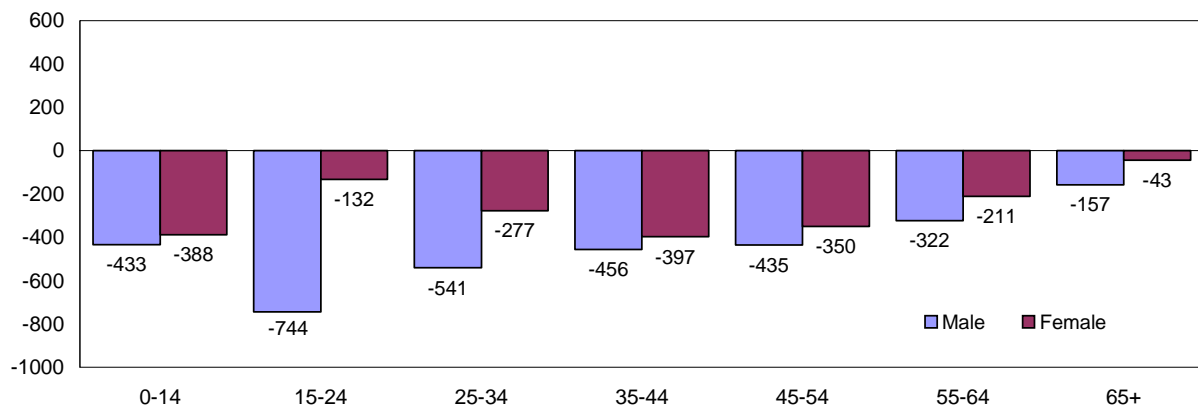
Migration by Age

Total Net Migration by Age, Yukon, 1993 to 2003



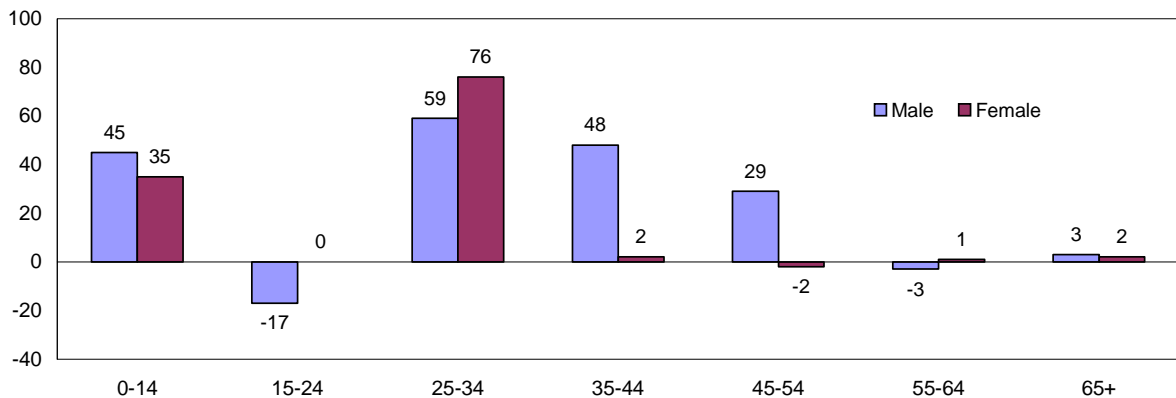
Net migration by age group shows that all age groups decreased between 1993 and 2003. From 1993 to 2003, the age group with the largest decrease in population was the 15-24 year old age group (-876).

Total Net Migration by Age and Sex, Yukon, 1993 to 2003



The pattern of net migration by age is similar for males and females with the exception of the 15 - 24 year old age group, and to a lesser extent the 25 - 34 year old age group. All male and female age groups decreased between 1993 and 2003.

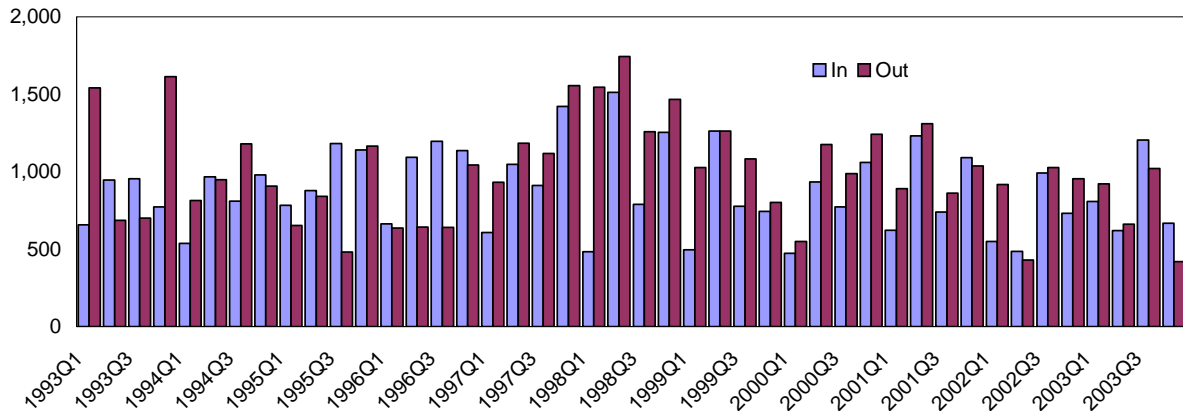
Total Net Migration by Age and Sex, Yukon, 2003



In 2003, net migration by age was positive for both sexes in the 0 - 14, 25 - 34, 35 - 44 and 65+ age group. The age group with the largest positive net migration (+76) was the 25 - 34 year old female category. The largest negative net migration (-17) was in the 15 - 24 year old male category.

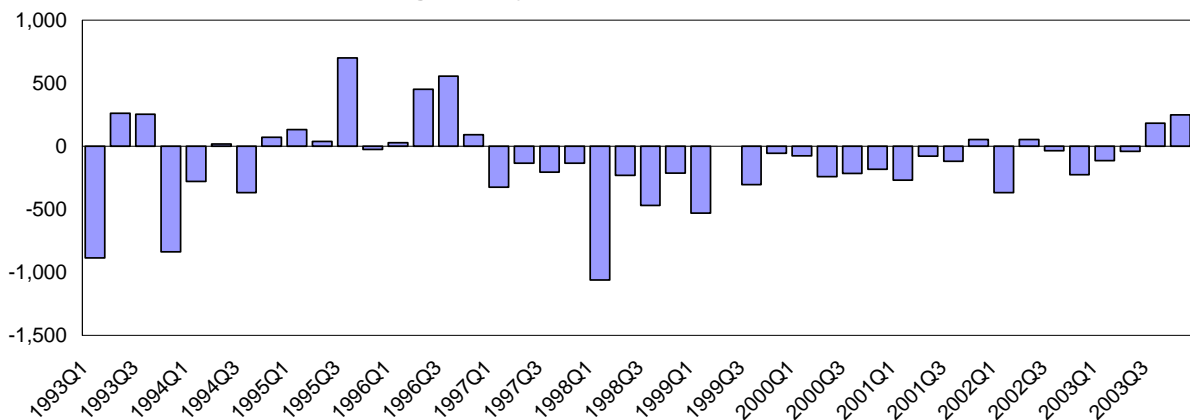
Migration by Quarter

Immigration and Emigration by Quarter, Yukon, 1993 to 2003



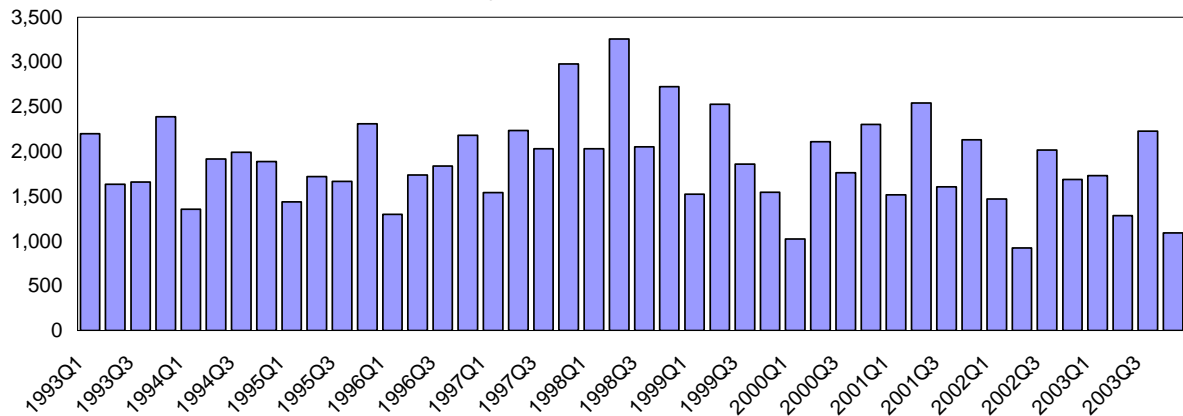
From 1993 to 2003, average quarterly immigration for the Yukon was 886 and average quarterly emigration was 998. In the first two quarters of 2003, more people moved out of the Territory than in to it. In the last two quarters of 2003, this trend was reversed and more people moved in to the Territory than moved out.

Net Migration by Quarter, Yukon, 1993 to 2003



Since 1993, net migration has been positive in 15 quarters and negative or zero in 29 quarters. From 1993 to 2003, average quarterly net migration for the Yukon was -111. Net migration reached a high of 702 in the third quarter of 1995, and a low of -1,063 in the first quarter of 1998.

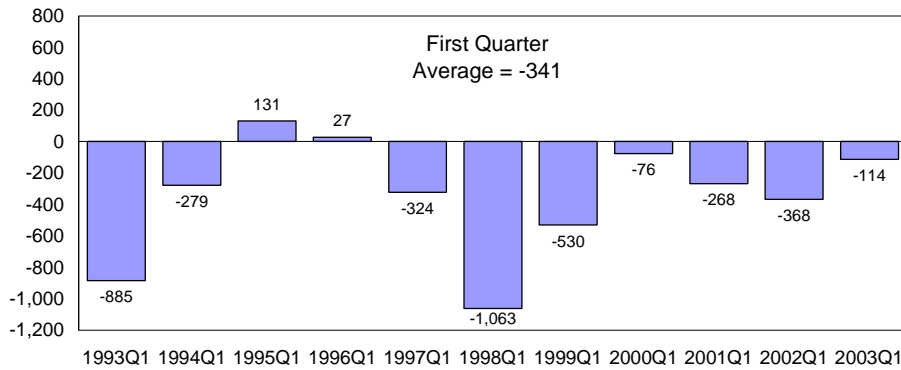
Turnover by Quarter, Yukon, 1993 to 2003



From 1993 to 2003, the average turnover in each quarter was 1,884. Turnover reached a high of 3,255 in the second quarter of 1998 and a low of 919 in the second quarter of 2002.

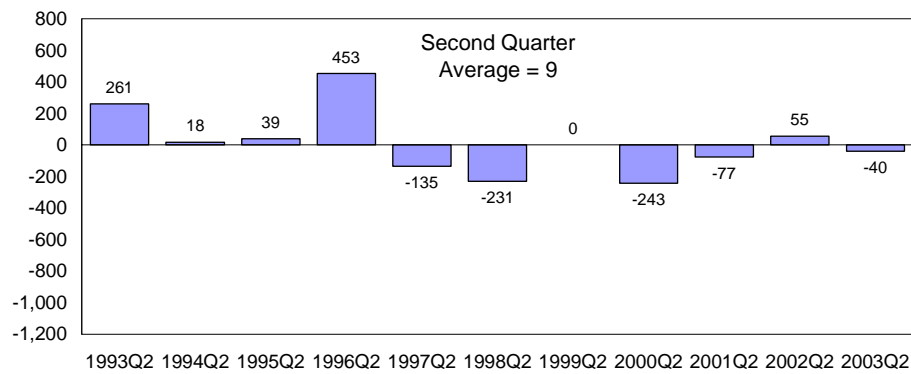
Migration by Quarter

Net Migration by Quarter, Yukon, 1993 to 2003

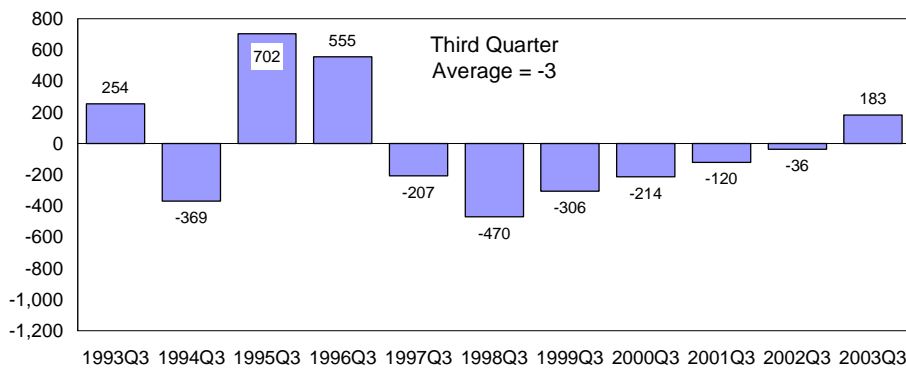


Looking at first quarter data from the years 1993 to 2003, average immigration to the Yukon was 608 and average emigration from the Yukon was 949, resulting in an average net migration of -341. This first quarter average net migration was lower than any other quarter.

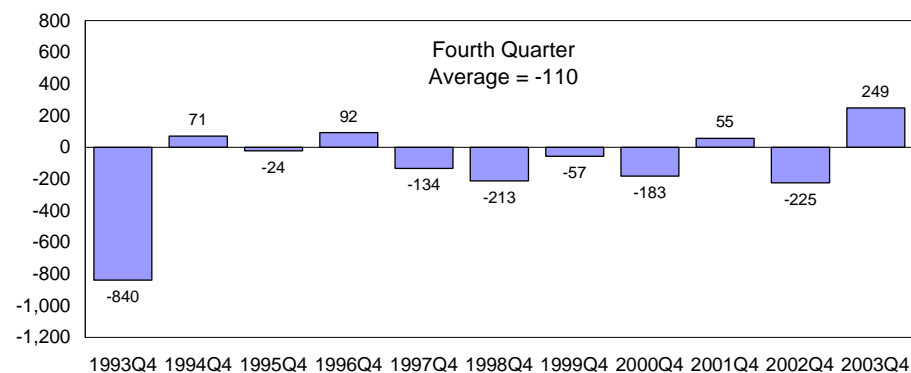
Looking at second quarter data from the years 1993 to 2003, average immigration to the Yukon was 999 and average emigration from the Yukon was 989, resulting in an average net migration of +9. On average, net migration was higher in the second quarter than in any other quarter.



Looking at third quarter data from the years 1993 to 2003, average immigration to the Yukon was 939 and average emigration from the Yukon was 942, resulting in an average net migration of -3. On average, net migration in the third quarter was lower than the second quarter but higher than the first and fourth quarters.

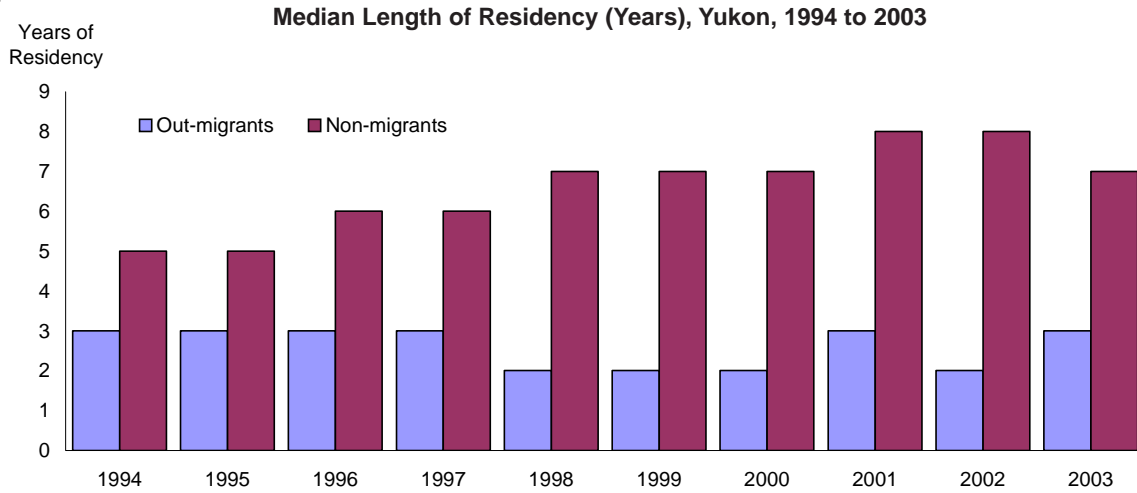


Looking at fourth quarter data from the years 1993 to 2003, average immigration to the Yukon was 1,000 and average emigration from the Yukon was 1,110, resulting in an average net migration of -110. On average, net migration in the fourth quarter was lower than the second and third quarters but higher than the first quarter.



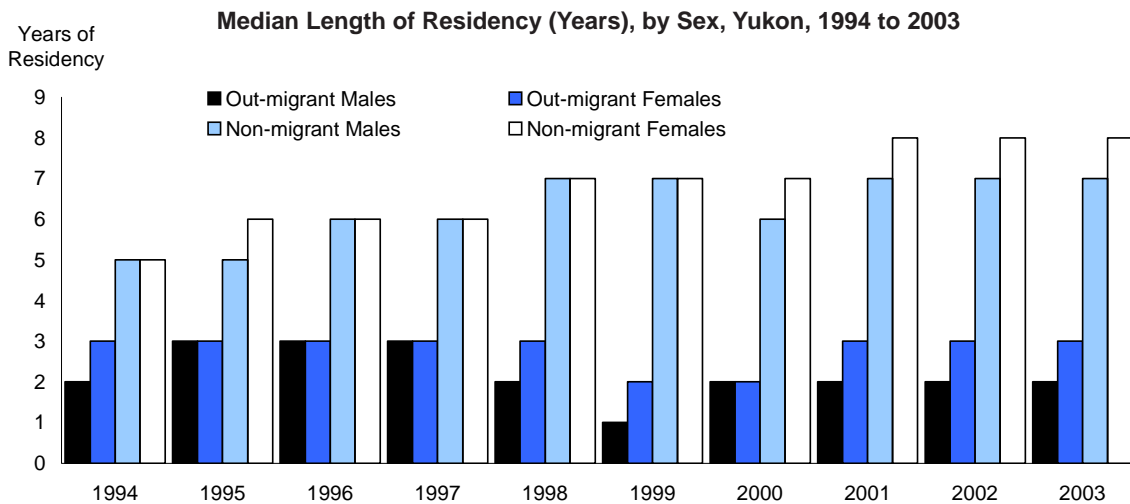
Median Length of Residency

Note: See notes and tables on page 15.



In 2003, the median length of residency for out-migrants (those who moved out of the Yukon during the year) was three years. This was an increase from 2002, when the median length of residency was two years, and is the same as the figure for the year 2001.

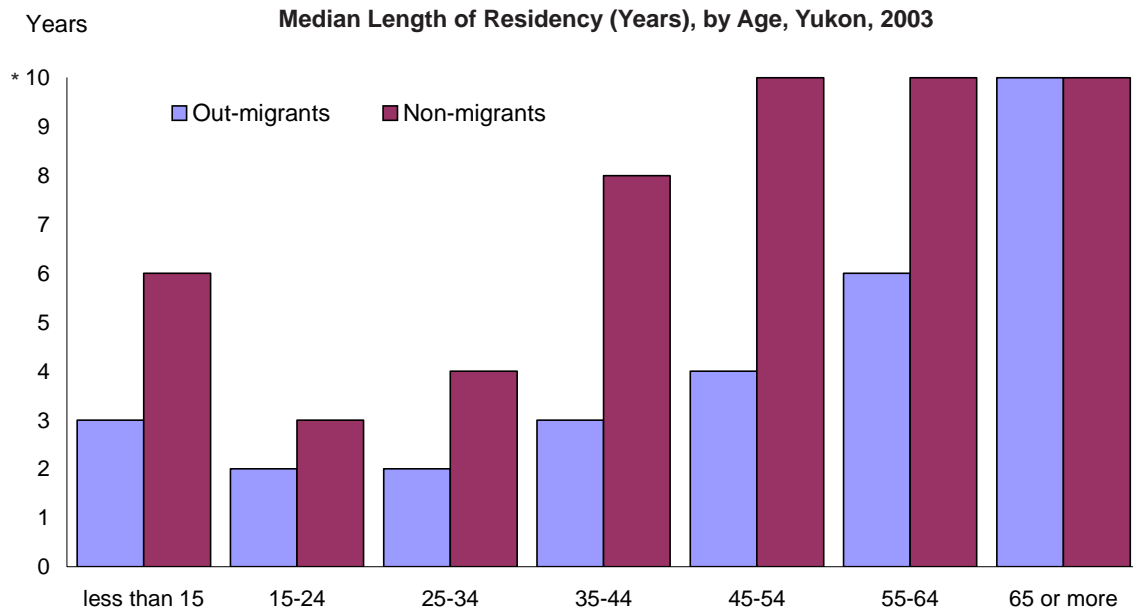
In 2003, the median length of residency for non-migrants (those who remained resident in the Yukon during the year) was seven years. The median length of residency for non-migrants increased steadily from 1994 to 2002. It fell by one year in 2003 from 2002. The out-migrant population in 2003 was slightly less mobile than it was in 2002 and the non-migrant population was slightly more mobile than it was in 2002.



From 1994 to 2003, the median length of residency for out-migrant males and out-migrant females showed that males were slightly more mobile than females. In 2003, the median length of residency for out-migrant males was two years, with three years for females.

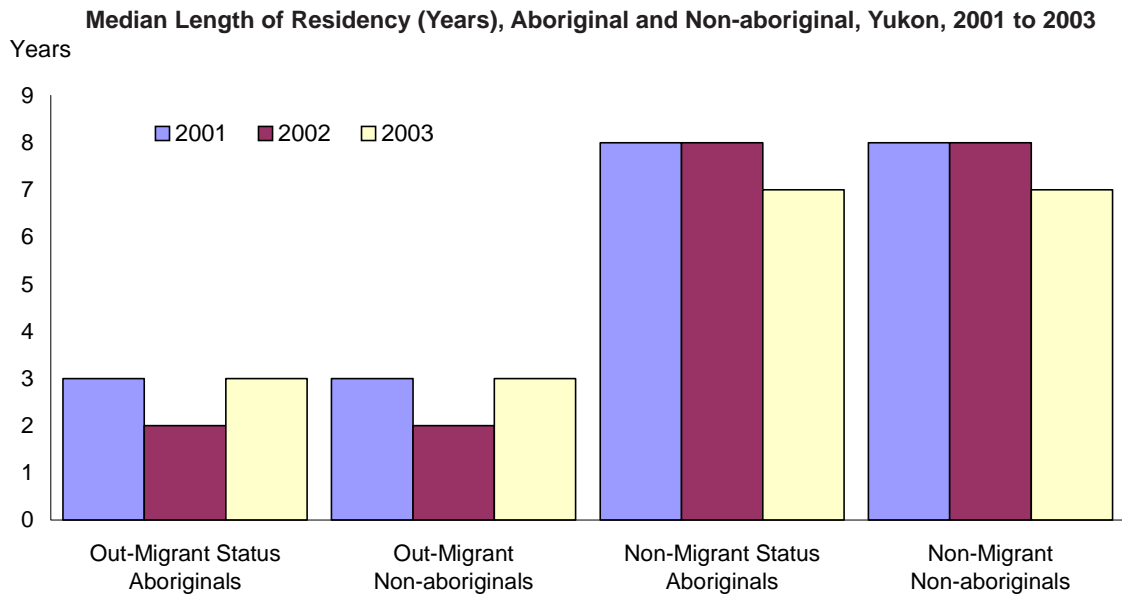
Non-migrant males and non-migrant females also have similar migration patterns. In 2003, the median length of residency for non-migrant males was seven years, with eight years for females.

Median Length of Residency



* Refers to median length of residency as 10 or more years. Data after ten years is limited by the Yukon Health Care Registration file.

The median length of residency for out-migrants and non-migrants generally increases with age. People in younger age groups are more mobile than people in older age groups. In each age group, out-migrants are more mobile than non-migrants. From 1994 to 2003, the median length of residency for non-migrants over 55 years of age has been 10 or more years.

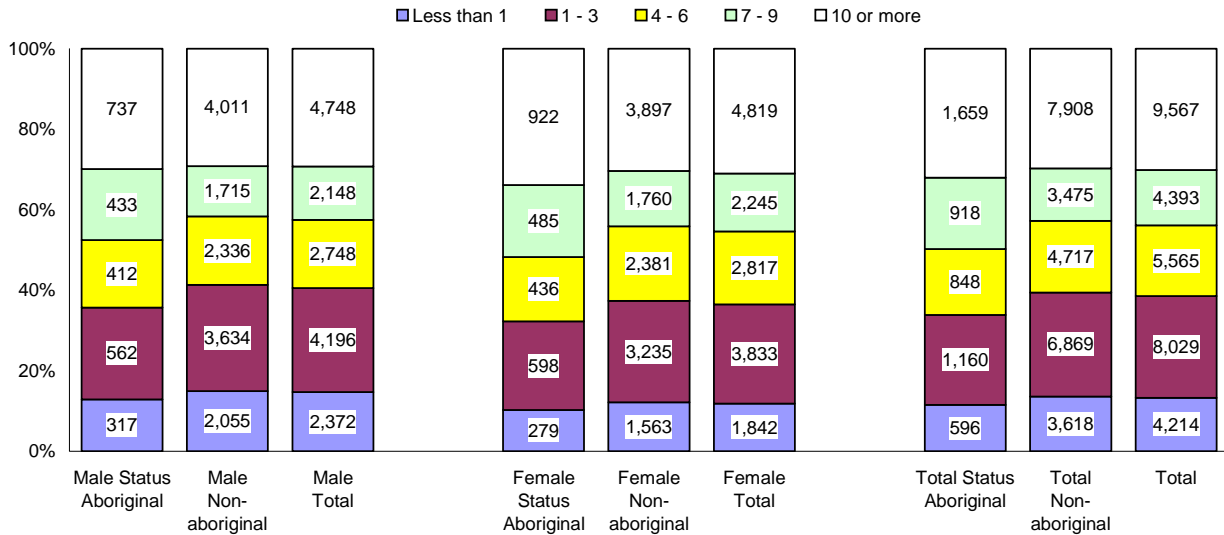


From 2001 to 2003, the median length of residency for Aboriginal out-migrants and Non-aboriginal out-migrants showed that Aboriginals were equally mobile as Non-aboriginal out-migrants. In 2003, the median length of residency for both Aboriginal and Non-aboriginal out-migrants was three years.

From 2001 to 2003, the median length of residency for Aboriginal non-migrants was equal to that of Non-aboriginal non-migrants. In 2003, the median length of residency for both Aboriginal and Non-aboriginal non-migrants was seven years.

Length of Continuous Residency

Length of Continuous Residency (Years), Aboriginal and Non-aboriginal, by Sex, Yukon, 1998

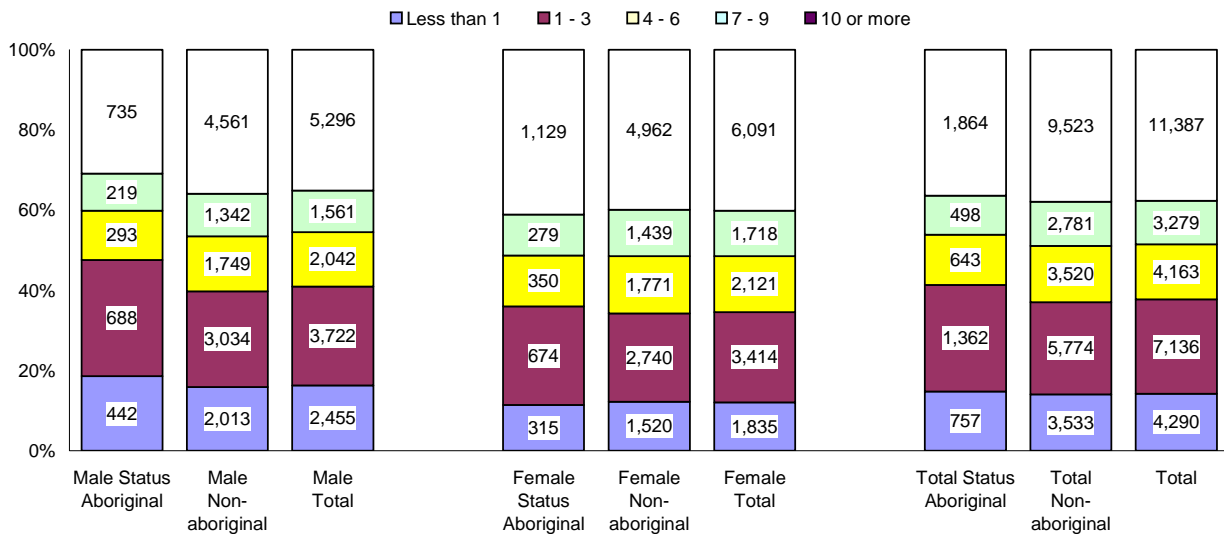


In 2003, all “total” residency groupings declined compared with 1998, except for the “less than one year” and the “10 or more years” residency groupings. This may be due to a combination of factors: people in the other residency groups emigrated from the Yukon between 1998 and 2003 or their length of continuous residency increased.

The 10 years or more group increased by 1,820 people, or 19.0%, when comparing 1998 to 2003. The largest decrease was in the 4 - 6 year group, which decreased by 1,402 people, or 25.2%. Comparing 1998 to 2003, there was also a slight increase in the number of people whose continuous length of residency was less than one year, indicating that more people are immigrating to the Yukon.

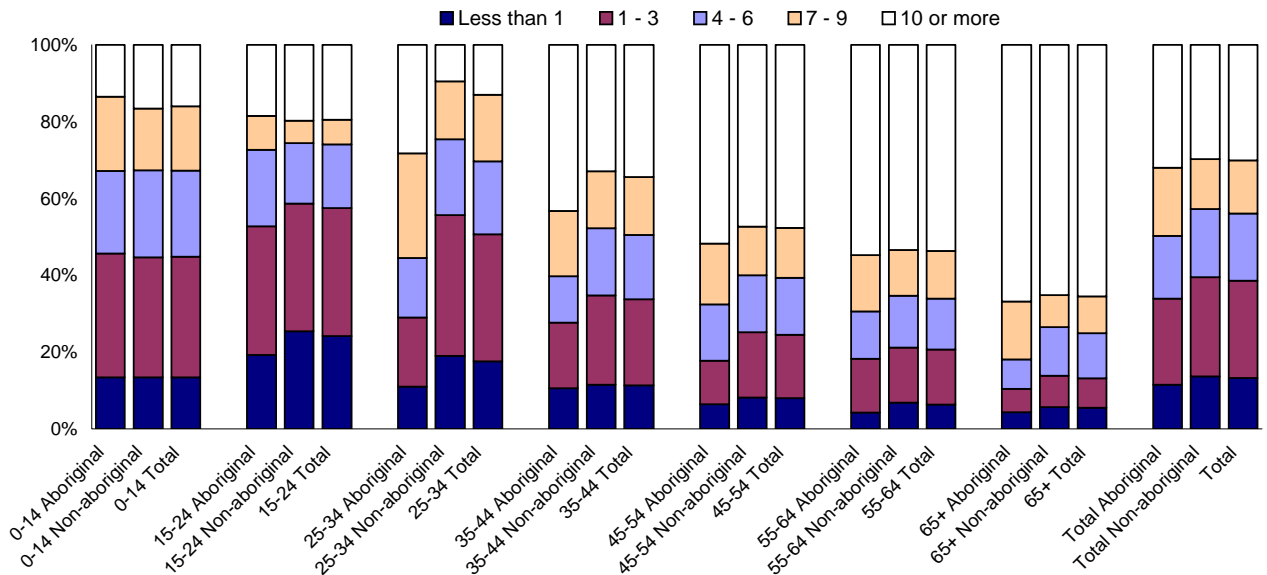
There is no significant difference between the percentage of status aboriginals (36.4%) in residency group 10 or more years when compared with Non-aboriginal residents (37.9%). There also is a slightly larger percentage of females (40.1%) in residency group 10 or more years when compared with male residents (35.1%). This indicates that females are slightly less mobile than males.

Length of Continuous Residency (Years), Aboriginal and Non-aboriginal, by Sex, Yukon, 2003



Length of Continuous Residency

Length of Continuous Residency (Years), Aboriginal and Non-aboriginal, by Age, Yukon, 1998

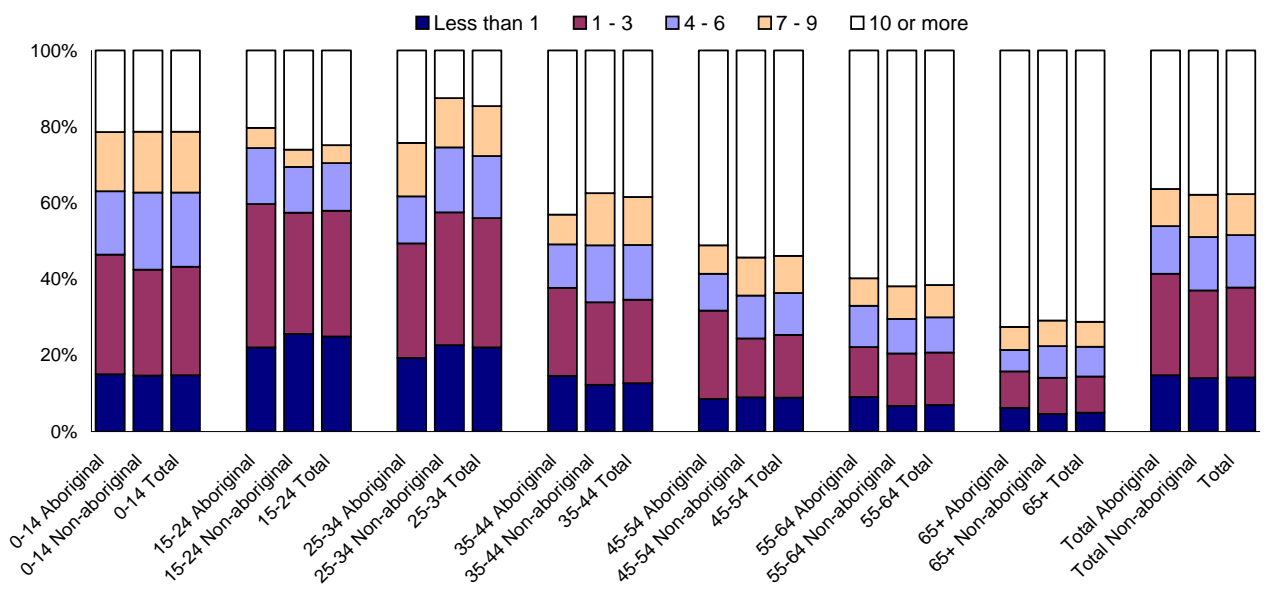


The length of continuous residency for status Aboriginals and Non-aboriginals generally increases with age. People in younger age groups are more mobile than people in older age groups. In 2003, over 65% of residents older than 55 were continuous residents in the Yukon for 10 years or more. For the 25-34 year old age group, only 14.6% had lived in the Yukon for 10 or more years.

The most mobile age group in 2003 in the Yukon is the 25 - 34 year old group. This group has the lowest percentage of people who have lived in the Yukon continuously for 10 or more years. The 15-24 year old age group has a high percentage of people who have lived in the Yukon for less than one year. Status Aboriginals are less mobile than Non-aboriginals in the 25 - 34, 35 - 44 and 65+ year old age groups.

From 1998 to 2003, the number of people that have lived in the Yukon continuously for 10 or more years increased in each age group, with the exception of the 25 - 34 and 35 - 44 year old groups.

Length of Continuous Residency (Years), Aboriginal and Non-aboriginal, by Age, Yukon, 2003



Immigration—Tables

	Male								Total	Female								Total
	0 - 14	15 - 24	25 - 34	35 - 44	45 - 54	55 - 64	65+	0 - 14		15 - 24	25 - 34	35 - 44	45 - 54	55 - 64	65+			
1995Q1	72	87	115	95	46	12	7	434	1995Q1	74	75	93	63	31	10	4	350	
1995Q2	72	93	151	117	55	17	7	512	1995Q2	66	85	107	59	34	12	4	367	
1995Q3	137	94	149	108	76	32	9	605	1995Q3	150	128	136	89	53	12	10	578	
1995Q4	127	112	189	129	77	24	6	664	1995Q4	102	96	135	83	41	15	5	477	
1995	408	386	604	449	254	85	29	2,215	1995	392	384	471	294	159	49	23	1,772	
1996Q1	49	63	104	74	51	12	3	356	1996Q1	77	64	82	49	25	8	2	307	
1996Q2	71	146	170	146	79	24	10	646	1996Q2	71	99	114	93	49	13	10	449	
1996Q3	149	98	162	122	76	29	4	640	1996Q3	114	116	151	103	54	13	5	556	
1996Q4	109	114	179	125	67	28	10	632	1996Q4	104	119	134	75	40	22	10	504	
1996	378	421	615	467	273	93	27	2,274	1996	366	398	481	320	168	56	27	1,816	
1997Q1	43	70	99	70	46	9	2	339	1997Q1	54	52	72	48	29	9	5	269	
1997Q2	94	97	175	126	87	23	12	614	1997Q2	76	96	125	77	37	12	12	435	
1997Q3	123	87	121	104	55	17	8	515	1997Q3	84	85	102	71	37	14	3	396	
1997Q4	93	149	234	219	126	58	15	894	1997Q4	88	106	145	95	58	26	10	528	
1997	353	403	629	519	314	107	37	2,362	1997	302	339	444	291	161	61	30	1,628	
1998Q1	50	44	68	70	27	6	5	270	1998Q1	46	50	54	37	17	6	4	214	
1998Q2	62	194	293	217	114	57	30	967	1998Q2	68	140	129	109	54	24	21	545	
1998Q3	76	72	85	88	54	16	5	396	1998Q3	77	89	93	78	39	9	9	394	
1998Q4	76	176	217	178	101	35	12	795	1998Q4	72	101	127	91	42	20	7	460	
1998	264	486	663	553	296	114	52	2,428	1998	263	380	403	315	152	59	41	1,613	
1999Q1	31	54	88	58	35	7	2	275	1999Q1	46	44	57	41	23	6	5	222	
1999Q2	57	165	235	177	121	48	11	814	1999Q2	67	94	107	85	56	26	13	448	
1999Q3	74	63	96	101	62	28	6	430	1999Q3	63	76	92	64	35	12	5	347	
1999Q4	73	85	112	77	57	14	9	427	1999Q4	58	63	86	58	38	6	8	317	
1999	235	367	531	413	275	97	28	1,946	1999	234	277	342	248	152	50	31	1,334	
2000Q1	38	51	82	48	31	13	6	269	2000Q1	38	38	49	36	34	5	5	205	
2000Q2	48	113	158	125	68	30	19	561	2000Q2	72	81	76	67	41	18	17	372	
2000Q3	65	76	103	92	47	31	14	428	2000Q3	55	77	84	58	48	13	10	345	
2000Q4	50	147	168	169	83	40	9	666	2000Q4	58	92	108	75	44	8	9	394	
2000	201	387	511	434	229	114	48	1,924	2000	223	288	317	236	167	44	41	1,316	
2001Q1	35	74	106	86	44	18	5	368	2001Q1	54	56	64	38	25	13	5	255	
2001Q2	34	172	224	208	136	51	13	838	2001Q2	38	96	86	86	56	19	13	394	
2001Q3	53	87	112	90	52	31	10	435	2001Q3	54	74	63	61	38	10	6	306	
2001Q4	65	152	160	136	84	46	4	647	2001Q4	71	95	122	75	54	18	10	445	
2001	187	485	602	520	316	146	32	2,288	2001	217	321	335	260	173	60	34	1,400	
2002Q1	45	60	94	76	33	16	2	326	2002Q1	36	44	55	48	30	8	3	224	
2002Q2	37	31	83	55	47	26	6	285	2002Q2	32	50	47	30	26	10	7	202	
2002Q3	76	109	121	117	67	42	12	544	2002Q3	86	96	96	94	48	17	10	447	
2002Q4	61	81	104	97	63	17	14	437	2002Q4	52	60	73	45	45	11	8	294	
2002	219	281	402	345	210	101	34	1,592	2002	206	250	271	217	149	46	28	1,167	
2003Q1	62	99	127	90	60	36	12	486	2003Q1	53	60	91	62	33	16	7	322	
2003Q2	34	66	87	88	59	22	9	365	2003Q2	41	50	76	45	23	14	7	256	
2003Q3	96	151	183	142	105	43	8	728	2003Q3	87	97	112	79	58	30	13	476	
2003Q4	52	55	66	70	74	29	15	361	2003Q4	51	53	82	49	48	16	9	308	
2003	244	371	463	390	298	130	44	1,940	2003	232	260	361	235	162	76	36	1,362	
	Total									Total								
	0 - 14	15 - 24	25 - 34	35 - 44	45 - 54	55 - 64	65+	Total		0 - 14	15 - 24	25 - 34	35 - 44	45 - 54	55 - 64	65+	Total	
1995Q1	146	162	208	158	77	22	11	784	2000Q1	76	89	131	84	65	18	11	474	
1995Q2	138	178	258	176	89	29	11	879	2000Q2	120	194	234	192	109	48	36	933	
1995Q3	287	222	285	197	129	44	19	1,183	2000Q3	120	153	187	150	95	44	24	773	
1995Q4	229	208	324	212	118	39	11	1,141	2000Q4	108	239	276	244	127	48	18	1,060	
1995	800	770	1,075	743	413	134	52	3,987	2000	424	675	828	670	396	158	89	3,240	
1996Q1	126	127	186	123	76	20	5	663	2001Q1	89	130	170	124	69	31	10	623	
1996Q2	142	245	284	239	128	37	20	1,095	2001Q2	72	268	310	294	192	70	26	1,232	
1996Q3	263	214	313	225	130	42	9	1,196	2001Q3	107	161	175	151	90	41	16	741	
1996Q4	213	233	313	200	107	50	20	1,136	2001Q4	136	247	282	211	138	64	14	1,092	
1996	744	819	1,096	787	441	149	54	4,090	2001	404	806	937	780	489	206	66	3,688	
1997Q1	97	122	171	118	75	18	7	608	2002Q1	81	104	149	124	63	24	5	550	
1997Q2	170	193	300	203	124	35	24	1,049	2002Q2	69	81	130	85	73	36	13	487	
1997Q3	207	172	223	175	92	31	11	911	2002Q3	162	205	217	211	115	59	22	991	
1997Q4	181	255	379	314	184	84	25	1,422	2002Q4	113	141	177	142	108	28	22	731	
1997	655	742	1,073	810	475	168	67	3,990	2002	425	531	673	562	359	147	62	2,759	
1998Q1	96	94	122	107	44	12	9	484	2003Q1	115	159	218	152	93	52	19	808	
1998Q2	130	334	422	326	168	81	51	1,512	2003Q2	75	116	163	133	82	36	16	621	
1998Q3	153	161	178	166	93	25	14	790	2003Q3	183	248	295	221	163	73	21	1,204	
1998Q4	148	277	344	269	143	55	19	1,255	2003Q4	103	108	148	119	122	45	24	669	
1998	527	866	1,066	868	448	173	93	4,041	2003	476	631	824	625	460	206	80	3,302	
1999Q1	77	98	145	99	58	13	7	497										
1999Q2	124	259	342	262	177	74	24	1,262										
1999Q3	137	139	188	165	97	40	11	777										
1999Q4	131	148	198	135	95	20	17	744										
1999	469	644	873	661	427	147	59	3,280										

Emigration—Tables

Male									Female								
	0 - 14	15 - 24	25 - 34	35 - 44	45 - 54	55 - 64	65+	Total		0 - 14	15 - 24	25 - 34	35 - 44	45 - 54	55 - 64	65+	Total
1995Q1	78	55	85	63	44	16	0	341	1995Q1	66	47	92	70	21	11	5	312
1995Q2	72	84	153	104	49	28	3	493	1995Q2	73	73	99	60	26	10	6	347
1995Q3	60	54	48	40	30	8	10	250	1995Q3	50	38	55	48	31	6	3	231
1995Q4	97	149	183	145	80	29	8	691	1995Q4	84	104	124	89	48	17	8	474
1995	307	342	469	352	203	81	21	1,775	1995	273	262	370	267	126	44	22	1,364
1996Q1	53	69	103	72	36	16	10	359	1996Q1	58	49	86	39	25	13	7	277
1996Q2	45	55	96	87	42	22	4	351	1996Q2	51	59	71	59	26	21	4	291
1996Q3	75	46	77	67	29	17	4	315	1996Q3	65	64	82	61	36	12	6	326
1996Q4	91	102	150	109	86	38	13	589	1996Q4	103	85	113	74	56	18	6	455
1996	264	272	426	335	193	93	31	1,614	1996	277	257	352	233	143	64	23	1,349
1997Q1	85	92	148	107	62	31	14	539	1997Q1	79	74	104	73	34	17	12	393
1997Q2	100	119	165	169	90	53	10	706	1997Q2	89	83	124	91	65	13	13	478
1997Q3	98	108	152	142	95	31	19	645	1997Q3	92	89	128	86	53	26	-1	473
1997Q4	101	195	261	198	108	49	37	949	1997Q4	91	160	133	89	78	28	28	607
1997	384	514	726	616	355	164	80	2,839	1997	351	406	489	339	230	84	52	1,951
1998Q1	114	177	267	191	143	49	30	971	1998Q1	119	107	156	92	63	27	12	576
1998Q2	157	228	250	212	127	61	3	1,038	1998Q2	140	150	186	128	74	27	0	705
1998Q3	90	140	241	161	91	41	13	777	1998Q3	79	96	125	91	42	35	15	483
1998Q4	119	182	224	186	126	51	9	897	1998Q4	104	114	119	115	78	31	10	571
1998	480	727	982	750	487	202	55	3,683	1998	442	467	586	426	257	120	37	2,335
1999Q1	77	102	148	139	84	38	12	600	1999Q1	83	79	98	89	49	22	7	427
1999Q2	52	171	255	171	110	44	18	821	1999Q2	38	116	115	91	51	16	14	441
1999Q3	85	125	195	145	92	41	20	703	1999Q3	72	65	87	69	53	20	14	380
1999Q4	110	71	85	76	45	12	1	400	1999Q4	114	72	85	79	34	17	0	401
1999	324	469	683	531	331	135	51	2,524	1999	307	332	385	328	187	75	35	1,649
2000Q1	64	39	65	53	37	9	7	274	2000Q1	64	40	68	55	38	5	6	276
2000Q2	79	131	169	150	100	46	18	693	2000Q2	77	100	124	96	56	20	10	483
2000Q3	48	149	154	153	73	42	9	628	2000Q3	42	87	92	68	47	15	8	359
2000Q4	63	174	207	159	125	42	17	787	2000Q4	54	110	109	100	53	17	13	456
2000	254	493	595	515	335	139	51	2,382	2000	237	337	393	319	194	57	37	1,574
2001Q1	77	122	120	121	69	30	7	546	2001Q1	54	76	95	57	39	16	8	345
2001Q2	100	196	160	153	82	48	26	765	2001Q2	101	128	121	90	71	23	10	544
2001Q3	68	110	136	113	60	29	7	523	2001Q3	57	75	77	66	45	13	5	338
2001Q4	85	131	163	118	80	25	16	618	2001Q4	74	79	86	90	55	23	12	419
2001	330	559	579	505	291	132	56	2,452	2001	286	358	379	303	210	75	35	1,646
2002Q1	55	134	139	122	67	32	14	563	2002Q1	56	83	87	64	39	15	11	355
2002Q2	23	59	85	35	40	24	9	275	2002Q2	16	36	38	27	22	12	6	157
2002Q3	51	143	146	122	91	56	14	623	2002Q3	66	83	106	53	50	34	12	404
2002Q4	84	106	101	108	69	51	16	535	2002Q4	86	88	78	78	58	23	10	421
2002	213	442	471	387	267	163	53	1,996	2002	224	290	309	222	169	84	39	1,337
2003Q1	52	130	138	125	92	33	8	578	2003Q1	37	80	72	69	49	24	13	344
2003Q2	49	68	83	63	51	44	7	365	2003Q2	57	46	74	53	41	18	7	296
2003Q3	53	162	140	122	90	39	17	623	2003Q3	57	105	93	76	41	17	9	398
2003Q4	45	28	43	32	36	17	9	210	2003Q4	46	29	46	35	33	16	5	210
2003	199	388	404	342	269	133	41	1,776	2003	197	260	285	233	164	75	34	1,248

Total									Total								
	0 - 14	15 - 24	25 - 34	35 - 44	45 - 54	55 - 64	65+	Total		0 - 14	15 - 24	25 - 34	35 - 44	45 - 54	55 - 64	65+	Total
1995Q1	144	102	177	133	65	27	5	653	2000Q1	128	79	133	108	75	14	13	550
1995Q2	145	157	252	164	75	38	9	840	2000Q2	156	231	293	246	156	66	28	1,176
1995Q3	110	92	103	88	61	14	13	481	2000Q3	90	236	246	221	120	57	17	987
1995Q4	181	253	307	234	128	46	16	1,165	2000Q4	117	284	316	259	178	59	30	1,243
1995	580	604	839	619	329	125	43	3,139	2000	491	830	988	834	529	196	88	3,956
1996Q1	111	118	189	111	61	29	17	636	2001Q1	131	198	215	178	108	46	15	891
1996Q2	96	114	167	146	68	43	8	642	2001Q2	201	324	281	243	153	71	36	1,309
1996Q3	140	110	159	128	65	29	10	641	2001Q3	125	185	213	179	105	42	12	861
1996Q4	194	187	263	183	142	56	19	1,044	2001Q4	159	210	249	208	135	48	28	1,037
1996	541	529	778	568	336	157	54	2,963	2001	616	917	958	808	501	207	91	4,098
1997Q1	164	166	252	180	96	48	26	932	2002Q1	111	217	226	186	106	47	25	918
1997Q2	189	202	289	260	155	66	23	1,184	2002Q2	39	95	123	62	62	36	15	432
1997Q3	190	197	280	228	148	57	18	1,118	2002Q3	117	226	252	175	141	90	26	1,027
1997Q4	192	355	394	287	186	77	65	1,556	2002Q4	170	194	179	186	127	74	26	956
1997	735	920	1,215	955	585	248	132	4,790	2002	437	732	780	609	436	247	92	3,333
1998Q1	233	284	423	283	206	76	42	1,547	2003Q1	89	210	210	194	141	57	21	922
1998Q2	297	378	436	340	201	88	3	1,743	2003Q2	106	114	157	116	92	62	14	661
1998Q3	169	236	366	252	133	76	28	1,260	2003Q3	110	267	233	198	131	56	26	1,021
1998Q4	223	296	343	301	204	82	19	1,468	2003Q4	91	57	89	67	69	33	14	420
1998	922	1,194	1,568	1,176	744	322	92	6,018	2003	396	648	689	575	433	208	75	3,024
1999Q1	160	181	246	228	133	60	19	1,027									
1999Q2	90	287	370	262	161	60	32	1,262									
1999Q3	157	190	282	214	145	61	34	1,083									
1999Q4	224	143	170	155	79	29	1	801									
1999	631	801	1,068	859	518	210	86	4,173									

Net Migration—Tables

	Male								Total	Female								Total
	0 - 14	15 - 24	25 - 34	35 - 44	45 - 54	55 - 64	65+	0 - 14		15 - 24	25 - 34	35 - 44	45 - 54	55 - 64	65+			
1995Q1	-6	32	30	32	2	-4	7	93	1995Q1	8	28	1	-7	10	-1	-1	38	
1995Q2	0	9	-2	13	6	-11	4	19	1995Q2	-7	12	8	-1	8	2	-2	20	
1995Q3	77	40	101	68	46	24	-1	355	1995Q3	100	90	81	41	22	6	7	347	
1995Q4	30	-37	6	-16	-3	-5	-2	-27	1995Q4	18	-8	11	-6	-7	-2	-3	3	
1995	101	44	135	97	51	4	8	440	1995	119	122	101	27	33	5	1	408	
1996Q1	-4	-6	1	2	15	-4	-7	-3	1996Q1	19	15	-4	10	0	-5	-5	30	
1996Q2	26	91	74	59	37	2	6	295	1996Q2	20	40	43	34	23	-8	6	158	
1996Q3	74	52	85	55	47	12	0	325	1996Q3	49	52	69	42	18	1	-1	230	
1996Q4	18	12	29	16	-19	-10	-3	43	1996Q4	1	34	21	1	-16	4	4	49	
1996	114	149	189	132	80	0	-4	660	1996	89	141	129	87	25	-8	4	467	
1997Q1	-42	-22	-49	-37	-16	-22	-12	-200	1997Q1	-25	-22	-32	-25	-5	-8	-7	-124	
1997Q2	-6	-22	10	-43	-3	-30	2	-92	1997Q2	-13	13	1	-14	-28	-1	-1	-43	
1997Q3	25	-21	-31	-38	-40	-14	-11	-130	1997Q3	-8	-4	-26	-15	-16	-12	4	-77	
1997Q4	-8	-46	-27	21	18	9	-22	-55	1997Q4	-3	-54	12	6	-20	-2	-18	-79	
1997	-31	-111	-97	-97	-41	-57	-43	-477	1997	-49	-67	-45	-48	-69	-23	-22	-323	
1998Q1	-64	-133	-199	-121	-116	-43	-25	-701	1998Q1	-73	-57	-102	-55	-46	-21	-8	-362	
1998Q2	-95	-34	43	5	-13	-4	27	-71	1998Q2	-72	-10	-57	-19	-20	-3	21	-160	
1998Q3	-14	-68	-156	-73	-37	-25	-8	-381	1998Q3	-2	-7	-32	-13	-3	-26	-6	-89	
1998Q4	-43	-6	-7	-8	-25	-16	3	-102	1998Q4	-32	-13	8	-24	-36	-11	-3	-111	
1998	-216	-241	-319	-197	-191	-88	-3	-1,255	1998	-179	-87	-183	-111	-105	-61	4	-722	
1999Q1	-46	-48	-60	-81	-49	-31	-10	-325	1999Q1	-37	-35	-41	-48	-26	-16	-2	-205	
1999Q2	5	-6	-20	6	11	4	-7	-7	1999Q2	29	-22	-8	-6	5	10	-1	7	
1999Q3	-11	-62	-99	-44	-30	-13	-14	-273	1999Q3	-9	11	5	-5	-18	-8	-9	-33	
1999Q4	-37	14	27	1	12	2	8	27	1999Q4	-56	-9	1	-21	4	-11	8	-84	
1999	-89	-102	-152	-118	-56	-38	-23	-578	1999	-73	-55	-43	-80	-35	-25	-4	-315	
2000Q1	-26	12	17	-5	-6	4	-1	-5	2000Q1	-26	-2	-19	-19	-4	0	-1	-71	
2000Q2	-31	-18	-11	-25	-32	-16	1	-132	2000Q2	-5	-19	-48	-29	-15	-2	7	-111	
2000Q3	17	-73	-51	-61	-26	-11	5	-200	2000Q3	13	-10	-8	-10	1	-2	2	-14	
2000Q4	-13	-27	-39	10	-42	-2	-8	-121	2000Q4	4	-18	-1	-25	-9	-9	-4	-62	
2000	-53	-106	-84	-81	-106	-25	-3	-458	2000	-14	-49	-76	-83	-27	-13	4	-258	
2001Q1	-42	-48	-14	-35	-25	-12	-2	-178	2001Q1	0	-20	-31	-19	-14	-3	-3	-90	
2001Q2	-66	-24	64	55	54	3	-13	73	2001Q2	-63	-32	-35	-4	-15	-4	3	-150	
2001Q3	-15	-23	-24	-23	-8	2	3	-88	2001Q3	-3	-1	-14	-5	-7	-3	1	-32	
2001Q4	-20	21	-3	18	4	21	-12	29	2001Q4	-3	16	36	-15	-1	-5	-2	26	
2001	-143	-74	23	15	25	14	-24	-164	2001	-69	-37	-44	-43	-37	-15	-1	-246	
2002Q1	-10	-74	-45	-46	-34	-16	-12	-237	2002Q1	-20	-39	-32	-16	-9	-7	-8	-131	
2002Q2	14	-28	-2	20	7	2	-3	10	2002Q2	16	14	9	3	4	-2	1	45	
2002Q3	25	-34	-25	-5	-24	-14	-2	-79	2002Q3	20	13	-10	41	-2	-17	-2	43	
2002Q4	-23	-25	3	-11	-6	-34	-2	-98	2002Q4	-34	-28	-5	-33	-13	-12	-2	-127	
2002	6	-161	-69	-42	-57	-62	-19	-404	2002	-18	-40	-38	-5	-20	-38	-11	-170	
2003Q1	10	-31	-11	-35	-32	3	4	-92	2003Q1	16	-20	19	-7	-16	-8	-6	-22	
2003Q2	-15	-2	4	25	8	-22	2	0	2003Q2	-16	4	2	-8	-18	-4	0	-40	
2003Q3	43	-11	43	20	15	4	-9	105	2003Q3	30	-8	19	3	17	13	4	78	
2003Q4	7	27	23	38	38	12	6	151	2003Q4	5	24	36	14	15	0	4	98	
2003	45	-17	59	48	29	-3	3	164	2003	35	0	76	2	-2	1	2	114	

	Total								Total	Total								Total
	0 - 14	15 - 24	25 - 34	35 - 44	45 - 54	55 - 64	65+	0 - 14		15 - 24	25 - 34	35 - 44	45 - 54	55 - 64	65+			
1995Q1	2	60	31	25	12	-5	6	131	2000Q1	-52	10	-2	-24	-10	4	-2	-76	
1995Q2	-7	21	6	12	14	-9	2	39	2000Q2	-36	-37	-59	-54	-47	-18	8	-243	
1995Q3	177	130	182	109	68	30	6	702	2000Q3	30	-83	-59	-71	-25	-13	7	-214	
1995Q4	48	-45	17	-22	-10	-7	-5	-24	2000Q4	-9	-45	-40	-15	-51	-11	-12	-183	
1995	220	166	236	124	84	9	9	848	2000	-67	-155	-160	-164	-133	-38	1	-716	
1996Q1	15	9	-3	12	15	-9	-12	27	2001Q1	-42	-68	-45	-54	-39	-15	-5	-268	
1996Q2	46	131	117	93	60	-6	12	453	2001Q2	-129	-56	29	51	39	-1	-10	-77	
1996Q3	123	104	154	97	65	13	-1	555	2001Q3	-18	-24	-38	-28	-15	-1	4	-120	
1996Q4	19	46	50	17	-35	-6	1	92	2001Q4	-23	37	33	3	3	16	-14	55	
1996	203	290	318	219	105	-8	0	1,127	2001	-212	-111	-21	-28	-12	-1	-25	-410	
1997Q1	-67	-44	-81	-62	-21	-30	-19	-324	2002Q1	-30	-113	-77	-62	-43	-23	-20	-368	
1997Q2	-19	-9	11	-57	-31	-31	1	-135	2002Q2	30	-14	7	23	11	0	-2	55	
1997Q3	17	-25	-57	-53	-56	-26	-7	-207	2002Q3	45	-21	-35	36	-26	-31	-4	-36	
1997Q4	-11	-100	-15	27	-2	7	-40	-134	2002Q4	-57	-53	-2	-44	-19	-46	-4	-225	
1997	-80	-178	-142	-145	-110	-80	-65	-800	2002	-12	-201	-107	-47	-77	-100	-30	-574	
1998Q1	-137	-190	-301	-176	-162	-64	-33	-1,063	2003Q1	26	-51	8	-42	-48	-5	-2	-114	
1998Q2	-167	-44	-14	-14	-33	-7	48	-231	2003Q2	-31	2	6	17	-10	-26	2	-40	
1998Q3	-16	-75	-188	-86	-40	-51	-14	-470	2003Q3	73	-19	62	23	32	17	-5	183	
1998Q4	-75	-19	1	-32	-61	-27	0	-213	2003Q4	12	51	59	52	53	12	10	249	
1998	-395	-328	-502	-308	-296	-149	1	-1,977	2003	80	-17	135	50	27	-2	5	278	
1999Q1	-83	-83	-101	-129	-75	-47	-12	-530										
1999Q2	34	-28	-28	0	16	14	-8	0										
1999Q3	-20	-51	-94	-49	-48	-21	-23	-306										
1999Q4	-93	5	28	-20	16	-9	16	-57										
1999	-162	-157	-195	-198	-91	-63	-27	-893										

Median Length of Residency —Tables

	1994	1995	1996	1997	1998	1999	2000	2001	2002	2003
	----- Number of Years -----									
Out-migrants	3	3	3	3	2	2	2	3	2	3
Non-migrants	5	5	6	6	7	7	7	8	8	7
Out-migrant Males	2	3	3	3	2	1	2	2	2	2
Out-migrant Females	3	3	3	3	3	2	2	3	3	3
Non-migrant Males	5	5	6	6	7	7	6	7	7	7
Non-migrant Females	5	6	6	6	7	7	7	8	8	8
Out-migrant less than 15	3	3	3	3	3	3	2	3	3	3
Out-migrant 15-24	2	2	2	2	1	1	1	1	1	2
Out-migrant 25-34	3	3	2	3	2	1	2	2	2	2
Out-migrant 35-44	3	4	3	4	3	2	3	3	3	3
Out-migrant 45-54	3	4	4	3	2	2	3	4	3	4
Out-migrant 55-64	4	4	5	5	3	2	7	6	6	6
Out-migrant 65 or more	6	10	9	10	8	8	10	10	10	10
Non-migrant less than 15	4	5	5	5	5	5	5	6	6	6
Non-migrant 15-24	3	3	3	3	4	4	3	4	4	3
Non-migrant 25-34	4	5	5	5	5	5	4	5	5	4
Non-migrant 35-44	7	7	7	7	8	8	7	9	8	8
Non-migrant 45-54	9	9	9	9	10	10	10	10	10	10
Non-migrant 55-64	10	10	10	10	10	10	10	10	10	10
Non-migrant 65 or more	10	10	10	10	10	10	10	10	10	10
Out-migrant Status Aboriginals	4	4	4	6	3	1	3	3	2	3
Out-migrant Non-aboriginals	3	3	3	3	2	2	2	3	2	3
Non-migrant Status Aboriginals	6	6	6	7	8	8	7	8	8	7
Non-migrant Non-aboriginals	5	5	6	6	7	7	7	8	8	7

Notes: '10' refers to median length of residency as ten or more years. Data after ten years is limited by the Yukon Health Care Registration file.

This data was generated by comparing January 1st populations in successive years. Anyone who is in both datasets is considered a non-migrant. Anyone who moved out and moved back in within a single calendar year is counted as a non-migrant. Those who were in the population dataset on January 1st of a given year and not in the dataset on the following January 1st are counted as out-migrants.

'Median length of residency' refers to the value at which one-half of the residency lengths are higher and one-half are lower. This middle point is a better indicator of length of residency than an 'average' length would be.

Length of Continuous Residency—Tables

		1998						2003							
		----- Number of Years -----						----- Number of Years -----							
		Less than 1	1 - 3	4 - 6	7 - 9	10 or more	Total	Less than 1	1 - 3	4 - 6	7 - 9	10 or more	Total		
Status Aboriginal	0-15	181	434	290	261	182	1,348	Status Aboriginal	0-15	169	352	187	174	240	1,122
Non-aboriginal	0-15	761	1,783	1,291	917	947	5,699	Non-aboriginal	0-15	706	1,337	973	772	1,023	4,811
Total	0-15	942	2,217	1,581	1,178	1,129	7,047	Total	0-15	875	1,689	1,160	946	1,263	5,933
Status Aboriginal	15-24	157	274	163	72	152	818	Status Aboriginal	15-24	190	323	126	46	174	859
Non-aboriginal	15-24	874	1,143	543	201	682	3,443	Non-aboriginal	15-24	859	1,067	402	150	873	3,351
Total	15-24	1,031	1,417	706	273	834	4,261	Total	15-24	1,049	1,390	528	196	1,047	4,210
Status Aboriginal	25-34	101	165	143	250	260	919	Status Aboriginal	25-34	135	211	86	98	170	700
Non-aboriginal	25-34	764	1,477	796	607	383	4,027	Non-aboriginal	25-34	725	1,114	546	414	398	3,197
Total	25-34	865	1,642	939	857	643	4,946	Total	25-34	860	1,325	632	512	568	3,897
Status Aboriginal	35-44	98	159	112	158	402	929	Status Aboriginal	35-44	147	232	115	79	433	1,006
Non-aboriginal	35-44	648	1,319	988	839	1,867	5,661	Non-aboriginal	35-44	535	945	654	598	1,633	4,365
Total	35-44	746	1,478	1,100	997	2,269	6,590	Total	35-44	682	1,177	769	677	2,066	5,371
Status Aboriginal	45-54	27	48	62	67	219	423	Status Aboriginal	45-54	58	158	66	51	348	681
Non-aboriginal	45-54	363	756	664	566	2,111	4,460	Non-aboriginal	45-54	445	768	556	496	2,697	4,962
Total	45-54	390	804	726	633	2,330	4,883	Total	45-54	503	926	622	547	3,045	5,643
Status Aboriginal	55-64	19	62	55	65	244	445	Status Aboriginal	55-64	35	51	42	28	232	388
Non-aboriginal	55-64	133	283	267	234	1,052	1,969	Non-aboriginal	55-64	186	386	251	240	1,723	2,786
Total	55-64	152	345	322	299	1,296	2,414	Total	55-64	221	437	293	268	1,955	3,174
Status Aboriginal	65+	13	18	23	45	200	299	Status Aboriginal	65+	23	35	21	22	267	368
Non-aboriginal	65+	75	108	168	111	866	1,328	Non-aboriginal	65+	77	157	138	111	1,176	1,659
Total	65+	88	126	191	156	1,066	1,627	Total	65+	100	192	159	133	1,443	2,027
Status Aboriginal	Male	317	562	412	433	737	2,461	Status Aboriginal	Male	442	688	293	219	735	2,377
Non-aboriginal	Male	2,055	3,634	2,336	1,715	4,011	13,751	Non-aboriginal	Male	2,013	3,034	1,749	1,342	4,561	12,699
Total	Male	2,372	4,196	2,748	2,148	4,748	16,212	Total	Male	2,455	3,722	2,042	1,561	5,296	15,076
Status Aboriginal	Female	279	598	436	485	922	2,720	Status Aboriginal	Female	315	674	350	279	1,129	2,747
Non-aboriginal	Female	1,563	3,235	2,381	1,760	3,897	12,836	Non-aboriginal	Female	1,520	2,740	1,771	1,439	4,962	12,432
Total	Female	1,842	3,833	2,817	2,245	4,819	15,556	Total	Female	1,835	3,414	2,121	1,718	6,091	15,179
Status Aboriginal	Total	596	1,160	848	918	1,659	5,181	Status Aboriginal	Total	757	1,362	643	498	1,864	5,124
Non-aboriginal	Total	3,618	6,869	4,717	3,475	7,908	26,587	Non-aboriginal	Total	3,533	5,774	3,520	2,781	9,523	25,131
Total	Total	4,214	8,029	5,565	4,393	9,567	31,768	Total	Total	4,290	7,136	4,163	3,279	11,387	30,255