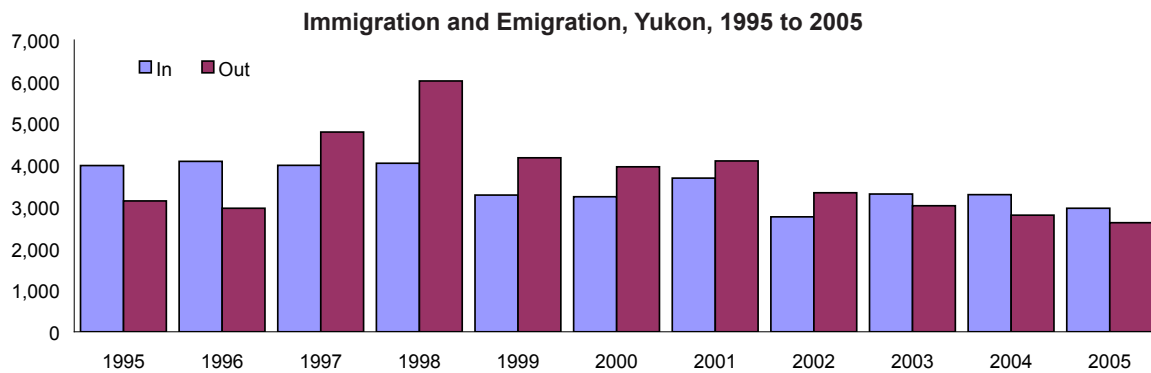


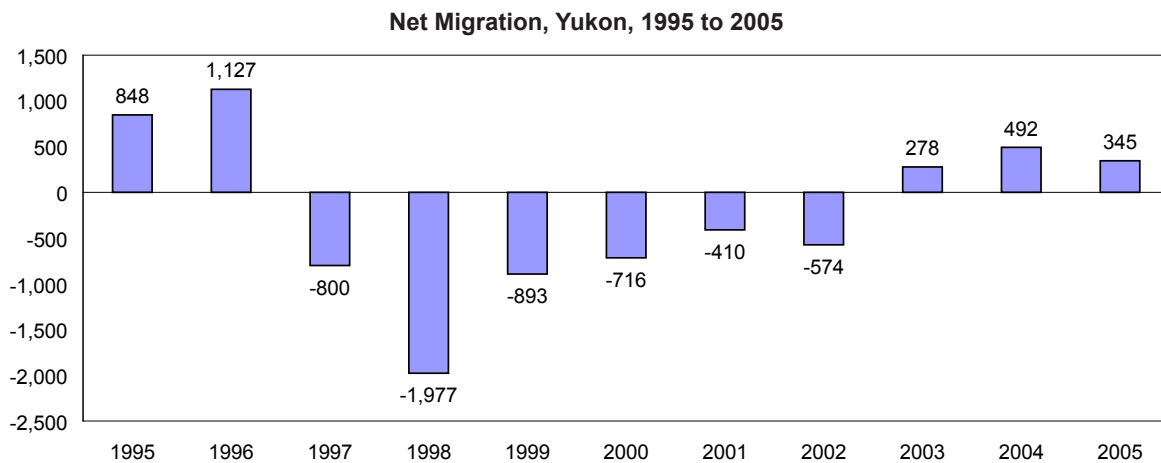
## Yukon Migration Patterns 1995–2005

### Highlights

This report examines migration patterns in the Yukon and is divided into three sections. The first section looks at immigration and emigration for the Yukon from 1995 to 2005. It examines both quarterly and yearly migration patterns by gender and age. The second section looks at the median length of residency in the Yukon for out-migrants (those who have moved out of the Yukon during the year and not returned) and non-migrants (those who remained resident in the Yukon during the year) by gender, age and ethnicity. The third section compares continuous length of residency in the Yukon in 2005 with 2000, also by gender, age and ethnicity. All of the migration numbers used in this report are based statistically on the Yukon Bureau of Statistics' population data (which are based on the Yukon Health Care registration file).

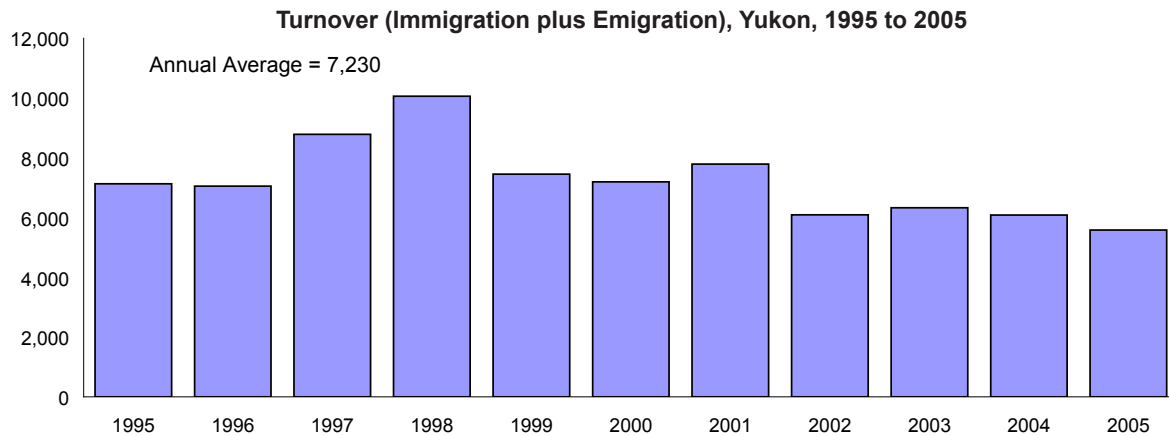


In total, from 1995 to 2004, more people have moved out of the Territory than have moved into the Territory, with losses exceeding gains for six consecutive years (1997 to 2002). Subsequently, immigration exceeded emigration in 2003 and 2004. This trend continued in 2005; 2,617 people emigrated from the Yukon, while 2,962 people immigrated to the Yukon.

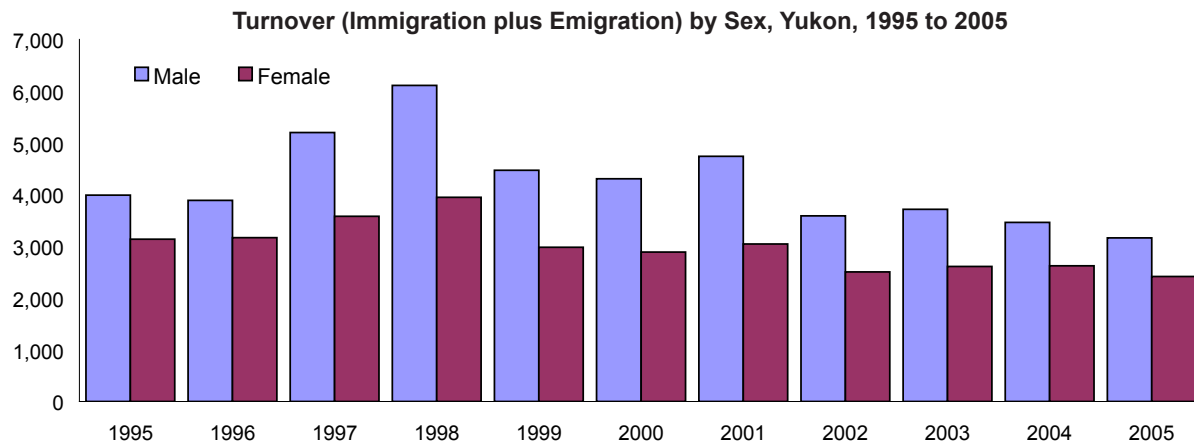


Net migration is the difference between the number of people entering the Yukon (immigration) and the number of people leaving the Yukon (emigration). From 1995 to 2005, average annual net migration for the Yukon was -207. Since 1995, the Yukon has experienced two periods of population growth and one period of population decline. The largest increase in the Yukon population occurred in 1996 when net migration equalled 1,127, and the largest decrease was in 1998 when net migration was -1,977.

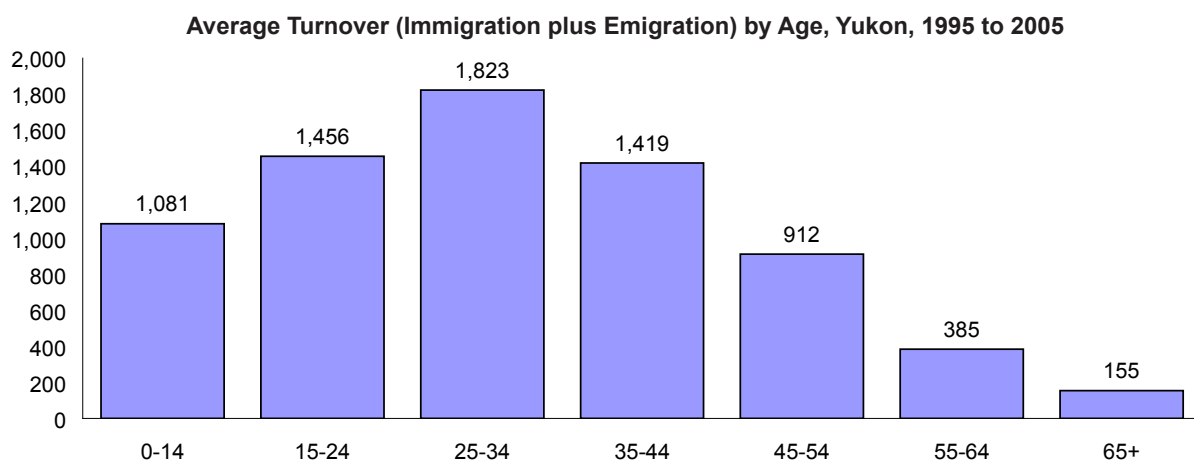
# Yearly Turnover



From 1995 to 2005, the average annual turnover (immigration plus emigration) for the Yukon was 7,230. Turnover shows the segment of the population that is mobile and affects things such as the housing market, rental prices and vacancy rates.



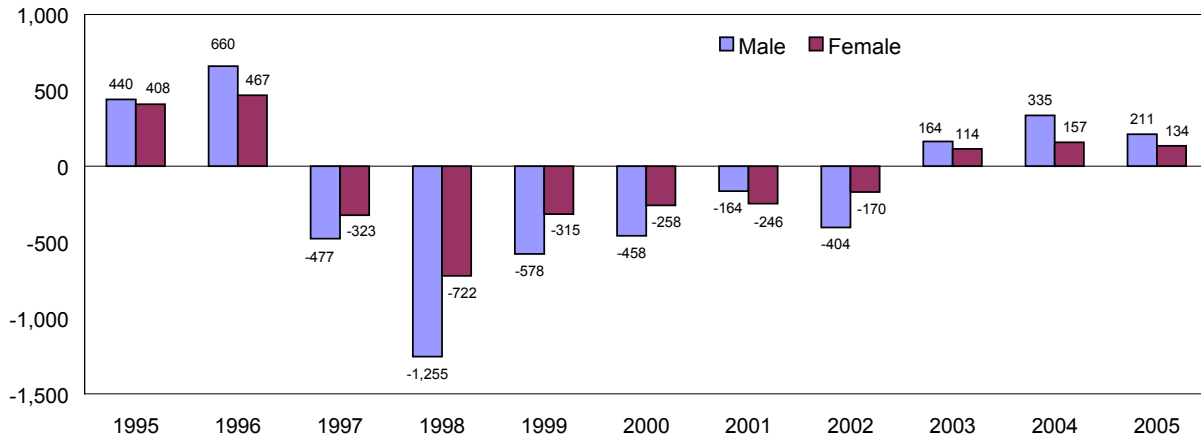
Since 1995, more men than women moved into or out of the Territory, indicating that in the Yukon men are more mobile than women. From 1995 to 2005, the average annual turnover was 4,239 for men and 2,991 for women.



People in younger age groups are also more mobile. Average annual turnover from 1995 to 2005 shows that fewer people in age groups 45–54, 55–64 and 65+ were moving into or out of the Territory. The age group with the highest average annual turnover was the 25–34 year-old age group (1,823).

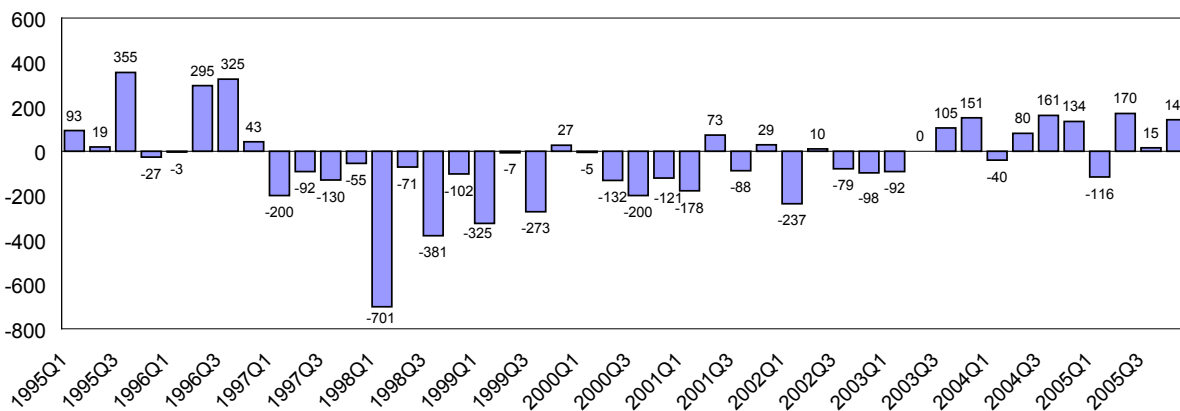
# Migration by Sex

**Net Migration by Sex, Yukon, 1995 to 2005**



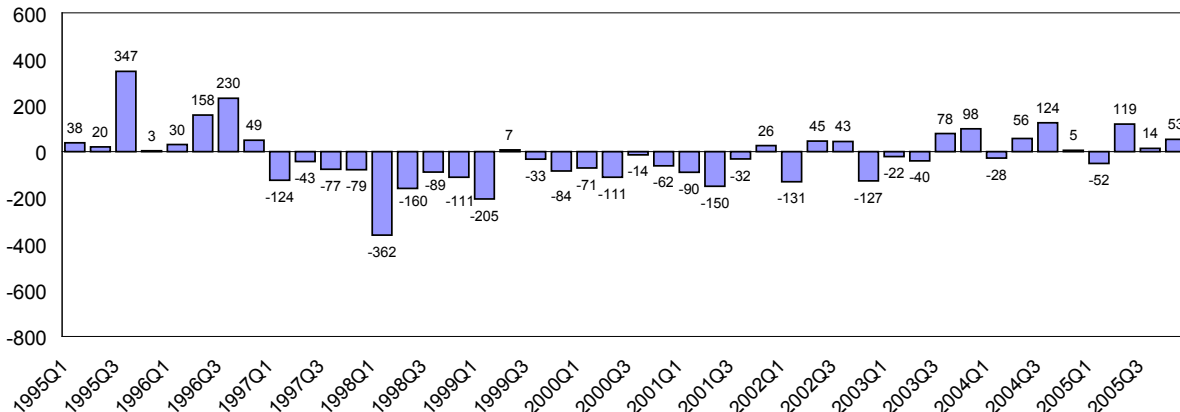
The pattern of net migration is similar for males and females, although males are more mobile, exceeding females in migration in each year except 2001. From 1995 to 2005, average annual net migration was -139 for males and -69 for females. In 2005, net migration for both males and females was positive, following a trend that started in 2003.

**Net Migration, Males, Yukon, 1995 to 2005**



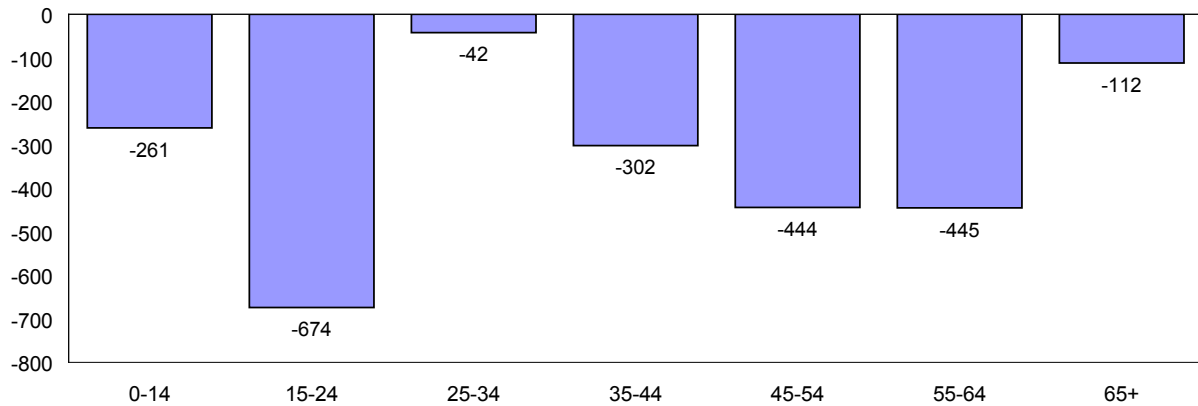
Net migration patterns by quarter are also similar for males and females, although in some quarters net migration for females exceeded net migration for males. From 1995 to 2005, average quarterly net migration was -35 for males and -17 for females.

**Net Migration, Females, Yukon, 1995 to 2005**



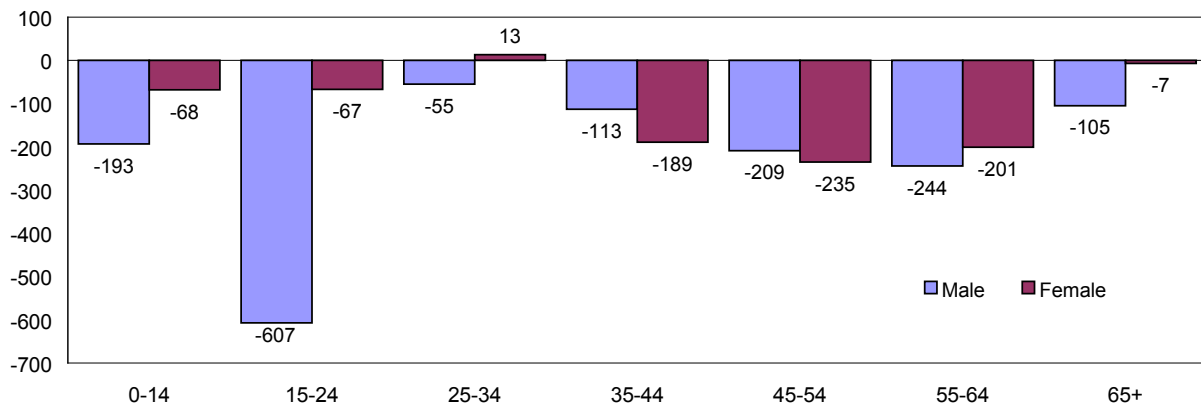
# Migration by Age

**Total Net Migration by Age, Yukon, 1995 to 2005**



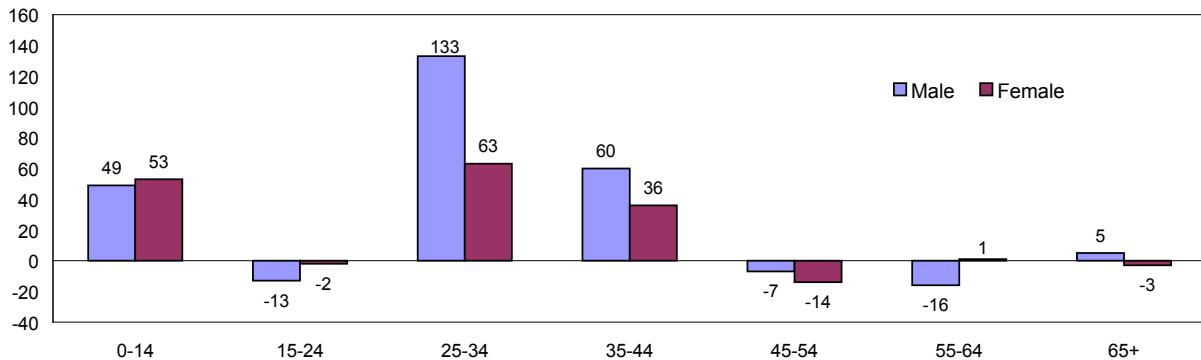
Net migration by age group shows that all age groups decreased between 1995 and 2005. From 1995 to 2005, the age group with the largest decrease in population was the 15–24-year-old age group (-674).

**Total Net Migration by Age and Sex, Yukon, 1995 to 2005**



The pattern of net migration by age is similar for males and females, with the exception of the 15–24 group and, to a lesser extent, the 0–14 and the 65+ age groups. With the exception of the 25–34 females, all male and female age groups decreased between 1995 and 2005.

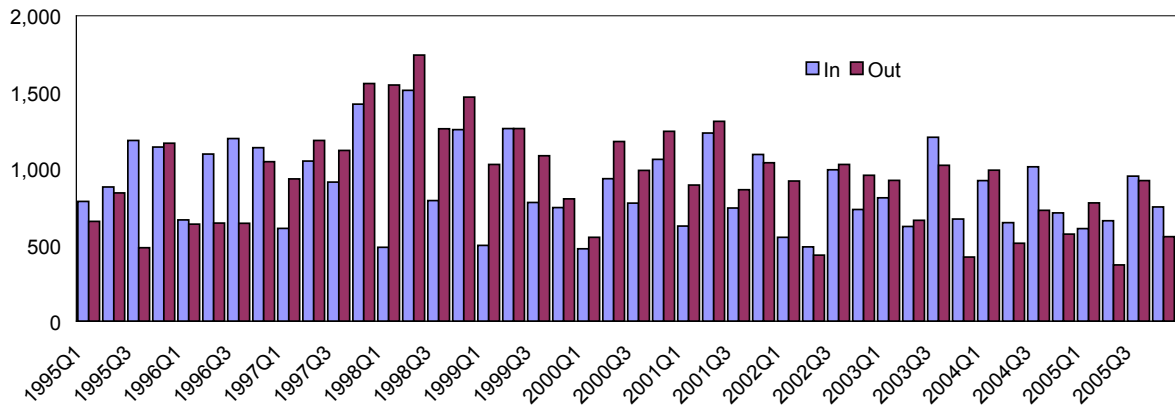
**Total Net Migration by Age and Sex, Yukon, 2005**



In 2005, net migration by age was positive for both sexes in the 0–14, 25–34, and 35–44 age groups. The age group with the largest positive net migration (+133) was the 25–34-year-old male category. There were minor negative net migrations in the 15–24 and 45+ age groups.

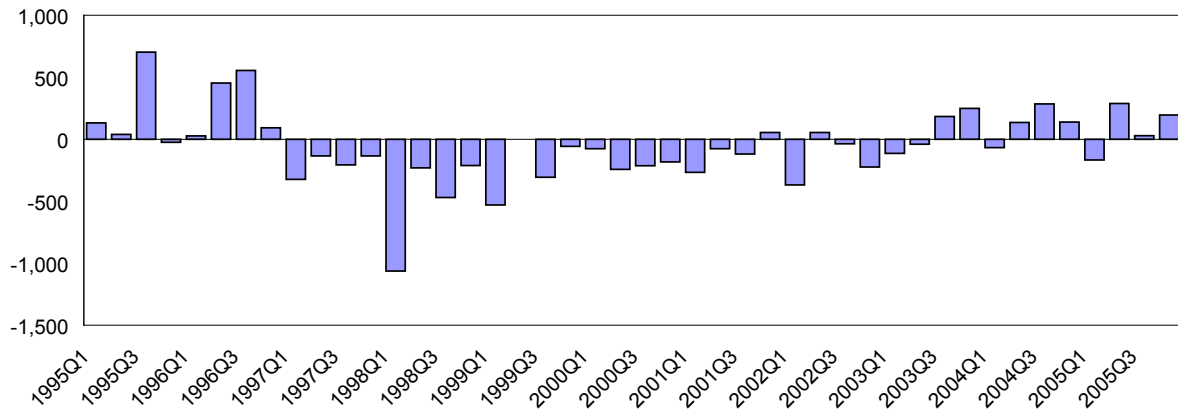
# Migration by Quarter

**Immigration and Emigration by Quarter, Yukon, 1995 to 2005**



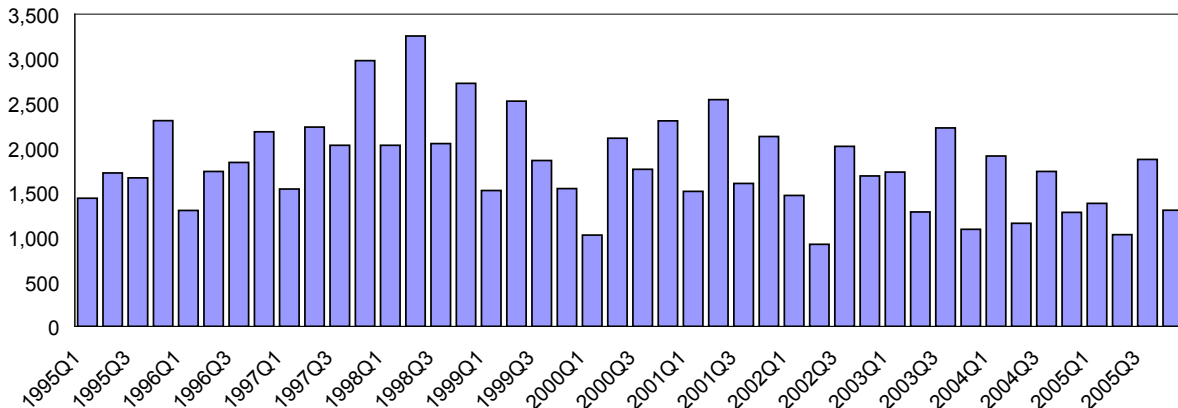
From 1995 to 2005, average quarterly immigration for the Yukon was 878 and average quarterly emigration was 930. In the first quarter of 2005, more people moved out of the Territory than into it. In the final three quarters of 2005, this trend was reversed and more people moved into the Territory than moved out.

**Net Migration by Quarter, Yukon, 1995 to 2005**



Since 1995, net migration has been positive in 17 quarters and negative or zero in 27 quarters. From 1995 to 2005, average quarterly net migration for the Yukon was -52. Net migration reached a high of 702 in the third quarter of 1995, and a low of -1,063 in the first quarter of 1998.

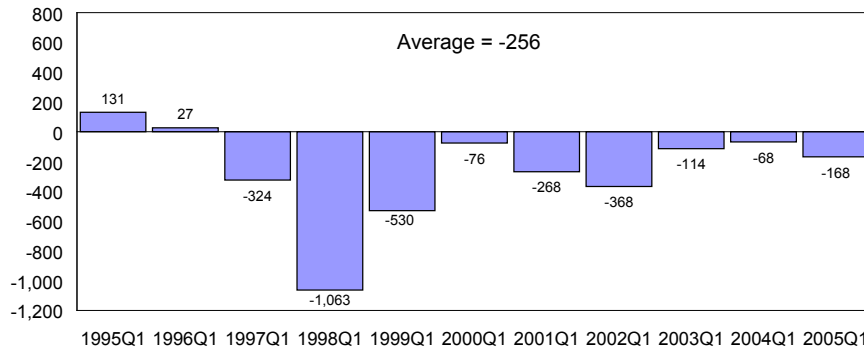
**Turnover by Quarter, Yukon, 1995 to 2005**



From 1995 to 2005, the average turnover in each quarter was 1,808. Turnover reached a high of 3,255 in the second quarter of 1998 and a low of 919 in the second quarter of 2002.

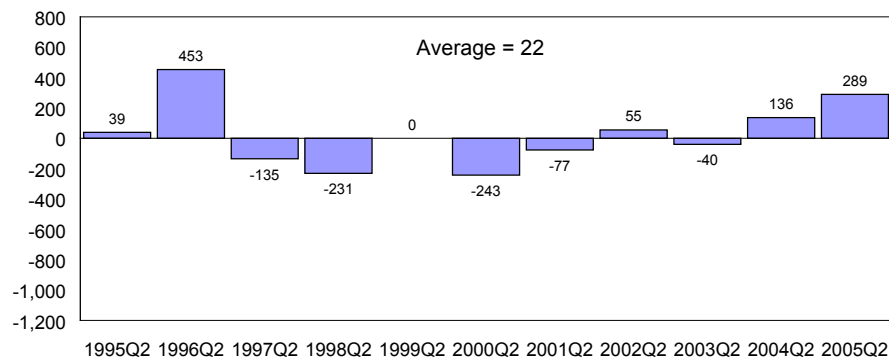
# Migration by Quarter

**Net Migration by Quarter, Yukon, 1995 to 2005**

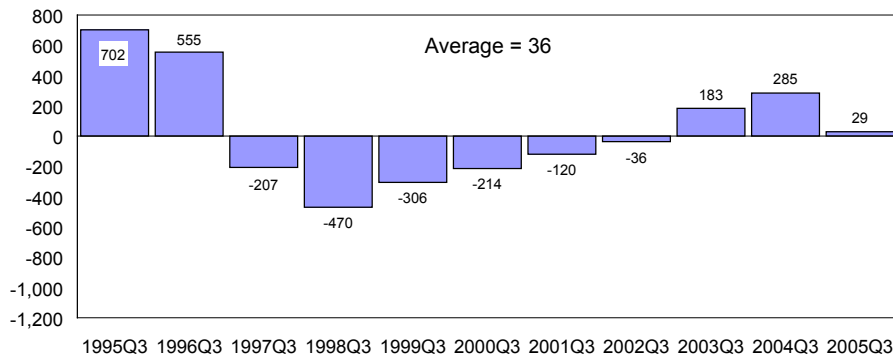


Data from 1995 to 2005 show that average immigration to the Yukon during the first quarter was 638 and average emigration from the Yukon was 894, resulting in an average net migration of -256. This first-quarter average net migration was lower than any other quarter.

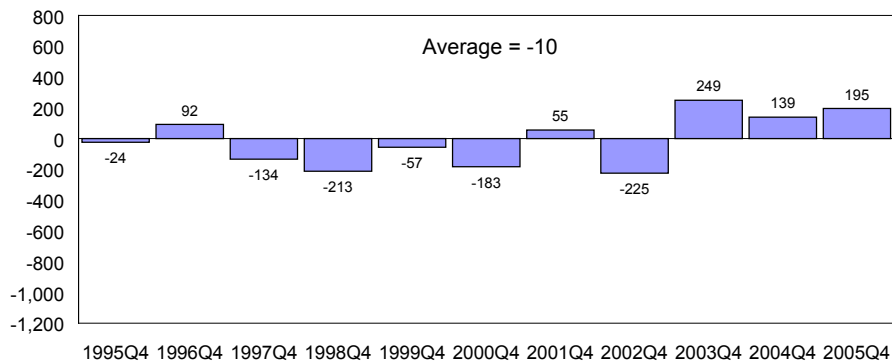
Data from 1995 to 2005 show that average immigration to the Yukon during the second quarter was 943 and average emigration from the Yukon was 921, resulting in an average net migration of 22.



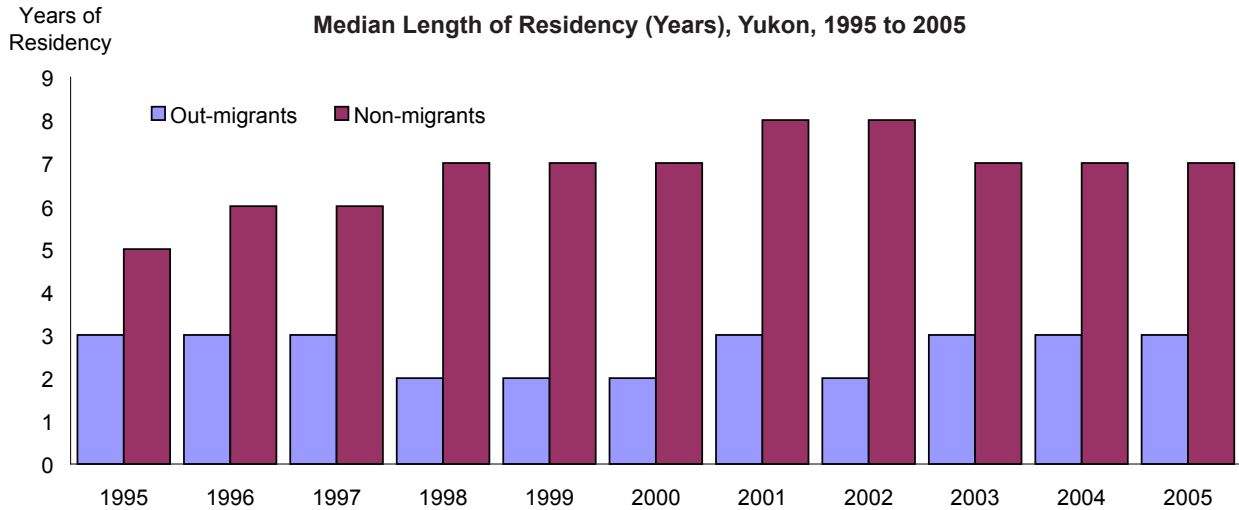
Data from 1995 to 2005 show that average immigration to the Yukon during the third quarter was 957 and average emigration from the Yukon was 921, resulting in an average net migration of 36. This third-quarter average net migration was higher than any other quarter.



Data from 1995 to 2005 show that average immigration to the Yukon during the fourth quarter was 973 and average emigration from the Yukon was 983, resulting in an average net migration of -10.



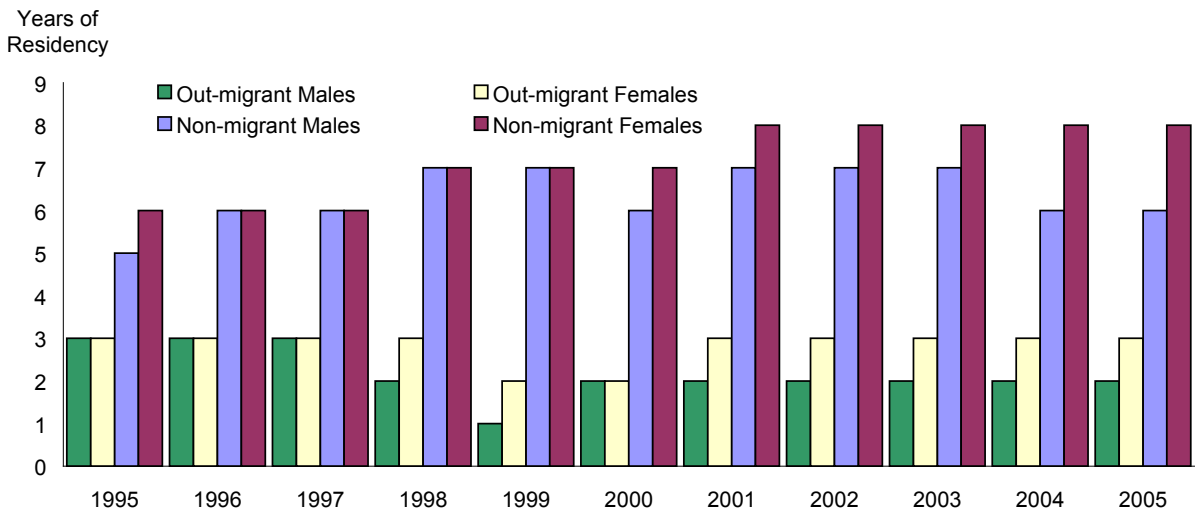
## Median Length of Residency



In 2005, the median length of residency for out-migrants (those who moved out of the Yukon during the year) was three years. This figure has been consistent since 2003.

In 2005, the median length of residency for non-migrants (those who remained resident in the Yukon during the year) was seven years. The median length of residency for non-migrants increased steadily from 1995 to 2002. It fell by one year in 2003 from 2002, and subsequently remained steady at seven years to 2005.

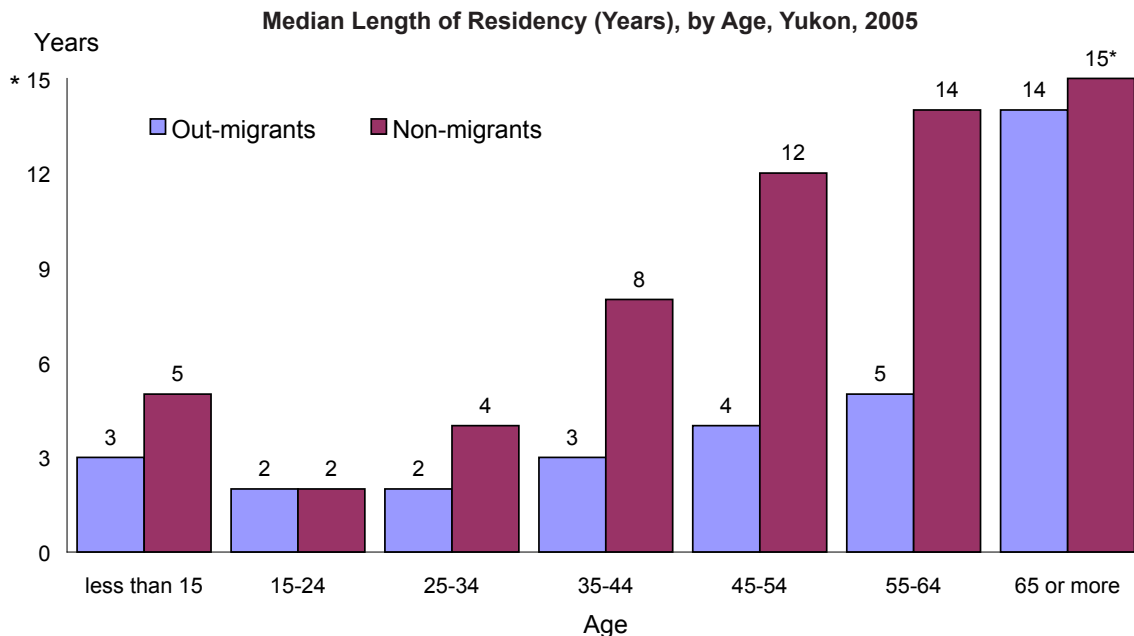
### Median Length of Residency (Years), by Sex, Yukon, 1995 to 2005



From 1995 to 2005, the median length of residency for out-migrant males and out-migrant females showed that males were slightly more mobile than females. In 2005, the median length of residency for out-migrant males was two years, and three years for females.

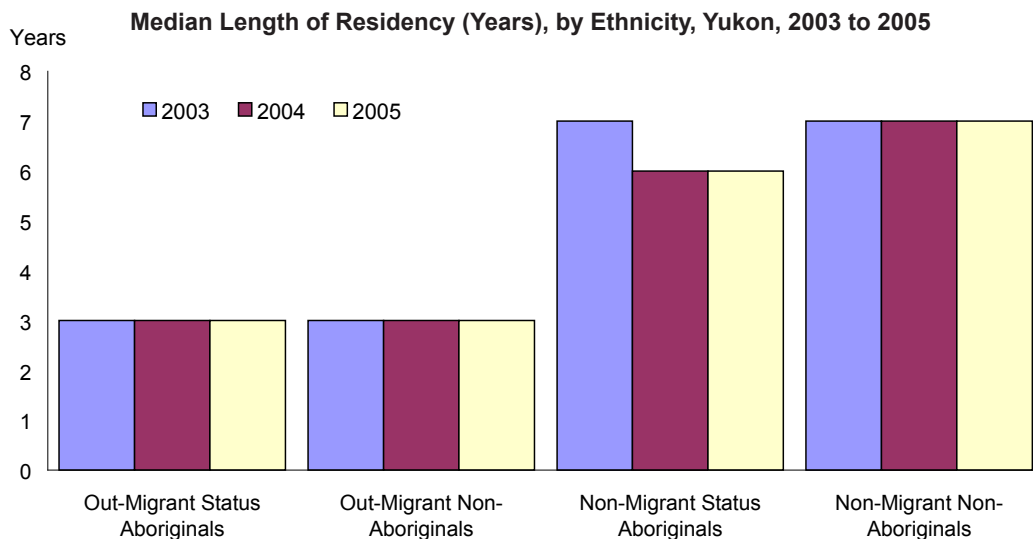
Non-migrant males and non-migrant females also have similar migration patterns. In 2005, the median length of residency for non-migrant males was six years, and eight years for females.

## Median Length of Residency



\* Refers to median length of residency as 15 or more years. Data after fifteen years is limited by the Yukon Health Care Registration file.

The median length of residency for out-migrants and non-migrants increases with age (with the exception of the 15–24-year-old age group). People in younger age groups are more mobile than people in older age groups. In each age group, out-migrants are more mobile than non-migrants. From 1995 to 2005, the median length of residency for non-migrants over 65 years of age has been 15 or more years.



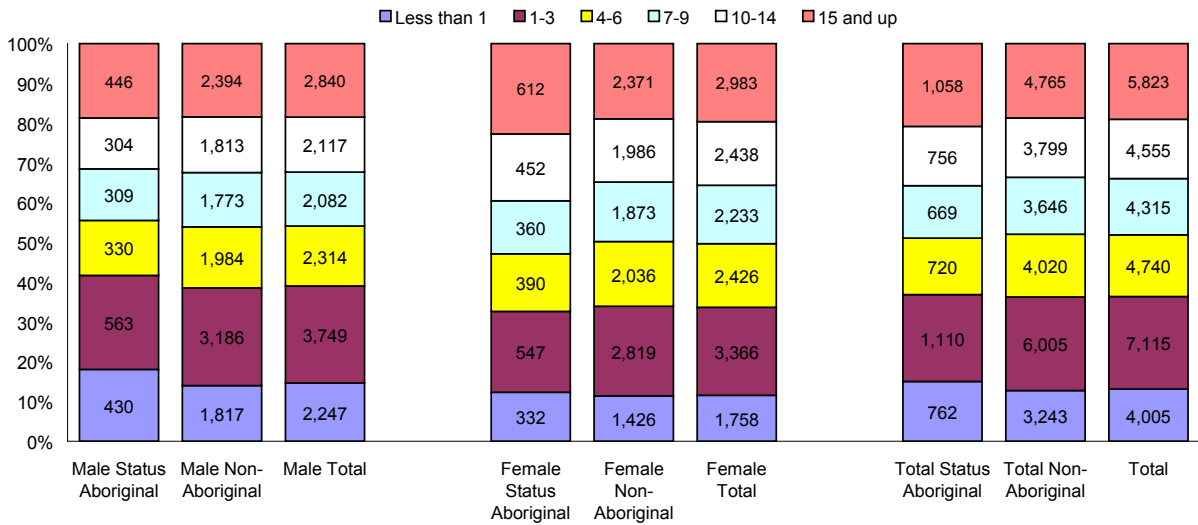
From 2003 to 2005, the median length of residency for Aboriginal out-migrants and non-Aboriginal out-migrants showed that Aboriginals were equally mobile as non-Aboriginal out-migrants. In 2005, the median length of residency for both Aboriginal and non-Aboriginal out-migrants was three years.

The migration patterns for non-migrant Aboriginals and non-Aboriginal non-migrants are similar to the patterns of the out-migrant population. In 2005, the median length of residency for Aboriginal non-migrants was six years, and for non-Aboriginal non-migrants it was seven years.



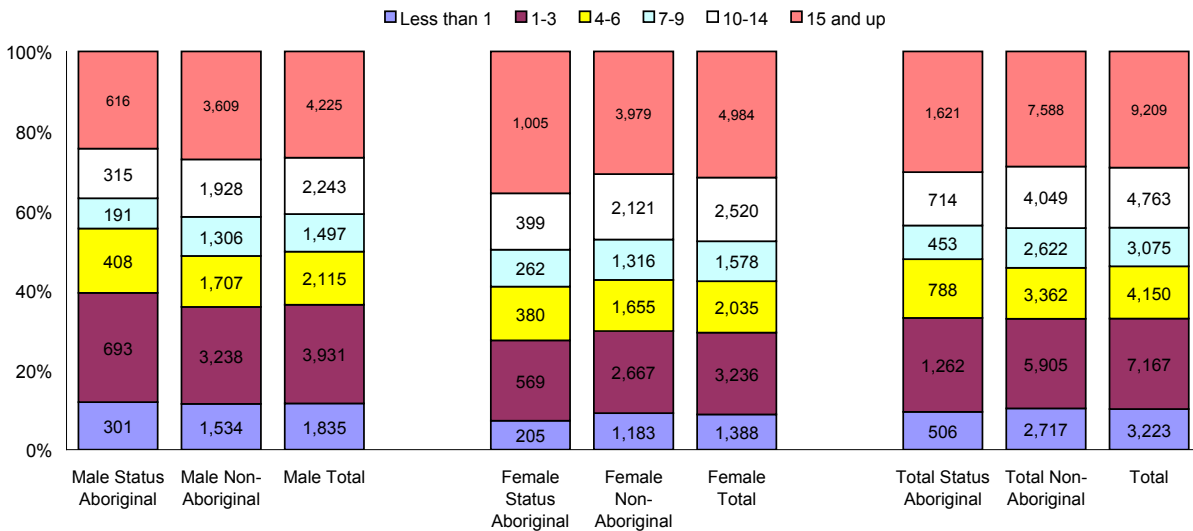
# Length of Continuous Residency

Length of Continuous Residency (Years), by Ethnicity and Sex, Yukon, 2000



The 15 years or more group increased by 3,386 people, or 58.1%, when comparing 2000 to 2005. The largest decrease was in the 7-to-9-year residency group, which decreased by 1,240 people, or 28.7%. Comparing 2000 to 2005, there was a 19.5% decrease in the number of people whose continuous length of residency was less than one year, indicating that fewer people are immigrating to the Yukon.

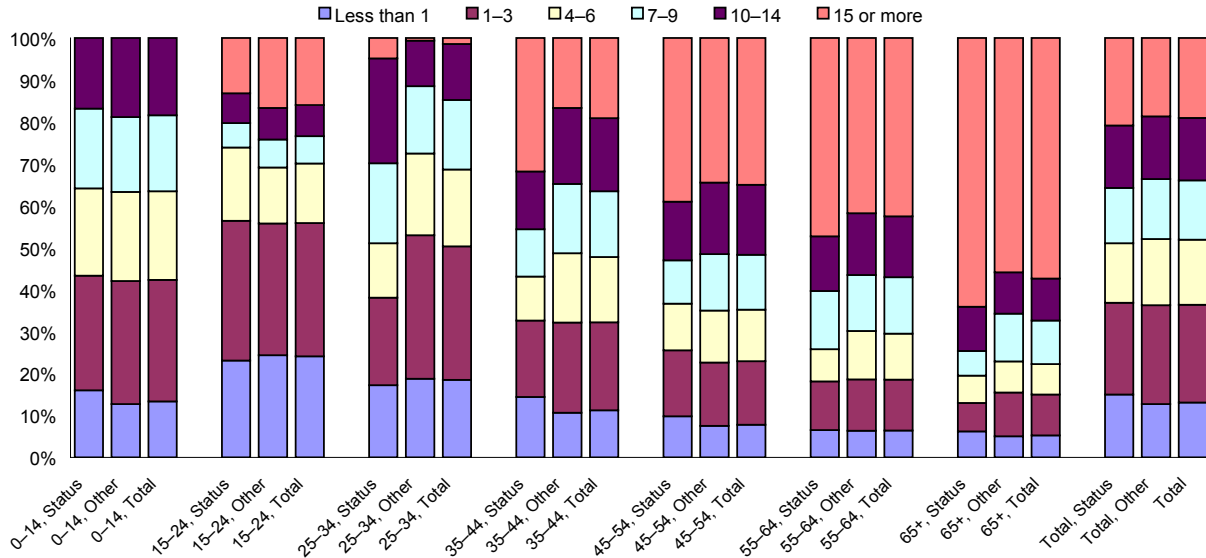
Length of Continuous Residency (Years), by Ethnicity and Sex, Yukon, 2005



There is no significant difference between the percentage of status Aboriginals (30.3%) in residency group '15 or more years' when compared with non-Aboriginal residents (28.9%). There is a larger percentage of females (31.7%) in residency group '15 or more years' when compared with male residents (26.7%). This indicates that females are slightly less mobile than males.

# Length of Continuous Residency

Length of Continuous Residency (Years), by Ethnicity and Age, Yukon, 2000

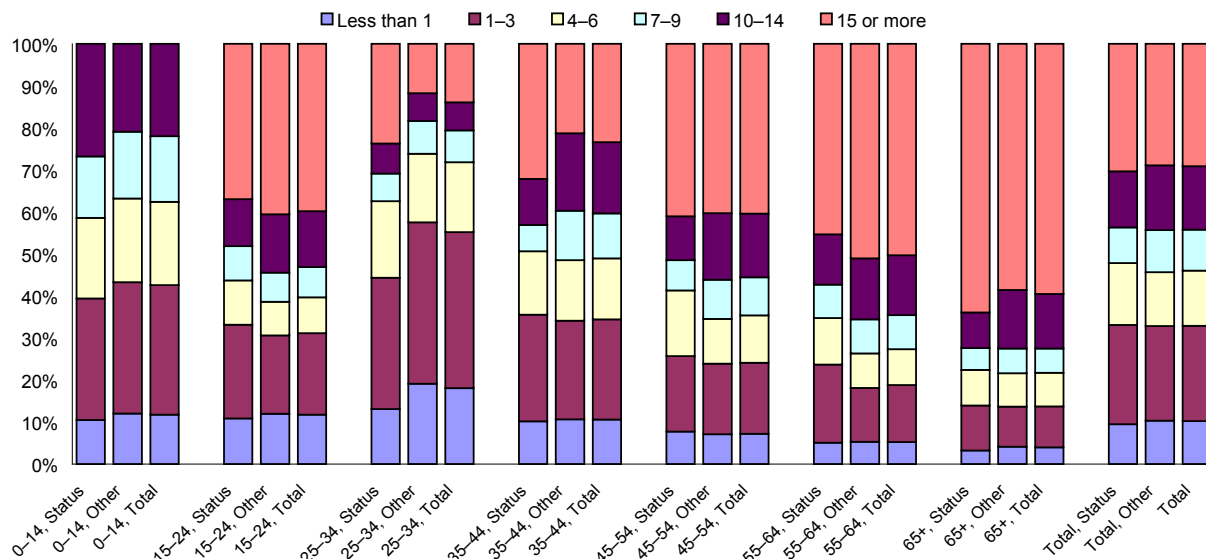


The length of continuous residency for status Aboriginals and non-Aboriginals generally increases with age. People in younger age groups are more mobile than people in older age groups. In 2005, 59.5% of residents 65 and older were continuous residents in the Yukon for 15 years or more. For the 25-to-34-year-old age group, only 13.9% had lived in the Yukon for 15 or more years.

The most mobile age group in 2005 in the Yukon is the 25-to-34-year-old age group. This group has the lowest percentage of people who have lived in the Yukon continuously for 15 or more years. The 25-to-34-year-old age group also has a high percentage of people who have lived in the Yukon for less than one year. Status Aboriginals are less mobile than non-Aboriginals in the 25-to-34- and, to a lesser degree, the same holds for the 35-to-44-year-old age groups.

Comparing 2000 to 2005, the percentage of people who have lived in the Yukon continuously for 15 or more years increased in each age group.

Length of Continuous Residency (Years), by Ethnicity and Age, Yukon, 2005



# Immigration—Tables

	Male							Total
	0-14	15-24	25-34	35-44	45-54	55-64	65+	
1996Q1	49	63	104	74	51	12	3	356
1996Q2	71	146	170	146	79	24	10	646
1996Q3	149	98	162	122	76	29	4	640
1996Q4	109	114	179	125	67	28	10	632
<b>1996</b>	<b>378</b>	<b>421</b>	<b>615</b>	<b>467</b>	<b>273</b>	<b>93</b>	<b>27</b>	<b>2,274</b>
1997Q1	43	70	99	70	46	9	2	339
1997Q2	94	97	175	126	87	23	12	614
1997Q3	123	87	121	104	55	17	8	515
1997Q4	93	149	234	219	126	58	15	894
<b>1997</b>	<b>353</b>	<b>403</b>	<b>629</b>	<b>519</b>	<b>314</b>	<b>107</b>	<b>37</b>	<b>2,362</b>
1998Q1	50	44	68	70	27	6	5	270
1998Q2	62	194	293	217	114	57	30	967
1998Q3	76	72	85	88	54	16	5	396
1998Q4	76	176	217	178	101	35	12	795
<b>1998</b>	<b>264</b>	<b>486</b>	<b>663</b>	<b>553</b>	<b>296</b>	<b>114</b>	<b>52</b>	<b>2,428</b>
1999Q1	31	54	88	58	35	7	2	275
1999Q2	57	165	235	177	121	48	11	814
1999Q3	74	63	96	101	62	28	6	430
1999Q4	73	85	112	77	57	14	9	427
<b>1999</b>	<b>235</b>	<b>367</b>	<b>531</b>	<b>413</b>	<b>275</b>	<b>97</b>	<b>28</b>	<b>1,946</b>
2000Q1	38	51	82	48	31	13	6	269
2000Q2	48	113	158	125	68	30	19	561
2000Q3	65	76	103	92	47	31	14	428
2000Q4	50	147	168	169	83	40	9	666
<b>2000</b>	<b>201</b>	<b>387</b>	<b>511</b>	<b>434</b>	<b>229</b>	<b>114</b>	<b>48</b>	<b>1,924</b>
2001Q1	35	74	106	86	44	18	5	368
2001Q2	34	172	224	208	136	51	13	838
2001Q3	53	87	112	90	52	31	10	435
2001Q4	65	152	160	136	84	46	4	647
<b>2001</b>	<b>187</b>	<b>485</b>	<b>602</b>	<b>520</b>	<b>316</b>	<b>146</b>	<b>32</b>	<b>2,288</b>
2002Q1	45	60	94	76	33	16	2	326
2002Q2	37	31	83	55	47	26	6	285
2002Q3	76	109	121	117	67	42	12	544
2002Q4	61	81	104	97	63	17	14	437
<b>2002</b>	<b>219</b>	<b>281</b>	<b>402</b>	<b>345</b>	<b>210</b>	<b>101</b>	<b>34</b>	<b>1,592</b>
2003Q1	62	99	127	90	60	36	12	486
2003Q2	34	66	87	88	59	22	9	365
2003Q3	96	151	183	142	105	43	8	728
2003Q4	52	55	66	70	74	29	15	361
<b>2003</b>	<b>244</b>	<b>371</b>	<b>463</b>	<b>390</b>	<b>298</b>	<b>130</b>	<b>44</b>	<b>1,940</b>
2004Q1	57	125	137	101	72	36	10	538
2004Q2	43	61	100	62	50	29	11	356
2004Q3	80	110	124	108	101	44	17	584
2004Q4	47	75	115	81	70	26	6	420
<b>2004</b>	<b>227</b>	<b>371</b>	<b>476</b>	<b>352</b>	<b>293</b>	<b>135</b>	<b>44</b>	<b>1,898</b>
2005Q1	29	69	80	78	57	17	6	336
2005Q2	42	69	96	70	52	30	12	371
2005Q3	67	98	149	102	83	35	22	556
2005Q4	59	60	113	78	58	44	11	423
<b>2005</b>	<b>197</b>	<b>296</b>	<b>438</b>	<b>328</b>	<b>250</b>	<b>126</b>	<b>51</b>	<b>1,686</b>

	Female							Total
	0-14	15-24	25-34	35-44	45-54	55-64	65+	
1996Q1	77	64	82	49	25	8	2	307
1996Q2	71	99	114	93	49	13	10	449
1996Q3	114	116	151	103	54	13	5	556
1996Q4	104	119	134	75	40	22	10	504
<b>1996</b>	<b>366</b>	<b>398</b>	<b>481</b>	<b>320</b>	<b>168</b>	<b>56</b>	<b>27</b>	<b>1,816</b>
1997Q1	54	52	72	48	29	9	5	269
1997Q2	76	96	125	77	37	12	12	435
1997Q3	84	85	102	71	37	14	3	396
1997Q4	88	106	145	95	58	26	10	528
<b>1997</b>	<b>302</b>	<b>339</b>	<b>444</b>	<b>291</b>	<b>161</b>	<b>61</b>	<b>30</b>	<b>1,628</b>
1998Q1	46	50	54	37	17	6	4	214
1998Q2	68	140	129	109	54	24	21	545
1998Q3	77	89	93	78	39	9	9	394
1998Q4	72	101	127	91	42	20	7	460
<b>1998</b>	<b>263</b>	<b>380</b>	<b>403</b>	<b>315</b>	<b>152</b>	<b>59</b>	<b>41</b>	<b>1,613</b>
1999Q1	46	44	57	41	23	6	5	222
1999Q2	67	94	107	85	56	26	13	448
1999Q3	63	76	92	64	35	12	5	347
1999Q4	58	63	86	58	38	6	8	317
<b>1999</b>	<b>234</b>	<b>277</b>	<b>342</b>	<b>248</b>	<b>152</b>	<b>50</b>	<b>31</b>	<b>1,334</b>
2000Q1	38	38	49	36	34	5	5	205
2000Q2	72	81	76	67	41	18	17	372
2000Q3	55	77	84	58	48	13	10	345
2000Q4	58	92	108	75	44	8	9	394
<b>2000</b>	<b>223</b>	<b>288</b>	<b>317</b>	<b>236</b>	<b>167</b>	<b>44</b>	<b>41</b>	<b>1,316</b>
2001Q1	54	56	64	38	25	13	5	255
2001Q2	38	96	86	86	56	19	13	394
2001Q3	54	74	63	61	38	10	6	306
2001Q4	71	95	122	75	54	18	10	445
<b>2001</b>	<b>217</b>	<b>321</b>	<b>335</b>	<b>260</b>	<b>173</b>	<b>60</b>	<b>34</b>	<b>1,400</b>
2002Q1	36	44	55	48	30	8	3	224
2002Q2	32	50	47	30	26	10	7	202
2002Q3	86	96	96	94	48	17	10	447
2002Q4	52	60	73	45	45	11	8	294
<b>2002</b>	<b>206</b>	<b>250</b>	<b>271</b>	<b>217</b>	<b>149</b>	<b>46</b>	<b>28</b>	<b>1,167</b>
2003Q1	53	60	91	62	33	16	7	322
2003Q2	41	50	76	45	23	14	7	256
2003Q3	87	97	112	79	58	30	13	476
2003Q4	51	53	82	49	48	16	9	308
<b>2003</b>	<b>232</b>	<b>260</b>	<b>361</b>	<b>235</b>	<b>162</b>	<b>76</b>	<b>36</b>	<b>1,362</b>
2004Q1	60	87	100	66	49	11	10	383
2004Q2	52	47	81	42	37	20	11	290
2004Q3	79	77	103	74	58	24	12	427
2004Q4	50	59	68	53	37	13	9	289
<b>2004</b>	<b>241</b>	<b>270</b>	<b>352</b>	<b>235</b>	<b>181</b>	<b>68</b>	<b>42</b>	<b>1,389</b>
2005Q1	58	64	61	44	28	11	4	270
2005Q2	38	57	74	58	38	16	6	287
2005Q3	72	70	98	64	52	20	18	394
2005Q4	58	58	61	64	46	30	8	325
<b>2005</b>	<b>226</b>	<b>249</b>	<b>294</b>	<b>230</b>	<b>164</b>	<b>77</b>	<b>36</b>	<b>1,276</b>

	Both Sexes							Total
	0-14	15-24	25-34	35-44	45-54	55-64	65+	
1996Q1	126	127	186	123	76	20	5	663
1996Q2	142	245	284	239	128	37	20	1,095
1996Q3	263	214	313	225	130	42	9	1,196
1996Q4	213	233	313	200	107	50	20	1,136
<b>1996</b>	<b>744</b>	<b>819</b>	<b>1,096</b>	<b>787</b>	<b>441</b>	<b>149</b>	<b>54</b>	<b>4,090</b>
1997Q1	97	122	171	118	75	18	7	608
1997Q2	170	193	300	203	124	35	24	1,049
1997Q3	207	172	223	175	92	31	11	911
1997Q4	181	255	379	314	184	84	25	1,422
<b>1997</b>	<b>655</b>	<b>742</b>	<b>1,073</b>	<b>810</b>	<b>475</b>	<b>168</b>	<b>67</b>	<b>3,990</b>
1998Q1	96	94	122	107	44	12	9	484
1998Q2	130	334	422	326	168	81	51	1,512
1998Q3	153	161	178	166	93	25	14	790
1998Q4	148	277	344	269	143	55	19	1,255
<b>1998</b>	<b>527</b>	<b>866</b>	<b>1,066</b>	<b>868</b>	<b>448</b>	<b>173</b>	<b>93</b>	<b>4,041</b>
1999Q1	77	98	145	99	58	13	7	497
1999Q2	124	259	342	262	177	74	24	1,262
1999Q3	137	139	188	165	97	40	11	777
1999Q4	131	148	198	135	95	20	17	744
<b>1999</b>	<b>469</b>	<b>644</b>	<b>873</b>	<b>661</b>	<b>427</b>	<b>147</b>	<b>59</b>	<b>3,280</b>
2000Q1	76	89	131	84	65	18	11	474
2000Q2	120	194	234	192	109	48	36	933
2000Q3	120	153	187	150	95	44	24	773
2000Q4	108	239	276	244	127	48	18	1,060
<b>2000</b>	<b>424</b>	<b>675</b>	<b>828</b>	<b>670</b>	<b>396</b>	<b>158</b>	<b>89</b>	<b>3,240</b>

	Both Sexes							Total
	0-14	15-24	25-34	35-44	45-54	55-64	65+	
2001Q1	89	130	170	124	69	31	10	623
2001Q2	72	268	310	294	192	70	26	1,232
2001Q3	107	161	175	151	90	41	16	741
2001Q4	136	247	282	211	138	64	14	1,092
<b>2001</b>	<b>404</b>	<b>806</b>	<b>937</b>	<b>780</b>	<b>489</b>	<b>206</b>	<b>66</b>	<b>3,688</b>
2002Q1	81	104	149	124	63	24	5	550
2002Q2	69	81	130	85	73	36	13	487
2002Q3	162	205	217	211	115	59	22	991
2002Q4	113	141	177	142	108	28	22	731
<b>2002</b>	<b>425</b>	<b>531</b>	<b>673</b>	<b>562</b>	<b>359</b>	<b>147</b>	<b>62</b>	<b>2,759</b>
2003Q1	115	159	218	152	93	52	19	808
2003Q2	75	116	163	133	82	36	16	621
2003Q3	183	248	295	221	163	73	21	1,204
2003Q4	103	108	148	119	122	45	24	669
<b>2003</b>	<b>476</b>	<b>631</b>	<b>824</b>	<b>625</b>	<b>460</b>	<b>206</b>	<b>80</b>	<b>3,302</b>
2004Q1	117	212	237	167	121	47	20	921
2004Q2	95	108	181	104	87	49	22	646
2004Q3	159	187	227	182	159	68	29	1,011
2004Q4	97	134	183	134	107	39	15	709
<b>2004</b>	<b>468</b>	<b>641</b>	<b>82</b>					

# Emigration—Tables

Male									Female								
	0-14	15-24	25-34	35-44	45-54	55-64	65+	Total		0-14	15-24	25-34	35-44	45-54	55-64	65+	Total
1996Q1	53	69	103	72	36	16	10	359	1996Q1	58	49	86	39	25	13	7	277
1996Q2	45	55	96	87	42	22	4	351	1996Q2	51	59	71	59	26	21	4	291
1996Q3	75	46	77	67	29	17	4	315	1996Q3	65	64	82	61	36	12	6	326
1996Q4	91	102	150	109	86	38	13	589	1996Q4	103	85	113	74	56	18	6	455
<b>1996</b>	<b>264</b>	<b>272</b>	<b>426</b>	<b>335</b>	<b>193</b>	<b>93</b>	<b>31</b>	<b>1,614</b>	<b>1996</b>	<b>277</b>	<b>257</b>	<b>352</b>	<b>233</b>	<b>143</b>	<b>64</b>	<b>23</b>	<b>1,349</b>
1997Q1	85	92	148	107	62	31	14	539	1997Q1	79	74	104	73	34	17	12	393
1997Q2	100	119	165	169	90	53	10	706	1997Q2	89	83	124	91	65	13	13	478
1997Q3	98	108	152	142	95	31	19	645	1997Q3	92	89	128	86	53	26	-1	473
1997Q4	101	195	261	198	108	49	37	949	1997Q4	91	160	133	89	78	28	28	607
<b>1997</b>	<b>384</b>	<b>514</b>	<b>726</b>	<b>616</b>	<b>355</b>	<b>164</b>	<b>80</b>	<b>2,839</b>	<b>1997</b>	<b>351</b>	<b>406</b>	<b>489</b>	<b>339</b>	<b>230</b>	<b>84</b>	<b>52</b>	<b>1,951</b>
1998Q1	114	177	267	191	143	49	30	971	1998Q1	119	107	156	92	63	27	12	576
1998Q2	157	228	250	212	127	61	3	1,038	1998Q2	140	150	186	128	74	27	0	705
1998Q3	90	140	241	161	91	41	13	777	1998Q3	79	96	125	91	42	35	15	483
1998Q4	119	182	224	186	126	51	9	897	1998Q4	104	114	119	115	78	31	10	571
<b>1998</b>	<b>480</b>	<b>727</b>	<b>922</b>	<b>750</b>	<b>487</b>	<b>202</b>	<b>55</b>	<b>3,683</b>	<b>1998</b>	<b>442</b>	<b>467</b>	<b>586</b>	<b>426</b>	<b>257</b>	<b>120</b>	<b>37</b>	<b>2,335</b>
1999Q1	77	102	148	139	84	38	12	600	1999Q1	83	79	98	89	49	22	7	427
1999Q2	52	171	255	171	110	44	18	821	1999Q2	38	116	115	91	51	16	14	441
1999Q3	85	125	195	145	92	41	20	703	1999Q3	72	65	87	69	53	20	14	380
1999Q4	110	71	85	76	45	12	1	400	1999Q4	114	72	85	79	34	17	0	401
<b>1999</b>	<b>324</b>	<b>469</b>	<b>683</b>	<b>531</b>	<b>331</b>	<b>135</b>	<b>51</b>	<b>2,524</b>	<b>1999</b>	<b>307</b>	<b>332</b>	<b>385</b>	<b>328</b>	<b>187</b>	<b>75</b>	<b>35</b>	<b>1,649</b>
2000Q1	64	39	65	53	37	9	7	274	2000Q1	64	40	68	55	38	5	6	276
2000Q2	79	131	169	150	100	46	18	693	2000Q2	77	100	124	96	56	20	10	483
2000Q3	48	149	154	153	73	42	9	628	2000Q3	42	87	92	68	47	15	8	359
2000Q4	63	174	207	159	125	42	17	787	2000Q4	54	110	109	100	53	17	13	456
<b>2000</b>	<b>254</b>	<b>493</b>	<b>595</b>	<b>515</b>	<b>335</b>	<b>139</b>	<b>51</b>	<b>2,382</b>	<b>2000</b>	<b>237</b>	<b>337</b>	<b>393</b>	<b>319</b>	<b>194</b>	<b>57</b>	<b>37</b>	<b>1,574</b>
2001Q1	77	122	120	121	69	30	7	546	2001Q1	54	76	95	57	39	16	8	345
2001Q2	100	196	160	153	82	48	26	765	2001Q2	101	128	121	90	71	23	10	544
2001Q3	68	110	136	113	60	29	7	523	2001Q3	57	75	77	66	45	13	5	338
2001Q4	85	131	163	118	80	25	16	618	2001Q4	74	79	86	90	55	23	12	419
<b>2001</b>	<b>330</b>	<b>559</b>	<b>579</b>	<b>505</b>	<b>291</b>	<b>132</b>	<b>56</b>	<b>2,452</b>	<b>2001</b>	<b>286</b>	<b>358</b>	<b>379</b>	<b>303</b>	<b>210</b>	<b>75</b>	<b>35</b>	<b>1,646</b>
2002Q1	55	134	139	122	67	32	14	563	2002Q1	56	83	87	64	39	15	11	355
2002Q2	23	59	85	35	40	24	9	275	2002Q2	16	36	38	27	22	12	6	157
2002Q3	51	143	146	122	91	56	14	623	2002Q3	66	83	106	53	50	34	12	404
2002Q4	84	106	101	108	69	51	16	535	2002Q4	86	88	78	78	58	23	10	421
<b>2002</b>	<b>213</b>	<b>442</b>	<b>471</b>	<b>387</b>	<b>267</b>	<b>163</b>	<b>53</b>	<b>1,996</b>	<b>2002</b>	<b>224</b>	<b>290</b>	<b>309</b>	<b>222</b>	<b>169</b>	<b>84</b>	<b>39</b>	<b>1,337</b>
2003Q1	52	130	138	125	92	33	8	578	2003Q1	37	80	72	69	49	24	13	344
2003Q2	49	68	83	63	51	44	7	365	2003Q2	57	46	74	53	41	18	7	296
2003Q3	53	162	140	122	90	39	17	623	2003Q3	57	105	93	76	41	17	9	398
2003Q4	45	28	43	32	36	17	9	210	2003Q4	46	29	46	35	33	16	5	210
<b>2003</b>	<b>199</b>	<b>388</b>	<b>404</b>	<b>342</b>	<b>269</b>	<b>133</b>	<b>41</b>	<b>1,776</b>	<b>2003</b>	<b>197</b>	<b>260</b>	<b>285</b>	<b>233</b>	<b>164</b>	<b>75</b>	<b>34</b>	<b>1,248</b>
2004Q1	74	126	134	105	84	35	20	578	2004Q1	69	77	91	79	51	32	12	411
2004Q2	32	55	68	53	44	20	4	276	2004Q2	42	44	62	34	32	15	5	234
2004Q3	46	117	94	73	56	27	10	423	2004Q3	36	93	67	42	39	24	2	303
2004Q4	51	48	53	51	45	26	12	286	2004Q4	56	49	59	51	43	22	4	284
<b>2004</b>	<b>203</b>	<b>346</b>	<b>349</b>	<b>282</b>	<b>229</b>	<b>108</b>	<b>46</b>	<b>1,563</b>	<b>2004</b>	<b>203</b>	<b>263</b>	<b>279</b>	<b>206</b>	<b>165</b>	<b>93</b>	<b>23</b>	<b>1,232</b>
2005Q1	41	97	85	95	74	42	18	452	2005Q1	47	72	67	55	44	23	14	322
2005Q2	22	44	48	27	35	20	5	201	2005Q2	27	38	34	28	21	13	7	168
2005Q3	44	111	116	109	99	51	11	541	2005Q3	45	90	82	70	61	25	7	380
2005Q4	41	57	56	37	49	29	12	281	2005Q4	54	51	48	41	52	15	11	272
<b>2005</b>	<b>148</b>	<b>309</b>	<b>305</b>	<b>268</b>	<b>257</b>	<b>142</b>	<b>46</b>	<b>1,475</b>	<b>2005</b>	<b>173</b>	<b>251</b>	<b>231</b>	<b>194</b>	<b>178</b>	<b>76</b>	<b>39</b>	<b>1,142</b>

Both Sexes									Both Sexes								
	0-14	15-24	25-34	35-44	45-54	55-64	65+	Total		0-14	15-24	25-34	35-44	45-54	55-64	65+	Total
1996Q1	111	118	189	111	61	29	17	636	2001Q1	131	198	215	178	108	46	15	891
1996Q2	96	114	167	146	68	43	8	642	2001Q2	201	324	281	243	153	71	36	1,309
1996Q3	140	110	159	128	65	29	10	641	2001Q3	125	185	213	179	105	42	12	861
1996Q4	194	187	263	183	142	56	19	1,044	2001Q4	159	210	249	208	135	48	28	1,037
<b>1996</b>	<b>541</b>	<b>529</b>	<b>778</b>	<b>568</b>	<b>336</b>	<b>157</b>	<b>54</b>	<b>2,963</b>	<b>2001</b>	<b>616</b>	<b>917</b>	<b>958</b>	<b>808</b>	<b>501</b>	<b>207</b>	<b>91</b>	<b>4,098</b>
1997Q1	164	166	252	180	96	48	26	932	2002Q1	111	217	226	186	106	47	25	918
1997Q2	189	202	289	260	155	66	23	1,184	2002Q2	39	95	123	62	62	36	15	432
1997Q3	190	197	280	228	148	57	18	1,118	2002Q3	117	226	252	175	141	90	26	1,027
1997Q4	192	355	394	287	186	77	65	1,556	2002Q4	170	194	179	186	127	74	26	956
<b>1997</b>	<b>735</b>	<b>920</b>	<b>1,215</b>	<b>955</b>	<b>585</b>	<b>248</b>	<b>132</b>	<b>4,790</b>	<b>2002</b>	<b>437</b>	<b>732</b>	<b>780</b>	<b>609</b>	<b>436</b>	<b>247</b>	<b>92</b>	<b>3,333</b>
1998Q1	233	284	423	283	206	76	42	1,547	2003Q1	89	210	210	194	141	57	21	922
1998Q2	297	378	436	340	201	88	3	1,743	2003Q2	106	114	157	116	92	62	14	661
1998Q3	169	236	366	252	133	76	28	1,260	2003Q3	110	267	233	198	131	56	26	1,021
1998Q4	223	296	343	301	204	82	19	1,468	2003Q4	91	57	89	67	69	33	14	420
<b>1998</b>	<b>922</b>	<b>1,194</b>	<b>1,568</b>	<b>1,176</b>	<b>744</b>	<b>322</b>	<b>92</b>	<b>6,018</b>	<b>2003</b>	<b>396</b>	<b>648</b>	<b>689</b>	<b>575</b>	<b>433</b>	<b>208</b>	<b>75</b>	<b>3,024</b>
1999Q1	160	181	246	228	133	60	19	1,027	2004Q1	143	203	225	184	135	67	32	989
1999Q2	90	287	370	262	161	60	32	1,262	2004Q2	74	99	130	87	76	35	9	510
1999Q3	157	190	282	214	145	61	34	1,083	2004Q3	82	210	161	115	95	51	12	726
1999Q4	224	143	170	155	79	29	1	801	2004Q4	107	97	112	102	88	48	16	570
<b>1999</b>	<b>631</b>	<b>801</b>	<b>1,068</b>	<b>859</b>	<b>518</b>	<b>210</b>	<b>86</b>	<b>4,173</b>	<b>2004</b>	<b>406</b>	<b>609</b>	<b>628</b>	<b>488</b>	<b>394</b>	<b>201</b>	<b>69</b>	<b>2,795</b>
2000Q1	128	79	133	108	75	14	13	550	2005Q1	88	169	152	150	118	65	32	774
2000Q2	156	231	293	246	156	66	28	1,176	2005Q2	49	82	82	55	56	33	12	369
2000Q3	90	236	246	221	120	57	17	987	2005Q3	89	201	198	179	160	76	18	921
2000Q4	117	284	316	259	178	59	30	1,243	2005Q4	95	108	104	78				

# Net Migration—Tables

	Male							Total	Female							Total	
	0-14	15-24	25-34	35-44	45-54	55-64	65+		0-14	15-24	25-34	35-44	45-54	55-64	65+		
1996Q1	-4	-6	1	2	15	-4	-7	-3	1996Q1	19	15	-4	10	0	-5	-5	30
1996Q2	26	91	74	59	37	2	6	295	1996Q2	20	40	43	34	23	-8	6	158
1996Q3	74	52	85	55	47	12	0	325	1996Q3	49	52	69	42	18	1	-1	230
1996Q4	18	12	29	16	-19	-10	-3	43	1996Q4	1	34	21	1	-16	4	4	49
<b>1996</b>	<b>114</b>	<b>149</b>	<b>189</b>	<b>132</b>	<b>80</b>	<b>0</b>	<b>-4</b>	<b>660</b>	<b>1996</b>	<b>89</b>	<b>141</b>	<b>129</b>	<b>87</b>	<b>25</b>	<b>-8</b>	<b>4</b>	<b>467</b>
1997Q1	-42	-22	-49	-37	-16	-22	-12	-200	1997Q1	-25	-22	-32	-25	-5	-8	-7	-124
1997Q2	-6	-22	10	-43	-3	-30	2	-92	1997Q2	-13	13	1	-14	-28	-1	-1	-43
1997Q3	25	-21	-31	-38	-40	-14	-11	-130	1997Q3	-8	-4	-26	-15	-16	-12	4	-77
1997Q4	-8	-46	-27	21	18	9	-22	-55	1997Q4	-3	-54	12	6	-20	-2	-18	-79
<b>1997</b>	<b>-31</b>	<b>-111</b>	<b>-97</b>	<b>-97</b>	<b>-41</b>	<b>-57</b>	<b>-43</b>	<b>-477</b>	<b>1997</b>	<b>-49</b>	<b>-67</b>	<b>-45</b>	<b>-48</b>	<b>-69</b>	<b>-23</b>	<b>-22</b>	<b>-323</b>
1998Q1	-64	-133	-199	-121	-116	-43	-25	-701	1998Q1	-73	-57	-102	-55	-46	-21	-8	-362
1998Q2	-95	-34	43	5	-13	-4	27	-71	1998Q2	-72	-10	-57	-19	-20	-3	21	-160
1998Q3	-14	-68	-156	-73	-37	-25	-8	-381	1998Q3	-2	-7	-32	-13	-3	-26	-6	-89
1998Q4	-43	-6	-7	-8	-25	-16	3	-102	1998Q4	-32	-13	8	-24	-36	-11	-3	-111
<b>1998</b>	<b>-216</b>	<b>-241</b>	<b>-319</b>	<b>-197</b>	<b>-191</b>	<b>-88</b>	<b>3</b>	<b>-1,255</b>	<b>1998</b>	<b>-179</b>	<b>-87</b>	<b>-183</b>	<b>-111</b>	<b>-105</b>	<b>-61</b>	<b>4</b>	<b>-722</b>
1999Q1	-46	-48	-60	-81	-49	-31	-10	-325	1999Q1	-37	-35	-41	-48	-26	-16	-2	-205
1999Q2	5	-6	-20	6	11	4	-7	-7	1999Q2	29	-22	-8	-6	5	10	-1	7
1999Q3	-11	-62	-99	-44	-30	-13	-14	-273	1999Q3	-9	11	5	-5	-18	-8	-9	-33
1999Q4	-37	14	27	1	12	2	8	27	1999Q4	-56	-9	1	-21	4	-11	8	-84
<b>1999</b>	<b>-89</b>	<b>-102</b>	<b>-152</b>	<b>-118</b>	<b>-56</b>	<b>-38</b>	<b>-23</b>	<b>578</b>	<b>1999</b>	<b>-73</b>	<b>-55</b>	<b>-43</b>	<b>-80</b>	<b>-35</b>	<b>-25</b>	<b>-4</b>	<b>-315</b>
2000Q1	-26	12	17	-5	-6	4	-1	-5	2000Q1	-26	-2	-19	-19	-4	0	-1	-71
2000Q2	-31	-18	-11	-25	-32	-16	1	-132	2000Q2	-5	-19	-48	-29	-15	-2	7	-111
2000Q3	17	-73	-51	-61	-26	-11	5	-200	2000Q3	13	-10	-8	-10	1	-2	2	-14
2000Q4	-13	-27	-39	10	-42	-2	-8	-121	2000Q4	4	-18	-1	-25	-9	-9	-4	-62
<b>2000</b>	<b>-53</b>	<b>-106</b>	<b>-84</b>	<b>-81</b>	<b>-106</b>	<b>-25</b>	<b>-3</b>	<b>-458</b>	<b>2000</b>	<b>-14</b>	<b>-49</b>	<b>-76</b>	<b>-83</b>	<b>-27</b>	<b>-13</b>	<b>4</b>	<b>-258</b>
2001Q1	-42	-48	-14	-35	-25	-12	-2	-178	2001Q1	0	-20	-31	-19	-14	-3	-3	-90
2001Q2	-66	-24	64	55	54	3	-13	73	2001Q2	-63	-32	-35	-4	-15	-4	3	-150
2001Q3	-15	-23	-24	-23	-8	2	3	-88	2001Q3	-3	-1	-14	-5	-7	-3	1	-32
2001Q4	-20	21	-3	18	4	21	-12	29	2001Q4	-3	16	36	-15	-1	-5	-2	26
<b>2001</b>	<b>-143</b>	<b>-74</b>	<b>23</b>	<b>15</b>	<b>25</b>	<b>14</b>	<b>-24</b>	<b>-164</b>	<b>2001</b>	<b>-69</b>	<b>-37</b>	<b>-44</b>	<b>-43</b>	<b>-37</b>	<b>-15</b>	<b>-1</b>	<b>-246</b>
2002Q1	-10	-74	-45	-46	-34	-16	-12	-237	2002Q1	-20	-39	-32	-16	-9	-7	-8	-131
2002Q2	14	-28	-2	20	7	2	-3	10	2002Q2	16	14	9	3	4	-2	1	45
2002Q3	25	-34	-25	-5	-24	-14	-2	-79	2002Q3	20	13	-10	41	-2	-17	-2	43
2002Q4	-23	-25	3	-11	-6	-34	-2	-98	2002Q4	-34	-28	-5	-33	-13	-12	-2	-127
<b>2002</b>	<b>6</b>	<b>-161</b>	<b>-69</b>	<b>-42</b>	<b>-57</b>	<b>-62</b>	<b>-19</b>	<b>-404</b>	<b>2002</b>	<b>-18</b>	<b>-40</b>	<b>-38</b>	<b>-5</b>	<b>-20</b>	<b>-38</b>	<b>-11</b>	<b>-170</b>
2003Q1	10	-31	-11	-35	-32	3	4	-92	2003Q1	16	-20	19	-7	-16	-8	-6	-22
2003Q2	-15	-2	4	25	8	-22	2	0	2003Q2	-16	4	2	-8	-18	-4	0	-40
2003Q3	43	-11	43	20	15	4	-9	105	2003Q3	30	-8	19	3	17	13	4	78
2003Q4	7	27	23	38	38	12	6	151	2003Q4	5	24	36	14	15	0	4	98
<b>2003</b>	<b>45</b>	<b>-17</b>	<b>59</b>	<b>48</b>	<b>29</b>	<b>-3</b>	<b>3</b>	<b>164</b>	<b>2003</b>	<b>35</b>	<b>0</b>	<b>76</b>	<b>2</b>	<b>-2</b>	<b>1</b>	<b>2</b>	<b>114</b>
2004Q1	-17	-1	3	-4	-12	1	-10	-40	2004Q1	-9	10	9	-13	-2	-21	-2	-28
2004Q2	11	6	32	9	6	9	7	80	2004Q2	10	3	19	8	5	5	6	56
2004Q3	34	-7	30	35	45	17	7	161	2004Q3	43	-16	36	32	19	0	10	124
2004Q4	-4	27	62	30	25	0	-6	134	2004Q4	-6	10	9	2	-6	-9	5	5
<b>2004</b>	<b>24</b>	<b>25</b>	<b>127</b>	<b>70</b>	<b>64</b>	<b>27</b>	<b>-2</b>	<b>335</b>	<b>2004</b>	<b>38</b>	<b>7</b>	<b>73</b>	<b>29</b>	<b>16</b>	<b>-25</b>	<b>19</b>	<b>157</b>
2005Q1	-12	-28	-5	-17	-17	-25	-12	-116	2005Q1	11	-8	-6	-11	-16	-12	-10	-52
2005Q2	20	25	48	43	17	10	7	170	2005Q2	11	19	40	30	17	3	-1	119
2005Q3	23	-13	33	-7	-16	-16	11	15	2005Q3	27	-20	16	-6	-9	-5	11	14
2005Q4	18	3	57	41	9	15	-1	142	2005Q4	4	7	13	23	-6	15	-3	53
<b>2005</b>	<b>49</b>	<b>-13</b>	<b>133</b>	<b>60</b>	<b>-7</b>	<b>-16</b>	<b>5</b>	<b>211</b>	<b>2005</b>	<b>53</b>	<b>-2</b>	<b>63</b>	<b>36</b>	<b>-14</b>	<b>1</b>	<b>-3</b>	<b>134</b>

	Both Sexes							Total	Both Sexes							Total	
	0-14	15-24	25-34	35-44	45-54	55-64	65+		0-14	15-24	25-34	35-44	45-54	55-64	65+		
1996Q1	15	9	-3	12	15	-9	-12	27	2001Q1	-42	-68	-45	-54	-39	-15	-5	-268
1996Q2	46	131	117	93	60	-6	12	453	2001Q2	-129	-56	29	51	39	-1	-10	-77
1996Q3	123	104	154	97	65	13	-1	555	2001Q3	-18	-24	-38	-28	-15	-1	4	-120
1996Q4	19	46	50	17	-35	-6	1	92	2001Q4	-23	37	33	3	3	16	-14	55
<b>1996</b>	<b>203</b>	<b>290</b>	<b>318</b>	<b>219</b>	<b>105</b>	<b>-8</b>	<b>0</b>	<b>1,127</b>	<b>2001</b>	<b>-212</b>	<b>-111</b>	<b>-21</b>	<b>-28</b>	<b>-12</b>	<b>-1</b>	<b>-25</b>	<b>-410</b>
1997Q1	-67	-44	-81	-62	-21	-30	-19	-324	2002Q1	-30	-113	-77	-62	-43	-23	-20	-368
1997Q2	-19	-9	11	-57	-31	-31	1	-135	2002Q2	30	-14	7	23	11	0	-2	55
1997Q3	17	-25	-57	-53	-56	-26	-7	-207	2002Q3	45	-21	-35	36	-26	-31	-4	-36
1997Q4	-11	-100	-15	27	-2	7	-40	-134	2002Q4	-57	-53	-2	-44	-19	-46	4	-225
<b>1997</b>	<b>-80</b>	<b>-178</b>	<b>-142</b>	<b>-145</b>	<b>-110</b>	<b>-80</b>	<b>-65</b>	<b>-800</b>	<b>2002</b>	<b>-12</b>	<b>-201</b>	<b>-107</b>	<b>-47</b>	<b>-77</b>	<b>-100</b>	<b>-30</b>	<b>-574</b>
1998Q1	-137	-190	-301	-176	-162	-64	-33	-1,063	2003Q1	26	-51	8	-42	-48	-5	-2	-114
1998Q2	-167	-44	-14	-14	-33	-7	48	-231	2003Q2	-31	2	6	17	-10	-26	2	-40
1998Q3	-16	-75	-188	-86	-40	-51	-14	-470	2003Q3	73	-19	62	23	32	17	-5	183
1998Q4	-75	-19	1	-32	-61	-27	0	-213	2003Q4	12	51	59	52	53	12	10	249
<b>1998</b>	<b>-395</b>	<b>-328</b>	<b>-502</b>	<b>-308</b>	<b>-296</b>	<b>-149</b>	<b>1</b>	<b>-1,977</b>	<b>2003</b>	<b>80</b>	<b>-17</b>	<b>135</b>	<b>50</b>	<b>27</b>	<b>-2</b>	<b>5</b>	<b>278</b>
1999Q1	-83	-83	-101	-129	-75	-47	-12	-530	2004Q1	-26	9	12	-17	-14	-20	-12	-68
1999Q2	34	-28	-28	0	16	14	-8	0	2004Q2	21	9	51	17	11	14	13	136
1999Q3	-20	-51	-94	-49	-48	-21	-23	-306	2004Q3	77	-23	66	67	64	17	17	285
1999Q4	-93	5	28	-20	16	-9	16	-57	2004Q4	-10	37	71	32	19	-9	-1	139
<b>1999</b>	<b>-162</b>	<b>-157</b>	<b>-195</b>	<b>-198</b>	<b>-91</b>	<b>-63</b>	<b>-27</b>	<b>-893</b>	<b>2004</b>	<b>62</b>	<b>32</b>	<b>200</b>	<b>99</b>	<b>80</b>	<b>2</b>	<b>17</b>	<b>492</b>
2000Q1	-52	10	-2	-24	-10	4	-2	-76	2005Q1	-1	-36	-11	-28	-33	-37	-22	-168
2000Q2	-36	-37	-59	-54	-47	-18	8	-243	2005Q2	31	44	88	73	34	13	6	289
2000Q3	30	-83	-59	-71	-25	-13	7	-214	2005Q3	50	-33	49	-13	-25	-21	22	29
2000Q4	-9	-45	-40	-15	-51	-11	-12	-183	2005Q4	22	10	70	64	3	30	-4	195
<b>2000</b>	<b>-67</b>	<b>-155</b>	<b>-160</b>	<b>-164</b>	<b>-133</b>	<b>-38</b>	<b>1</b>	<b>-716</b>	<b>2005</b>	<b>102</b>	<b>-15</b>	<b>196</b>	<b>96</b>	<b>-21</b>	<b>-15</b>	<b>2</b>	<b>345</b>

# Turnover—Tables

Male								Female									
	0-14	15-24	25-34	35-44	45-54	55-64	65+	Total		0-14	15-24	25-34	35-44	45-54	55-64	65+	Total
1996Q1	102	132	207	146	87	28	13	715	1996Q1	135	113	168	88	50	21	9	584
1996Q2	116	201	266	233	121	46	14	997	1996Q2	122	158	185	152	75	34	14	740
1996Q3	224	144	239	189	105	46	8	955	1996Q3	179	180	233	164	90	25	11	882
1996Q4	200	216	329	234	153	66	23	1,221	1996Q4	207	204	247	149	96	40	16	959
1996	<b>642</b>	<b>693</b>	<b>1,041</b>	<b>802</b>	<b>466</b>	<b>186</b>	<b>58</b>	<b>3,888</b>	1996	<b>643</b>	<b>655</b>	<b>833</b>	<b>553</b>	<b>311</b>	<b>120</b>	<b>50</b>	<b>3,165</b>
1997Q1	128	162	247	177	108	40	16	878	1997Q1	133	126	176	121	63	26	17	662
1997Q2	194	216	340	295	177	76	22	1,320	1997Q2	165	179	249	168	102	25	25	913
1997Q3	221	195	273	246	150	48	27	1,160	1997Q3	176	174	230	157	90	40	2	869
1997Q4	194	344	495	417	234	107	52	1,843	1997Q4	179	266	278	184	136	54	38	1,135
1997	<b>737</b>	<b>917</b>	<b>1,355</b>	<b>1,135</b>	<b>669</b>	<b>271</b>	<b>117</b>	<b>5,201</b>	1997	<b>653</b>	<b>745</b>	<b>933</b>	<b>630</b>	<b>391</b>	<b>145</b>	<b>82</b>	<b>3,579</b>
1998Q1	164	221	335	261	170	55	35	1,241	1998Q1	165	157	210	129	80	33	16	790
1998Q2	219	422	543	429	241	118	33	2,005	1998Q2	208	290	315	237	128	51	21	1,250
1998Q3	166	212	326	249	145	57	18	1,173	1998Q3	156	185	218	169	81	44	24	877
1998Q4	195	358	441	364	227	86	21	1,692	1998Q4	176	215	246	206	120	51	17	1,031
1998	<b>744</b>	<b>1,213</b>	<b>1,645</b>	<b>1,303</b>	<b>783</b>	<b>316</b>	<b>107</b>	<b>6,111</b>	1998	<b>705</b>	<b>847</b>	<b>989</b>	<b>741</b>	<b>409</b>	<b>179</b>	<b>78</b>	<b>3,948</b>
1999Q1	108	156	236	197	119	45	14	875	1999Q1	129	123	155	130	72	28	12	649
1999Q2	109	336	490	348	231	92	29	1,635	1999Q2	105	210	222	176	107	42	27	889
1999Q3	159	188	291	246	154	69	26	1,133	1999Q3	135	141	179	133	88	32	19	727
1999Q4	183	156	197	153	102	26	10	827	1999Q4	172	135	171	137	72	23	8	718
1999	<b>559</b>	<b>836</b>	<b>1,214</b>	<b>944</b>	<b>606</b>	<b>232</b>	<b>79</b>	<b>4,470</b>	1999	<b>541</b>	<b>609</b>	<b>727</b>	<b>576</b>	<b>339</b>	<b>125</b>	<b>66</b>	<b>2,983</b>
2000Q1	102	90	147	101	68	22	13	543	2000Q1	102	78	117	91	72	10	11	481
2000Q2	127	244	327	275	168	76	37	1,254	2000Q2	149	181	200	163	97	38	27	855
2000Q3	113	225	257	245	120	73	23	1,056	2000Q3	97	164	176	126	95	28	18	704
2000Q4	113	321	375	328	208	82	26	1,453	2000Q4	112	202	217	175	97	25	22	850
2000	<b>455</b>	<b>880</b>	<b>1,106</b>	<b>949</b>	<b>564</b>	<b>253</b>	<b>99</b>	<b>4,306</b>	2000	<b>460</b>	<b>625</b>	<b>710</b>	<b>555</b>	<b>361</b>	<b>101</b>	<b>78</b>	<b>2,890</b>
2001Q1	112	196	226	207	113	48	12	914	2001Q1	108	132	159	95	64	29	13	600
2001Q2	134	368	384	361	218	99	39	1,603	2001Q2	139	224	207	176	127	42	23	938
2001Q3	121	197	248	203	112	60	17	958	2001Q3	111	149	140	127	83	23	11	644
2001Q4	150	283	323	254	164	71	20	1,265	2001Q4	145	174	208	165	109	41	22	864
2001	<b>517</b>	<b>1,044</b>	<b>1,181</b>	<b>1,025</b>	<b>607</b>	<b>278</b>	<b>88</b>	<b>4,740</b>	2001	<b>503</b>	<b>679</b>	<b>714</b>	<b>563</b>	<b>383</b>	<b>135</b>	<b>69</b>	<b>3,046</b>
2002Q1	100	194	233	198	100	48	16	889	2002Q1	92	127	142	112	69	23	14	579
2002Q2	60	90	168	90	87	50	15	560	2002Q2	48	86	85	57	48	22	13	359
2002Q3	127	252	267	239	158	98	26	1,167	2002Q3	152	179	202	147	98	51	22	851
2002Q4	145	187	205	205	132	68	30	972	2002Q4	138	148	151	123	103	34	18	715
2002	<b>432</b>	<b>723</b>	<b>873</b>	<b>732</b>	<b>477</b>	<b>264</b>	<b>87</b>	<b>3,588</b>	2002	<b>430</b>	<b>540</b>	<b>580</b>	<b>439</b>	<b>318</b>	<b>130</b>	<b>67</b>	<b>2,504</b>
2003Q1	114	229	265	215	152	69	20	1,064	2003Q1	90	140	163	131	82	40	20	666
2003Q2	83	134	170	151	110	66	16	730	2003Q2	98	96	150	98	64	32	14	552
2003Q3	149	313	323	264	195	82	25	1,351	2003Q3	144	202	205	155	99	47	22	874
2003Q4	97	83	109	102	110	46	24	571	2003Q4	97	82	128	84	81	32	14	518
2003	<b>443</b>	<b>759</b>	<b>867</b>	<b>732</b>	<b>567</b>	<b>263</b>	<b>85</b>	<b>3,716</b>	2003	<b>429</b>	<b>520</b>	<b>646</b>	<b>468</b>	<b>326</b>	<b>151</b>	<b>70</b>	<b>2,610</b>
2004Q1	131	251	271	206	156	71	30	1,116	2004Q1	129	164	191	145	100	43	22	794
2004Q2	75	116	168	115	94	49	15	632	2004Q2	94	91	143	76	69	35	16	524
2004Q3	126	227	218	181	157	71	27	1,007	2004Q3	115	170	170	116	97	48	14	730
2004Q4	98	123	168	132	115	52	18	706	2004Q4	106	108	127	104	80	35	13	573
2004	<b>430</b>	<b>717</b>	<b>825</b>	<b>634</b>	<b>522</b>	<b>243</b>	<b>90</b>	<b>3,461</b>	2004	<b>444</b>	<b>533</b>	<b>631</b>	<b>441</b>	<b>346</b>	<b>161</b>	<b>65</b>	<b>2,621</b>
2005Q1	70	166	165	173	131	59	24	788	2005Q1	105	136	128	99	72	34	18	592
2005Q2	64	113	144	97	87	50	17	572	2005Q2	65	95	108	86	59	29	13	455
2005Q3	111	209	265	211	182	86	33	1,097	2005Q3	117	160	180	134	113	45	25	774
2005Q4	100	117	169	115	107	73	23	704	2005Q4	112	109	109	105	98	45	19	597
2005	<b>345</b>	<b>605</b>	<b>743</b>	<b>596</b>	<b>507</b>	<b>268</b>	<b>97</b>	<b>3,161</b>	2005	<b>399</b>	<b>500</b>	<b>525</b>	<b>424</b>	<b>342</b>	<b>153</b>	<b>75</b>	<b>2,418</b>

Both Sexes								Both Sexes									
	0-14	15-24	25-34	35-44	45-54	55-64	65+	Total		0-14	15-24	25-34	35-44	45-54	55-64	65+	Total
1996Q1	237	245	375	234	137	49	22	1,299	2001Q1	220	328	385	302	177	77	25	1,514
1996Q2	238	359	451	385	196	80	28	1,737	2001Q2	273	592	591	537	345	141	62	2,541
1996Q3	403	324	472	353	195	71	19	1,837	2001Q3	232	346	388	330	195	83	28	1,602
1996Q4	407	420	576	383	249	106	39	2,180	2001Q4	295	457	531	419	273	112	42	2,129
1996	<b>1,285</b>	<b>1,348</b>	<b>1,874</b>	<b>1,355</b>	<b>777</b>	<b>306</b>	<b>108</b>	<b>7,053</b>	2001	<b>1,020</b>	<b>1,723</b>	<b>1,895</b>	<b>1,588</b>	<b>990</b>	<b>413</b>	<b>157</b>	<b>7,786</b>
1997Q1	261	288	423	298	171	66	33	1,540	2002Q1	192	321	375	310	169	71	30	1,468
1997Q2	359	395	589	463	279	101	47	2,233	2002Q2	108	176	253	147	135	72	28	919
1997Q3	397	369	503	403	240	88	29	2,029	2002Q3	279	431	469	386	256	149	48	2,018
1997Q4	373	610	773	601	370	161	90	2,978	2002Q4	283	335	356	328	235	102	48	1,687
1997	<b>1,390</b>	<b>1,662</b>	<b>2,288</b>	<b>1,765</b>	<b>1,060</b>	<b>416</b>	<b>199</b>	<b>8,780</b>	2002	<b>862</b>	<b>1,263</b>	<b>1,453</b>	<b>1,171</b>	<b>795</b>	<b>394</b>	<b>154</b>	<b>6,092</b>
1998Q1	329	378	545	390	250	88	51	2,031	2003Q1	204	369	428	346	234	109	40	1,730
1998Q2	427	712	858	666	369	169	54	3,255	2003Q2	181	230	320	249	174	98	30	1,282
1998Q3	322	397	544	418	226	101	42	2,050	2003Q3	293	515	528	419	294	129	47	2,225
1998Q4	371	573	687	570	347	137	38	2,723	2003Q4	194	165	237	186	191	78	38	1,089
1998	<b>1,449</b>	<b>2,060</b>	<b>2,634</b>	<b>2,044</b>	<b>1,192</b>	<b>495</b>	<b>185</b>	<b>10,059</b>	2003	<b>872</b>	<b>1,279</b>	<b>1,513</b>	<b>1,200</b>	<b>893</b>	<b>414</b>	<b>155</b>	<b>6,326</b>
1999Q1	237	279	391	327	191	73	26	1,524	2004Q1	260	415	462	351	256	114	52	1,910
1999Q2	214	546	712	524	338	134	56	2,524	2004Q2	169	207	311	191	163	84	31	1,156
1999Q3	294	329	470	379	242	101	45	1,860	2004Q3	241	397	388	297	254	119	41	1,737
1999Q4	355	291	368	290	174	49	18	1,545	2004Q4	204	231	295	236	195	87	31	1,279
1999	<b>1,100</b>	<b>1,445</b>	<b>1,941</b>	<b>1,520</b>	<b>945</b>	<b>357</b>	<b>145</b>	<b>7,453</b>	2004	<b>874</b>	<b>1,250</b>	<b>1,456</b>	<b>1,075</b>	<b>868</b>	<b>404</b>	<b>155</b>	<b>6,082</b>
2000Q1	204	168	264	192	140	32	24	1,024	2005Q1	175	302	293	272	203	93	42	1,380
2000Q2	276	425	527														

## Median Length of Residency —Tables

	1999	2000	2001	2002	2003	2004	2005
	-----Number of Years-----						
Out-Migrants	2	2	3	2	3	3	3
Non-Migrants	7	7	8	8	7	7	7
Out-Migrant Males	2	1	2	2	2	2	2
Out-Migrant Females	3	2	2	3	3	3	3
Non-Migrant Males	7	7	6	7	7	6	6
Non-Migrant Females	7	7	7	8	8	8	8
Out-Migrant less than 15	3	2	3	3	3	3	3
Out-Migrant 15–24	1	1	1	1	2	2	2
Out-Migrant 25–34	1	2	2	2	2	2	2
Out-Migrant 35–44	2	3	3	3	3	3	3
Out-Migrant 45–54	2	3	4	3	4	4	4
Out-Migrant 55–64	2	7	6	6	6	4	5
Out-Migrant 65 or more	8	13	12	13	13	15	14
Non-Migrant less than 15	5	5	6	6	6	5	5
Non-Migrant 15–24	4	3	4	4	3	3	2
Non-Migrant 25–34	5	4	5	5	4	4	4
Non-Migrant 35–44	8	7	9	8	8	8	8
Non-Migrant 45–54	10	10	11	12	12	12	12
Non-Migrant 55–64	13	12	13	14	14	14	14
Non-Migrant 65 or more	15	15	15	15	15	15	15
Out-Migrant Status Aboriginals	1	3	3	2	3	3	3
Out-Migrant Non-Aboriginals	2	2	3	2	3	3	3
Non-Migrant Status Aboriginals	8	7	8	8	7	6	6
Non-Migrant Non-Aboriginals	7	7	8	8	7	7	7

*Notes:* '15' refers to median length of residency as **fifteen or more** years. Data after fifteen years are limited by the Yukon Health Care registration file.

These data were generated by comparing January 1<sup>st</sup> populations in successive years. Anyone who is in both datasets is considered a non-migrant. Anyone who moved out and moved back in within a single calendar year is counted as a non-migrant. Those who were in the population dataset on January 1<sup>st</sup> of a given year and not in the dataset on the following January 1<sup>st</sup> are counted as out-migrants.

'Median length of residency' refers to the value at which one-half of the residency lengths are higher and one-half are lower. This middle point is a better indicator of length of residency than an 'average' length would be.

# Length of Continuous Residency—Tables

2000								2005									
Number of Years								Number of Years									
		Less than 1	1-3	4-6	7-9	10-14	15 or more	Total			Less than 1	1-3	4-6	7-9	10-14	15 or more	Total
Status Aboriginal	0-14	201	344	262	239	212	0	1,258	Status Aboriginal	0-14	109	300	199	152	278	0	1,038
Non-Aboriginal	0-14	671	1,546	1,120	941	993	0	5,271	Non-Aboriginal	0-14	575	1,491	951	757	999	0	4,773
<b>Total</b>	<b>0-14</b>	<b>872</b>	<b>1,890</b>	<b>1,382</b>	<b>1,180</b>	<b>1,205</b>	<b>0</b>	<b>6,529</b>	<b>Total</b>	<b>0-14</b>	<b>684</b>	<b>1,791</b>	<b>1,150</b>	<b>909</b>	<b>1,277</b>	<b>0</b>	<b>5,811</b>
Status Aboriginal	15-24	191	276	145	48	59	109	828	Status Aboriginal	15-24	102	210	99	77	105	348	941
Non-Aboriginal	15-24	818	1,054	447	225	252	560	3,356	Non-Aboriginal	15-24	426	663	283	247	494	1,442	3,555
<b>Total</b>	<b>15-24</b>	<b>1,009</b>	<b>1,330</b>	<b>592</b>	<b>273</b>	<b>311</b>	<b>669</b>	<b>4,184</b>	<b>Total</b>	<b>15-24</b>	<b>528</b>	<b>873</b>	<b>382</b>	<b>324</b>	<b>599</b>	<b>1,790</b>	<b>4,496</b>
Status Aboriginal	25-34	130	158	98	144	189	37	756	Status Aboriginal	25-34	97	232	135	49	53	176	742
Non-Aboriginal	25-34	655	1,196	681	561	378	23	3,494	Non-Aboriginal	25-34	647	1,298	551	263	223	398	3,380
<b>Total</b>	<b>25-34</b>	<b>785</b>	<b>1,354</b>	<b>779</b>	<b>705</b>	<b>567</b>	<b>60</b>	<b>4,250</b>	<b>Total</b>	<b>25-34</b>	<b>744</b>	<b>1,530</b>	<b>686</b>	<b>312</b>	<b>276</b>	<b>574</b>	<b>4,122</b>
Status Aboriginal	35-44	139	176	101	109	133	307	965	Status Aboriginal	35-44	104	259	154	64	112	328	1,021
Non-Aboriginal	35-44	534	1,082	831	830	911	839	5,027	Non-Aboriginal	35-44	448	985	604	495	773	894	4,199
<b>Total</b>	<b>35-44</b>	<b>673</b>	<b>1,258</b>	<b>932</b>	<b>939</b>	<b>1,044</b>	<b>1,146</b>	<b>5,992</b>	<b>Total</b>	<b>35-44</b>	<b>552</b>	<b>1,244</b>	<b>758</b>	<b>559</b>	<b>885</b>	<b>1,222</b>	<b>5,220</b>
Status Aboriginal	45-54	58	93	66	61	83	231	592	Status Aboriginal	45-54	58	134	117	54	78	307	748
Non-Aboriginal	45-54	353	708	582	632	799	1,618	4,692	Non-Aboriginal	45-54	374	879	560	489	833	2,116	5,251
<b>Total</b>	<b>45-54</b>	<b>411</b>	<b>801</b>	<b>648</b>	<b>693</b>	<b>882</b>	<b>1,849</b>	<b>5,284</b>	<b>Total</b>	<b>45-54</b>	<b>432</b>	<b>1,013</b>	<b>677</b>	<b>543</b>	<b>911</b>	<b>2,423</b>	<b>5,999</b>
Status Aboriginal	55-64	23	41	27	49	46	167	353	Status Aboriginal	55-64	23	84	50	36	54	205	452
Non-Aboriginal	55-64	139	267	251	291	322	911	2,181	Non-Aboriginal	55-64	169	410	263	260	465	1,634	3,201
<b>Total</b>	<b>55-64</b>	<b>162</b>	<b>308</b>	<b>278</b>	<b>340</b>	<b>368</b>	<b>1,078</b>	<b>2,534</b>	<b>Total</b>	<b>55-64</b>	<b>192</b>	<b>494</b>	<b>313</b>	<b>296</b>	<b>519</b>	<b>1,839</b>	<b>3,653</b>
Status Aboriginal	65+	20	22	21	19	34	207	323	Status Aboriginal	65+	13	43	34	21	34	257	402
Non-Aboriginal	65+	73	152	108	166	144	814	1,457	Non-Aboriginal	65+	78	179	150	111	262	1,104	1,884
<b>Total</b>	<b>65+</b>	<b>93</b>	<b>174</b>	<b>129</b>	<b>185</b>	<b>178</b>	<b>1,021</b>	<b>1,780</b>	<b>Total</b>	<b>65+</b>	<b>91</b>	<b>222</b>	<b>184</b>	<b>132</b>	<b>296</b>	<b>1,361</b>	<b>2,286</b>
Status Aboriginal	Male	430	563	330	309	304	446	2,382	Status Aboriginal	Male	301	693	408	191	315	616	2,524
Non-Aboriginal	Male	1,817	3,186	1,984	1,773	1,813	2,394	12,967	Non-Aboriginal	Male	1,534	3,238	1,707	1,306	1,928	3,609	13,322
<b>Total</b>	<b>Male</b>	<b>2,247</b>	<b>3,749</b>	<b>2,314</b>	<b>2,082</b>	<b>2,117</b>	<b>2,840</b>	<b>15,349</b>	<b>Total</b>	<b>Male</b>	<b>1,835</b>	<b>3,931</b>	<b>2,115</b>	<b>1,497</b>	<b>2,243</b>	<b>4,225</b>	<b>15,846</b>
Status Aboriginal	Female	332	547	390	360	452	612	2,693	Status Aboriginal	Female	205	569	380	262	399	1,005	2,820
Non-Aboriginal	Female	1,426	2,819	2,036	1,873	1,986	2,371	12,511	Non-Aboriginal	Female	1,183	2,667	1,655	1,316	2,121	3,979	12,921
<b>Total</b>	<b>Female</b>	<b>1,758</b>	<b>3,366</b>	<b>2,426</b>	<b>2,233</b>	<b>2,438</b>	<b>2,983</b>	<b>15,204</b>	<b>Total</b>	<b>Female</b>	<b>1,388</b>	<b>3,236</b>	<b>2,035</b>	<b>1,578</b>	<b>2,520</b>	<b>4,984</b>	<b>15,741</b>
Status Aboriginal	<b>Total</b>	762	1,110	720	669	756	1,058	5,075	Status Aboriginal	<b>Total</b>	506	1,262	788	453	714	1,621	5,344
Non-Aboriginal	<b>Total</b>	3,243	6,005	4,020	3,646	3,799	4,765	25,478	Non-Aboriginal	<b>Total</b>	2,717	5,905	3,362	2,622	4,049	7,588	26,243
<b>Total</b>	<b>Total</b>	<b>4,005</b>	<b>7,115</b>	<b>4,740</b>	<b>4,315</b>	<b>4,555</b>	<b>5,823</b>	<b>30,553</b>	<b>Total</b>	<b>Total</b>	<b>3,223</b>	<b>7,167</b>	<b>4,150</b>	<b>3,075</b>	<b>4,763</b>	<b>9,209</b>	<b>31,587</b>

Information sheet no. 77.06—April '07