

YUKON BUREAU OF STATISTICS

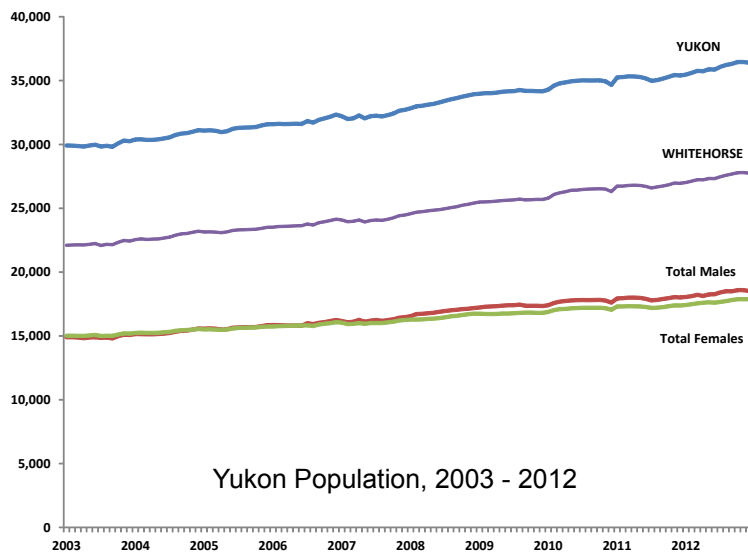


Population Report December 2012

Highlights:

- In December 2012, the estimated population of Yukon was 36,402; an increase of 1,009, or 2.9%, compared to 35,393 in December 2011.
- Between December 2003 and December 2012, Yukon's total population has increased by 6,147, or 20.3%. The population of Whitehorse has increased by 5,328, or 23.8%; Dawson City has increased by 212, or 11.9%; and Watson Lake has decreased by 39, or 2.5%.

Monthly Yukon Population Estimates



All figures in this publication were calculated by the Yukon Bureau of Statistics based on data provided by Yukon Department of Health and Social Services.

Population estimates for July 2010 and later are based on regression modelling. Thus, while estimates from July 2010 onward are still comparable to figures published in previous years, they have been derived using a different methodology.

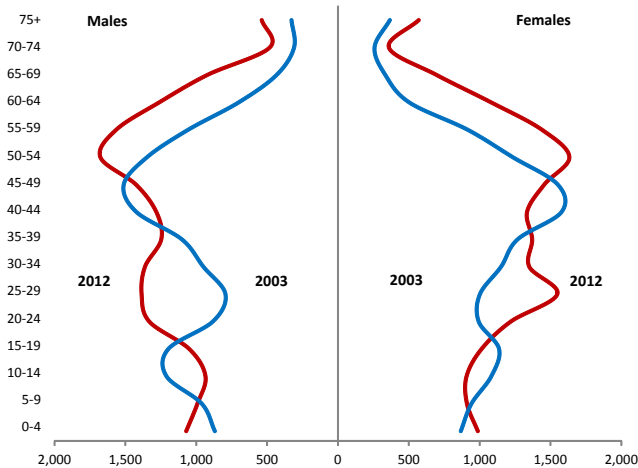
- Yukon's population was 33,796 at the start of 1997. It decreased steadily for five years and then held at around 30,000 in 2002 and 2003. In 2004, the population began to climb.
- Within the last two quarters of 2011, Yukon's population increased from 34,974 in July (third quarter) to a 2011 high of 35,440 in November (fourth quarter).
- In each quarter of 2012, Yukon's population has showed strong growth, setting successive new all-time highs¹ within each quarter: 35,769 in March (first quarter); 35,891 in May (second quarter); 36,304 in September (third quarter) and 36,461 in November (fourth quarter).
- The December 2012 population increased by 1,009 people, or 2.9%, compared to one year prior.

| | 2003 | 2004 | 2005 | 2006 | 2007 | 2008 | 2009 | 2010 | 2011 | 2012 |
|-----------------------|---------------|---------------|---------------|---------------|---------------|---------------|---------------|---------------|---------------|---------------|
| Jan | 29,912 | 30,387 | 31,084 | 31,585 | 32,212 | 32,831 | 33,969 | 34,286 | 35,251 | 35,474 |
| Feb | 29,906 | 30,403 | 31,113 | 31,612 | 31,994 | 32,992 | 34,013 | 34,610 | 35,278 | 35,610 |
| Mar | 29,880 | 30,361 | 31,074 | 31,594 | 32,044 | 33,034 | 34,016 | 34,789 | 35,338 | 35,769 |
| Apr | 29,834 | 30,359 | 30,960 | 31,603 | 32,278 | 33,111 | 34,055 | 34,862 | 35,328 | 35,730 |
| May | 29,913 | 30,395 | 31,036 | 31,630 | 32,049 | 33,181 | 34,132 | 34,950 | 35,287 | 35,891 |
| Jun | 29,976 | 30,469 | 31,222 | 31,608 | 32,212 | 33,294 | 34,157 | 34,984 | 35,175 | 35,862 |
| Jul | 29,834 | 30,553 | 31,296 | 31,832 | 32,253 | 33,421 | 34,175 | 35,022 | 34,974 | 36,079 |
| Aug | 29,893 | 30,740 | 31,324 | 31,704 | 32,196 | 33,537 | 34,264 | 35,011 | 35,044 | 36,229 |
| Sep | 29,810 | 30,848 | 31,334 | 31,931 | 32,299 | 33,627 | 34,192 | 35,012 | 35,156 | 36,304 |
| Oct | 30,087 | 30,888 | 31,361 | 32,039 | 32,423 | 33,738 | 34,188 | 35,023 | 35,293 | 36,459 |
| Nov | 30,302 | 30,994 | 31,485 | 32,165 | 32,639 | 33,839 | 34,170 | 34,949 | 35,440 | 36,461 |
| Dec | 30,255 | 31,127 | 31,587 | 32,335 | 32,714 | 33,928 | 34,157 | 34,667 | 35,393 | 36,402 |
| Annual Average | 29,967 | 30,627 | 31,240 | 31,803 | 32,276 | 33,378 | 34,124 | 34,847 | 35,246 | 36,023 |

¹ Accurate population estimates for the gold rush era are not available. However, the first Census population estimate for Yukon was in 1901 - population 27,219.

Yukon Population by Age Groups and Sex, Dec 2003 to Dec 2012

Population in Dec 2003 and Dec 2012



| Age Groups | Both Sexes | Dec '12 | | % Change from Dec '03 to Dec '12 | | |
|-----------------------|------------|---------|---------|----------------------------------|-------|---------|
| | | Males | Females | Both Sexes | Males | Females |
| 0-4 | 2,058 | 1,071 | 987 | 18.5 | 23.2 | 13.8 |
| 5-9 | 1,902 | 992 | 910 | 0.0 | 3.2 | -3.4 |
| 10-14 | 1,842 | 935 | 907 | -19.6 | -22.7 | -16.1 |
| 15-19 | 2,064 | 1,050 | 1,014 | -11.6 | -12.3 | -10.8 |
| 20-24 | 2,552 | 1,332 | 1,220 | 36.0 | 50.8 | 22.9 |
| 25-29 | 2,935 | 1,386 | 1,548 | 63.4 | 74.6 | 54.5 |
| 30-34 | 2,712 | 1,362 | 1,350 | 29.1 | 43.4 | 17.3 |
| 35-39 | 2,617 | 1,247 | 1,371 | 10.4 | 13.1 | 8.1 |
| 40-44 | 2,616 | 1,282 | 1,334 | -12.8 | -9.9 | -15.4 |
| 45-49 | 2,883 | 1,426 | 1,456 | -5.9 | -5.7 | -6.1 |
| 50-54 | 3,310 | 1,677 | 1,633 | 28.3 | 24.5 | 32.5 |
| 55-59 | 3,004 | 1,565 | 1,439 | 52.3 | 48.0 | 57.3 |
| 60-64 | 2,341 | 1,261 | 1,080 | 94.8 | 80.1 | 115.2 |
| 65-69 | 1,618 | 922 | 696 | 110.9 | 112.9 | 108.3 |
| 70-74 | 841 | 482 | 359 | 48.1 | 55.4 | 39.3 |
| 75+ | 1,107 | 538 | 570 | 59.6 | 63.9 | 55.7 |
| All Ages ¹ | 36,402 | 18,527 | 17,876 | 20.3 | 22.9 | 17.8 |

Population has grown and aged since 2003 - particularly as the baby-boom (currently age 47-66) and echo-boom populations (approximately age 20-35) have aged.

December 2012 figures show:

- 15.9% of Yukon's population was under 15 years of age, 74.3% was between 15 and 64 years of age, and 9.8% was 65 years of age or older. In December 2003, 19.6% of Yukon's population was under 15 years of age, 73.7% was between 15 and 64 years of age, and 6.7% was 65 years of age or older.
- Yukon's population consisted of 18,527 males (50.9%) and 17,876 females (49.1%). In December 2003, there was less of a gender gap: males comprised 49.8% of Yukon's population; females 50.2%.

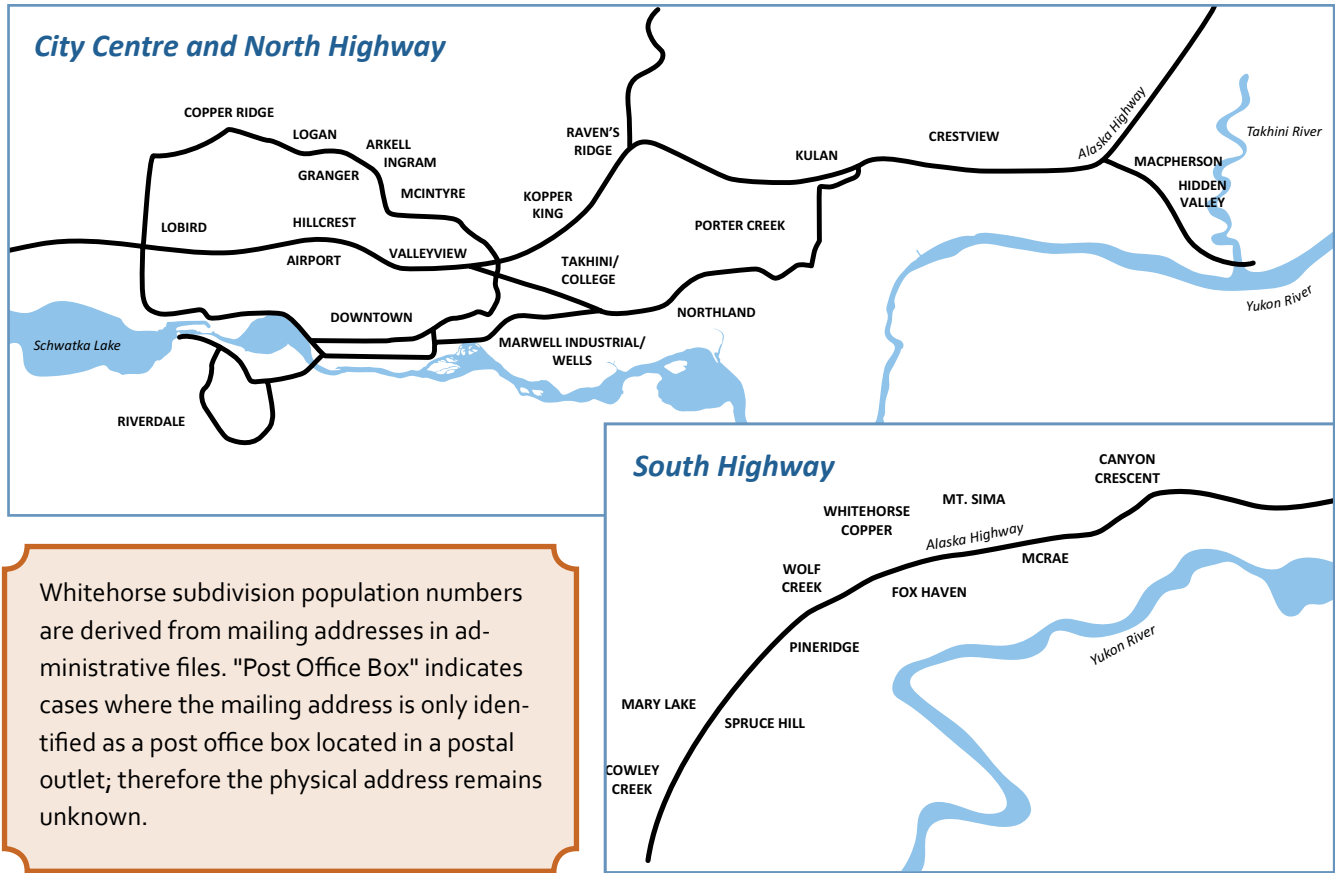
Community Populations by Age Groups, Dec 2012

| | Age Groups | | | | | | | | | | | | | | | | All Ages ¹ |
|--------------------|------------|-------|-------|-------|-------|-------|-------|-------|-------|-------|-------|-------|-------|-------|-------|-------|-----------------------|
| | 0-4 | 5-9 | 10-14 | 15-19 | 20-24 | 25-29 | 30-34 | 35-39 | 40-44 | 45-49 | 50-54 | 55-59 | 60-64 | 65-69 | 70-74 | 75+ | |
| Beaver Creek | 9 | 3 | 2 | 7 | 7 | 12 | 13 | 3 | 7 | 8 | 12 | 7 | 12 | 3 | 2 | 8 | 114 |
| Burwash Landing | 5 | 5 | 3 | 5 | 6 | 1 | 5 | 11 | 8 | 7 | 6 | 10 | 4 | 9 | 6 | 4 | 96 |
| Carcross | 24 | 21 | 21 | 22 | 24 | 29 | 31 | 26 | 29 | 45 | 39 | 41 | 29 | 33 | 11 | 15 | 440 |
| Carmacks | 44 | 31 | 34 | 40 | 34 | 31 | 39 | 36 | 35 | 27 | 50 | 36 | 31 | 19 | 11 | 15 | 513 |
| Dawson City | 93 | 98 | 86 | 80 | 125 | 169 | 170 | 148 | 152 | 170 | 198 | 190 | 143 | 90 | 45 | 42 | 2,000 |
| Destruction Bay | 1 | 1 | 0 | 1 | 2 | 4 | 6 | 0 | 5 | 3 | 9 | 3 | 8 | 4 | 3 | 1 | 52 |
| Faro | 22 | 19 | 15 | 20 | 18 | 14 | 25 | 31 | 7 | 26 | 51 | 47 | 27 | 22 | 22 | 20 | 384 |
| Haines Junction | 44 | 45 | 36 | 39 | 52 | 41 | 53 | 60 | 61 | 70 | 81 | 87 | 66 | 48 | 22 | 37 | 843 |
| Marsh Lake | 24 | 16 | 19 | 20 | 29 | 33 | 27 | 29 | 25 | 31 | 77 | 68 | 50 | 36 | 18 | 20 | 522 |
| Mayo | 24 | 19 | 18 | 32 | 26 | 35 | 37 | 15 | 34 | 40 | 51 | 48 | 26 | 15 | 18 | 31 | 468 |
| Old Crow | 17 | 8 | 14 | 22 | 21 | 15 | 18 | 19 | 11 | 16 | 19 | 16 | 21 | 9 | 3 | 10 | 241 |
| Pelly Crossing | 24 | 14 | 16 | 17 | 31 | 32 | 17 | 24 | 22 | 30 | 29 | 30 | 10 | 19 | 6 | 12 | 332 |
| Ross River | 21 | 14 | 18 | 25 | 30 | 25 | 28 | 17 | 36 | 37 | 32 | 27 | 18 | 15 | 7 | 12 | 364 |
| Tagish | 6 | 5 | 7 | 17 | 7 | 14 | 8 | 11 | 7 | 20 | 33 | 27 | 24 | 29 | 17 | 19 | 250 |
| Teslin | 23 | 22 | 17 | 29 | 23 | 26 | 28 | 36 | 34 | 30 | 42 | 36 | 34 | 28 | 10 | 26 | 446 |
| Watson Lake | 87 | 64 | 73 | 98 | 105 | 115 | 88 | 70 | 97 | 141 | 142 | 133 | 94 | 111 | 44 | 51 | 1,512 |
| Whitehorse | 1,587 | 1,516 | 1,463 | 1,587 | 2,008 | 2,336 | 2,116 | 2,078 | 2,046 | 2,173 | 2,428 | 2,187 | 1,730 | 1,121 | 594 | 782 | 27,753 |
| Other ² | 2 | 0 | 0 | 2 | 4 | 4 | 2 | 3 | 1 | 9 | 12 | 11 | 13 | 4 | 2 | 2 | 71 |
| Yukon | 2,058 | 1,902 | 1,842 | 2,064 | 2,552 | 2,935 | 2,712 | 2,617 | 2,616 | 2,883 | 3,310 | 3,004 | 2,341 | 1,618 | 841 | 1,107 | 36,402 |

¹ Due to the use of regression modelling, the sums of rows and/or columns may not equal totals given.

² Other includes communities such as Champagne, Elsa, Johnson's Crossing, Keno City, Stewart Crossing & Swift River.

Whitehorse Area Subdivision Populations



Whitehorse subdivision population numbers are derived from mailing addresses in administrative files. "Post Office Box" indicates cases where the mailing address is only identified as a post office box located in a postal outlet; therefore the physical address remains unknown.

| Subdivision | Dec '12 | Sept '12 | Dec '11' |
|------------------------------|---------|----------|----------|
| Copper Ridge | 3,508 | 3,513 | 3,355 |
| Cowley Creek | 236 | 251 | 240 |
| Crestview | 759 | 748 | 719 |
| Downtown (including Marwell) | 3,354 | 3,290 | 3,225 |
| Post Office Box | 277 | 281 | 485 |
| Granger | 1,085 | 1,066 | 1,036 |
| Hidden Valley/MacPherson | 396 | 404 | 410 |
| Hillcrest/Airport | 616 | 628 | 616 |
| Ingram/Arkel | 619 | 579 | 482 |
| Kopper King/Raven's Ridge | 242 | 258 | 263 |
| Lobird/Hamilton Blvd South | 186 | 196 | 204 |
| Logan | 361 | 362 | 361 |
| McIntyre | 538 | 530 | 516 |
| Mary Lake/Spruce Hill | 427 | 417 | 422 |
| Pine Ridge/Fox Haven | 296 | 300 | 285 |
| Porter Creek/Kulan | 3,803 | 3,773 | 3,715 |

| Subdivision | Dec '12 | Sept '12 | Dec '11' |
|--|---------------|---------------|---------------|
| Riverdale | 4,885 | 4,903 | 4,935 |
| Northlands Area (east of Mtn View Dr) | 1,164 | 1,185 | 1,097 |
| Takhini/College | 1,295 | 1,284 | 1,163 |
| Valleyview | 180 | 178 | 168 |
| Whitehorse Copper/McCrae/Mt. Sima/Canyon Cresc. | 407 | 400 | 371 |
| Wolf Creek | 348 | 354 | 348 |
| Inconsistent Information ¹ | 234 | 239 | 242 |
| Not in Defined Neighbourhood | 616 | 617 | 623 |
| Whitehorse-Municipal Boundaries² | 25,832 | 25,756 | 25,281 |
| Outside City Limits-North ³ | 1,025 | 1,002 | 890 |
| Outside City Limits-South ⁴ | 609 | 629 | 535 |
| Outside City Limits-West ⁵ | 285 | 286 | 251 |
| Outside City Limits-Other | 4 | 4 | 5 |
| Whitehorse Area Total² | 27,753 | 27,678 | 26,961 |

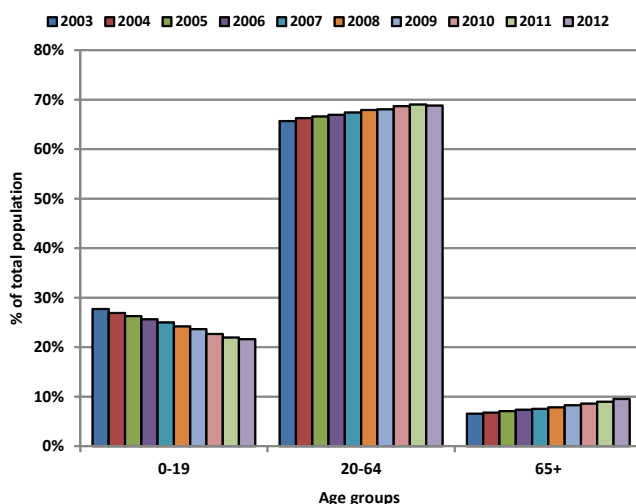
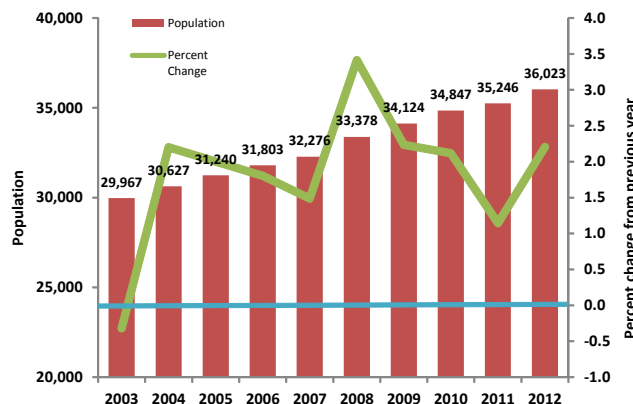
Note: Assignments of numbers of residents to Whitehorse subareas are based on addresses recorded on health care files, some of which are inconsistent or incomplete. Caution should be taken when comparing populations from one time period to another, as changes in totals may be a reflection of the updating or reassigning of recorded addresses rather than physical migrations.

¹ *Inconsistent Information* includes residents whose self-identified city of residence is Whitehorse but whose addresses recorded in the administrative files show inconsistencies; therefore there is a possibility that these residents may in fact reside outside the Whitehorse area.
² Due to the use of regression modelling, columns may not equal totals given.
³ *Outside City Limits-North* includes those residents living between Takhini River Bridge up to and including Fox Lake.
⁴ *Outside City Limits-South* includes those residents living between Carcross Cut-off up to and including Annie Lake Road.
⁵ *Outside City Limits-West* includes those residents living approximately 3km west of the Mayo Road Cut-off up to and including Mendenhall.

Historical Population Estimates

Growth of Annual Average Yukon Population, 2003 to 2012

In the past 10 years, Yukon's population increased by 6,056 people from a population of 29,967 in 2003 to 36,023 in 2012. This represents an average annual growth rate of 1.8%. However, this growth has not occurred evenly from year to year. It has ranged from a growth of 3.4% between 2007 and 2008 to a decline of 0.3% between 2002 and 2003.



Over the past 10 years, broad age groups (as a percentage of Yukon's total population), have shown that:

- 0-19 age group has decreased from a 27.7% share of the total population in 2003 to 21.6% in 2012: a decrease of 6.1 percentage points.
- 65+ age group has increased from 6.6% of the total population in 2003 to 9.5% in 2012: an increase of 2.9 percentage points.

Notes

Prior to 2012, the Yukon Bureau of Statistics produced population estimates twice a year. Effective 2012, estimates are produced quarterly.

Official population estimates for months and years prior to June 2010 were based on raw counts of Yukon Health Care Insurance Plan recipients, adjusted using the results of a semi-annual health care update survey that estimated the number of recipients who were no longer Yukon residents. Population estimates are now based on a model that combines raw counts of Yukon Health Care Insurance Plan recipients, health insurance claims, and motor vehicle registrations. The model is calibrated through a regression procedure that was conducted on official Yukon population estimates between January 2007 and June 2010.

Figures are sorted by postal codes and community codes. Users of this information should be aware that community population estimates include not only the legally defined municipal limits, but also the population that lives in the immediately surrounding area.

It should also be noted that population estimates do not include approximately 200 RCMP and military personnel living in Yukon who do not subscribe to the Yukon Health Care Insurance Plan.

Information sheet no. 58.43 - May 2013
Next Release: August 2013

Additional information:

Government of Yukon
Executive Council Office
Bureau of Statistics (A-8C)
Box 2703, Whitehorse, Yukon Y1A 2C6
Telephone: (867) 667-5640; Fax: (867) 393-6203
email: ybsinfo@gov.yk.ca
website: www.eco.gov.yk.ca/stats/