

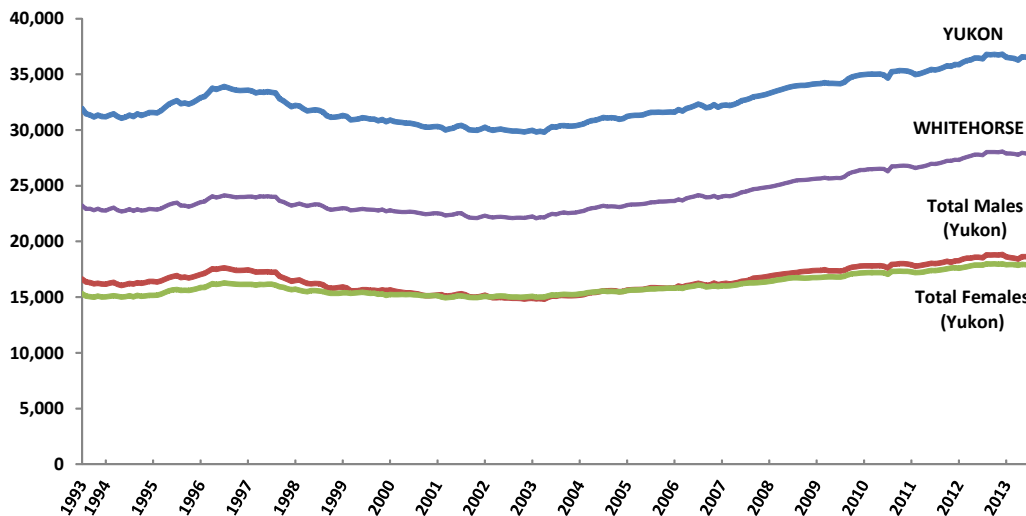
## Population Report December 2013

### Highlights:

- The estimated population of Yukon in December 2013 was 36,483; an increase of 81, or 0.2%, compared to December 2012 (36,402).
- Comparing December 2013 to December 2003, Yukon's estimated population increased by 6,228, or 20.6%. The population of Whitehorse increased by 5,400, or 24.1%; Dawson City increased by 210, or 11.7%; and Watson Lake decreased by 95, or 6.1%.

### Monthly Population Estimates

Population, December 1993 - December 2013



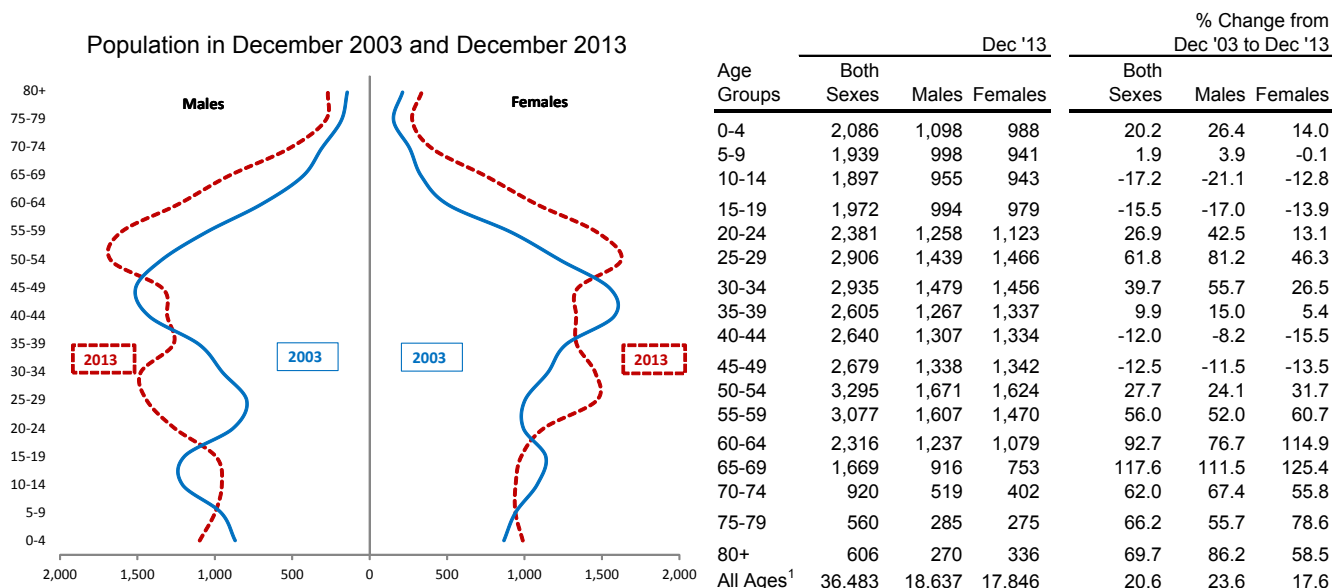
All figures in this publication were calculated by Yukon Bureau of Statistics based on data obtained from several Yukon government administrative records.  
*Please see back page for more information.*

- Yukon's population declined steadily between 1997 and 2001, and then fluctuated around 30,000 between 2001 and 2003.
- Since 2004, the population has been increasing at a steady pace. Successive new record highs<sup>1</sup> within most quarters have been set since the second half of 2008, the most recent being May 2013 at 36,816.
- The December 2013 population increased by 81 people, or 0.2%, compared to December 2012.

	2003	2004	2005	2006	2007	2008	2009	2010	2011	2012	2013
Jan	29,912	30,387	31,084	31,585	32,212	32,831	33,969	34,286	35,251	35,474	36,796
Feb	29,906	30,403	31,113	31,612	31,994	32,992	34,013	34,610	35,278	35,610	36,765
Mar	29,880	30,361	31,074	31,594	32,044	33,034	34,016	34,789	35,338	35,769	36,794
Apr	29,834	30,359	30,960	31,603	32,278	33,111	34,055	34,862	35,328	35,730	36,744
May	29,913	30,395	31,036	31,630	32,049	33,181	34,132	34,950	35,287	35,891	36,816
Jun	29,976	30,469	31,222	31,608	32,212	33,294	34,157	34,984	35,175	35,862	36,526
Jul	29,834	30,553	31,296	31,832	32,253	33,421	34,175	35,022	34,974	36,079	36,474
Aug	29,893	30,740	31,324	31,704	32,196	33,537	34,264	35,011	35,044	36,229	36,427
Sep	29,810	30,848	31,334	31,931	32,299	33,627	34,192	35,012	35,156	36,304	36,289
Oct	30,087	30,888	31,361	32,039	32,423	33,738	34,188	35,023	35,293	36,459	36,580
Nov	30,302	30,994	31,485	32,165	32,639	33,839	34,170	34,949	35,440	36,461	36,551
Dec	30,255	31,127	31,587	32,335	32,714	33,928	34,157	34,667	35,393	36,402	36,483
<b>ANNUAL AVERAGE</b>	<b>29,967</b>	<b>30,627</b>	<b>31,240</b>	<b>31,803</b>	<b>32,276</b>	<b>33,378</b>	<b>34,124</b>	<b>34,847</b>	<b>35,246</b>	<b>36,023</b>	<b>36,604</b>

<sup>1</sup> Accurate population estimates during the Gold Rush are not available. However, the first Census population estimate for Yukon was 27,219 in 1901.

## Population by Age Group and Sex, Yukon, Dec 2003 and Dec 2013



Yukon's population has grown and aged since 2003 – particularly as the baby-boom (current age 48-67) and echo-boom populations (current age 21-41) have aged.

December 2013 figures show:

- 16.2% of Yukon's population was under 15 years of age, 73.5% was between 15 and 64 years, and 10.3% was 65 years of age or older. In December 2003, 19.6% of Yukon's population was under 15 years of age, 73.7% was between 15 and 64 years, and 6.7% was 65 years and over.
- Yukon's population consisted of 18,637 males (51.1%) and 17,846 females (48.9%). In December 2003, there was slightly less of a gender gap: males comprised 49.8% of Yukon's population; females 50.2%.

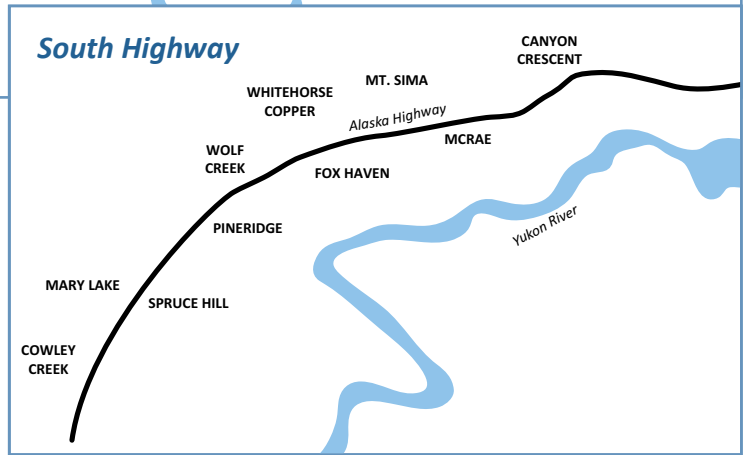
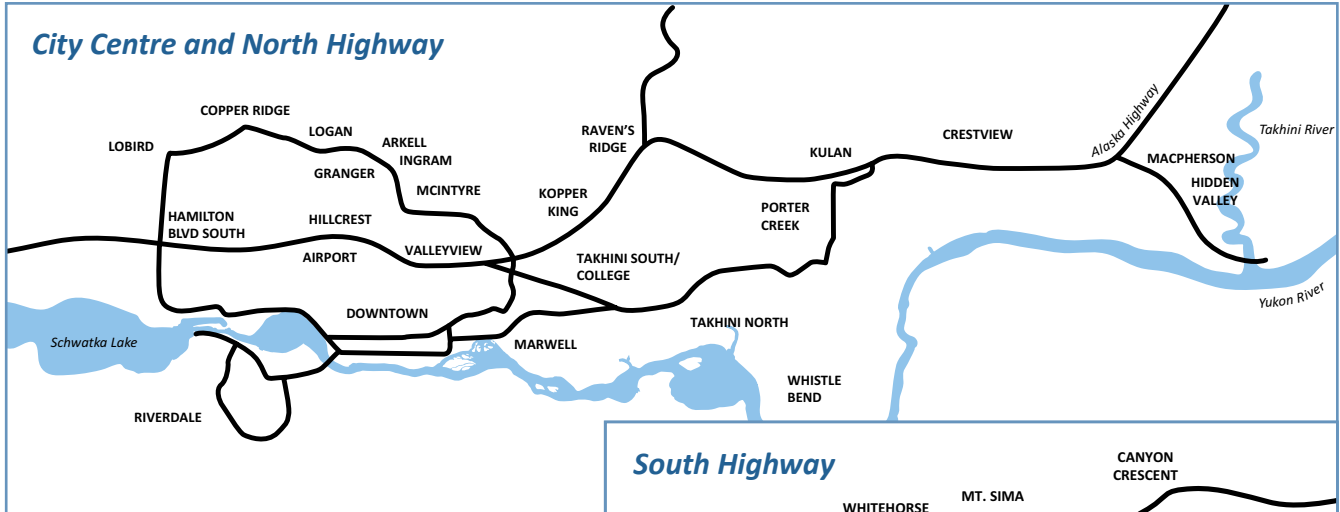
## Population by Community and Age Group, December 2013

	Age Group																	All Ages <sup>1</sup>
	0-4	5-9	10-14	15-19	20-24	25-29	30-34	35-39	40-44	45-49	50-54	55-59	60-64	65-69	70-74	75-79	80+	
Beaver Creek	11	5	4	3	11	11	13	4	7	10	11	2	11	5	3	1	5	114
Burwash Landing	6	6	4	5	4	3	5	13	7	8	7	10	7	7	6	6	1	104
Carcross	20	18	24	19	22	25	32	31	31	40	41	41	36	28	11	8	10	436
Carmacks	41	36	36	38	38	30	41	40	36	28	47	39	27	17	11	9	8	521
Dawson City	100	104	97	58	126	160	179	163	139	153	186	193	142	98	55	26	20	1,998
Destruction Bay	1	2	0	0	2	2	4	1	5	4	6	5	4	6	2	1	0	44
Faro	17	21	13	17	21	11	26	29	12	19	46	51	31	28	19	15	7	381
Haines Junction	43	46	41	38	45	43	56	57	57	68	80	91	63	48	27	17	21	840
Marsh Lake	28	16	21	17	23	31	41	29	27	28	65	68	53	35	22	14	10	525
Mayo	35	22	18	31	23	39	41	22	29	40	47	54	28	19	15	12	16	490
Old Crow	14	14	13	23	18	17	20	15	13	15	26	18	20	10	6	3	6	251
Pelly Crossing	33	18	19	16	29	36	28	22	25	30	32	24	15	18	7	7	8	366
Ross River	24	14	20	22	31	26	31	19	34	33	35	26	21	11	10	4	6	366
Tagish	4	8	6	13	6	13	9	10	7	17	31	26	27	31	17	9	10	243
Teslin	26	22	19	24	23	22	25	32	37	39	37	45	39	26	12	11	15	454
Watson Lake	74	72	66	83	105	104	91	69	91	127	136	132	98	101	48	23	35	1,456
Whitehorse	1,607	1,516	1,498	1,564	1,847	2,328	2,294	2,045	2,084	2,018	2,450	2,239	1,687	1,178	649	394	426	27,825
Other <sup>2</sup>	3	0	0	1	7	4	1	3	1	4	12	14	9	6	1	3	1	69
Yukon <sup>1</sup>	2,086	1,939	1,897	1,972	2,381	2,906	2,935	2,605	2,640	2,679	3,295	3,077	2,316	1,669	920	560	606	36,483

<sup>1</sup> Due to rounding, the sums of rows and/or columns may not equal totals given.

<sup>2</sup> Other includes communities such as Champagne, Elsa, Johnson's Crossing, Keno City, Stewart Crossing & Swift River.

# Population by Whitehorse Area Subdivisions



**Note:** Assignments of numbers of residents to Whitehorse subdivisions are based on mailing addresses recorded on health care administrative files, as well as addresses on motor vehicles records that were matched with health care files. Some of these records are inconsistent or incomplete. Changes in subdivision populations from one time period to another are not only due to natural population change and migrations, but may also be due to reassignments of previously inaccurate addresses on file.

Subdivision	Dec '12	Sep '13	Dec '13	Subdivision	Dec '12	Sep '13	Dec '13
Copper Ridge	3,513	3,514	3,493	Takhini North	1,131	1,137	1,155
Cowley Creek	232	229	243	Takhini South/College	1,297	1,378	1,370
Crestview	772	759	759	Valleyview	174	178	174
Downtown (including Marwell)	3,352	3,335	3,353	Whse Copper/McCrae/ Mt. Sima/Canyon Cresc.	402	428	421
Granger	1,081	1,025	1,028	Whistle Bend	6	9	12
Hidden Valley/MacPherson	407	424	419	Wolf Creek	356	370	372
Hillcrest/Airport	615	628	654	<i>Within Whitehorse City Limits, Not in Defined Neighbourhood</i>	547	561	528
Ingram/Arkell	624	740	790	<i>Post Office Box</i> <sup>1</sup>	328	407	619
Kopper King/Raven's Ridge	246	261	258	<i>Inconsistent Information</i> <sup>2</sup>	421	403	359
Lobird/Hamilton Blvd South	190	196	187	<b>Whitehorse-Municipal Boundaries</b> <sup>3</sup>	<b>26,084</b>	<b>26,151</b>	<b>26,298</b>
Logan	357	363	359	Outside City Limits-North <sup>4</sup>	964	956	873
McIntyre	531	526	527	Outside City Limits-South <sup>5</sup>	470	450	433
Mary Lake/Spruce Hill	414	417	418	Outside City Limits-West <sup>6</sup>	236	216	220
Pine Ridge/Fox Haven	297	312	315	<b>Whitehorse Area Total</b> <sup>3</sup>	<b>27,753</b>	<b>27,773</b>	<b>27,825</b>
Porter Creek/Kulan	3,798	3,752	3,705				
Riverdale	4,993	4,801	4,777				

<sup>1</sup> *Post Office Box* indicates cases where the mailing address is only identified as a post office box located in a Whitehorse postal outlet; therefore the precise physical address remains unknown.

<sup>2</sup> *Inconsistent Information* includes residents whose self-identified city of residence is Whitehorse but whose addresses recorded in the administrative files show inconsistencies; therefore there is a possibility that some of these residents may in fact reside outside the Whitehorse area.

<sup>3</sup> Due to rounding, columns may not equal totals given.

<sup>4</sup> *Outside City Limits-North* includes those residents living from Takhini River Bridge up to and including Fox Lake.

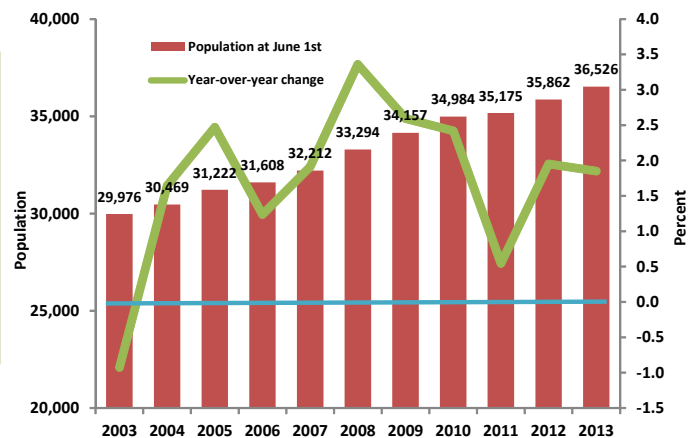
<sup>5</sup> *Outside City Limits-South* includes those residents living from Carcross Cut-off up to and including Annie Lake Road.

<sup>6</sup> *Outside City Limits-West* includes those residents living from the Mayo Road Cut-off up to and including Mendenhall.

## Annual (June) Population Estimates and Growth

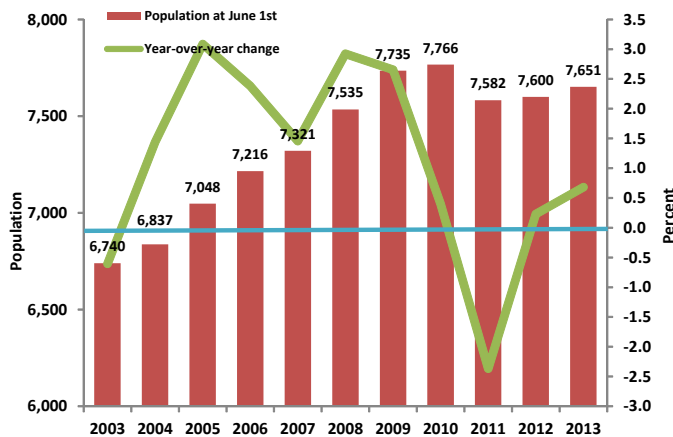
Yukon's annual (June) population increased by 6,550, from 29,976 in June 2003 to 36,526 in June 2013. This represents a compound annual growth rate of 2.2%. However, this growth has not occurred evenly from year to year. It ranges from a growth of 3.4% between 2007 and 2008 to a decline of 0.9% between 2002 and 2003.

Yukon, 2003 to 2013 (June of each year)



## Annual (June) First Nations Population Estimates and Growth

Yukon First Nations Population, 2003 to 2013 (June of each year)



In June 2013, the First Nations population (self-reported) in Yukon was estimated at 7,651. Of this total, 4,179 (54.6%) resided in Whitehorse, while 3,473 (45.4%) resided in rural communities. First Nations represented 20.9% of the total Yukon population.

The self-reported First Nations population increased by 911, from 6,740 in June 2003 to 7,651 in June 2013. This represents a compound annual growth rate of 1.4%; ranging from a 3.1% increase between 2004 and 2005 to a decrease of 2.4% between 2010 and 2011.

## Notes

Prior to 2012, the Yukon Bureau of Statistics produced population estimates twice a year. Effective 2012, estimates are produced quarterly.

Official population estimates for months and years prior to June 2010 were based on raw counts by mailing address of Yukon Health Care Insurance Plan recipients, adjusted using the results of a semi-annual health care update survey that estimated the number of recipients who were no longer Yukon residents. Population estimates are now based on a model that combines raw counts by mailing address of Yukon Health Care Insurance Plan recipients, health insurance claims and motor vehicle registrations. The model is calibrated through Statistics Canada's Census of Population ratio applications. The most recent adjusted Census of Population data applied is from 2011.

Figures are sorted by postal codes and community codes. Users of this information should be aware that community population estimates include not only the legally defined municipal limits, but also the population that lives in the immediately surrounding area.

Information sheet no. 58.47 - July 2014  
Next Release: Sept 2014

### Additional information:

Government of Yukon  
Executive Council Office  
Bureau of Statistics (A-8C)  
Box 2703, Whitehorse, Yukon Y1A 2C6  
Telephone: (867) 667-5640; Fax: (867) 393-6203  
email: [ybsinfo@gov.yk.ca](mailto:ybsinfo@gov.yk.ca)  
website: [www.eco.gov.yk.ca/stats/](http://www.eco.gov.yk.ca/stats/)