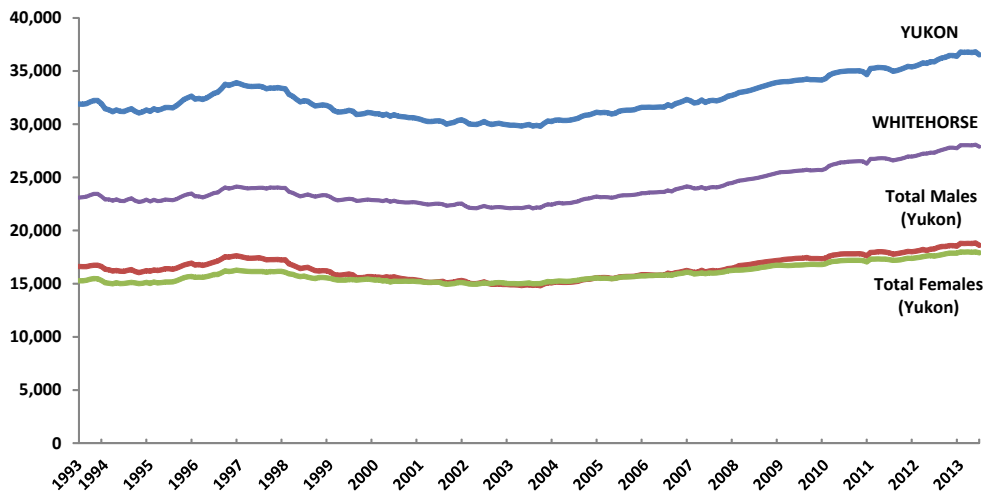


Highlights:

- The estimated population of Yukon in June 2013 was 36,526; an increase of 664, or 1.9%, compared to June 2012 (35,862).
- Comparing June 2003 to June 2013, Yukon's total population has increased by 6,550, or 21.8%. The population of Whitehorse has increased by 5,648, or 25.4%; Dawson City has increased by 222, or 12.6%; and Watson Lake has decreased by 71, or 4.6%.

Monthly Yukon Population Estimates

Yukon Population, June 1993 - June 2013



All figures in this publication were calculated by Yukon Bureau of Statistics based on data provided by Yukon government administrative records.

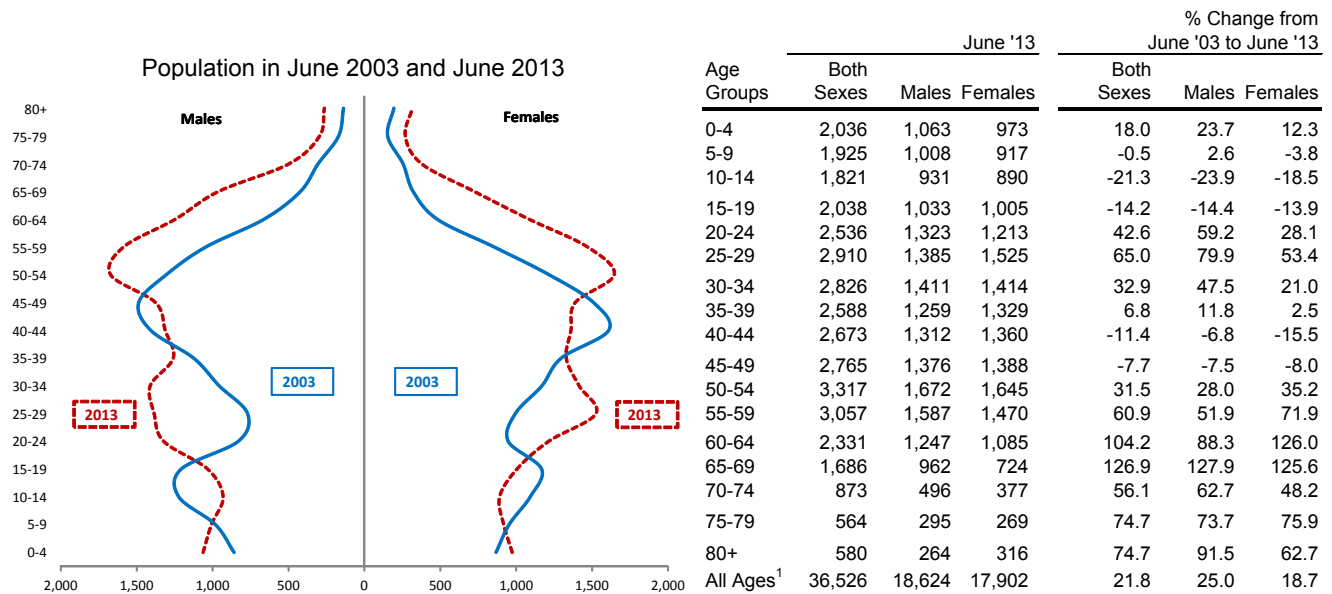
Population estimates for July 2010 and later are based on regression modelling. Thus, while estimates from July 2010 onward are still comparable to figures published in previous years, they have been derived using a different methodology.

- Yukon's population declined steadily between 1997 and 2001, and then fluctuated around 30,000 between 2001 and 2003.
- Since 2004, the population has been increasing at a steady pace. Successive new record highs¹ within most quarters have been set since the second half of 2008, the most recent being May 2013 at 36,816.
- The June 2013 population increased by 664 people, or 1.9%, compared to June 2012.

	2003	2004	2005	2006	2007	2008	2009	2010	2011	2012	2013
Jan	29,912	30,387	31,084	31,585	32,212	32,831	33,969	34,286	35,251	35,474	36,796
Feb	29,906	30,403	31,113	31,612	31,994	32,992	34,013	34,610	35,278	35,610	36,765
Mar	29,880	30,361	31,074	31,594	32,044	33,034	34,016	34,789	35,338	35,769	36,794
Apr	29,834	30,359	30,960	31,603	32,278	33,111	34,055	34,862	35,328	35,730	36,744
May	29,913	30,395	31,036	31,630	32,049	33,181	34,132	34,950	35,287	35,891	36,816
Jun	29,976	30,469	31,222	31,608	32,212	33,294	34,157	34,984	35,175	35,862	36,526
Jul	29,834	30,553	31,296	31,832	32,253	33,421	34,175	35,022	34,974	36,079	
Aug	29,893	30,740	31,324	31,704	32,196	33,537	34,264	35,011	35,044	36,229	
Sep	29,810	30,848	31,334	31,931	32,299	33,627	34,192	35,012	35,156	36,304	
Oct	30,087	30,888	31,361	32,039	32,423	33,738	34,188	35,023	35,293	36,459	
Nov	30,302	30,994	31,485	32,165	32,639	33,839	34,170	34,949	35,440	36,461	
Dec	30,255	31,127	31,587	32,335	32,714	33,928	34,157	34,667	35,393	36,402	
JAN-JUN AVERAGE	29,904	30,396	31,082	31,605	32,132	33,074	34,057	34,747	35,276	35,723	36,740

¹ Accurate population estimates during the Gold Rush are not available. However, the first Census population estimate for Yukon was 27,219 in 1901.

Yukon Population by Age Group and Sex, June 2003 to June 2013



Yukon's population has grown and aged since 2004 – particularly as the baby-boom (current age 48-67) and echo-boom populations (current age 21-41) have aged.

June 2013 figures show:

- 15.8% of Yukon's population was under 15 years of age, 74.0% was between 15 and 64 years, and 10.1% was 65 years of age or older. In June 2003, 19.9% of Yukon's population was under 15 years of age, 73.5% was between 15 and 64 years, and 6.5% was 65 years and over.
- Yukon's population consisted of 18,624 males (51.0%) and 17,902 females (49.0%). In June 2003, there was less of a gender gap: males comprised 49.7% of Yukon's population; females 50.3%.

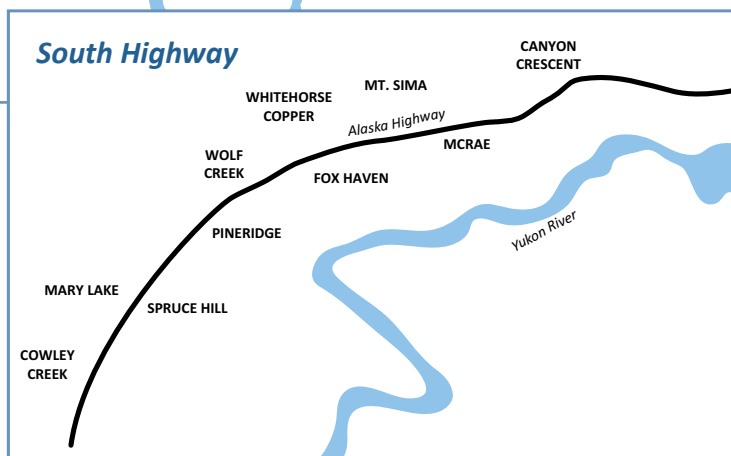
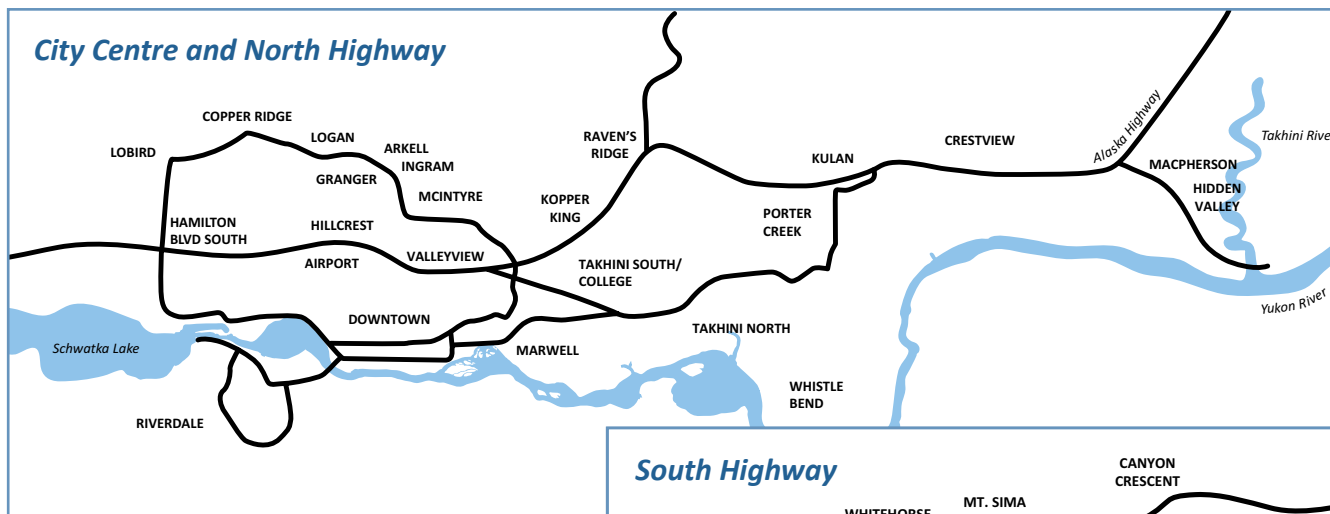
Community Populations by Age Group, June 2013

	Age Group																	All Ages ¹
	0-4	5-9	10-14	15-19	20-24	25-29	30-34	35-39	40-44	45-49	50-54	55-59	60-64	65-69	70-74	75-79	80+	
Beaver Creek	10	4	2	6	10	11	12	5	4	10	11	4	10	5	3	1	6	114
Burwash Landing	3	5	3	6	4	3	5	10	8	7	5	12	6	9	3	5	1	96
Carcross	16	18	25	19	24	26	33	28	29	43	39	40	33	29	13	6	9	429
Carmacks	47	33	32	38	39	29	37	36	35	25	47	36	30	21	8	9	8	510
Dawson City	90	100	82	68	136	169	171	150	149	160	198	185	138	92	57	27	17	1,987
Destruction Bay	1	1	0	1	0	3	3	1	5	3	6	5	6	5	2	1	0	44
Faro	19	19	16	19	19	13	26	31	8	24	53	51	29	26	21	12	7	392
Haines Junction	45	46	38	38	48	44	59	60	60	69	74	93	66	53	25	15	22	855
Marsh Lake	25	17	23	19	29	35	32	30	28	27	73	66	54	36	20	13	9	535
Mayo	26	23	21	28	22	38	42	18	34	38	46	56	27	15	17	14	16	483
Old Crow	18	12	13	22	21	15	20	18	10	17	25	17	19	8	5	3	6	250
Pelly Crossing	30	14	17	15	33	33	23	22	24	28	31	27	13	17	7	8	7	348
Ross River	25	14	19	27	23	28	31	17	34	37	31	23	19	14	9	4	7	363
Tagish	4	7	5	16	8	11	9	11	9	17	33	23	26	27	18	7	10	242
Teslin	28	20	15	24	23	23	30	33	33	36	36	42	39	29	11	10	15	448
Watson Lake	78	69	66	92	98	106	87	73	98	128	143	129	100	107	43	26	32	1,474
Whitehorse	1,569	1,521	1,444	1,599	1,994	2,318	2,206	2,043	2,105	2,090	2,455	2,234	1,708	1,186	610	400	408	27,889
Other ²	2	0	0	2	5	5	0	2	1	7	12	13	10	7	1	2	0	69
Yukon ¹	2,036	1,925	1,821	2,038	2,536	2,910	2,826	2,588	2,673	2,765	3,317	3,057	2,331	1,686	873	564	580	36,526

¹ Due to the use of regression modelling, the sums of rows and/or columns may not equal totals given.

² Other includes communities such as Champagne, Elsa, Johnson's Crossing, Keno City, Stewart Crossing & Swift River.

Whitehorse Area Subdivision Populations



Note: Assignments of numbers of residents to Whitehorse subdivisions are based on mailing addresses recorded on health care administrative files, as well as addresses on motor vehicles records that were matched with health care files. Some of these records are inconsistent or incomplete. Changes in subdivision populations from one time period to another are not only due to natural population change and migrations, but may also be due to reassignments of previously inaccurate addresses on file.

Subdivision	Jun '12 ^r	Mar '13	Jun '13	Subdivision	Jun '12 ^r	Mar '13	Jun '13
Copper Ridge	3,432	3,545	3,521	Takhini North	1,148	1,168	1,126
Cowley Creek	240	236	238	Takhini South/College	1,271	1,330	1,358
Crestview	756	772	761	Valleyview	170	174	179
Downtown (including Marwell)	3,257	3,389	3,364	Whse Copper/McCrae/ Mt. Sima/Canyon Cresc.	377	414	423
Granger	1,051	1,072	1,051	Whistle Bend	4	12	8
Hidden Valley/MacPherson	410	416	417	Wolf Creek	357	360	367
Hillcrest/Airport	630	618	614	<i>Within Whitehorse City Limits, Not in Defined Neighbourhood</i>	558	552	547
Ingram/Arkell	547	656	699	<i>Post Office Box</i> ¹	354	362	348
Kopper King/Raven's Ridge	249	255	265	<i>Inconsistent Information</i> ²	413	416	418
Lobird/Hamilton Blvd South	197	196	195	Whitehorse-Municipal Boundaries ³	25,679	26,344^r	26,210
Logan	357	359	362	Outside City Limits-North ⁴	937	988	982
McIntyre	531	550	539	Outside City Limits-South ⁵	469	477	469
Mary Lake/Spruce Hill	412	415	419	Outside City Limits-West ⁶	239	224	228
Pine Ridge/Fox Haven	295	302	297	Whitehorse Area Total ³	27,323	28,033	27,889
Porter Creek/Kulan	3,681	3,813	3,816				
Riverdale	4,980	4,960	4,877				

^r revised

¹ *Post Office Box* indicates cases where the mailing address is only identified as a post office box located in a Whitehorse postal outlet; therefore the precise physical address remains unknown.

² *Inconsistent Information* includes residents whose self-identified city of residence is Whitehorse but whose addresses recorded in the administrative files show inconsistencies; therefore there is a possibility that some of these residents may in fact reside outside the Whitehorse area.

³ Due to rounding, columns may not equal totals given.

⁴ *Outside City Limits-North* includes those residents living from Takhini River Bridge up to and including Fox Lake.

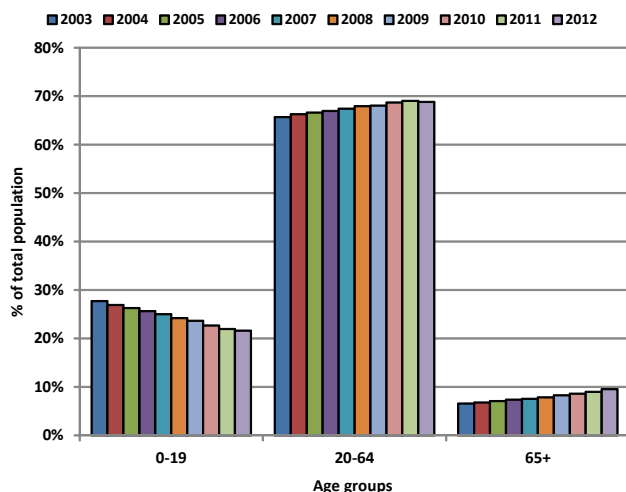
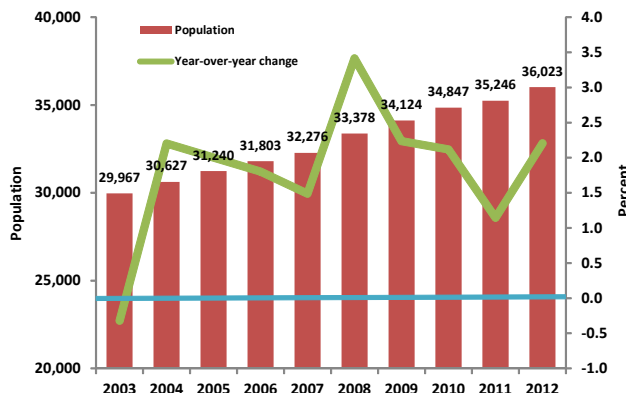
⁵ *Outside City Limits-South* includes those residents living from Carcross Cut-off up to and including Annie Lake Road.

⁶ *Outside City Limits-West* includes those residents living from the Mayo Road Cut-off up to and including Mendenhall.

Historical Population Estimates

Growth of Annual Average Yukon Population, 2003 to 2012

Yukon's population has increased by 6,056, from 29,967 in 2003 to 36,023 in 2012. This represents a compound annual growth rate of 2.1%. However, this growth has not occurred evenly from year to year. It has ranged from a growth of 3.4% between 2007 and 2008 to a decline of 0.3% between 2002 and 2003.



Broad age groups (as a percentage of Yukon's total population), have shown that:

- the 0-19 age group has decreased from a 27.7% share of the total population in 2003 to 21.6% in 2012: a decrease of 6.1 percentage points.
- the 65+ age group has increased from 6.6% of the total population in 2003 to 9.5% in 2012: an increase of 2.9 percentage points.

Notes

Prior to 2012, the Yukon Bureau of Statistics produced population estimates twice a year. Effective 2012, estimates are produced quarterly.

Official population estimates for months and years prior to June 2010 were based on raw counts of Yukon Health Care Insurance Plan recipients, adjusted using the results of a semi-annual health care update survey that estimated the number of recipients who were no longer Yukon residents. Population estimates are now based on a model that combines raw counts of Yukon Health Care Insurance Plan recipients, health insurance claims, and motor vehicle registrations. The model is calibrated through a regression procedure that was conducted on official Yukon population estimates between January 2007 and June 2010.

Figures are sorted by postal codes and community codes. Users of this information should be aware that community population estimates include not only the legally defined municipal limits, but also the population that lives in the immediately surrounding area.

Information sheet no. 58.45 - November 2013
Next Release: February 2014