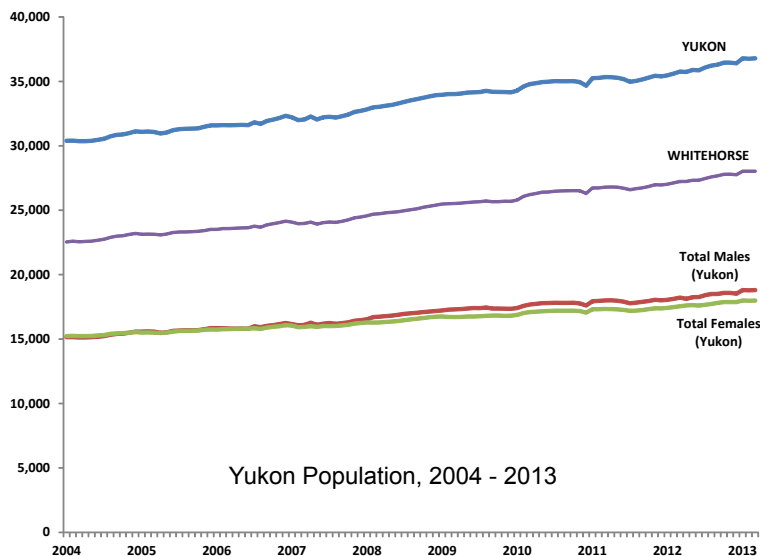


Highlights:

- The estimated population of Yukon in March 2013 was 36,794; an increase of 1,025, or 2.9%, compared to March 2012 (35,769).
- Comparing March 2004 to March 2013, Yukon's total population has increased by 6,433, or 21.2%. The population of Whitehorse has increased by 5,483, or 24.3%; Dawson City has increased by 225, or 12.6%; and Watson Lake has decreased by 64, or 4.1%.

Monthly Yukon Population Estimates



All figures in this publication were calculated by Yukon Bureau of Statistics based on data provided by Yukon Health and Social Services.

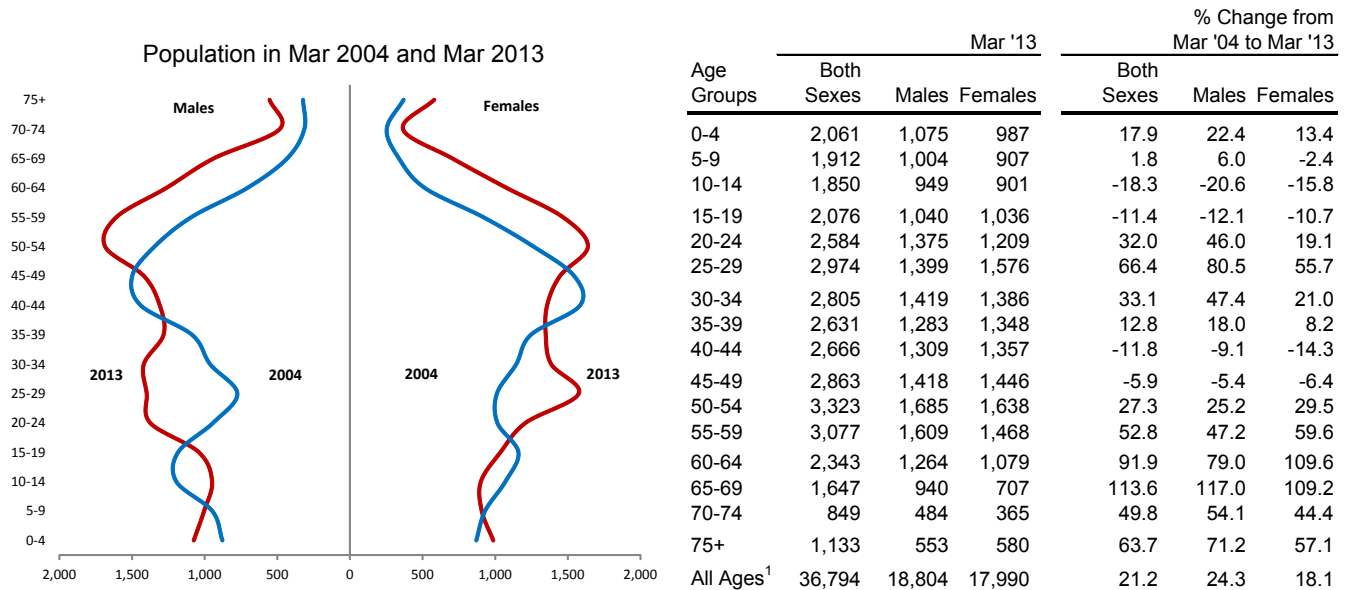
Population estimates for July 2010 and later are based on regression modelling. Thus, while estimates from July 2010 onward are still comparable to figures published in previous years, they have been derived using a different methodology.

- Yukon's population declined steadily between 1997 and 2001, and then fluctuated around 30,000 between 2001 and 2003.
- Since 2004, the population has been increasing at a steady pace. Successive new record highs¹ within most quarters have been set since the second half of 2008; the most recent being January 2013 at 36,796.
- The March 2013 population increased by 1,025 people, or 2.9%, compared to March 2012.

	2004	2005	2006	2007	2008	2009	2010	2011	2012	2013
Jan	30,387	31,084	31,585	32,212	32,831	33,969	34,286	35,251	35,474	36,796
Feb	30,403	31,113	31,612	31,994	32,992	34,013	34,610	35,278	35,610	36,765
Mar	30,361	31,074	31,594	32,044	33,034	34,016	34,789	35,338	35,769	36,794
Apr	30,359	30,960	31,603	32,278	33,111	34,055	34,862	35,328	35,730	
May	30,395	31,036	31,630	32,049	33,181	34,132	34,950	35,287	35,891	
Jun	30,469	31,222	31,608	32,212	33,294	34,157	34,984	35,175	35,862	
Jul	30,553	31,296	31,832	32,253	33,421	34,175	35,022	34,974	36,079	
Aug	30,740	31,324	31,704	32,196	33,537	34,264	35,011	35,044	36,229	
Sep	30,848	31,334	31,931	32,299	33,627	34,192	35,012	35,156	36,304	
Oct	30,888	31,361	32,039	32,423	33,738	34,188	35,023	35,293	36,459	
Nov	30,994	31,485	32,165	32,639	33,839	34,170	34,949	35,440	36,461	
Dec	31,127	31,587	32,335	32,714	33,928	34,157	34,667	35,393	36,402	
JAN-MAR AVERAGE	30,384	31,090	31,597	32,083	32,952	33,999	34,562	35,289	35,618	36,785

¹Accurate population estimates during the Gold Rush are not available. However, the first Census population estimate for Yukon was in 1901 - population 27,219.

Yukon Population by Age Groups and Sex, March 2004 to March 2013



Yukon's population has grown and aged since 2004 - particularly as the baby-boom (currently age 48-67) and echo-boom populations (currently age 21-41) have aged.

March 2013 figures show:

- 15.8% of Yukon's population was under 15 years of age, 74.3% was between 15 and 64 years of age or older. In March 2004, 19.4% of Yukon's population was under 15 years of age, 73.9% was between 15 and 64 years, and 6.7% was 65 years of age or older.
- Yukon's population consisted of 18,804 males (51.1%) and 17,990 females (48.9%). In March 2004, there was less of a gender gap: males comprised 49.8% of Yukon's population; females 50.2%.

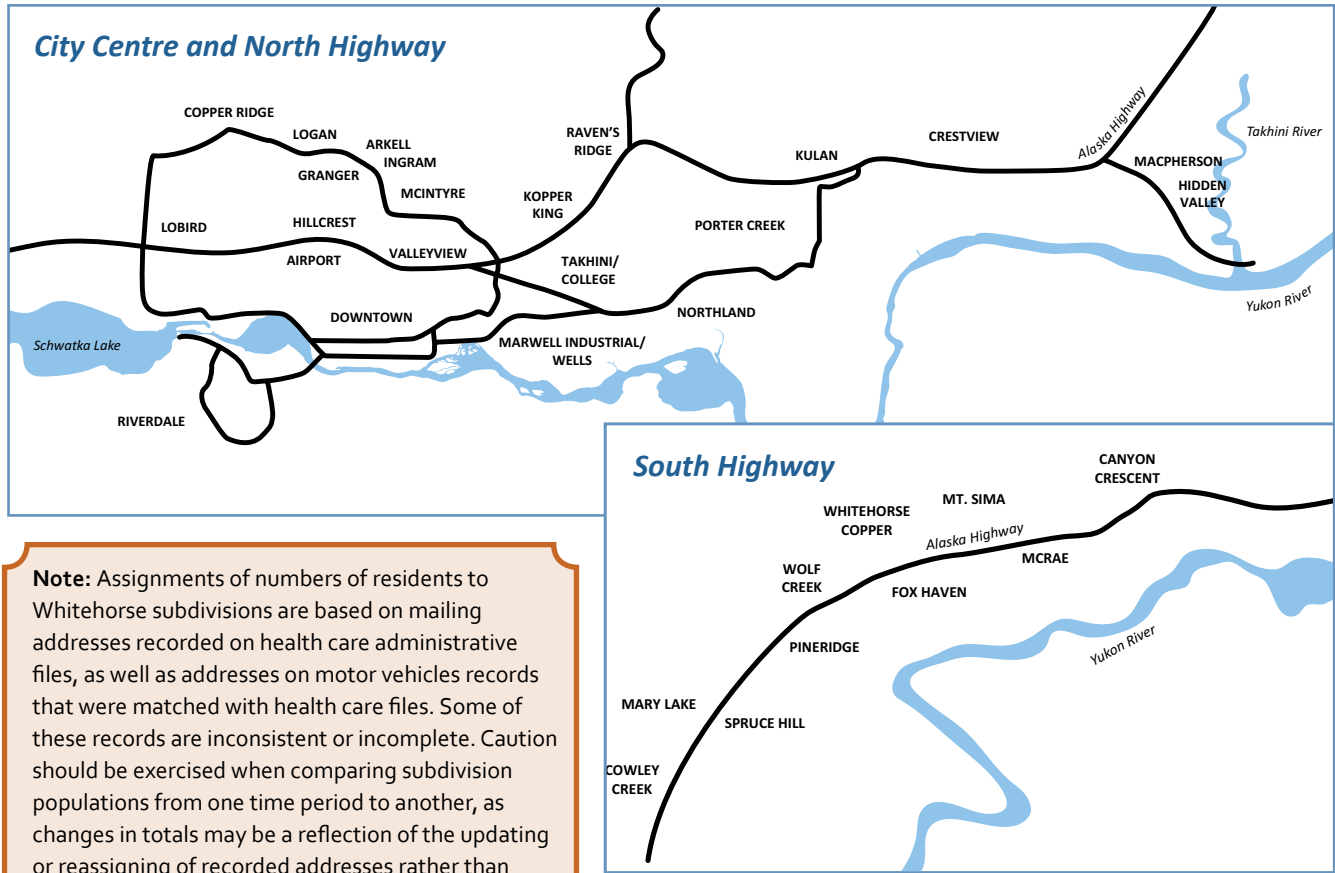
Community Populations by Age Groups, March 2013

	Age Groups																All Ages ¹
	0-4	5-9	10-14	15-19	20-24	25-29	30-34	35-39	40-44	45-49	50-54	55-59	60-64	65-69	70-74	75+	
Beaver Creek	10	4	3	7	9	12	13	4	8	8	11	5	11	3	3	8	118
Burwash Landing	5	5	3	5	5	2	5	12	8	7	5	13	6	10	5	5	99
Carcross	23	19	22	20	22	29	33	27	27	44	40	40	33	32	12	15	437
Carmacks	46	33	37	40	38	30	39	35	36	25	48	37	30	19	8	18	519
Dawson City	96	92	86	73	134	175	164	148	150	166	207	193	144	85	54	42	2,010
Destruction Bay	1	2	0	1	1	3	4	1	5	3	8	3	7	6	3	1	48
Faro	21	18	16	21	18	14	27	30	7	24	55	49	27	24	22	19	390
Haines Junction	45	46	41	43	52	43	57	62	60	72	70	95	67	50	24	36	864
Marsh Lake	24	16	24	21	30	36	30	30	27	30	75	68	54	37	18	21	540
Mayo	28	21	20	30	27	38	41	17	34	41	47	52	27	16	16	31	487
Old Crow	18	11	14	23	23	14	20	20	10	16	22	17	21	9	4	10	249
Pelly Crossing	26	15	17	16	34	33	22	21	24	31	29	30	9	19	7	14	348
Ross River	24	15	18	29	28	29	31	17	33	41	32	25	21	15	8	12	378
Tagish	6	6	6	15	8	13	11	11	8	20	32	27	24	27	19	17	249
Teslin	26	25	16	26	26	25	30	35	34	34	39	42	36	28	11	26	459
Watson Lake	83	65	71	94	105	113	84	69	99	140	138	129	99	110	40	56	1,495
Whitehorse	1,576	1,520	1,456	1,611	2,018	2,363	2,193	2,089	2,095	2,151	2,454	2,239	1,718	1,154	594	799	28,033
Other ²	2	0	0	2	6	4	1	2	1	10	13	12	11	5	1	2	72
Yukon¹	2,061	1,912	1,850	2,076	2,584	2,974	2,805	2,631	2,666	2,863	3,323	3,077	2,343	1,647	849	1,133	36,794

¹ Due to the use of regression modelling, the sums of rows and/or columns may not equal totals given.

² Other includes communities such as Champagne, Elsa, Johnson's Crossing, Keno City, Stewart Crossing & Swift River.

Whitehorse Area Subdivision Populations



Note: Assignments of numbers of residents to Whitehorse subdivisions are based on mailing addresses recorded on health care administrative files, as well as addresses on motor vehicles records that were matched with health care files. Some of these records are inconsistent or incomplete. Caution should be exercised when comparing subdivision populations from one time period to another, as changes in totals may be a reflection of the updating or reassigning of recorded addresses rather than actual migrations.

Subdivision	Mar '11 ^r	Mar '12 ^r	Dec '12 ^r	Mar '13	Subdivision	Mar '11 ^r	Mar '12 ^r	Dec '12 ^r	Mar '13
Copper Ridge	3,318	3,429	3,513	3,545	Takhini North	974	1,131	1,131	1,168
Cowley Creek	222	233	232	236	Takhini South/College	1,058	1,222	1,297	1,330
Crestview	748	741	772	772	Valleyview	161	164	174	174
Downtown (including Marwell)	3,244	3,287	3,352	3,389	Whse Copper/McCrae/Mt. Sima/Canyon Cresc.	324	358	402	414
Granger	1,030	1,043	1,081	1,072	Whistle Bend	5	6	6	12
Hidden Valley/MacPherson	418	414	407	416	Wolf Creek	360	356	356	360
Hillcrest/Airport	638	626	615	618	<i>Within Whitehorse City Limits, Not in Defined Neighbourhood</i>	556	565	547	552
Ingram/Arkell	473	508	624	656	<i>Post Office Box</i> ¹	593	387	328	362
Kopper King/Raven's Ridge	247	243	246	255	<i>Inconsistent Information</i> ²	392	413	421	416
Lobird/Hamilton Blvd South	181	199	190	196	Whitehorse-Municipal Boundaries ³	25,343	25,607	26,084	26,342
Logan	371	365	357	359	Outside City Limits-North ⁴	819	916	964	988
McIntyre	524	526	531	550	Outside City Limits-South ⁵	431	480	470	477
Mary Lake/Spruce Hill	441	424	414	415	Outside City Limits-West ⁶	203	232	236	224
Pine Ridge/Fox Haven	286	287	297	302	Whitehorse Area Total ³	26,792	27,237	27,753	28,033
Porter Creek/Kulan	3,701	3,688	3,798	3,813					
Riverdale	5,078	4,992	4,993	4,960					

^r revised

¹ *Post Office Box* indicates cases where the mailing address is only identified as a post office box located in a Whitehorse postal outlet; therefore the precise physical address remains unknown.

² *Inconsistent Information* includes residents whose self-identified city of residence is Whitehorse but whose addresses recorded in the administrative files show inconsistencies; therefore there is a possibility that some of these residents may in fact reside outside the Whitehorse area.

³ Due to the use of regression modelling, columns may not equal totals given.

⁴ *Outside City Limits-North* includes those residents living from Takhini River Bridge up to and including Fox Lake.

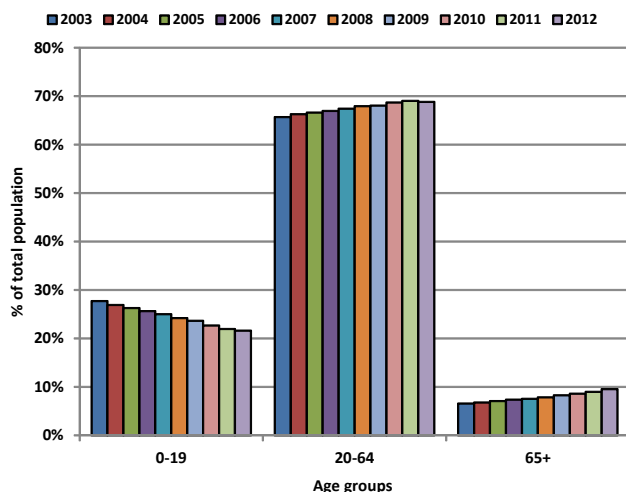
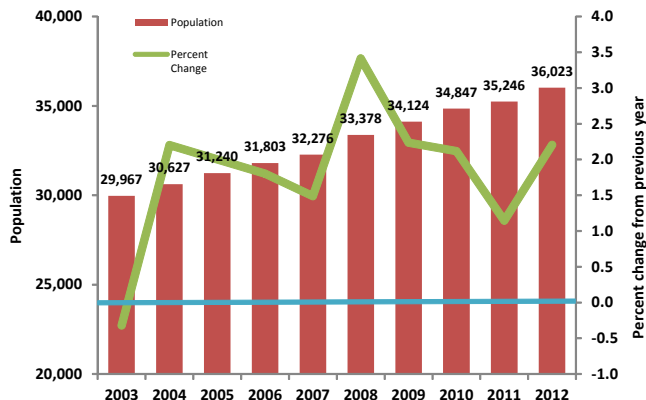
⁵ *Outside City Limits-South* includes those residents living from Carcross Cut-off up to and including Annie Lake Road.

⁶ *Outside City Limits-West* includes those residents living from the Mayo Road Cut-off up to and including Mendenhall.

Historical Population Estimates

Growth of Annual Average Yukon Population, 2003 to 2012

Yukon's population has increased by 6,056, from 29,967 in 2003 to 36,023 in 2012. This represents a compound annual growth rate of 2.1%. However, this growth has not occurred evenly from year to year. It has ranged from a growth of 3.4% between 2007 and 2008 to a decline of 0.3% between 2002 and 2003.



Broad age groups (as a percentage of Yukon's total population), have shown that:

- the 0-19 age group has decreased from a 27.7% share of the total population in 2003 to 21.6% in 2012: a decrease of 6.1 percentage points.
- the 65+ age group has increased from 6.6% of the total population in 2003 to 9.5% in 2012: an increase of 2.9 percentage points.

Notes

Prior to 2012, the Yukon Bureau of Statistics produced population estimates twice a year. Effective 2012, estimates are produced quarterly.

Official population estimates for months and years prior to June 2010 were based on raw counts of Yukon Health Care Insurance Plan recipients, adjusted using the results of a semi-annual health care update survey that estimated the number of recipients who were no longer Yukon residents. Population estimates are now based on a model that combines raw counts of Yukon Health Care Insurance Plan recipients, health insurance claims, and motor vehicle registrations. The model is calibrated through a regression procedure that was conducted on official Yukon population estimates between January 2007 and June 2010.

Figures are sorted by postal codes and community codes. Users of this information should be aware that community population estimates include not only the legally defined municipal limits, but also the population that lives in the immediately surrounding area.

It should also be noted that population estimates do not include approximately 200 RCMP and military personnel living in Yukon who do not subscribe to the Yukon Health Care Insurance Plan.

Information sheet no. 58.44 - October 2013

Next Release: December 2013

Additional information:

Government of Yukon

Executive Council Office

Bureau of Statistics (A-8C)

Box 2703, Whitehorse, Yukon Y1A 2C6

Telephone: (867) 667-5640; Fax: (867) 393-6203

email: ybsinfo@gov.yk.ca

website: www.eco.gov.yk.ca/stats/