

# YUKON BUREAU OF STATISTICS



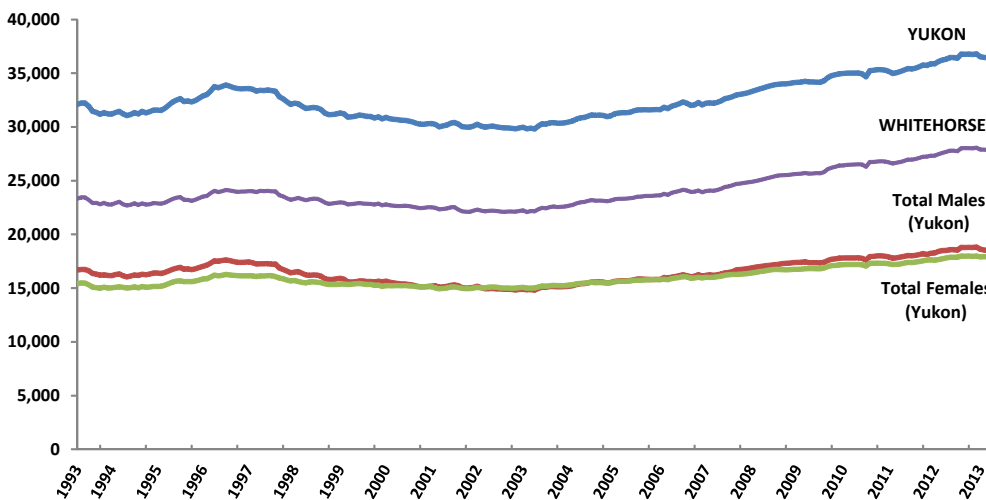
## Population Report September 2013

### Highlights:

- The estimated population of Yukon in September 2013 was 36,289; a decrease of 15, or 0.04%, compared to September 2012 (36,304).
- Comparing September 2003 to September 2013, Yukon's estimated population has increased by 6,479, or 21.7%. The population of Whitehorse has increased by 5,623, or 25.4%; Dawson City has increased by 231, or 13.2%; and Watson Lake has decreased by 65, or 4.3%.

### Monthly Population Estimates

Population, September 1993 - September 2013



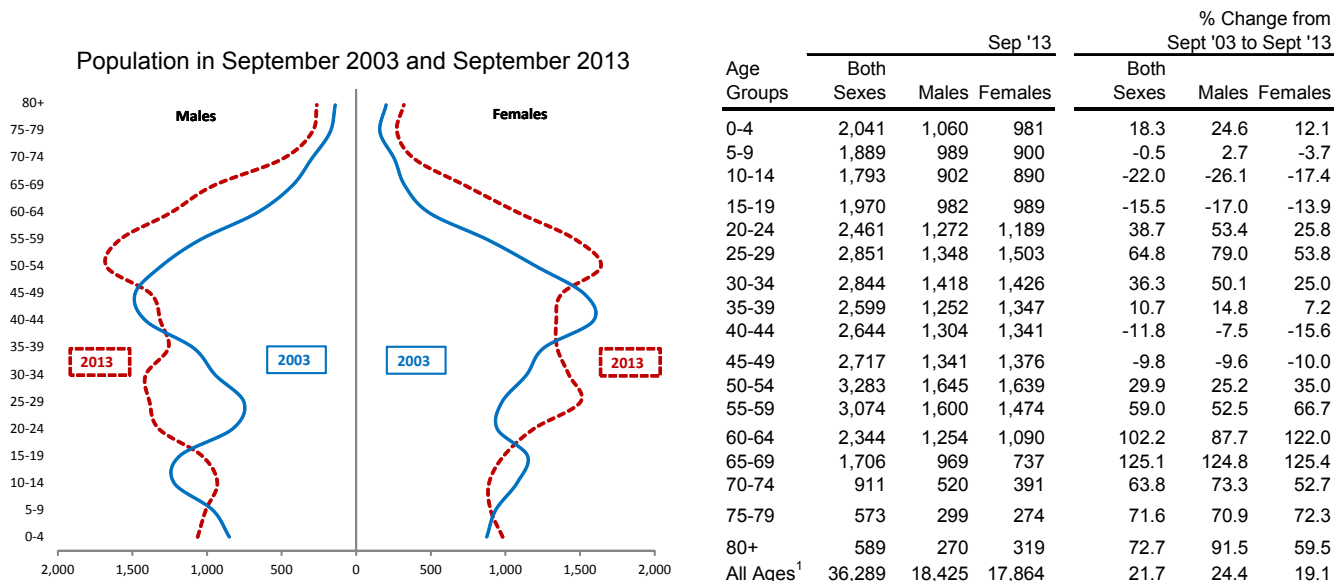
All figures in this publication were calculated by Yukon Bureau of Statistics based on data provided by Yukon government administrative records.

Population estimates for July 2010 and later are based on regression modelling. Thus, while estimates from July 2010 onward are still comparable to figures published in previous years, they have been derived using a different methodology.

	2003	2004	2005	2006	2007	2008	2009	2010	2011	2012	2013	
• Yukon's population declined steadily between 1997 and 2001, and then fluctuated around 30,000 between 2001 and 2003.	Jan	29,912	30,387	31,084	31,585	32,212	32,831	33,969	34,286	35,251	35,474	36,796
	Feb	29,906	30,403	31,113	31,612	31,994	32,992	34,013	34,610	35,278	35,610	36,765
	Mar	29,880	30,361	31,074	31,594	32,044	33,034	34,016	34,789	35,338	35,769	36,794
	Apr	29,834	30,359	30,960	31,603	32,278	33,111	34,055	34,862	35,328	35,730	36,744
• Since 2004, the population has been increasing at a steady pace. Successive new record highs <sup>1</sup> within most quarters have been set since the second half of 2008, the most recent being May 2013 at 36,816.	May	29,913	30,395	31,036	31,630	32,049	33,181	34,132	34,950	35,287	35,891	36,816
	Jun	29,976	30,469	31,222	31,608	32,212	33,294	34,157	34,984	35,175	35,862	36,526
	Jul	29,834	30,553	31,296	31,832	32,253	33,421	34,175	35,022	34,974	36,079	36,474
	Aug	29,893	30,740	31,324	31,704	32,196	33,537	34,264	35,011	35,044	36,229	36,427
	Sep	29,810	30,848	31,334	31,931	32,299	33,627	34,192	35,012	35,156	36,304	36,289
	Oct	30,087	30,888	31,361	32,039	32,423	33,738	34,188	35,023	35,293	36,459	
	Nov	30,302	30,994	31,485	32,165	32,639	33,839	34,170	34,949	35,440	36,461	
	Dec	30,255	31,127	31,587	32,335	32,714	33,928	34,157	34,667	35,393	36,402	
	JAN-SEP AVERAGE	29,884	30,502	31,160	31,678	32,171	33,225	34,108	34,836	35,203	35,883	36,626
• The September 2013 population decreased by 15 people, or 0.04%, compared to September 2012.												

<sup>1</sup>Accurate population estimates during the Gold Rush are not available. However, the first Census population estimate for Yukon was 27,219 in 1901.

## Population by Age Group and Sex, Yukon, Sept 2003 and Sept 2013



Yukon's population has grown and aged since 2003 – particularly as the baby-boom (current age 48-67) and echo-boom populations (current age 21-41) have aged.

September 2013 figures show:

- 15.8% of Yukon's population was under 15 years of age, 73.8% was between 15 and 64 years, and 10.4% was 65 years of age or older. In September 2003, 19.9% of Yukon's population was under 15 years of age, 73.5% was between 15 and 64 years, and 6.7% was 65 years and over.
- Yukon's population consisted of 18,425 males (50.8%) and 17,864 females (49.2%). In September 2003, there was slightly less of a gender gap: males comprised 49.7% of Yukon's population; females 50.3%.

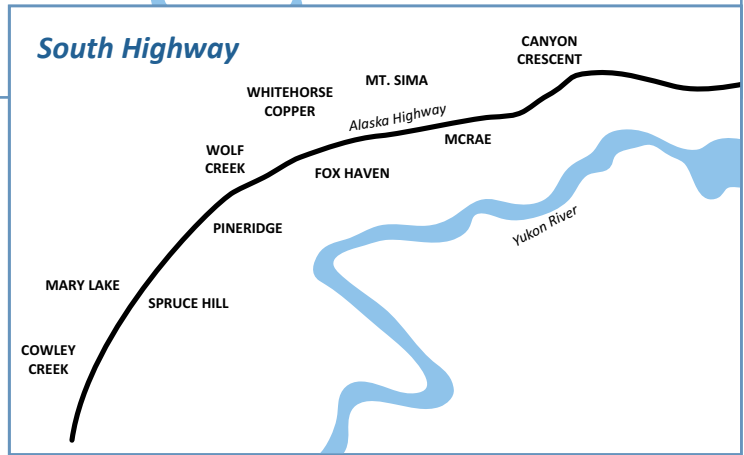
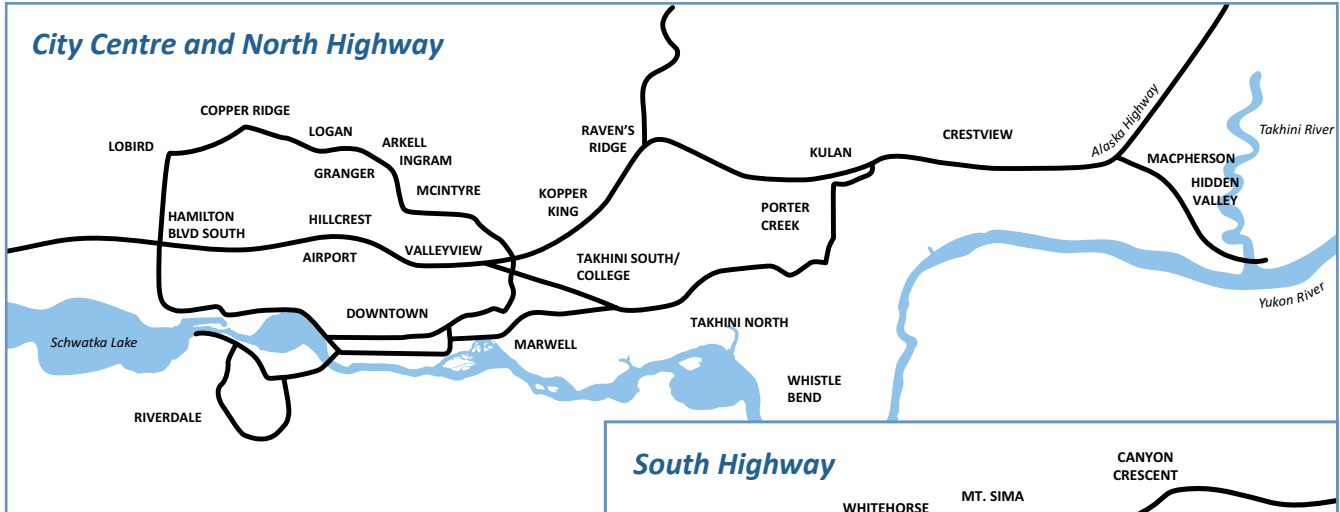
## Population by Community and Age Group, September 2013

	Age Group																	All Ages <sup>1</sup>
	0-4	5-9	10-14	15-19	20-24	25-29	30-34	35-39	40-44	45-49	50-54	55-59	60-64	65-69	70-74	75-79	80+	
Beaver Creek	9	4	3	4	11	8	13	6	6	10	11	3	11	4	3	1	6	113
Burwash Landing	4	6	3	5	3	3	5	10	9	7	5	12	4	10	4	5	1	96
Carcross	16	16	24	19	23	24	28	29	32	39	39	38	36	30	11	8	9	422
Carmacks	47	32	28	32	38	33	40	38	33	26	44	38	29	17	11	9	8	502
Dawson City	93	103	84	58	137	168	179	148	137	158	182	196	137	95	56	25	19	1,977
Destruction Bay	0	1	0	1	0	2	4	1	6	5	5	5	5	5	2	1	0	44
Faro	16	17	14	18	20	12	25	29	10	19	53	49	30	26	20	15	7	380
Haines Junction	39	40	33	35	45	43	56	58	57	69	74	94	66	49	28	18	20	825
Marsh Lake	26	19	22	18	28	32	40	26	27	27	69	72	54	37	21	14	9	539
Mayo	26	21	18	27	22	36	38	21	31	40	45	55	29	17	17	14	17	474
Old Crow	16	11	12	22	21	16	20	17	12	18	22	17	20	8	7	2	7	247
Pelly Crossing	35	13	15	14	31	32	25	23	24	28	30	25	15	16	6	8	7	347
Ross River	24	15	21	25	23	23	31	18	32	29	33	25	20	12	10	4	7	351
Tagish	3	7	6	17	5	13	9	11	6	18	32	27	26	28	17	8	10	243
Teslin	23	23	14	24	22	22	26	34	33	37	34	43	41	27	13	8	15	439
Watson Lake	78	73	62	87	100	97	82	77	92	127	137	131	99	109	45	23	34	1,453
Whitehorse	1,583	1,489	1,435	1,563	1,926	2,282	2,222	2,052	2,095	2,056	2,457	2,231	1,716	1,208	638	407	412	27,773
Other <sup>2</sup>	2	0	0	2	5	4	0	2	1	4	11	14	7	6	1	2	0	62
Yukon <sup>1</sup>	2,041	1,889	1,793	1,970	2,461	2,851	2,844	2,599	2,644	2,717	3,283	3,074	2,344	1,706	911	573	589	36,289

<sup>1</sup> Due to the use of regression modelling, the sums of rows and/or columns may not equal totals given.

<sup>2</sup> Other includes communities such as Champagne, Elsa, Johnson's Crossing, Keno City, Stewart Crossing & Swift River.

# Population by Whitehorse Area Subdivisions



**Note:** Assignments of numbers of residents to Whitehorse subdivisions are based on mailing addresses recorded on health care administrative files, as well as addresses on motor vehicles records that were matched with health care files. Some of these records are inconsistent or incomplete. Changes in subdivision populations from one time period to another are not only due to natural population change and migrations, but may also be due to reassignments of previously inaccurate addresses on file.

Subdivision	Sep '12 <sup>r</sup>	Jun '13	Sep '13	Subdivision	Sep '12 <sup>r</sup>	Jun '13	Sep '13
Copper Ridge	3,518	3,521	3,514	Takhini North	1,152	1,126	1,137
Cowley Creek	249	238	229	Takhini South/College	1,281	1,358	1,378
Crestview	765	761	759	Valleyview	173	179	178
Downtown (including Marwell)	3,320	3,364	3,335	Whse Copper/McCrae/ Mt. Sima/Canyon Cresc.	393	423	428
Granger	1,070	1,051	1,025	Whistle Bend	4	8	9
Hidden Valley/MacPherson	411	417	424	Wolf Creek	360	367	370
Hillcrest/Airport	631	614	628	<i>Within Whitehorse City Limits, Not in Defined Neighbourhood</i>	554	547	561
Ingram/Arkell	585	699	740	<i>Post Office Box</i> <sup>1</sup>	329	348	407
Kopper King/Raven's Ridge	249	265	261	<i>Inconsistent Information</i> <sup>2</sup>	422	418	403
Lobird/Hamilton Blvd South	192	195	196	<b>Whitehorse-Municipal Boundaries</b> <sup>3</sup>	<b>26,008</b>	<b>26,210</b>	<b>26,151</b>
Logan	361	362	363	Outside City Limits-North <sup>4</sup>	950	982	956
McIntyre	529	539	526	Outside City Limits-South <sup>5</sup>	476	469	450
Mary Lake/Spruce Hill	407	419	417	Outside City Limits-West <sup>6</sup>	245	228	216
Pine Ridge/Fox Haven	298	297	312	<b>Whitehorse Area Total</b> <sup>3</sup>	<b>27,678</b>	<b>27,889</b>	<b>27,773</b>
Porter Creek/Kulan	3,751	3,816	3,752				
Riverdale	5,003	4,877	4,801				

<sup>r</sup> revised

<sup>1</sup> *Post Office Box* indicates cases where the mailing address is only identified as a post office box located in a Whitehorse postal outlet; therefore the precise physical address remains unknown.

<sup>2</sup> *Inconsistent Information* includes residents whose self-identified city of residence is Whitehorse but whose addresses recorded in the administrative files show inconsistencies; therefore there is a possibility that some of these residents may in fact reside outside the Whitehorse area.

<sup>3</sup> Due to rounding, columns may not equal totals given.

<sup>4</sup> *Outside City Limits-North* includes those residents living from Takhini River Bridge up to and including Fox Lake.

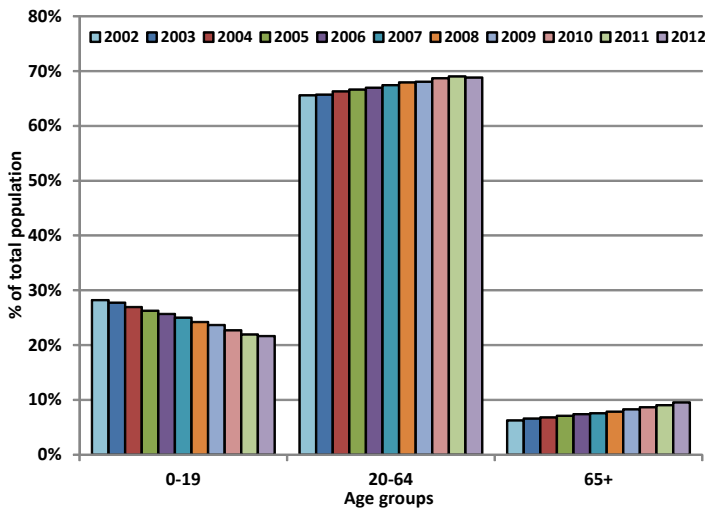
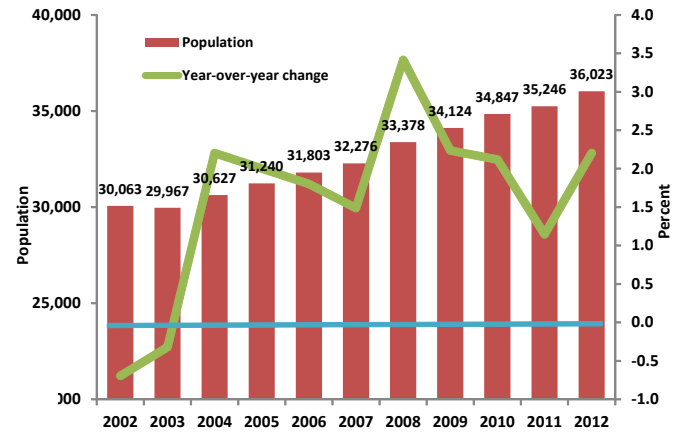
<sup>5</sup> *Outside City Limits-South* includes those residents living from Carcross Cut-off up to and including Annie Lake Road.

<sup>6</sup> *Outside City Limits-West* includes those residents living from the Mayo Road Cut-off up to and including Mendenhall.

# Annual Population Estimates

## Annual Population Growth, Yukon, 2002 to 2012

Yukon's population has increased by 5,960, from 30,063 in 2002 to 36,023 in 2012. This represents a compound annual growth rate of 2.0%. However, this growth has not occurred evenly from year to year. It has ranged from a growth of 3.4% between 2007 and 2008 to a decline of 0.7% between 2001 and 2002.



Broad age groups (as a percentage of Yukon's total population), have shown that:

- the 0-19 age group has decreased from a 28.2% share of the total population in 2002 to 21.6% in 2012: a decrease of 6.6 percentage points.
- the 65+ age group has increased from 6.2% of the total population in 2002 to 9.5% in 2012: an increase of 3.3 percentage points.

## Notes

Prior to 2012, the Yukon Bureau of Statistics produced population estimates twice a year. Effective 2012, estimates are produced quarterly.

Official population estimates for months and years prior to June 2010 were based on raw counts of Yukon Health Care Insurance Plan recipients, adjusted using the results of a semi-annual health care update survey that estimated the number of recipients who were no longer Yukon residents. Population estimates are now based on a model that combines raw counts of Yukon Health Care Insurance Plan recipients, health insurance claims, and motor vehicle registrations. The model is calibrated through a regression procedure that was conducted on official Yukon population estimates between January 2007 and June 2010.

Figures are sorted by postal codes and community codes. Users of this information should be aware that community population estimates include not only the legally defined municipal limits, but also the population that lives in the immediately surrounding area.

Information sheet no. 58.46 - February 2014  
Next Release: May 2014